



VERMILION TECHNICAL RESEARCH

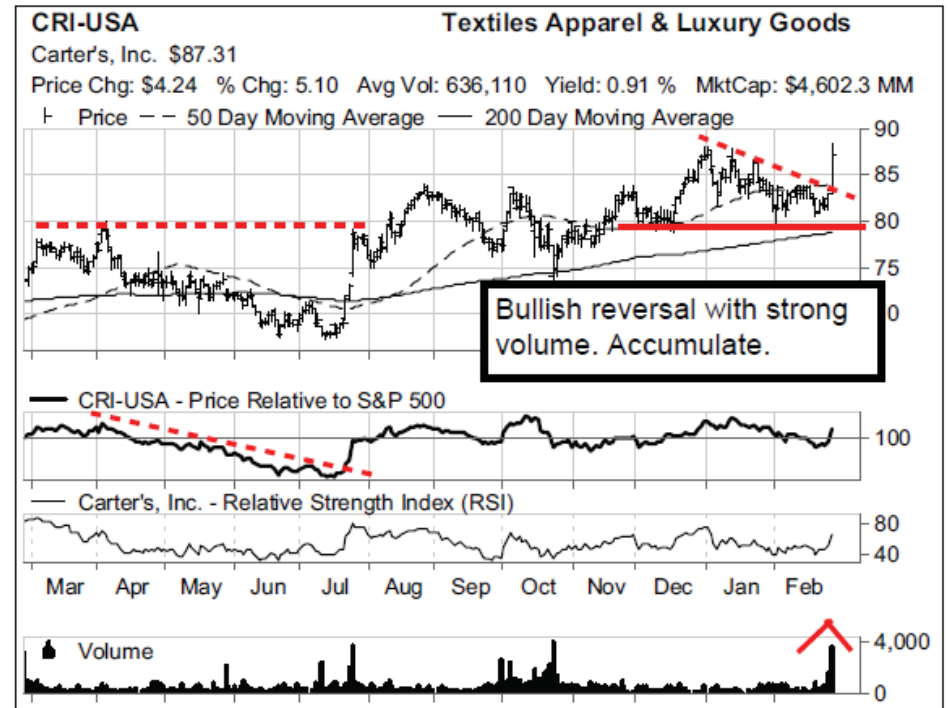
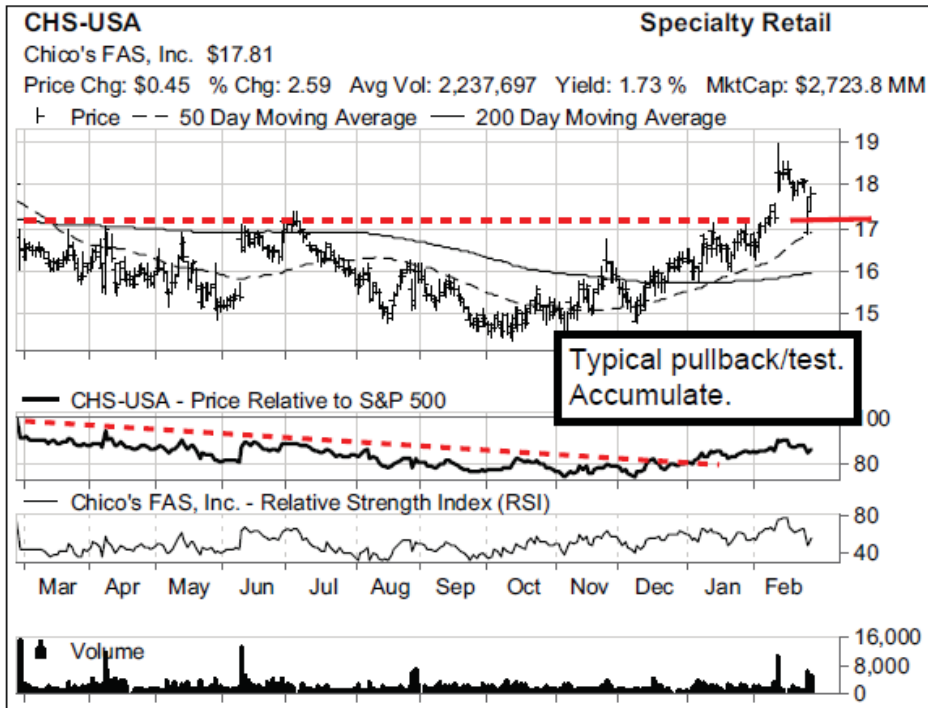
Charts of the Day: AMCX, CENX, CHS, CRI, EXLS, EXPD, FNFG, FSS, GCI, HWAY, IGTE, ITG, KS, MCD, MPC, MYL, PNFP, QNST, SHOO, SMG, UBSI, WAB, and ZTS.

# Vermilion Vital Signs

February 27, 2015

## Market Rankings for the most Positive and Negative Domestic Stocks

In this product we rank the most positive and negative domestic stocks, filter the symbols by market-cap and trading volume, and then divide the companies into Sectors and Groups. We then manually analyze the charts of the filtered names for technical significance: breakouts/breakdowns, Sector/Group themes, relative strength leadership changes, bottoms-up/top-down ideas, short-term patterns that may have long-term significance, etc. We believe you will find this product valuable as significant price and relative moves begin in the daily charts.

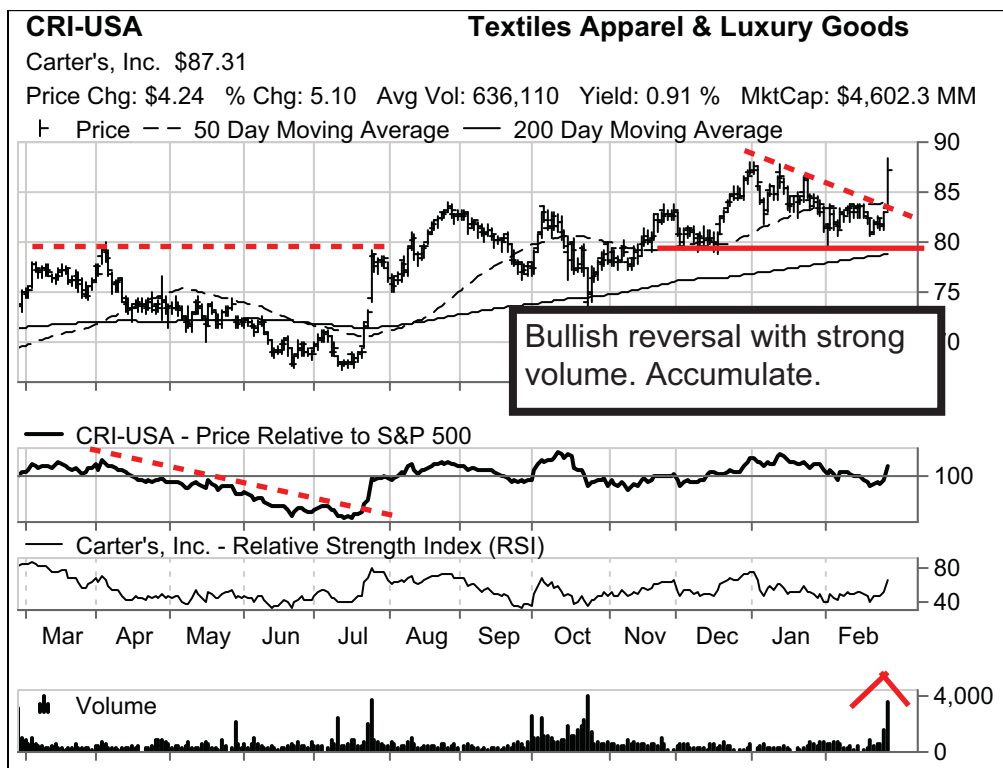
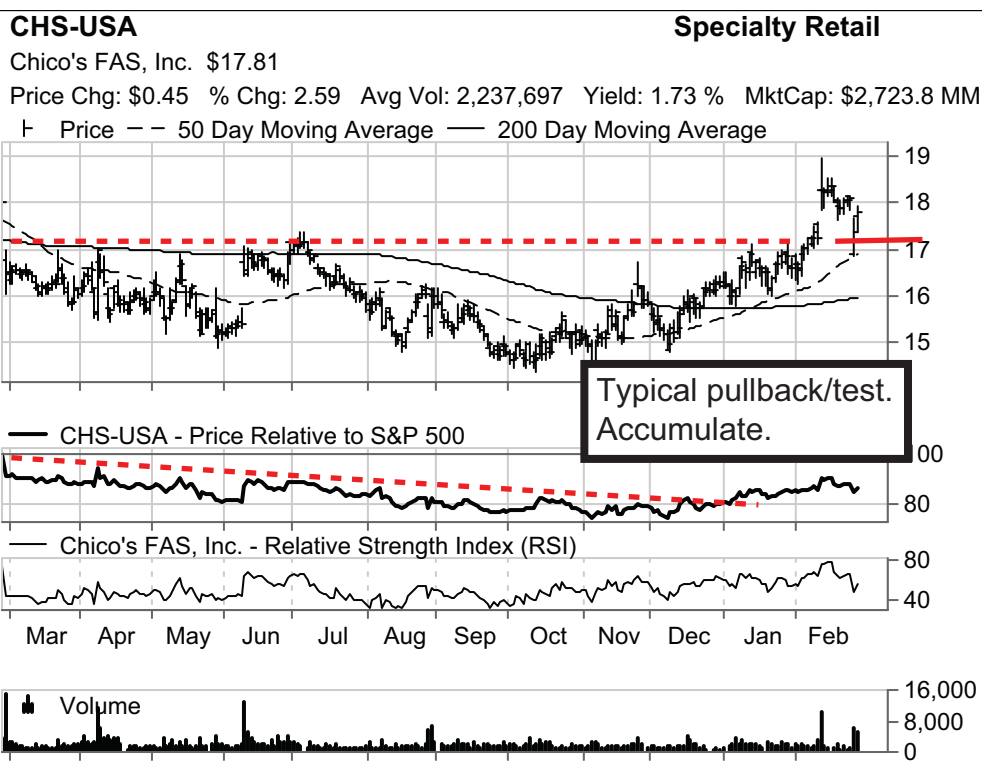
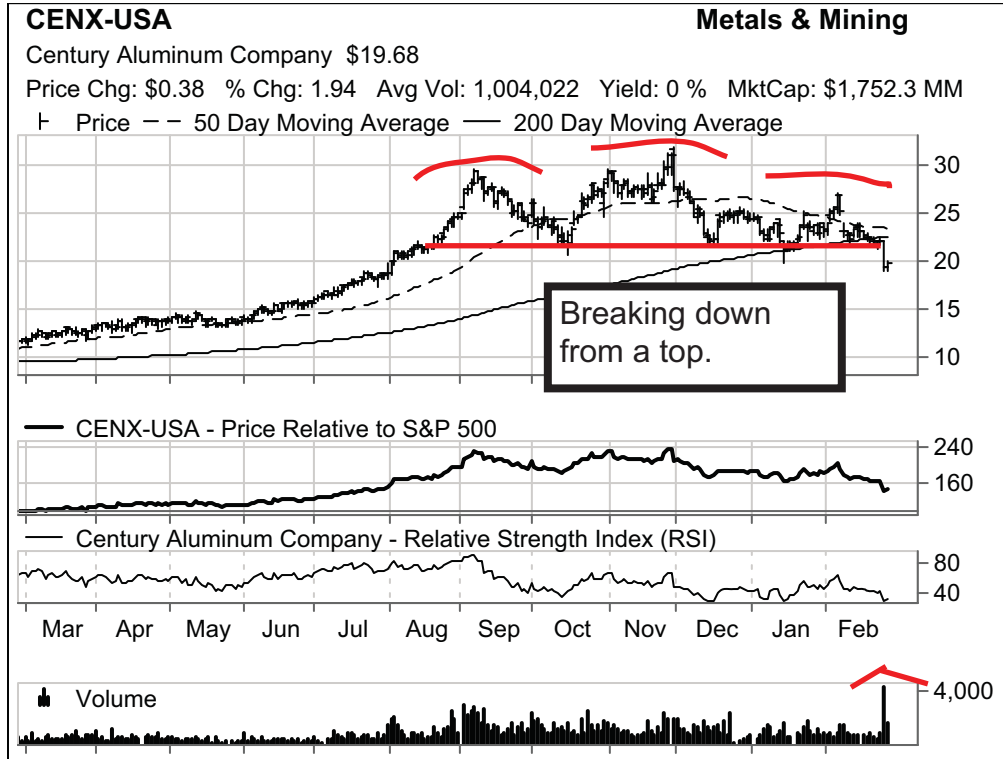
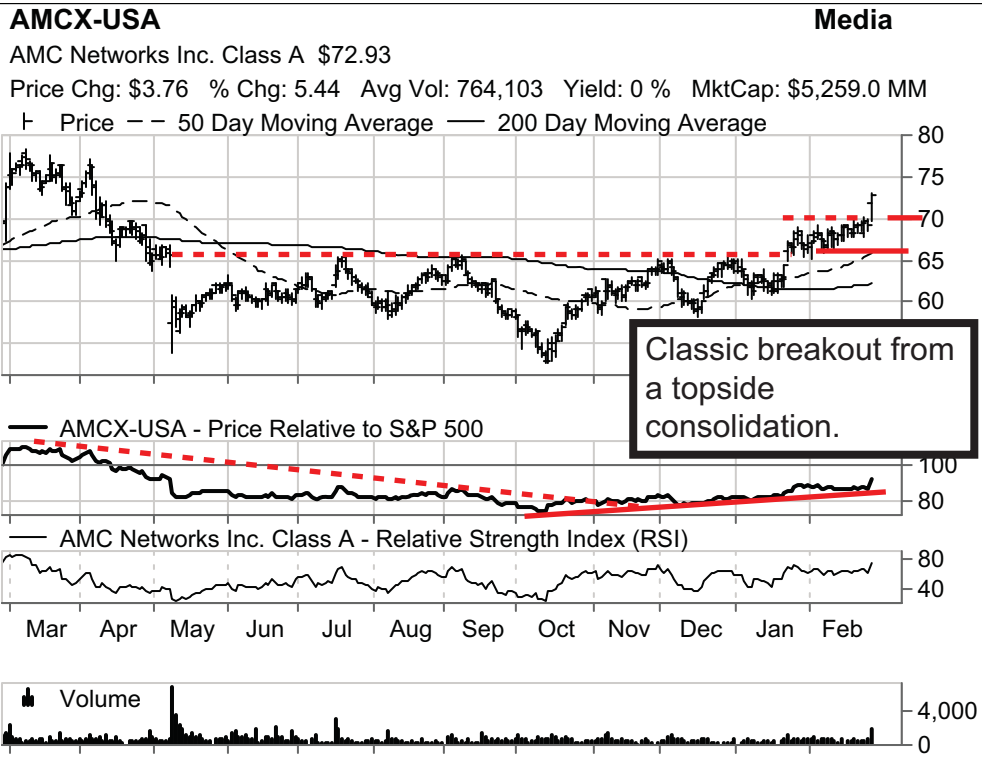


David P. Nicoski, CMT  
952-922-7502  
[dave@vermilioncap.com](mailto:dave@vermilioncap.com)

Shelley D. Moen, CMT  
952-922-7504  
[shelley@vermilioncap.com](mailto:shelley@vermilioncap.com)

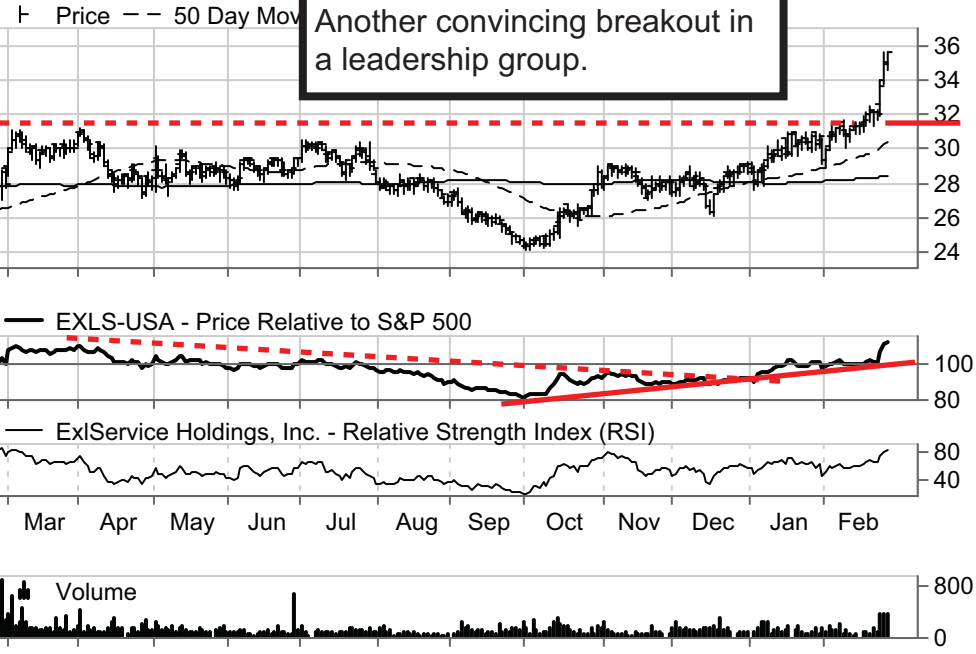
Joe W. Jasper, CFA  
952-922-7501  
[joe@vermilioncap.com](mailto:joe@vermilioncap.com)

John M. Betz, CMT  
952-922-7506  
[john@vermilioncap.com](mailto:john@vermilioncap.com)



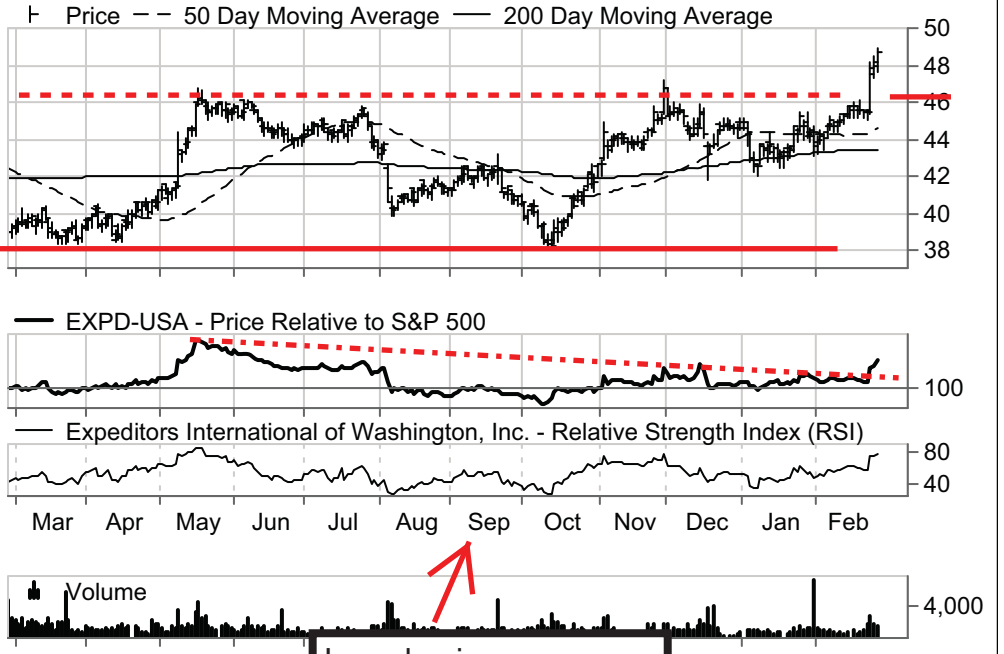
**EXLS-USA IT Services**

ExlService Holdings, Inc. \$35.60  
 Price Chg: \$0.60 % Chg: 1.71 Avg Vol: 143,538 Yield: 0 % MktCap: \$1,171.4 MM



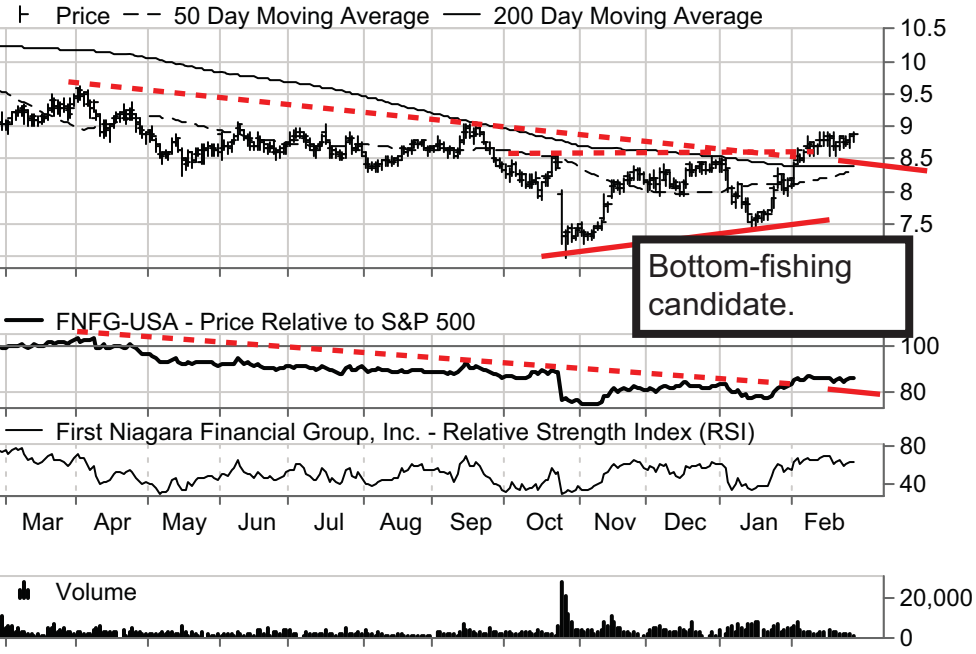
**EXPD-USA Air Freight & Logistics**

Expeditors International of Washington, Inc. \$48.79  
 Price Chg: \$0.63 % Chg: 1.31 Avg Vol: 1,387,494 Yield: 1.33 % MktCap: \$9,350.9 MM



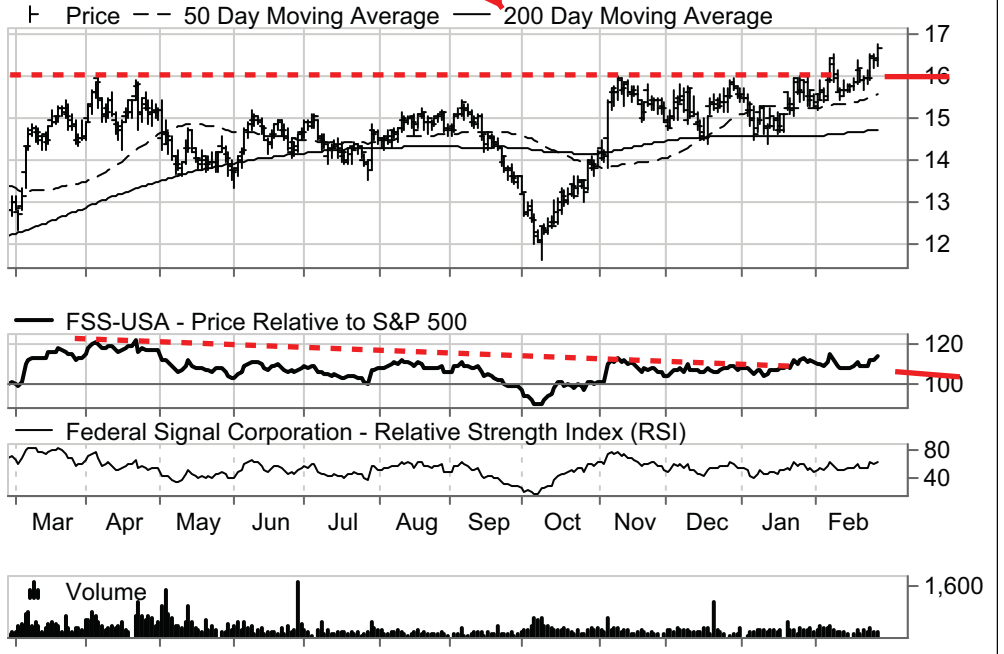
**FNFG-USA Banks**

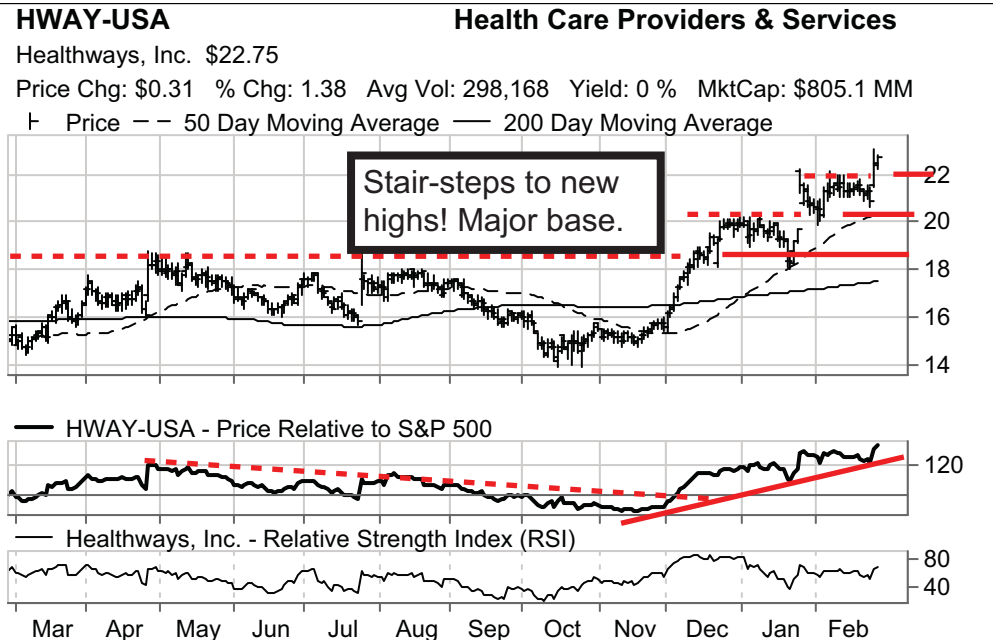
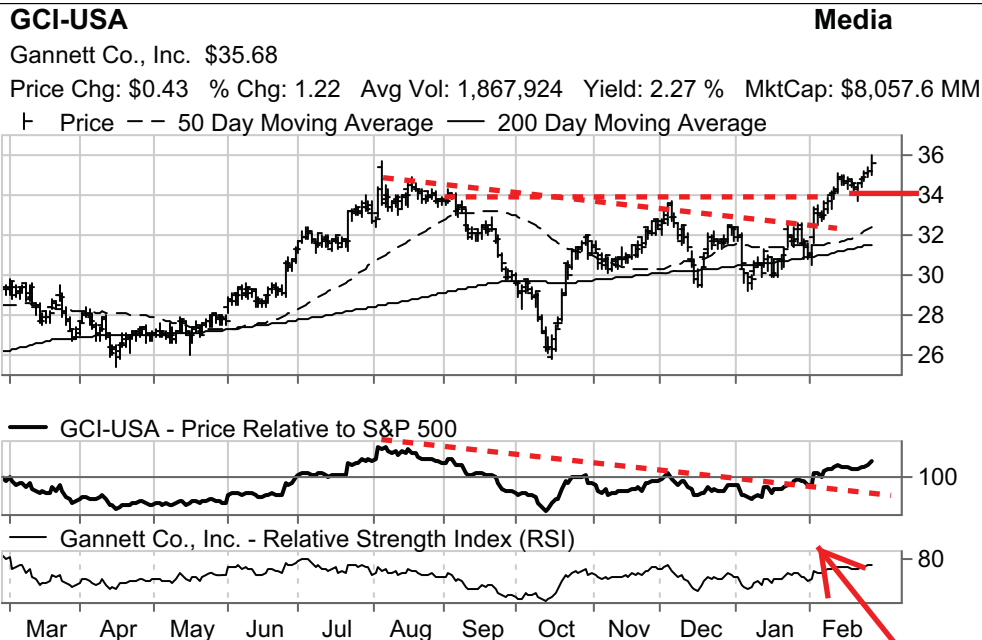
First Niagara Financial Group, Inc. \$8.88  
 Price Chg: \$0.02 % Chg: 0.17 Avg Vol: 3,683,382 Yield: 3.61 % MktCap: \$3,138.1 MM



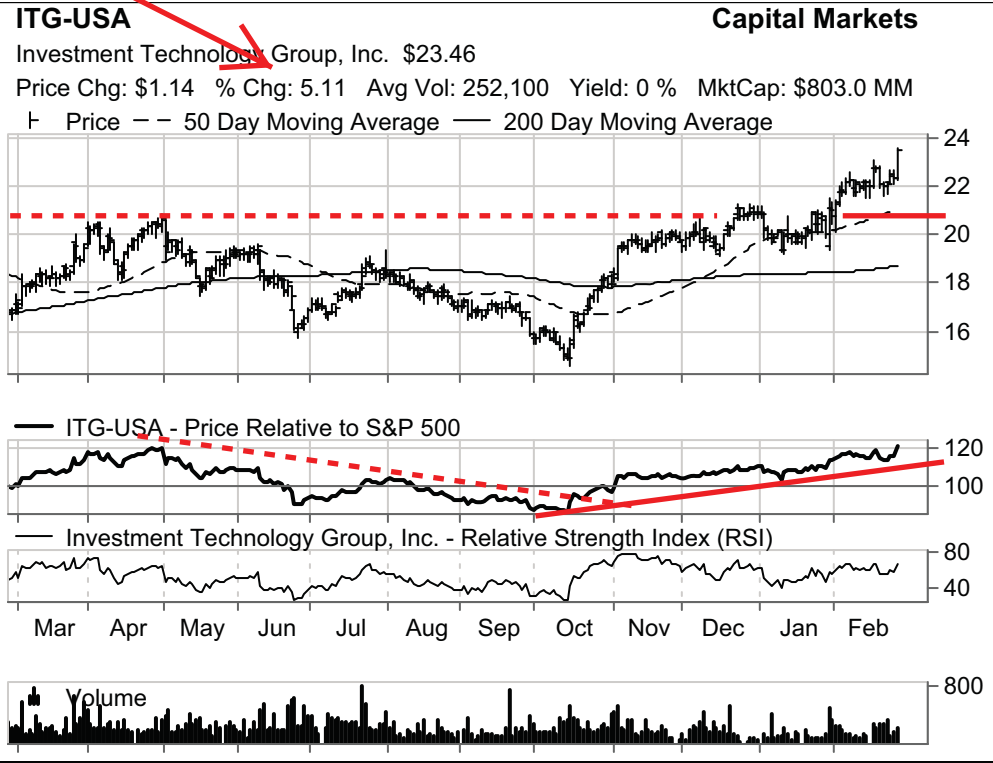
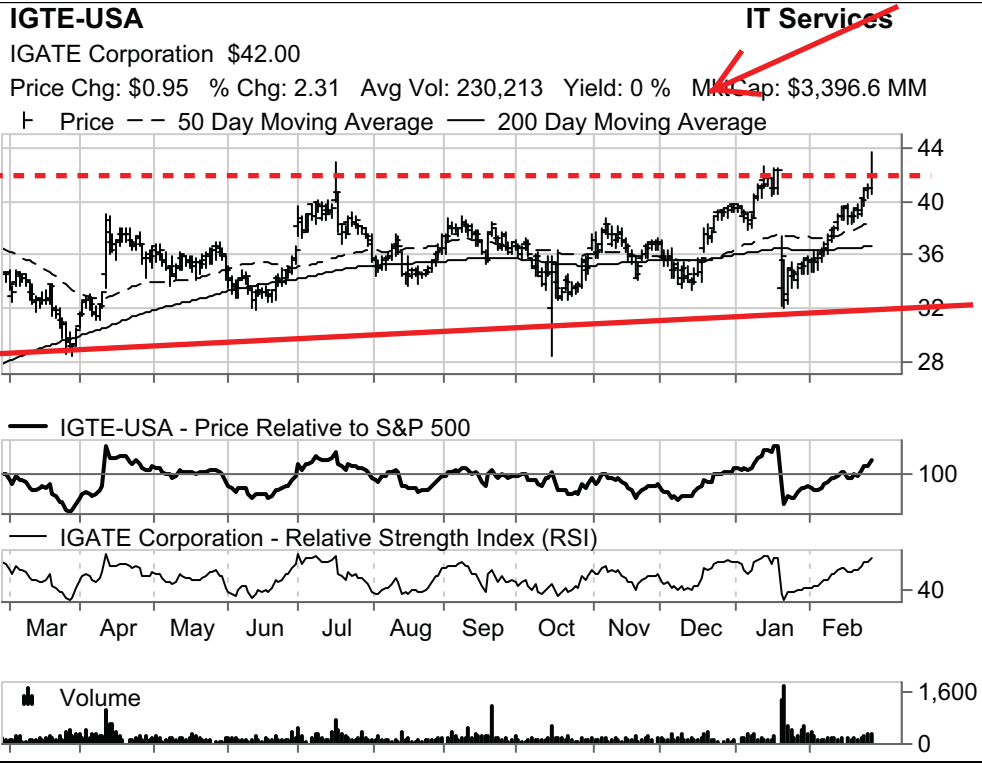
**FSS-USA Machinery**

Federal Signal Corporation \$16.63  
 Price Chg: \$0.25 % Chg: 1.53 Avg Vol: 328,199 Yield: 1.47 % MktCap: \$1,040.9 MM



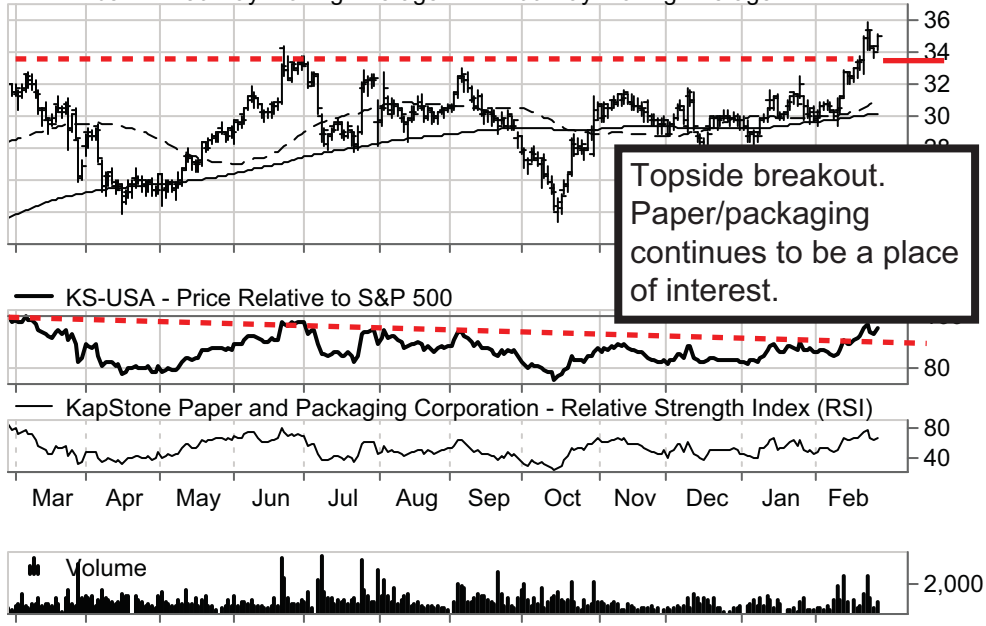


Breakouts from major bases. Accumulate. Major move potential.



### KS-USA Paper & Forest Products

KapStone Paper and Packaging Corporation \$35.00  
 Price Chg: \$0.88 % Chg: 2.58 Avg Vol: 936,880 Yield: 0.29 % MktCap: \$3,360.0 MM  
 Price --- 50 Day Moving Average — 200 Day Moving Average



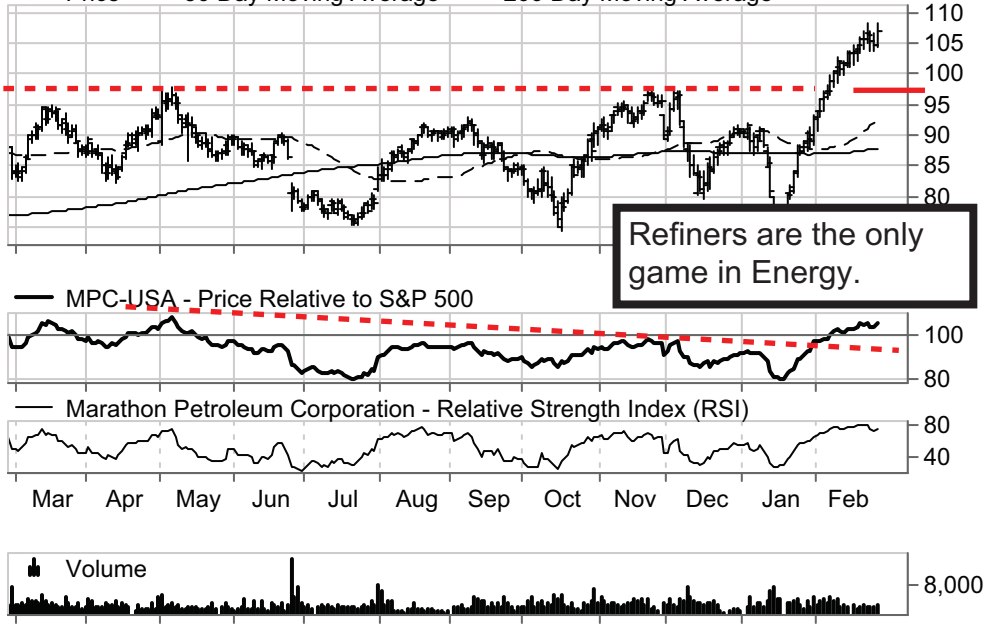
### MCD-USA Hotels Restaurants & Leisure

McDonald's Corporation \$99.51  
 Price Chg: \$0.85 % Chg: 0.86 Avg Vol: 5,623,388 Yield: 3.45 % MktCap: \$96,843.5 MM  
 Price --- 50 Day Moving Average — 200 Day Moving Average



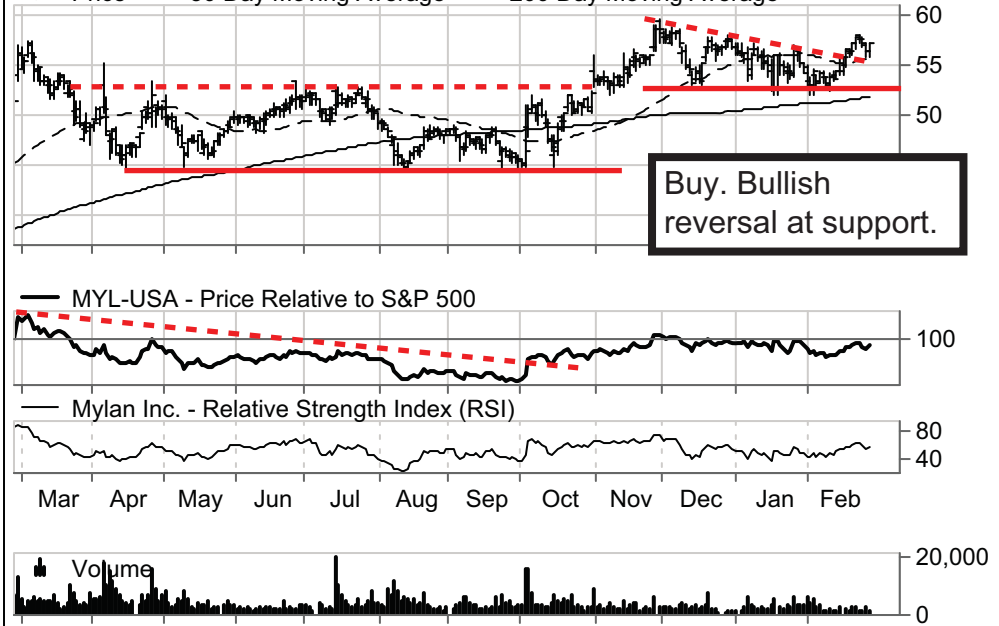
### MPC-USA Oil Gas & Consumable Fuels

Marathon Petroleum Corporation \$107.04  
 Price Chg: \$2.38 % Chg: 2.27 Avg Vol: 3,241,032 Yield: 1.91 % MktCap: \$29,329.0 MM  
 Price --- 50 Day Moving Average — 200 Day Moving Average



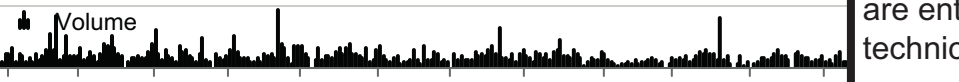
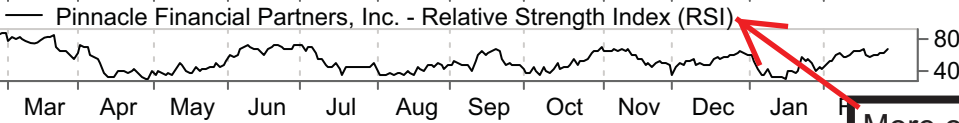
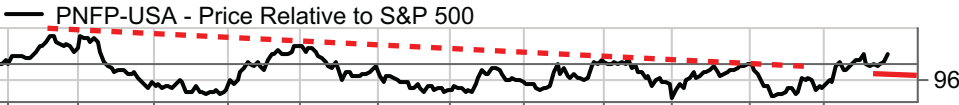
### MYL-USA Pharmaceuticals

Mylan Inc. \$57.24  
 Price Chg: \$0.74 % Chg: 1.32 Avg Vol: 4,327,938 Yield: 0 % MktCap: \$21,425.3 MM  
 Price --- 50 Day Moving Average — 200 Day Moving Average



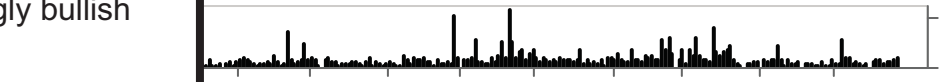
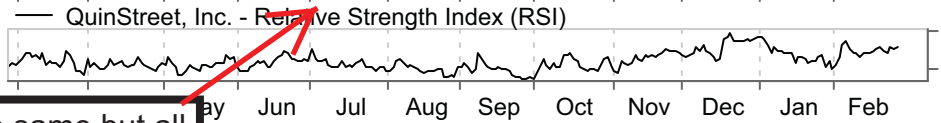
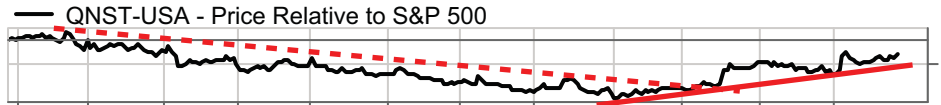
**PNFP-USA** **Banks**

Pinnacle Financial Partners, Inc. \$41.69  
 Price Chg: \$0.81 % Chg: 1.98 Avg Vol: 146,827 Yield: 1.17 % MktCap: \$1,489.7 MM  
 Price 50 Day Moving Average 200 Day Moving Average



**QNST-USA** **Internet Software & Services**

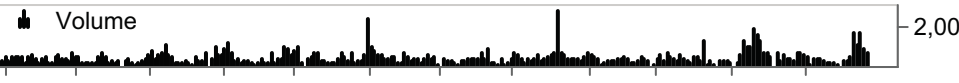
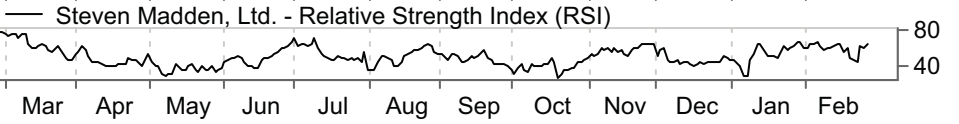
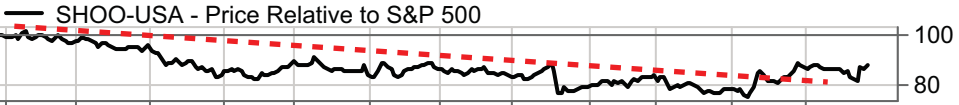
QuinStreet, Inc. \$6.65  
 Price Chg: \$0.21 % Chg: 3.26 Avg Vol: 144,196 Yield: 0 % MktCap: \$295.9 MM  
 Price 50 Day Moving Average 200 Day Moving Average



More of the same but all are enticingly bullish technically.

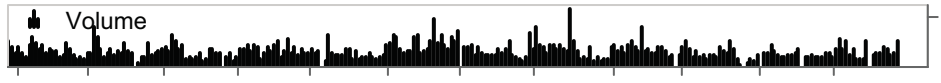
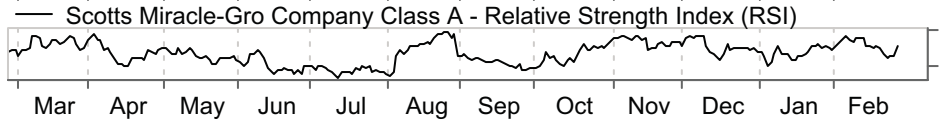
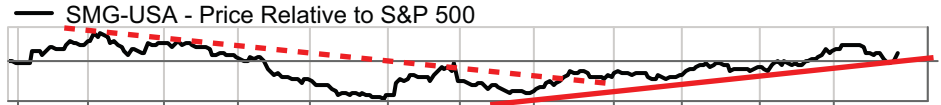
**SHOO-USA** **Textiles Apparel & Luxury Goods**

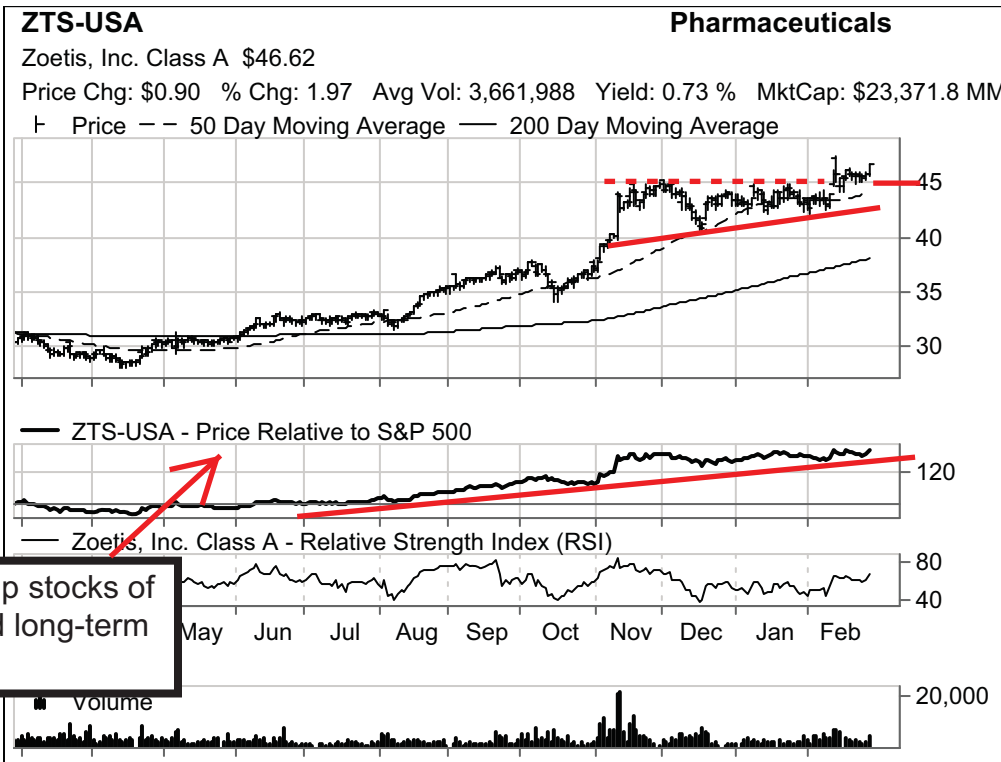
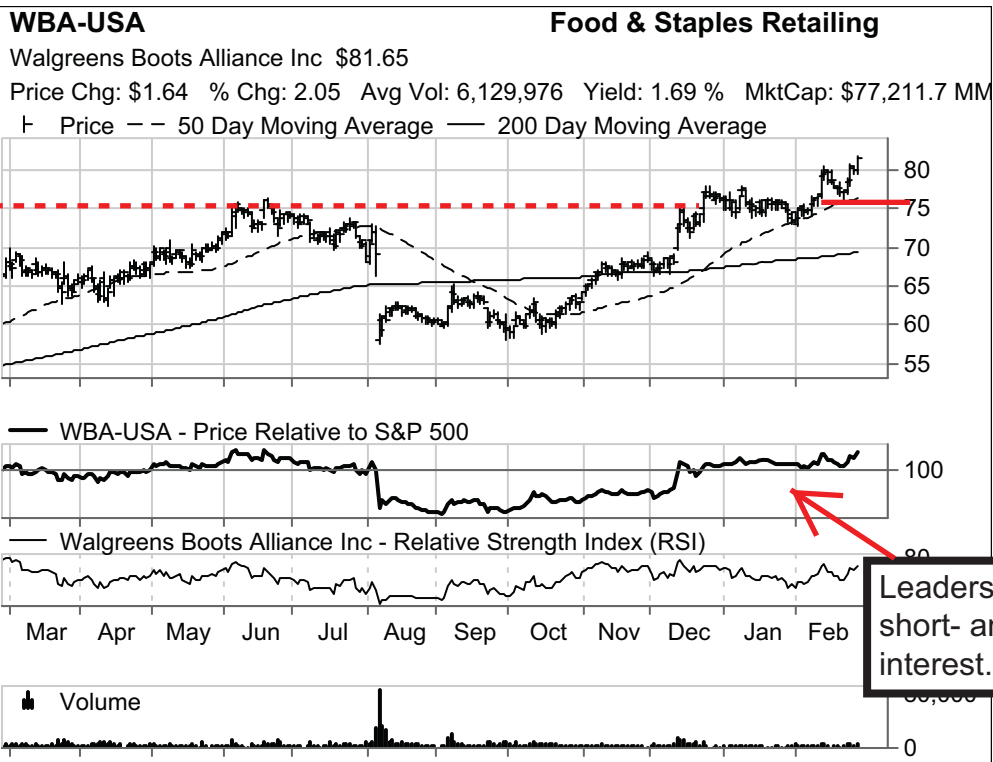
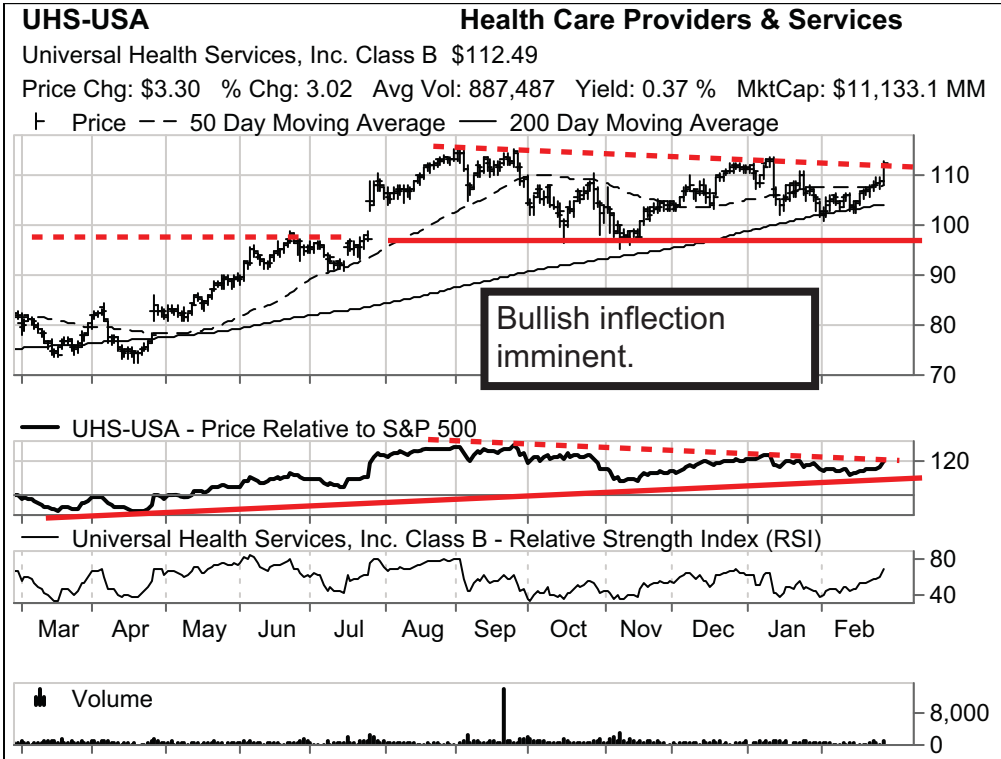
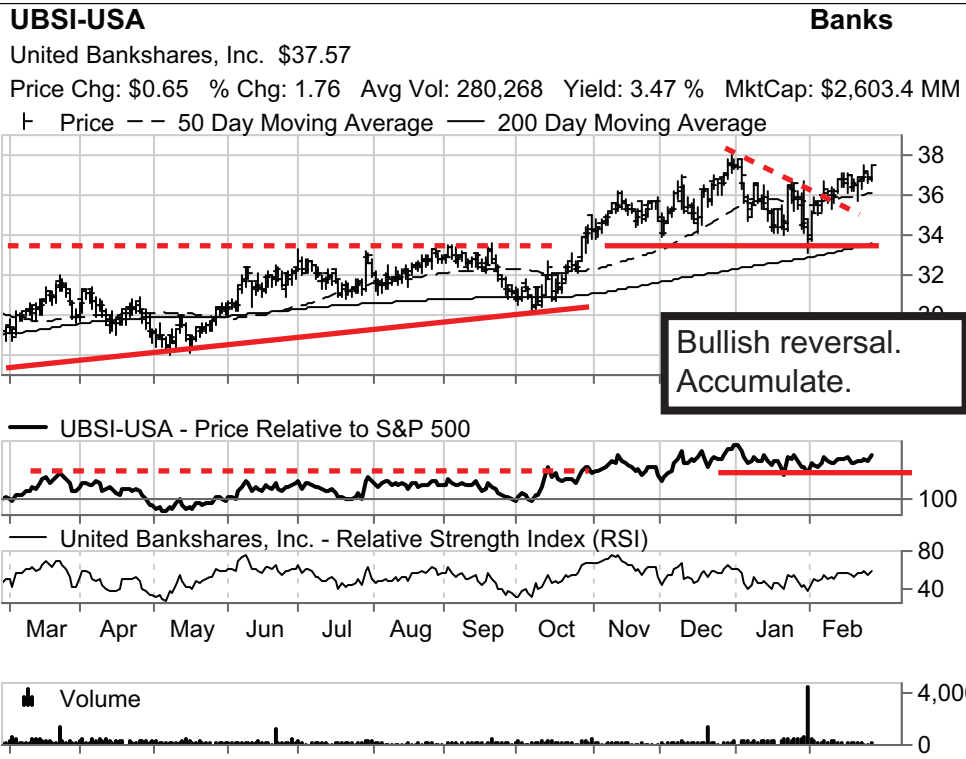
Steven Madden, Ltd. \$36.77  
 Price Chg: \$0.79 % Chg: 2.20 Avg Vol: 547,878 Yield: 0 % MktCap: \$2,361.6 MM  
 Price 50 Day Moving Average 200 Day Moving Average



**SMG-USA** **Chemicals**

Scotts Miracle-Gro Company Class A \$66.60  
 Price Chg: \$1.53 % Chg: 2.35 Avg Vol: 275,441 Yield: 2.77 % MktCap: \$4,052.5 MM  
 Price 50 Day Moving Average 200 Day Moving Average







VERMILION TECHNICAL RESEARCH

### Leaders. Highlighting inflections and themes. Sorted by Sector/Group.

Company Symbol	Company Name	Current Price 2/26/15	Net Chg	% Chg	Total Volume >50M	Average Daily Volume	Sec Market Value >100 MM	GICS Sector Name	GICS Ind Group Name	GICS Sub Ind Name
<b>LEADERS</b>										
WGO	Winnebago Industries, Inc.	23.5	0.61	2.66	872.7	424.5	633.7	Consumer Discretionary	Automobiles & Componer	Automobile Manufacturers
CRI	Carter's, Inc.	87.3	4.24	5.10	5,161.7	616.7	4,619.2	Consumer Discretionary	Consumer Durables & Ap	Apparel Accessories & Lu
HBI	Hanesbrands Inc.	128.9	3.83	3.06	1,801.9	771.2	12,916.8	Consumer Discretionary	Consumer Durables & Ap	Apparel Accessories & Lu
UEIC	Universal Electronics Inc.	55.6	1.06	1.94	261.8	118.0	878.6	Consumer Discretionary	Consumer Durables & Ap	Consumer Electronics
SHOO	Steven Madden, Ltd.	36.8	0.79	2.20	1,771.3	623.8	2,361.6	Consumer Discretionary	Consumer Durables & Ap	Footwear
IRBT	iRobot Corporation	33.1	0.66	2.04	778.7	612.0	980.7	Consumer Discretionary	Consumer Durables & Ap	Household Appliances
RGR	Sturm, Ruger & Company, Inc.	52.7	6.68	14.52	3,202.1	269.1	1,023.1	Consumer Discretionary	Consumer Durables & Ap	Leisure Products
ELY	Callaway Golf Company	9.0	0.13	1.47	912.8	834.3	694.3	Consumer Discretionary	Consumer Durables & Ap	Leisure Products
UFI	Unifi, Inc.	32.4	0.43	1.34	81.4	77.2	589.6	Consumer Discretionary	Consumer Durables & Ap	Textiles
BYD	Boyd Gaming Corporation	14.2	0.18	1.28	1,747.0	1,464.6	1,544.0	Consumer Discretionary	Consumer Services	Casinos & Gaming
MCD	McDonald's Corporation	99.5	0.85	1.72	32,840.1	7,913.9	95,641.0	Consumer Discretionary	Consumer Services	Restaurants
PNRA	Panera Bread Company Class A	161.5	2.56	1.61	811.1	685.5	4,108.6	Consumer Discretionary	Consumer Services	Restaurants
OMC	Omnicom Group Inc	80.2	1.05	1.33	4,175.4	1,510.8	19,787.0	Consumer Discretionary	Media	Advertising
AMCX	AMC Networks Inc. Class A	72.9	3.76	5.44	2,818.8	686.4	4,421.4	Consumer Discretionary	Media	Cable & Satellite
CVC	Cablevision Systems Corporation Class A	18.9	0.32	1.72	13,417.2	2,881.0	4,144.0	Consumer Discretionary	Media	Cable & Satellite
GCI	Gannett Co., Inc.	35.7	0.43	1.22	4,249.5	1,553.4	8,057.7	Consumer Discretionary	Media	Publishing
CHS	Chico's FAS, Inc.	17.8	0.45	2.59	12,015.7	2,344.5	2,723.8	Consumer Discretionary	Retailing	Apparel Retail
ZUMZ	Zumiez Inc.	38.8	0.64	1.68	319.6	195.3	1,135.1	Consumer Discretionary	Retailing	Apparel Retail
PLCE	Children's Place, Inc.	56.8	0.77	1.37	557.9	414.9	1,204.8	Consumer Discretionary	Retailing	Apparel Retail
AZO	AutoZone, Inc.	645.0	7.85	1.23	420.1	238.8	20,573.3	Consumer Discretionary	Retailing	Automotive Retail
JCP	J. C. Penney Company, Inc.	9.1	0.13	1.45	44,501.3	10,177.7	2,780.3	Consumer Discretionary	Retailing	Department Stores
SCSS	Select Comfort Corporation	31.5	0.64	2.08	1,161.5	1,099.3	1,661.6	Consumer Discretionary	Retailing	Homefurnishing Retail
BKS	Barnes & Noble, Inc.	25.9	1.67	6.89	3,379.4	426.0	1,561.5	Consumer Discretionary	Retailing	Specialty Stores
CAB	Cabela's Incorporated	54.3	0.78	1.46	1,548.1	1,458.5	3,863.1	Consumer Discretionary	Retailing	Specialty Stores
WBA	Walgreens Boots Alliance Inc	81.7	1.64	2.05	9,708.6	4,101.3	88,996.5	Consumer Staples	Food & Staples Retailing	Drug Retail
TAP	Molson Coors Brewing Company Class B	77.2	1.56	2.06	2,115.4	1,611.6	12,579.4	Consumer Staples	Food Beverage & Tobacc	Brewers
STZ	Constellation Brands, Inc. Class A	115.8	1.64	1.44	1,769.4	917.1	19,692.9	Consumer Staples	Food Beverage & Tobacc	Distillers & Vintners
SJM	J. M. Smucker Company	115.2	2.10	1.86	1,607.0	996.9	11,724.1	Consumer Staples	Food Beverage & Tobacc	Packaged Foods & Meats
SAFM	Sanderson Farms, Inc.	85.7	1.24	1.47	793.9	498.5	1,985.3	Consumer Staples	Food Beverage & Tobacc	Packaged Foods & Meats
UVV	Universal Corporation	48.0	0.83	1.76	422.5	286.7	1,084.6	Consumer Staples	Food Beverage & Tobacc	Tobacco
EXH	Exterran Holdings, Inc.	33.7	1.51	4.69	3,344.1	965.8	2,301.7	Energy	Energy	Oil & Gas Equipment & Se
HOS	Hornbeck Offshore Services, Inc.	20.1	0.49	2.50	1,897.7	946.0	713.6	Energy	Energy	Oil & Gas Equipment & Se
SLCA	U.S. Silica Holdings, Inc.	30.7	0.56	1.86	7,440.6	3,071.5	1,656.3	Energy	Energy	Oil & Gas Equipment & Se
PVA	Penn Virginia Corporation	6.9	0.67	10.81	20,240.5	4,963.7	491.6	Energy	Energy	Oil & Gas Exploration & P
GPOR	Gulfport Energy Corporation	45.7	1.56	3.55	6,037.3	1,539.9	3,905.0	Energy	Energy	Oil & Gas Exploration & P
AREX	Approach Resources Inc.	7.6	0.20	2.69	3,442.8	1,562.3	302.2	Energy	Energy	Oil & Gas Exploration & P
WNR	Western Refining, Inc.	47.1	3.42	7.84	4,214.6	1,397.9	4,640.8	Energy	Energy	Oil & Gas Refining & Mark



Company Symbol	Company Name	Current Price 2/26/15	Net Chg	% Chg	Total Volume >50M	Average Daily Volume	Sec Market Value >100 MM	GICS Sector Name	GICS Ind Group Name	GICS Sub Ind Name
HFC	HollyFrontier Corporation	44.4	2.16	5.11	10,919.8	3,196.5	8,689.2	Energy	Energy	Oil & Gas Refining & Mark
TSO	Tesoro Corporation	93.5	2.63	2.89	4,907.6	4,002.5	11,753.7	Energy	Energy	Oil & Gas Refining & Mark
MPC	Marathon Petroleum Corporation	107.0	2.38	2.27	6,024.8	3,433.3	29,991.9	Energy	Energy	Oil & Gas Refining & Mark
PSX	Phillips 66	80.1	0.97	1.23	7,108.9	4,293.3	43,512.5	Energy	Energy	Oil & Gas Refining & Mark
PACW	PacWest Bancorp	46.8	1.17	2.55	1,000.7	477.6	4,771.5	Financials	Banks	Regional Banks
PNFP	Pinnacle Financial Partners, Inc.	41.7	0.81	1.98	253.3	109.5	1,486.5	Financials	Banks	Regional Banks
UCBI	United Community Banks, Inc.	19.2	0.37	1.96	279.2	228.1	965.3	Financials	Banks	Regional Banks
UBSI	United Bankshares, Inc.	37.6	0.65	1.76	376.2	500.6	2,600.0	Financials	Banks	Regional Banks
BXS	BancorpSouth, Inc.	22.6	0.37	1.67	801.4	497.4	2,175.0	Financials	Banks	Regional Banks
CATY	Cathay General Bancorp	25.8	0.25	1.37	743.0	335.7	2,062.4	Financials	Banks	Regional Banks
SFNC	Simmons First National Corporation Class	41.0	0.47	1.16	131.8	49.2	738.7	Financials	Banks	Regional Banks
BKMU	Bank Mutual Corporation	7.2	0.12	1.69	164.6	119.2	336.2	Financials	Banks	Thriffs & Mortgage Financ
FNGN	Financial Engines, Inc.	41.5	0.50	1.22	551.9	531.3	2,154.1	Financials	Diversified Financials	Asset Management & Cus
WRDL	World Acceptance Corporation	83.2	1.85	2.27	239.0	139.5	793.0	Financials	Diversified Financials	Consumer Finance
AXP	American Express Company	83.3	1.08	1.31	16,862.0	10,353.7	84,846.3	Financials	Diversified Financials	Consumer Finance
ITG	Investment Technology Group, Inc.	23.5	1.14	5.11	433.4	216.0	816.1	Financials	Diversified Financials	Investment Banking & Bro
PJC	Piper Jaffray Companies	55.2	0.78	1.43	168.1	102.6	898.3	Financials	Diversified Financials	Investment Banking & Bro
GHL	Greenhill & Co., Inc.	39.7	0.49	1.25	441.0	463.6	1,116.6	Financials	Diversified Financials	Investment Banking & Bro
MKTX	MarketAxess Holdings Inc.	80.9	1.10	1.38	194.7	172.4	3,025.0	Financials	Diversified Financials	Specialized Finance
UVE	Universal Insurance Holdings, Inc.	25.3	2.79	12.41	1,548.8	304.3	866.1	Financials	Insurance	Property & Casualty Insur.
HCI	HCI Group, Inc.	47.5	1.28	2.77	247.9	78.0	522.4	Financials	Insurance	Property & Casualty Insur.
UIHC	United Insurance Holdings Corp.	24.7	0.66	2.75	460.6	495.1	516.3	Financials	Insurance	Property & Casualty Insur.
IPCC	Infinity Property and Casualty Corporator	75.8	1.40	1.88	85.8	24.8	871.1	Financials	Insurance	Property & Casualty Insur.
NAVG	Navigators Group, Inc.	74.8	1.20	1.63	58.9	44.9	1,068.9	Financials	Insurance	Property & Casualty Insur.
MIG	Meadowbrook Insurance Group, Inc.	8.5	0.12	1.44	884.5	380.1	423.8	Financials	Insurance	Property & Casualty Insur.
LAMR	Lamar Advertising Company Class A	59.0	1.13	1.95	3,313.0	911.6	4,770.8	Financials	Real Estate	Specialized REITs
CYBX	Cyberonics, Inc.	66.6	6.23	10.32	9,700.5	280.8	1,752.4	Health Care	Health Care Equipment & Health Care Equipment	Health Care Equipment
CMN	Cantel Medical Corp.	46.2	0.77	1.70	163.2	105.3	1,918.1	Health Care	Health Care Equipment & Health Care Equipment	Health Care Equipment
ABMD	ABIOMED, Inc.	61.0	0.83	1.38	996.7	661.0	2,507.5	Health Care	Health Care Equipment & Health Care Equipment	Health Care Equipment
UHS	Universal Health Services, Inc. Class B	112.5	3.30	3.11	1,524.8	668.1	10,313.2	Health Care	Health Care Equipment & Health Care Facilities	Health Care Facilities
SEM	Select Medical Holdings Corporation	13.2	0.33	2.57	3,443.2	1,189.9	1,721.7	Health Care	Health Care Equipment & Health Care Facilities	Health Care Facilities
AMSG	AmSurg Corp.	58.0	1.38	2.44	1,599.8	452.9	2,789.8	Health Care	Health Care Equipment & Health Care Facilities	Health Care Facilities
THC	Tenet Healthcare Corporation	46.7	1.11	2.43	3,817.9	1,715.5	4,603.6	Health Care	Health Care Equipment & Health Care Facilities	Health Care Facilities
CYH	Community Health Systems, Inc.	48.8	1.09	2.29	3,260.8	1,678.9	5,695.1	Health Care	Health Care Equipment & Health Care Facilities	Health Care Facilities
HGR	Hanger, Inc.	25.4	0.54	2.17	630.7	265.8	897.1	Health Care	Health Care Equipment & Health Care Facilities	Health Care Facilities
HCA	HCA Holdings, Inc.	72.3	1.29	1.82	6,299.8	7,722.9	30,387.9	Health Care	Health Care Equipment & Health Care Facilities	Health Care Facilities
ENSG	Ensign Group, Inc.	44.1	0.70	1.61	404.7	169.3	1,106.5	Health Care	Health Care Equipment & Health Care Facilities	Health Care Facilities
LPNT	LifePoint Hospitals, Inc.	72.1	1.14	1.61	391.4	383.3	3,186.5	Health Care	Health Care Equipment & Health Care Facilities	Health Care Facilities
LHCG	LHC Group, Inc.	33.6	4.68	16.18	287.1	46.7	598.2	Health Care	Health Care Equipment & Health Care Services	Health Care Services
AFAM	Almost Family, Inc.	33.2	2.05	6.58	118.2	31.4	314.6	Health Care	Health Care Equipment & Health Care Services	Health Care Services
AMED	Amedisys, Inc.	30.9	1.29	4.36	546.9	162.7	1,031.4	Health Care	Health Care Equipment & Health Care Services	Health Care Services
IPCM	IPC Healthcare, Inc.	43.9	1.50	3.54	293.4	168.9	759.1	Health Care	Health Care Equipment & Health Care Services	Health Care Services
CCRN	Cross Country Healthcare, Inc.	13.0	0.31	2.44	378.3	319.5	460.8	Health Care	Health Care Equipment & Health Care Services	Health Care Services
PRSC	Providence Service Corporation	46.0	1.01	2.24	199.9	100.1	729.5	Health Care	Health Care Equipment & Health Care Services	Health Care Services
AIRM	Air Methods Corporation	45.7	0.97	2.17	726.6	358.9	1,790.5	Health Care	Health Care Equipment & Health Care Services	Health Care Services

Company Symbol	Company Name	Current Price 2/26/15	Net Chg	% Chg	Total Volume >50M	Average Daily Volume	Sec Market Value >100 MM	GICS Sector Name	GICS Ind Group Name	GICS Sub Ind Name
OCR	Omnicare, Inc.	76.8	1.61	2.14	2,301.9	753.5	7,459.4	Health Care	Health Care Equipment & Health Care Services	Health Care Services
LH	Laboratory Corporation of America Holdin	124.5	2.11	1.72	2,867.5	1,480.5	12,426.0	Health Care	Health Care Equipment & Health Care Services	Health Care Services
HWAY	Healthways, Inc.	22.8	0.31	1.38	1,757.8	499.9	807.9	Health Care	Health Care Equipment & Health Care Services	Health Care Services
CHE	Chemed Corporation	116.5	1.27	1.29	260.9	141.2	1,981.5	Health Care	Health Care Equipment & Health Care Services	Health Care Services
HAE	Haemonetics Corporation	45.3	1.11	2.51	457.9	298.7	2,330.0	Health Care	Health Care Equipment & Health Care Supplies	Health Care Supplies
VIVO	Meridian Bioscience, Inc.	19.8	0.32	1.64	543.7	347.3	826.2	Health Care	Health Care Equipment & Health Care Supplies	Health Care Supplies
NEOG	Neogen Corporation	51.6	0.82	1.61	230.1	115.5	1,908.1	Health Care	Health Care Equipment & Health Care Supplies	Health Care Supplies
VASC	Vascular Solutions, Inc.	29.2	0.40	1.37	262.3	193.1	502.4	Health Care	Health Care Equipment & Health Care Supplies	Health Care Supplies
COO	Cooper Companies, Inc.	165.5	1.99	1.22	747.1	391.6	7,991.2	Health Care	Health Care Equipment & Health Care Supplies	Health Care Supplies
MDSO	Medidata Solutions, Inc.	48.4	0.66	1.38	600.8	449.0	2,624.1	Health Care	Health Care Equipment & Health Care Technology	Health Care Technology
RGEN	Repligen Corporation	26.2	0.32	1.24	332.6	270.9	857.3	Health Care	Pharmaceuticals Biotechnol	Biotechnology
PRXL	PAREXEL International Corporation	65.3	1.11	1.74	615.7	500.8	3,575.9	Health Care	Pharmaceuticals Biotechnol	Life Sciences Tools & Ser
CBM	Cambrex Corporation	34.4	0.43	1.27	711.2	432.2	1,069.8	Health Care	Pharmaceuticals Biotechnol	Life Sciences Tools & Ser
AKRX	Akorn, Inc.	53.5	7.07	15.24	7,154.3	1,647.2	5,765.7	Health Care	Pharmaceuticals Biotechnol	Pharmaceuticals
SGNT	Sagent Pharmaceuticals, Inc.	28.3	1.08	3.96	512.0	243.3	904.3	Health Care	Pharmaceuticals Biotechnol	Pharmaceuticals
MNK	Mallinckrodt Plc	119.6	3.46	2.98	1,690.5	1,164.7	13,932.4	Health Care	Pharmaceuticals Biotechnol	Pharmaceuticals
MDCO	Medicines Company	29.5	0.69	2.41	1,961.6	1,067.7	1,931.5	Health Care	Pharmaceuticals Biotechnol	Pharmaceuticals
ZTS	Zoetis, Inc. Class A	46.6	0.90	1.97	7,861.8	3,907.4	23,371.8	Health Care	Pharmaceuticals Biotechnol	Pharmaceuticals
PRGO	Perrigo Co. Plc	155.3	2.52	1.65	1,728.1	1,061.6	21,858.4	Health Care	Pharmaceuticals Biotechnol	Pharmaceuticals
JNJ	Johnson & Johnson	102.8	1.59	1.57	21,120.7	9,912.1	285,834.3	Health Care	Pharmaceuticals Biotechnol	Pharmaceuticals
LCI	Lannett Company, Inc.	65.2	0.95	1.48	1,549.6	886.8	2,333.2	Health Care	Pharmaceuticals Biotechnol	Pharmaceuticals
MYL	Mylan Inc.	57.2	0.74	1.32	5,394.8	3,192.9	21,468.7	Health Care	Pharmaceuticals Biotechnol	Pharmaceuticals
PCP	Precision Castparts Corp.	217.1	5.46	2.58	2,743.7	1,435.7	30,777.8	Industrials	Capital Goods	Aerospace & Defense
TWI	Titan International, Inc.	10.2	0.81	8.62	2,438.1	611.4	547.4	Industrials	Capital Goods	Agricultural & Farm Machi
PGTI	PGT, Inc.	10.5	1.98	23.38	2,645.8	255.3	497.6	Industrials	Capital Goods	Building Products
AMWD	American Woodmark Corporation	49.1	2.74	5.92	480.6	113.1	776.6	Industrials	Capital Goods	Building Products
APOG	Apogee Enterprises, Inc.	47.8	1.36	2.93	327.2	118.3	1,386.0	Industrials	Capital Goods	Building Products
NX	Quanex Building Products Corporation	19.8	0.27	1.38	353.7	249.1	688.0	Industrials	Capital Goods	Building Products
ORN	Orion Marine Group, Inc.	10.3	0.38	3.85	186.8	109.9	282.4	Industrials	Capital Goods	Construction & Engineerir
AEGN	Aegion Corporation	17.7	0.54	3.15	622.5	248.9	660.9	Industrials	Capital Goods	Construction & Engineerir
FSS	Federal Signal Corporation	16.6	0.25	1.53	492.6	278.0	1,040.9	Industrials	Capital Goods	Construction Machinery &
WIRE	Encore Wire Corporation	36.7	1.10	3.09	183.9	115.8	759.4	Industrials	Capital Goods	Electrical Components & I
VICR	Vicor Corporation	13.3	0.39	3.02	133.0	52.8	356.2	Industrials	Capital Goods	Electrical Components & I
POWL	Powell Industries, Inc.	34.2	0.64	1.91	118.4	90.5	412.2	Industrials	Capital Goods	Electrical Components & I
FELE	Franklin Electric Co., Inc.	36.7	0.50	1.38	596.0	174.5	1,743.3	Industrials	Capital Goods	Electrical Components & I
LDL	Lydall, Inc.	33.0	0.85	2.64	167.0	93.3	566.7	Industrials	Capital Goods	Industrial Machinery
ESE	ESCO Technologies Inc.	38.8	0.48	1.25	186.4	68.8	1,013.9	Industrials	Capital Goods	Industrial Machinery
CIR	CIRCOR International, Inc.	53.9	0.65	1.22	216.9	122.9	952.8	Industrials	Capital Goods	Industrial Machinery
AIT	Applied Industrial Technologies, Inc.	43.9	0.73	1.69	463.5	285.8	1,803.8	Industrials	Capital Goods	Trading Companies & Dis
RRD	R.R. Donnelley & Sons Company	19.6	0.79	4.19	7,704.9	1,795.1	3,924.1	Industrials	Commercial & Profession	Commercial Printing
ECOL	US Ecology, Inc.	47.5	0.94	2.02	245.3	135.2	1,027.3	Industrials	Commercial & Profession	Environmental & Facilities
CLH	Clean Harbors, Inc.	57.0	0.96	1.71	2,733.6	663.9	3,414.6	Industrials	Commercial & Profession	Environmental & Facilities
ABM	ABM Industries Incorporated	31.1	0.39	1.27	267.4	175.9	1,739.1	Industrials	Commercial & Profession	Environmental & Facilities
NSP	Insperty, Inc.	52.4	1.73	3.41	1,280.8	437.4	1,328.0	Industrials	Commercial & Profession	Human Resource & Empl
WAGE	WageWorks, Inc.	59.5	1.76	3.05	422.3	283.3	2,111.4	Industrials	Commercial & Profession	Human Resource & Empl

Company Symbol	Company Name	Current Price 2/26/15	Net Chg	% Chg	Total Volume >50M	Average Daily Volume	Sec Market Value >100 MM	GICS Sector Name	GICS Ind Group Name	GICS Sub Ind Name
CDI	CDI Corp.	18.6	0.37	2.04	71.2	57.9	364.0	Industrials	Commercial & Profession	Human Resource & Empl
MSA	MSA Safety, Inc.	49.8	1.16	2.38	246.3	156.3	1,864.5	Industrials	Commercial & Profession	Office Services & Supplie
TILE	Interface, Inc.	20.1	0.44	2.24	1,468.8	851.4	1,330.1	Industrials	Commercial & Profession	Office Services & Supplie
UTIW	UTi Worldwide Inc.	12.9	0.18	1.41	1,187.3	549.4	1,363.6	Industrials	Transportation	Air Freight & Logistics
EXPD	Expeditors International of Washington, Ir	48.8	0.63	1.31	3,525.6	1,406.4	9,418.0	Industrials	Transportation	Air Freight & Logistics
ALGT	Allegiant Travel Company	184.6	3.08	1.70	196.2	159.4	3,226.7	Industrials	Transportation	Airlines
GWR	Genesee & Wyoming, Inc. Class A	101.9	2.11	2.11	2,054.4	455.3	5,384.6	Industrials	Transportation	Railroads
NANO	Nanometrics Incorporated	18.2	0.24	1.34	102.0	119.3	433.4	Information Technology	Semiconductors & Semici	Semiconductor Equipmen
AVGO	Avago Technologies Limited	129.3	16.57	14.71	12,745.5	1,827.3	33,135.7	Information Technology	Semiconductors & Semici	Semiconductors
QRVO	Qorvo Inc	71.5	4.32	6.43	3,081.0	1,613.7	10,620.0	Information Technology	Semiconductors & Semici	Semiconductors
MSCC	Microsemi Corporation	31.8	0.72	2.31	770.4	596.2	3,028.0	Information Technology	Semiconductors & Semici	Semiconductors
CRUS	Cirrus Logic, Inc.	30.2	0.57	1.92	2,177.8	2,012.5	1,896.4	Information Technology	Semiconductors & Semici	Semiconductors
SYNA	Synaptics Incorporated	85.1	1.53	1.82	1,653.2	959.3	3,124.5	Information Technology	Semiconductors & Semici	Semiconductors
FCS	Fairchild Semiconductor International, Inc	17.3	0.28	1.65	3,254.5	1,364.6	2,050.0	Information Technology	Semiconductors & Semici	Semiconductors
BRCM	Broadcom Corporation Class A	45.7	0.70	1.56	14,292.8	6,201.9	24,769.4	Information Technology	Semiconductors & Semici	Semiconductors
MCRL	Micrel, Incorporated	15.0	0.22	1.49	428.0	270.4	845.7	Information Technology	Semiconductors & Semici	Semiconductors
DIOD	Diodes Incorporated	28.8	0.34	1.20	219.1	159.7	1,370.1	Information Technology	Semiconductors & Semici	Semiconductors
SMTC	Semtech Corporation	28.6	0.33	1.17	534.0	318.8	1,909.1	Information Technology	Semiconductors & Semici	Semiconductors
CRM	salesforce.com, inc.	70.2	7.37	11.72	27,998.0	3,924.7	44,321.4	Information Technology	Software & Services	Application Software
TNGO	Tango, Inc.	12.6	0.29	2.36	406.2	251.4	487.9	Information Technology	Software & Services	Application Software
SLH	Solera Holdings, Inc.	56.6	1.00	1.80	829.4	550.2	3,802.6	Information Technology	Software & Services	Application Software
ININ	Interactive Intelligence Group, Inc.	42.6	0.64	1.52	302.1	130.8	898.6	Information Technology	Software & Services	Application Software
PTC	PTC Inc.	34.7	0.48	1.40	2,329.6	899.8	3,982.2	Information Technology	Software & Services	Application Software
EPIQ	Epiq Systems, Inc.	18.2	0.21	1.17	158.2	81.2	660.8	Information Technology	Software & Services	Application Software
TTEC	TeleTech Holdings, Inc.	25.0	1.13	4.73	167.8	91.0	1,220.3	Information Technology	Software & Services	Data Processing & Outsou
EXLS	ExlService Holdings, Inc.	35.6	0.60	1.71	756.6	136.5	1,169.3	Information Technology	Software & Services	Data Processing & Outsou
MWW	Monster Worldwide, Inc.	6.5	0.37	6.02	6,573.6	2,492.0	592.1	Information Technology	Software & Services	Internet Software & Servic
QNST	QuinStreet, Inc.	6.7	0.21	3.26	322.2	117.4	295.9	Information Technology	Software & Services	Internet Software & Servic
BCOR	Blucora, Inc.	14.7	0.40	2.80	944.3	517.2	599.7	Information Technology	Software & Services	Internet Software & Servic
EGOV	NIC Inc.	17.9	0.45	2.58	657.3	326.4	1,170.8	Information Technology	Software & Services	Internet Software & Servic
GOOGL	Google Inc. Class A	559.3	11.96	2.19	4,738.1	2,256.6	160,481.6	Information Technology	Software & Services	Internet Software & Servic
GOOG	Google Inc. Class C	555.5	11.61	2.13	4,124.7	1,954.7	189,233.1	Information Technology	Software & Services	Internet Software & Servic
LPSN	LivePerson, Inc.	11.6	0.20	1.75	341.1	415.8	634.0	Information Technology	Software & Services	Internet Software & Servic
SP713	S&P 500 / Internet Software & Services -I	403.5	5.81	1.46	52.0	0.0	610,530.3	Information Technology	Software & Services	Internet Software & Servic
SP715	S&P Composite 1500 / Internet Software	12,436.5	168.86	1.38	62.5	0.0	645,419.8	Information Technology	Software & Services	Internet Software & Servic
IGTE	IGATE Corporation	42.0	0.95	2.31	689.0	261.6	3,396.7	Information Technology	Software & Services	IT Consulting & Other Ser
CVLT	CommVault Systems, Inc.	46.8	1.25	2.74	878.4	712.0	2,103.0	Information Technology	Software & Services	Systems Software
VDSI	VASCO Data Security International, Inc.	25.8	0.37	1.46	2,937.8	2,170.3	1,023.0	Information Technology	Software & Services	Systems Software
DGII	Digi International Inc.	10.7	0.35	3.37	108.9	98.8	261.6	Information Technology	Technology Hardware & E	Communications Equipme
CAMP	CalAmp Corp.	19.4	0.40	2.11	1,026.1	461.8	701.7	Information Technology	Technology Hardware & E	Communications Equipme
XXIA	Ixia	11.3	0.21	1.89	2,866.0	424.6	887.9	Information Technology	Technology Hardware & E	Communications Equipme
CSCO	Cisco Systems, Inc.	29.9	0.42	1.42	45,620.1	32,289.9	152,682.7	Information Technology	Technology Hardware & E	Communications Equipme
ROG	Rogers Corporation	79.8	1.46	1.86	173.3	115.1	1,469.2	Information Technology	Technology Hardware & E	Electronic Components
IIVI	II-VI Incorporated	17.7	0.30	1.72	387.5	389.8	1,080.2	Information Technology	Technology Hardware & E	Electronic Components
ESIO	Electro Scientific Industries, Inc.	6.9	0.39	6.00	231.4	113.5	209.4	Information Technology	Technology Hardware & E	Electronic Equipment & In

Company Symbol	Company Name	Current Price 2/26/15	Net Chg	% Chg	Total Volume >50M	Average Daily Volume	Sec Market Value >100 MM	GICS Sector Name	GICS Ind Group Name	GICS Sub Ind Name
FARO	FARO Technologies, Inc.	60.8	2.28	3.90	429.2	98.3	1,050.5	Information Technology	Technology Hardware & E	Electronic Equipment & In
FEIC	FEI Company	79.8	1.11	1.41	779.6	377.9	3,337.8	Information Technology	Technology Hardware & E	Electronic Equipment & In
PKE	Park Electrochemical Corp.	21.8	0.31	1.45	62.9	65.3	455.8	Information Technology	Technology Hardware & E	Electronic Manufacturing ;
NSIT	Insight Enterprises, Inc.	26.9	1.01	3.90	450.9	176.1	1,070.2	Information Technology	Technology Hardware & E	Technology Distributors
SCSC	ScanSource, Inc.	37.7	0.66	1.78	146.4	108.5	1,080.5	Information Technology	Technology Hardware & E	Technology Distributors
QLGC	QLogic Corporation	15.1	0.48	3.29	2,694.7	992.5	1,315.4	Information Technology	Technology Hardware & E	Technology Hardware Sto
SMCI	Super Micro Computer, Inc.	41.1	0.98	2.44	1,691.7	537.9	1,914.2	Information Technology	Technology Hardware & E	Technology Hardware Sto
AAPL	Apple Inc.	130.4	1.63	1.26	165,570.0	65,023.5	759,634.5	Information Technology	Technology Hardware & E	Technology Hardware Sto
CENX	Century Aluminum Company	19.7	0.38	1.94	5,893.1	1,148.3	1,750.1	Materials	Materials	Aluminum
HW	Headwaters Incorporated	16.6	0.32	1.97	2,573.2	815.5	1,221.9	Materials	Materials	Construction Materials
LXU	LSB Industries, Inc.	37.3	1.15	3.18	292.5	113.0	843.2	Materials	Materials	Diversified Chemicals
SMG	Scotts Miracle-Gro Company Class A	66.6	1.53	2.35	674.7	261.4	4,052.5	Materials	Materials	Fertilizers & Agricultural C
MYE	Myers Industries, Inc.	20.0	0.70	3.64	314.6	102.3	628.7	Materials	Materials	Metal & Glass Containers
WPP	Wausau Paper Corp.	9.6	0.30	3.23	308.4	165.7	479.0	Materials	Materials	Paper Products
KS	KapStone Paper and Packaging Corporat	35.0	0.88	2.58	1,390.4	913.4	3,360.0	Materials	Materials	Paper Products
KRA	Kraton Performance Polymers, Inc.	20.1	0.94	4.92	1,373.4	243.7	658.6	Materials	Materials	Specialty Chemicals
BCPC	Balchem Corporation	61.3	1.86	3.13	358.5	159.9	1,885.1	Materials	Materials	Specialty Chemicals
SHLM	A. Schulman, Inc.	43.0	0.92	2.19	266.2	115.1	1,250.4	Materials	Materials	Specialty Chemicals
POL	PolyOne Corporation	40.3	0.54	1.36	777.0	636.2	3,593.4	Materials	Materials	Specialty Chemicals
FF	FutureFuel Corp.	12.6	0.10	1.29	139.9	81.3	548.7	Materials	Materials	Specialty Chemicals
ZEUS	Olympic Steel, Inc.	14.7	0.70	5.16	140.2	39.5	160.9	Materials	Materials	Steel
CAS	A. M. Castle & Co.	5.0	0.13	2.65	489.7	284.5	118.2	Materials	Materials	Steel
TMST	TimkenSteel Corp	30.1	0.61	2.07	429.3	564.7	1,373.2	Materials	Materials	Steel
IRDM	Iridium Communications Inc.	9.9	0.14	1.44	2,100.4	1,116.7	923.4	Telecommunication Servi	Telecommunication Servi	Alternative Carriers
ATNI	Atlantic Tele-Network, Inc.	68.9	2.22	3.33	96.6	43.9	1,096.2	Telecommunication Servi	Telecommunication Servi	Integrated Telecommunic
SPOK	Spok Holdings, Inc.	19.7	0.70	3.68	133.1	68.6	427.4	Telecommunication Servi	Telecommunication Servi	Wireless Telecommunicat
UIL	UIL Holdings Corporation	52.1	9.74	23.01	4,029.9	306.0	2,944.4	Utilities	Utilities	Electric Utilities
AES	AES Corporation	12.6	0.63	5.25	20,833.8	6,170.9	9,005.8	Utilities	Utilities	Independent Power Produ

#### LAGGARDS

#### Laggards. Highlighting inflections and themes. Sorted by Sector/Group.

DAN	Dana Holding Corporation	22.0	-0.36	-1.61	2,966.5	2,852.8	3,628.6	Consumer Discretionary	Automobiles & Componer	Auto Parts & Equipment
SMP	Standard Motor Products, Inc.	41.5	-1.10	-2.58	306.5	62.0	950.3	Consumer Discretionary	Automobiles & Componer	Auto Parts & Equipment
PVH	PVH Corp.	108.0	-3.00	-2.70	2,812.9	1,267.9	8,903.1	Consumer Discretionary	Consumer Durables & Ap	Apparel Accessories & Lu
ICON	Iconix Brand Group, Inc.	34.2	-1.06	-3.01	4,175.8	995.2	1,639.8	Consumer Discretionary	Consumer Durables & Ap	Apparel Accessories & Lu
ETH	Ethan Allen Interiors Inc.	27.4	-0.89	-3.15	533.7	311.8	791.3	Consumer Discretionary	Consumer Durables & Ap	Home Furnishings
MDC	M.D.C. Holdings, Inc.	26.9	-0.40	-1.46	1,876.5	1,020.7	1,316.0	Consumer Discretionary	Consumer Durables & Ap	Homebuilding
KBH	KB Home	13.9	-0.21	-1.48	5,840.2	4,880.4	1,281.8	Consumer Discretionary	Consumer Durables & Ap	Homebuilding
APOL	Apollo Education Group, Inc. Class A	27.9	-0.58	-2.04	1,781.1	970.2	3,011.5	Consumer Discretionary	Consumer Services	Education Services
VAC	Marriott Vacations Worldwide Corporator	75.7	-1.42	-1.84	329.7	133.5	2,468.1	Consumer Discretionary	Consumer Services	Hotels Resorts & Cruise L
DIN	DineEquity, Inc.	109.7	-2.16	-1.93	678.7	177.0	2,079.2	Consumer Discretionary	Consumer Services	Restaurants
PLKI	Popeyes Louisiana Kitchen, Inc.	60.1	-6.14	-9.27	2,966.5	416.7	1,402.2	Consumer Discretionary	Consumer Services	Restaurants
DISCA	Discovery Communications, Inc. Class A	32.4	-0.49	-1.50	9,647.7	5,757.1	4,822.6	Consumer Discretionary	Media	Broadcasting
SNI	Scripps Networks Interactive, Inc. Class A	72.9	-1.47	-1.67	1,554.0	961.9	7,125.0	Consumer Discretionary	Media	Broadcasting
DISCK	Discovery Communications, Inc. Class C	30.8	-0.54	-1.72	9,400.6	3,656.0	8,760.8	Consumer Discretionary	Media	Broadcasting

Company Symbol	Company Name	Current Price 2/26/15	Net Chg	% Chg	Total Volume >50M	Average Daily Volume	Sec Market Value >100 MM	GICS Sector Name	GICS Ind Group Name	GICS Sub Ind Name
TWC	Time Warner Cable Inc.	152.4	-2.22	-1.44	5,958.5	2,375.4	42,809.2	Consumer Discretionary	Media	Cable & Satellite
DWA	DreamWorks Animation SKG, Inc. Class A	21.8	-0.58	-2.61	3,460.2	1,186.1	1,686.5	Consumer Discretionary	Media	Movies & Entertainment
MW	Men's Wearhouse, Inc.	50.2	-0.79	-1.55	1,112.4	542.0	2,416.6	Consumer Discretionary	Retailing	Apparel Retail
TJX	TJX Companies, Inc.	68.1	-1.31	-1.89	14,617.0	3,250.3	46,893.4	Consumer Discretionary	Retailing	Apparel Retail
ANN	ANN INC.	34.8	-0.73	-2.06	1,460.3	630.9	1,589.1	Consumer Discretionary	Retailing	Apparel Retail
ANF	Abercrombie & Fitch Co. Class A	24.0	-0.83	-3.34	6,384.4	2,059.3	1,666.1	Consumer Discretionary	Retailing	Apparel Retail
HSNI	HSN, Inc.	64.9	-2.65	-3.92	741.3	448.2	3,400.9	Consumer Discretionary	Retailing	Catalog Retail
BBY	Best Buy Co., Inc.	37.6	-0.75	-1.96	8,962.5	4,953.0	13,171.0	Consumer Discretionary	Retailing	Computer & Electronics R
LKQ	LKQ Corporation	24.8	-3.07	-11.02	16,774.6	1,484.7	7,509.2	Consumer Discretionary	Retailing	Distributors
LL	Lumber Liquidators Holdings, Inc.	49.2	-1.40	-2.77	22,137.1	1,397.4	1,332.6	Consumer Discretionary	Retailing	Home Improvement Retail
BBBY	Bed Bath & Beyond Inc.	73.8	-1.13	-1.51	5,387.9	2,030.9	13,688.1	Consumer Discretionary	Retailing	Homefurnishing Retail
WSM	Williams-Sonoma, Inc.	79.8	-1.34	-1.65	1,102.5	635.6	7,351.5	Consumer Discretionary	Retailing	Homefurnishing Retail
EXPE	Expedia, Inc.	93.3	-1.36	-1.44	3,284.3	3,165.4	10,623.0	Consumer Discretionary	Retailing	Internet Retail
SPLS	Staples, Inc.	16.4	-0.26	-1.56	18,074.5	13,759.2	10,488.4	Consumer Discretionary	Retailing	Specialty Stores
OUTR	Outerwall Inc.	63.7	-1.60	-2.45	1,037.8	607.7	1,207.3	Consumer Discretionary	Retailing	Specialty Stores
DF	Dean Foods Company	16.1	-0.23	-1.41	3,097.1	2,765.2	1,514.0	Consumer Staples	Food Beverage & Tobacc	Packaged Foods & Meats
CPB	Campbell Soup Company	46.5	-0.70	-1.48	5,063.9	1,814.7	14,561.1	Consumer Staples	Food Beverage & Tobacc	Packaged Foods & Meats
CVGW	Calavo Growers, Inc.	42.0	-1.13	-2.62	158.3	114.1	726.2	Consumer Staples	Food Beverage & Tobacc	Packaged Foods & Meats
CLD	Cloud Peak Energy Inc.	8.1	-0.42	-4.92	2,588.5	2,154.2	494.9	Energy	Energy	Coal & Consumable Fuels
CNX	CONSOL Energy Inc.	32.3	-2.02	-5.89	3,984.0	3,162.3	7,437.6	Energy	Energy	Coal & Consumable Fuels
BTU	Peabody Energy Corporation	7.4	-0.50	-6.31	15,431.7	12,723.2	2,041.9	Energy	Energy	Coal & Consumable Fuels
CVX	Chevron Corporation	107.1	-1.52	-1.40	10,647.3	8,831.2	201,292.1	Energy	Energy	Integrated Oil & Gas
HES	Hess Corporation	75.4	-1.22	-1.59	4,749.5	3,581.3	22,551.2	Energy	Energy	Integrated Oil & Gas
OXY	Occidental Petroleum Corporation	78.3	-1.89	-2.36	7,583.4	5,266.4	60,349.5	Energy	Energy	Integrated Oil & Gas
RIG	Transocean Ltd.	15.8	-0.25	-1.56	31,013.1	12,594.4	5,719.8	Energy	Energy	Oil & Gas Drilling
HP	Helmerich & Payne, Inc.	66.2	-1.45	-2.14	4,612.6	3,069.3	7,125.8	Energy	Energy	Oil & Gas Drilling
PES	Pioneer Energy Services Corp.	5.2	-0.18	-3.33	1,889.7	1,661.3	334.0	Energy	Energy	Oil & Gas Drilling
DO	Diamond Offshore Drilling, Inc.	29.1	-1.15	-3.81	4,816.1	1,920.8	3,984.1	Energy	Energy	Oil & Gas Drilling
NBR	Nabors Industries Ltd.	12.5	-0.52	-4.00	13,259.9	10,918.7	3,615.1	Energy	Energy	Oil & Gas Drilling
SPN15	S&P Composite 1500 / Oil & Gas Drilling	433.6	-18.40	-4.07	62.9	0.0	36,943.2	Energy	Energy	Oil & Gas Drilling
RDC	Rowan Cos. Plc Class A	20.7	-0.88	-4.08	10,634.5	2,639.6	2,576.7	Energy	Energy	Oil & Gas Drilling
UNT	Unit Corporation	30.5	-1.36	-4.28	1,972.3	601.5	1,517.2	Energy	Energy	Oil & Gas Drilling
ATW	Atwood Oceanics, Inc.	30.4	-1.41	-4.43	3,907.4	2,402.3	1,965.2	Energy	Energy	Oil & Gas Drilling
NE	Noble Corporation plc	16.6	-1.23	-6.90	15,287.0	7,720.2	4,108.5	Energy	Energy	Oil & Gas Drilling
ESV	Ensco plc	24.4	-2.17	-8.16	19,011.3	5,224.1	5,718.2	Energy	Energy	Oil & Gas Drilling
CAM	Cameron International Corporation	47.3	-0.70	-1.46	6,031.3	3,851.5	9,153.4	Energy	Energy	Oil & Gas Equipment & Se
SLB	Schlumberger NV	83.9	-1.32	-1.55	14,055.9	8,298.6	107,203.5	Energy	Energy	Oil & Gas Equipment & Se
SPN19	S&P Composite 1500 / Oil & Gas Equipm	676.7	-11.28	-1.64	66.2	0.0	249,220.8	Energy	Energy	Oil & Gas Equipment & Se
BAS	Basic Energy Services, Inc.	7.1	-0.12	-1.67	4,094.8	2,982.4	295.0	Energy	Energy	Oil & Gas Equipment & Se
GIFI	Gulf Island Fabrication, Inc.	16.1	-0.29	-1.77	56.3	42.3	233.9	Energy	Energy	Oil & Gas Equipment & Se
ERA	Era Group, Inc.	22.3	-0.41	-1.81	119.9	94.1	454.3	Energy	Energy	Oil & Gas Equipment & Se
BHI	Baker Hughes Incorporated	62.5	-1.18	-1.85	6,034.0	4,870.2	27,157.6	Energy	Energy	Oil & Gas Equipment & Se
SPN	Superior Energy Services, Inc.	21.9	-0.48	-2.14	7,244.2	3,698.1	3,334.1	Energy	Energy	Oil & Gas Equipment & Se
HAL	Halliburton Company	42.7	-0.98	-2.24	27,291.1	16,693.2	36,281.0	Energy	Energy	Oil & Gas Equipment & Se
FTI	FMC Technologies, Inc.	40.0	-0.97	-2.37	6,624.8	4,319.3	9,253.2	Energy	Energy	Oil & Gas Equipment & Se

Company Symbol	Company Name	Current Price 2/26/15	Net Chg	% Chg	Total Volume >50M	Average Daily Volume	Sec Market Value >100 MM	GICS Sector Name	GICS Ind Group Name	GICS Sub Ind Name
NOV	National Oilwell Varco, Inc.	53.3	-1.47	-2.69	8,851.5	8,281.9	21,837.2	Energy	Energy	Oil & Gas Equipment & Se
DRQ	Dril-Quip, Inc.	69.9	-1.98	-2.76	1,496.1	546.2	2,758.4	Energy	Energy	Oil & Gas Equipment & Se
GLF	GulfMark Offshore, Inc. Class A	16.2	-0.48	-2.88	878.8	745.0	407.2	Energy	Energy	Oil & Gas Equipment & Se
CRR	CARBO Ceramics Inc.	35.7	-1.30	-3.52	2,082.9	1,254.4	830.6	Energy	Energy	Oil & Gas Equipment & Se
SYRG	Synergy Resources Corporation	11.9	-0.19	-1.58	2,936.6	2,428.2	1,231.7	Energy	Energy	Oil & Gas Exploration & P
CRC	California Resources Corp	7.0	-0.13	-1.82	14,357.3	9,264.9	2,703.1	Energy	Energy	Oil & Gas Exploration & P
PDCE	PDC Energy Inc	53.7	-1.08	-1.97	2,627.0	1,339.1	1,931.6	Energy	Energy	Oil & Gas Exploration & P
COP	ConocoPhillips	65.9	-1.68	-2.49	13,987.5	8,518.6	81,091.8	Energy	Energy	Oil & Gas Exploration & P
PXD	Pioneer Natural Resources Company	156.0	-4.32	-2.69	2,873.0	2,477.6	23,242.9	Energy	Energy	Oil & Gas Exploration & P
ROSE	Rosetta Resources Inc.	18.4	-0.52	-2.75	9,577.0	3,522.3	1,131.0	Energy	Energy	Oil & Gas Exploration & P
APA	Apache Corporation	65.7	-2.09	-3.08	6,698.7	5,022.3	24,784.0	Energy	Energy	Oil & Gas Exploration & P
EOG	EOG Resources, Inc.	90.1	-2.90	-3.12	11,210.1	6,119.6	49,431.3	Energy	Energy	Oil & Gas Exploration & P
SPN31	S&P Composite 1500 / Oil & Gas Explora	605.3	-20.08	-3.21	226.1	0.0	390,105.0	Energy	Energy	Oil & Gas Exploration & P
SPN29	S&P 500 / Oil & Gas Exploration & Produ	543.7	-18.17	-3.23	155.8	0.0	362,557.8	Energy	Energy	Oil & Gas Exploration & P
BCEI	Bonanza Creek Energy, Inc.	29.2	-1.00	-3.31	2,232.0	1,811.5	1,442.6	Energy	Energy	Oil & Gas Exploration & P
COG	Cabot Oil & Gas Corporation	28.9	-1.01	-3.38	16,002.2	7,335.8	11,936.3	Energy	Energy	Oil & Gas Exploration & P
MRO	Marathon Oil Corporation	28.0	-1.06	-3.65	13,187.7	7,869.7	18,897.1	Energy	Energy	Oil & Gas Exploration & P
XEC	Cimarex Energy Co.	112.7	-4.37	-3.73	2,805.4	1,623.5	9,871.3	Energy	Energy	Oil & Gas Exploration & P
NOG	Northern Oil and Gas, Inc.	8.2	-0.32	-3.77	3,915.9	2,165.9	497.5	Energy	Energy	Oil & Gas Exploration & P
CHK	Chesapeake Energy Corporation	17.2	-0.78	-4.34	93,359.9	14,148.1	11,439.9	Energy	Energy	Oil & Gas Exploration & P
EQT	EQT Corporation	79.8	-3.67	-4.40	3,081.8	1,652.8	12,114.9	Energy	Energy	Oil & Gas Exploration & P
DVN	Devon Energy Corporation	62.6	-2.90	-4.43	6,910.8	4,218.6	25,583.0	Energy	Energy	Oil & Gas Exploration & P
MCF	Contango Oil & Gas Company	24.3	-1.15	-4.51	271.7	179.2	471.6	Energy	Energy	Oil & Gas Exploration & P
EGN	Energen Corporation	65.3	-3.20	-4.67	2,032.7	1,131.2	4,776.6	Energy	Energy	Oil & Gas Exploration & P
SM	SM Energy Company	50.4	-2.52	-4.76	7,311.0	2,070.3	3,402.2	Energy	Energy	Oil & Gas Exploration & P
CRZO	Carrizo Oil & Gas, Inc.	49.0	-2.55	-4.95	2,174.8	1,373.9	2,260.3	Energy	Energy	Oil & Gas Exploration & P
QEP	QEP Resources, Inc.	21.3	-1.12	-4.99	10,578.7	2,900.9	3,742.7	Energy	Energy	Oil & Gas Exploration & P
NBL	Noble Energy, Inc.	47.3	-2.49	-5.00	22,026.4	3,463.8	17,135.8	Energy	Energy	Oil & Gas Exploration & P
BBG	Bill Barrett Corporation	10.2	-0.57	-5.30	8,835.9	2,344.8	504.7	Energy	Energy	Oil & Gas Exploration & P
RRC	Range Resources Corporation	50.8	-3.09	-5.73	9,955.0	3,061.0	8,584.0	Energy	Energy	Oil & Gas Exploration & P
SWN	Southwestern Energy Company	26.4	-1.62	-5.79	16,992.9	9,033.8	10,131.3	Energy	Energy	Oil & Gas Exploration & P
DNR	Denbury Resources Inc.	8.4	-0.56	-6.26	22,868.7	14,947.5	2,954.5	Energy	Energy	Oil & Gas Exploration & P
NFX	Newfield Exploration Company	33.6	-2.40	-6.67	31,629.0	4,081.9	4,616.2	Energy	Energy	Oil & Gas Exploration & P
WPX	WPX Energy, Inc. Class A	10.8	-1.19	-9.97	13,696.0	5,426.7	2,186.2	Energy	Energy	Oil & Gas Exploration & P
CRK	Comstock Resources, Inc.	5.3	-0.64	-10.87	5,473.7	3,320.8	250.0	Energy	Energy	Oil & Gas Exploration & P
SE	Spectra Energy Corp	35.4	-0.71	-1.97	5,935.6	5,656.0	23,760.1	Energy	Energy	Oil & Gas Storage & Tran
KMI	Kinder Morgan Inc Class P	41.2	-0.89	-2.11	18,059.2	10,053.8	94,680.3	Energy	Energy	Oil & Gas Storage & Tran
OKE	ONEOK, Inc.	44.0	-1.42	-3.13	4,879.8	2,122.1	9,163.4	Energy	Energy	Oil & Gas Storage & Tran
BAC	Bank of America Corporation	16.0	-0.45	-2.73	217,956.2	93,914.7	168,683.9	Financials	Banks	Diversified Banks
EV	Eaton Vance Corp.	41.6	-0.69	-1.63	3,348.4	850.8	4,903.6	Financials	Diversified Financials	Asset Management & Cus
VRTS	Virtus Investment Partners, Inc.	137.0	-3.01	-2.15	85.3	56.2	1,241.1	Financials	Diversified Financials	Asset Management & Cus
STT	State Street Corporation	74.8	-2.10	-2.73	9,472.2	3,282.4	30,842.7	Financials	Diversified Financials	Asset Management & Cus
ECPG	Encore Capital Group, Inc.	42.7	-0.76	-1.75	482.7	227.5	1,097.0	Financials	Diversified Financials	Consumer Finance
MS	Morgan Stanley	36.1	-0.53	-1.45	17,689.9	10,108.3	70,584.0	Financials	Diversified Financials	Investment Banking & Bro
CBOE	CBOE Holdings, Inc.	60.9	-1.01	-1.63	1,357.0	677.5	5,111.6	Financials	Diversified Financials	Specialized Finance

Company Symbol	Company Name	Current Price 2/26/15	Net Chg	% Chg	Total Volume >50M	Average Daily Volume	Sec Market Value >100 MM	GICS Sector Name	GICS Ind Group Name	GICS Sub Ind Name
EHTH	eHealth, Inc.	9.4	-0.72	-7.11	1,005.9	322.1	167.7	Financials	Insurance	Insurance Brokers
SAFT	Safety Insurance Group, Inc.	58.9	-1.60	-1.49	99.7	35.6	883.9	Financials	Insurance	Property & Casualty Insur.
PRA	ProAssurance Corporation	45.1	-1.19	-2.57	630.6	196.7	2,517.8	Financials	Insurance	Property & Casualty Insur.
LPT	Liberty Property Trust	37.1	-0.72	-1.91	1,623.7	770.4	5,553.3	Financials	Real Estate	Diversified REITs
CUZ	Cousins Properties Incorporated	10.5	-0.37	-3.40	3,061.9	1,769.8	2,272.6	Financials	Real Estate	Diversified REITs
LTC	LTC Properties, Inc.	43.9	-0.63	-1.42	245.9	162.8	1,529.5	Financials	Real Estate	Health Care REITs
HR	Healthcare Realty Trust Incorporated	28.3	-0.42	-1.46	1,222.8	654.3	2,817.3	Financials	Real Estate	Health Care REITs
CTRE	CareTrust REIT Inc	12.8	-0.22	-1.69	198.7	196.4	403.7	Financials	Real Estate	Health Care REITs
HCN	Health Care REIT, Inc.	76.1	-1.56	-2.01	7,256.2	3,045.2	25,096.5	Financials	Real Estate	Health Care REITs
AVIV	Aviv REIT, Inc.	35.9	-0.74	-2.02	427.8	229.6	1,738.9	Financials	Real Estate	Health Care REITs
MPW	Medical Properties Trust, Inc.	15.0	-0.33	-2.15	3,306.6	2,167.3	3,055.3	Financials	Real Estate	Health Care REITs
OHI	Omega Healthcare Investors, Inc.	40.0	-0.88	-2.15	3,683.4	1,967.5	5,485.0	Financials	Real Estate	Health Care REITs
EGP	EastGroup Properties, Inc.	62.6	-0.93	-1.46	408.3	209.9	2,014.7	Financials	Real Estate	Industrial REITs
COR	CoreSite Realty Corporation	46.9	-0.68	-1.43	323.3	147.2	1,020.6	Financials	Real Estate	Office REITs
FSP	Franklin Street Properties Corp.	12.6	-0.21	-1.65	434.3	331.4	1,257.3	Financials	Real Estate	Office REITs
GOV	Government Properties Income Trust	23.1	-0.41	-1.74	1,847.4	609.2	1,627.4	Financials	Real Estate	Office REITs
BMR	BioMed Realty Trust, Inc.	22.2	-0.63	-2.76	3,813.0	1,915.9	4,518.3	Financials	Real Estate	Office REITs
PPS	Post Properties, Inc.	56.3	-0.79	-1.38	642.7	454.7	3,064.0	Financials	Real Estate	Residential REITs
HME	Home Properties, Inc.	66.4	-1.11	-1.64	617.6	416.6	3,835.5	Financials	Real Estate	Residential REITs
MAA	Mid-America Apartment Communities, Inc	72.0	-1.48	-2.01	902.7	616.7	5,419.1	Financials	Real Estate	Residential REITs
SKT	Tanger Factory Outlet Centers, Inc.	35.5	-0.57	-1.58	1,116.7	822.6	3,385.8	Financials	Real Estate	Retail REITs
ROIC	Retail Opportunity Investments Corp.	16.7	-0.28	-1.65	1,113.2	433.1	1,552.9	Financials	Real Estate	Retail REITs
PEI	Pennsylvania Real Estate Investment Tru	22.9	-0.62	-1.74	1,339.4	566.8	1,580.4	Financials	Real Estate	Retail REITs
SPG	Simon Property Group, Inc.	187.1	-3.34	-1.75	2,306.9	1,341.3	58,160.9	Financials	Real Estate	Retail REITs
O	Realty Income Corporation	49.8	-1.29	-2.15	4,974.1	2,737.1	11,209.4	Financials	Real Estate	Retail REITs
SSS	Sovran Self Storage, Inc.	91.8	-1.42	-1.52	864.0	189.8	3,136.2	Financials	Real Estate	Specialized REITs
RMD	ResMed Inc.	64.2	-1.03	-1.58	1,003.4	1,161.3	9,029.3	Health Care	Health Care Equipment &	Health Care Equipment
BABY	Natus Medical Incorporated	36.0	-1.07	-2.89	756.6	233.6	1,170.8	Health Care	Health Care Equipment &	Health Care Equipment
ANIK	Anika Therapeutics, Inc.	40.0	-5.25	-11.61	805.2	133.1	579.6	Health Care	Health Care Equipment &	Health Care Supplies
UTHR	United Therapeutics Corporation	155.6	-2.34	-1.48	1,775.0	505.2	7,260.3	Health Care	Pharmaceuticals Biotechnr	Biotechnology
LGND	Ligand Pharmaceuticals Incorporated	55.8	-0.87	-1.53	840.3	267.4	1,092.8	Health Care	Pharmaceuticals Biotechnr	Biotechnology
SPPI	Spectrum Pharmaceuticals, Inc.	6.2	-0.16	-2.52	4,244.9	1,447.1	407.1	Health Care	Pharmaceuticals Biotechnr	Biotechnology
LMNX	Luminex Corporation	16.0	-0.24	-1.48	419.1	462.6	684.0	Health Care	Pharmaceuticals Biotechnr	Life Sciences Tools & Ser
AVAV	AeroVironment, Inc.	27.5	-0.40	-1.43	175.2	143.4	642.1	Industrials	Capital Goods	Aerospace & Defense
ASEI	American Science and Engineering, Inc.	51.3	-0.78	-1.50	85.3	67.0	379.1	Industrials	Capital Goods	Aerospace & Defense
KLXI	KLX Inc	40.5	-0.62	-1.51	1,854.0	1,053.1	2,134.0	Industrials	Capital Goods	Aerospace & Defense
TXT	Textron Inc.	44.2	-0.76	-1.69	3,915.9	2,125.9	12,204.1	Industrials	Capital Goods	Aerospace & Defense
OA	Orbital ATK, Inc.	67.7	-1.22	-1.77	1,051.5	946.9	4,010.5	Industrials	Capital Goods	Aerospace & Defense
AIR	AAR CORP.	28.6	-0.64	-2.19	351.7	198.6	1,136.4	Industrials	Capital Goods	Aerospace & Defense
EGL	Engility Holdings, Inc.	46.5	-1.05	-2.21	185.4	109.9	817.1	Industrials	Capital Goods	Aerospace & Defense
TASR	TASER International, Inc.	22.7	-4.37	-16.14	15,071.8	1,289.6	1,191.3	Industrials	Capital Goods	Aerospace & Defense
FBHS	Fortune Brands Home & Security, Inc.	46.9	-0.68	-1.43	2,649.0	1,783.4	7,399.3	Industrials	Capital Goods	Building Products
MAS	Masco Corporation	26.2	-0.57	-2.13	5,142.3	3,804.1	9,165.1	Industrials	Capital Goods	Building Products
KBR	KBR, Inc.	17.9	-0.27	-1.49	2,480.3	2,130.3	2,595.5	Industrials	Capital Goods	Construction & Engineerir
EME	EMCOR Group, Inc.	43.5	-0.68	-1.54	656.3	225.0	2,817.8	Industrials	Capital Goods	Construction & Engineerir

Company Symbol	Company Name	Current Price 2/26/15	Net Chg	% Chg	Total Volume >50M	Average Daily Volume	Sec Market Value >100 MM	GICS Sector Name	GICS Ind Group Name	GICS Sub Ind Name
FLR	Fluor Corporation	58.1	-1.06	-1.79	3,160.3	2,148.8	8,589.6	Industrials	Capital Goods	Construction & Engineerin
CAT	Caterpillar Inc.	83.8	-1.35	-1.59	7,906.8	7,527.2	50,796.8	Industrials	Capital Goods	Construction Machinery &
SXI	Standex International Corporation	72.6	-1.10	-1.49	109.5	66.9	926.7	Industrials	Capital Goods	Industrial Machinery
JBT	John Bean Technologies Corporation	34.4	-0.80	-2.27	165.7	90.9	1,002.6	Industrials	Capital Goods	Industrial Machinery
HSC	Harsco Corporation	16.7	-0.76	-4.35	2,573.5	490.6	1,350.3	Industrials	Capital Goods	Industrial Machinery
VRTV	Veritiv Corp	49.5	-1.22	-2.41	70.2	50.6	791.8	Industrials	Capital Goods	Trading Companies & Dis
DNOW	NOW Inc	21.4	-0.81	-3.66	3,344.4	1,635.7	2,285.9	Industrials	Capital Goods	Trading Companies & Dis
NLSN	Nielsen N.V.	45.8	-0.69	-1.48	4,388.5	2,355.2	17,000.1	Industrials	Commercial & Profession	Research & Consulting Se
DAL	Delta Air Lines, Inc.	45.9	-0.92	-1.96	25,127.4	12,587.7	37,850.6	Industrials	Transportation	Airlines
CSX	CSX Corporation	34.3	-0.90	-2.56	15,863.9	6,000.7	33,986.3	Industrials	Transportation	Railroads
SUNE	SunEdison, Inc.	22.3	-0.57	-2.49	23,144.1	10,484.1	6,037.1	Information Technology	Semiconductors & Semic	Semiconductor Equipmen
ADSK	Autodesk, Inc.	61.0	-1.00	-1.61	5,673.2	1,679.0	13,881.1	Information Technology	Software & Services	Application Software
MENT	Mentor Graphics Corporation	24.6	-0.69	-2.73	1,606.8	630.7	2,826.9	Information Technology	Software & Services	Application Software
ACIW	ACI Worldwide, Inc.	19.9	-0.56	-2.74	1,849.3	457.5	2,286.1	Information Technology	Software & Services	Application Software
MA	MasterCard Incorporated Class A	91.3	-1.41	-1.52	11,809.5	5,921.8	101,413.7	Information Technology	Software & Services	Data Processing & Outso
PAY	VeriFone Systems, Inc.	35.3	-0.71	-1.97	2,456.5	1,541.9	4,006.8	Information Technology	Software & Services	Data Processing & Outso
CLGX	CoreLogic, Inc.	33.7	-0.74	-2.15	2,804.6	473.0	3,020.6	Information Technology	Software & Services	Data Processing & Outso
XRX	Xerox Corporation	13.4	-0.34	-2.48	18,933.5	7,271.3	14,859.0	Information Technology	Software & Services	Data Processing & Outso
SYMC	Symantec Corporation	25.1	-0.44	-1.73	6,935.8	3,630.5	17,093.6	Information Technology	Software & Services	Systems Software
ROVI	Rovi Corporation	22.9	-1.27	-5.25	2,396.6	555.4	2,109.1	Information Technology	Software & Services	Systems Software
JNPR	Juniper Networks, Inc.	24.1	-0.39	-1.59	8,296.2	4,777.4	9,812.5	Information Technology	Technology Hardware & E	Communications Equipme
ADTN	ADTRAN, Inc.	21.3	-0.69	-3.14	1,799.6	584.2	1,136.1	Information Technology	Technology Hardware & E	Communications Equipme
KN	Knowles Corp.	19.3	-0.35	-1.79	1,991.9	2,234.8	1,637.6	Information Technology	Technology Hardware & E	Electronic Components
DTSI	DTS, Inc.	29.1	-1.05	-3.49	316.7	142.1	499.4	Information Technology	Technology Hardware & E	Electronic Components
DAKT	Daktronics, Inc.	10.2	-0.77	-6.99	1,228.0	213.4	446.0	Information Technology	Technology Hardware & E	Electronic Equipment & In
HPQ	Hewlett-Packard Company	34.0	-0.66	-1.90	95,389.2	12,477.9	62,152.8	Information Technology	Technology Hardware & E	Technology Hardware Sto
CBT	Cabot Corporation	45.4	-0.75	-1.62	716.0	468.4	2,894.7	Materials	Materials	Commodity Chemicals
LYB	LyondellBasell Industries NV	86.8	-2.84	-2.39	9,459.0	5,074.6	41,392.1	Materials	Materials	Commodity Chemicals
RTI	RTI International Metals, Inc.	27.9	-0.51	-1.80	256.5	208.8	857.4	Materials	Materials	Diversified Metals & Minin
FCX	Freeport-McMoRan, Inc.	21.1	-0.39	-1.81	25,483.6	21,945.2	21,935.8	Materials	Materials	Diversified Metals & Minin
IPI	Intrepid Potash, Inc.	14.0	-0.29	-2.03	937.1	713.6	1,063.2	Materials	Materials	Fertilizers & Agricultural C
MON	Monsanto Company	120.0	-4.26	-3.43	6,940.4	2,368.8	58,017.7	Materials	Materials	Fertilizers & Agricultural C
LPX	Louisiana-Pacific Corporation	17.0	-0.46	-2.63	4,301.7	2,782.0	2,423.3	Materials	Materials	Forest Products
SWC	Stillwater Mining Company	14.5	-0.32	-2.16	3,322.5	1,194.8	1,743.9	Materials	Materials	Precious Metals & Minera
FTK	Flotek Industries, Inc.	17.2	-0.50	-2.83	1,463.1	1,072.8	915.2	Materials	Materials	Specialty Chemicals
STLD	Steel Dynamics, Inc.	18.6	-0.30	-1.59	6,976.1	4,040.1	4,471.7	Materials	Materials	Steel
SXC	SunCoke Energy, Inc.	17.7	-0.41	-2.26	926.4	559.4	1,175.7	Materials	Materials	Steel
X	United States Steel Corporation	24.2	-0.68	-2.73	10,955.3	11,822.6	3,529.4	Materials	Materials	Steel
CNSL	Consolidated Communications Holdings,	21.8	-1.48	-6.35	1,059.3	214.0	1,101.5	Telecommunication Servi	Telecommunication Servi	Integrated Telecommunica
TDS	Telephone and Data Systems, Inc.	25.2	-1.30	-4.91	1,269.5	585.3	2,536.9	Telecommunication Servi	Telecommunication Servi	Wireless Telecommunica
EXC	Exelon Corporation	34.0	-0.53	-1.54	16,412.3	7,238.3	29,199.9	Utilities	Utilities	Electric Utilities
GXP	Great Plains Energy Incorporated	26.7	-0.42	-1.55	3,284.1	1,186.1	4,118.2	Utilities	Utilities	Electric Utilities
EE	El Paso Electric Company	37.4	-0.68	-1.79	407.8	125.9	1,509.8	Utilities	Utilities	Electric Utilities
OGE	OGE Energy Corp.	32.7	-1.08	-3.19	2,998.6	1,223.2	6,523.7	Utilities	Utilities	Electric Utilities
NFG	National Fuel Gas Company	64.8	-2.81	-4.16	1,033.9	581.1	5,461.5	Utilities	Utilities	Gas Utilities



Company Symbol	Company Name	Current Price 2/26/15	Net Chg	% Chg	Total Volume >50M	Average Daily Volume	Sec Market Value >100 MM	GICS Sector Name	GICS Ind Group Name	GICS Sub Ind Name
NRG	NRG Energy, Inc.	24.8	-0.61	-2.40	6,579.4	3,837.9	8,375.0	Utilities	Utilities	Independent Power Produ
AEE	Ameren Corporation	42.5	-0.60	-1.39	4,860.0	1,960.6	10,319.3	Utilities	Utilities	Multi-Utilities
WEC	Wisconsin Energy Corporation	50.8	-0.78	-1.51	3,212.7	2,074.4	11,454.0	Utilities	Utilities	Multi-Utilities
SCG	SCANA Corporation	57.0	-1.03	-1.77	2,403.2	1,110.8	8,128.2	Utilities	Utilities	Multi-Utilities
CNP	CenterPoint Energy, Inc.	21.0	-0.55	-2.55	11,143.3	4,119.8	9,034.3	Utilities	Utilities	Multi-Utilities
MDU	MDU Resources Group, Inc.	22.5	-0.64	-2.77	1,999.7	1,852.0	4,366.7	Utilities	Utilities	Multi-Utilities

Disclaimer: The information contained herein is privileged, confidential and protected from disclosure. Any unauthorized disclosure distribution, dissemination or copying of this material or any attachment is strictly prohibited; such information, whether derived from Vermilion Technical Research, LLC or from any oral or written communication by way of opinion, advice, or otherwise with a principal of the company is not warranted in any manner whatsoever, is for the use of our customers only and may be obtained from internal and external research sources considered to be reliable. It is not necessarily complete and its accuracy is not guaranteed by Vermilion Technical Research, LLC, its operating entity or the principals therein. Neither the information nor any opinion expressed constitutes a solicitation for the purchase of any future or security referred to in Vermilion research publications. Principals of Vermilion Technical Research, LLC may or may not hold, or be short of, securities discussed herein, or of any other securities, at any time. The foregoing also expressly applies to any trial subscription.