

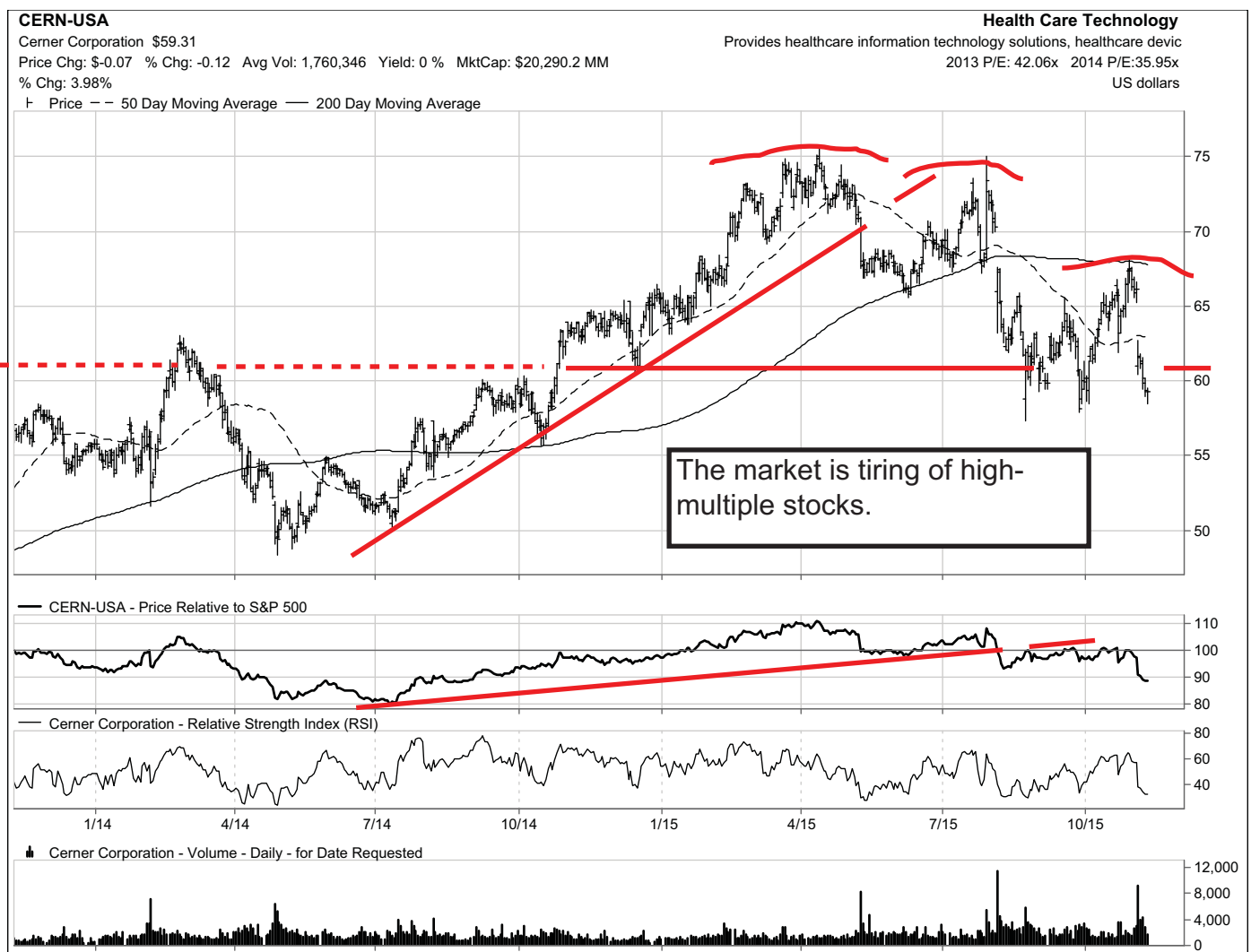
### The “Flip” Side

For investors who can short . . . or own deteriorating longs

11/11/15

Charts highlighted: ABT, ACLS, ADM, AKAM, ALB, ATHM, ATML, CAKE, CERN, CHRW, CMC, CNC, CVS, DPZ, EV, FFIV, FII, FOXA, FTNT, GIII, HUB.B, JACK, JNS, JOY, KBH, KEYS, KRC, NCR, NTCT, PAY, PKG, SCI, STJ, STLD, TGT, TIME, TPH, VFC, VSH, and WBA. .

**Short Shots** is a collection of technically vulnerable charts culled from the “Negative Inflecting” and “Tippy” columns within our *Weekly Compass* report or from various technical screening processes. The charts contained in this report have developed concerning technical patterns that suggest further price deterioration is likely. For these reasons **Short Shots** can also be a great source of ideas for investors interested in short-selling candidates.



David P. Nicoski, CMT  
952-922-7502  
dave@vermilioncap.com

Shelley. Moen, CMT  
952-922-7504  
shelley@vermilioncap.com

Joe W. Jasper, CFA  
952-922-7501  
joe@vermilioncap.com

John M. Betz, CMT  
952-922-7506  
john@vermilioncap.com

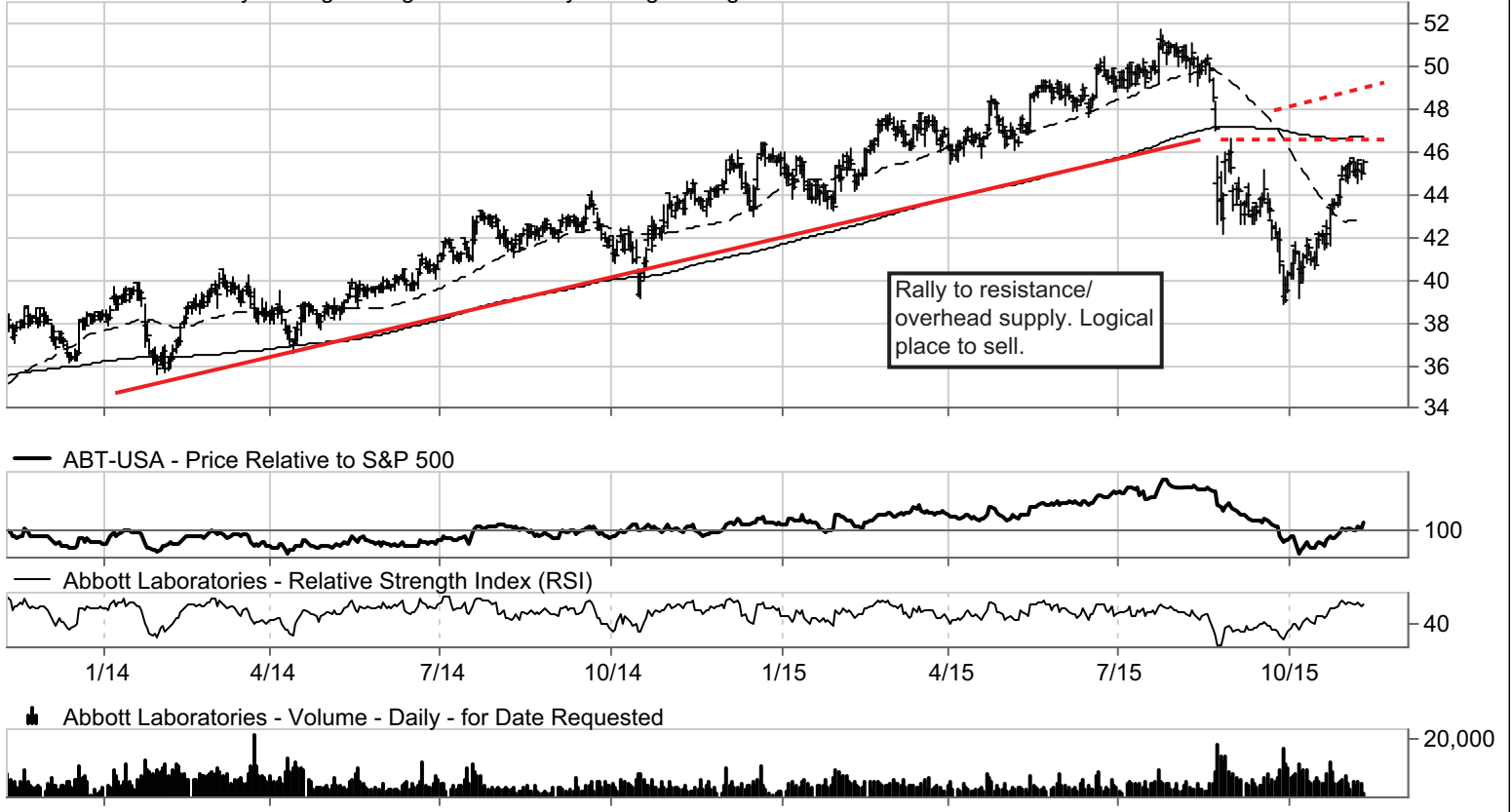
**ABT-USA**

Abbott Laboratories \$45.56

Price Chg: \$0.52 % Chg: 1.14 Avg Vol: 5,730,928 Yield: 2.13 % MktCap: \$67,970.2 MM 2013 P/E: 22.67x 2014 P/E:19.98x  
 % Chg: 19.54% US dollars

Engages in the discovery, development, manufacture and sale of health

Price — 50 Day Moving Average — 200 Day Moving Average



**ACLS-USA**

Axcelis Technologies, Inc. \$2.45

Price Chg: \$0.11 % Chg: 4.70 Avg Vol: 578,295 Yield: 0 % MktCap: \$283.5 MM  
 % Chg: 3.38%

Manufactures semiconductor equipment

2013 P/E: x 2014 P/E:x

US dollars

Price — 50 Day Moving Average — 200 Day Moving Average



**ADM-USA**

Archer-Daniels-Midland Company \$40.79

Price Chg: \$-0.74 % Chg: -1.77 Avg Vol: 3,578,029 Yield: 2.7 % MktCap: \$24,338.0 MM  
% Chg: -1.57%

Procures, transports, stores, processes, and merchandises agricultural

2013 P/E: 17.5x 2014 P/E:12.75x

US dollars

**Food Products**

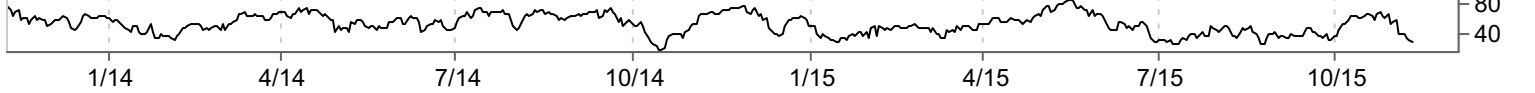
Price -- 50 Day Moving Average — 200 Day Moving Average



ADM-USA - Price Relative to S&P 500



Archer-Daniels-Midland Company - Relative Strength Index (RSI)



Archer-Daniels-Midland Company - Volume - Daily - for Date Requested



**AKAM-USA**

Akamai Technologies, Inc. \$61.70

Price Chg: \$-0.13 % Chg: -0.21 Avg Vol: 1,832,178 Yield: 0 % MktCap: \$10,978.8 MM  
% Chg: 36.29%

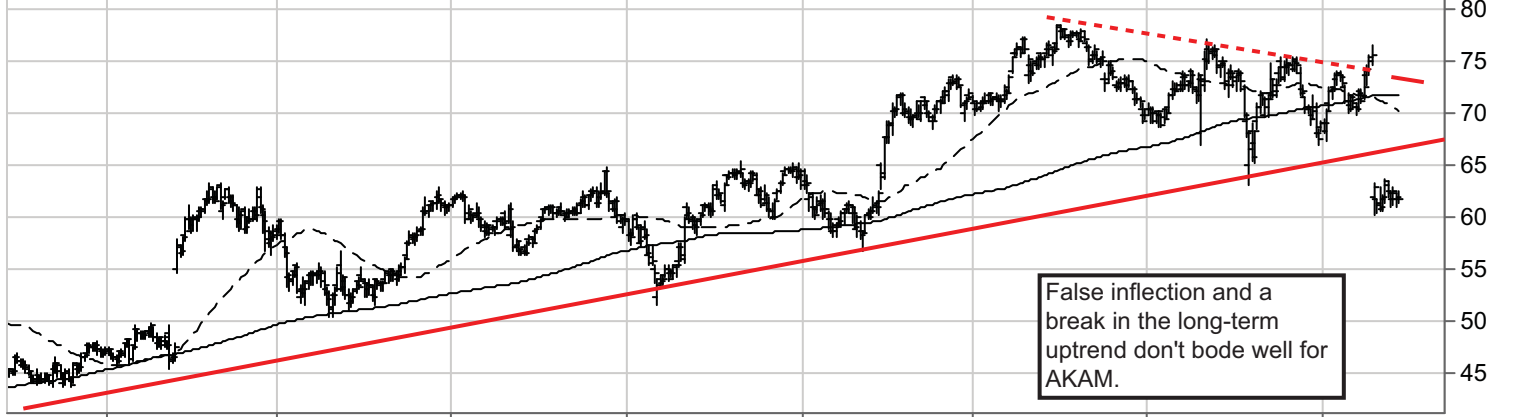
Provides cloud services for delivering, optimizing and securing online

2013 P/E: 30.54x 2014 P/E:24.88x

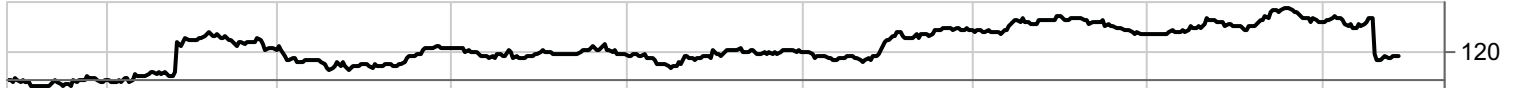
US dollars

**Internet Software & Services**

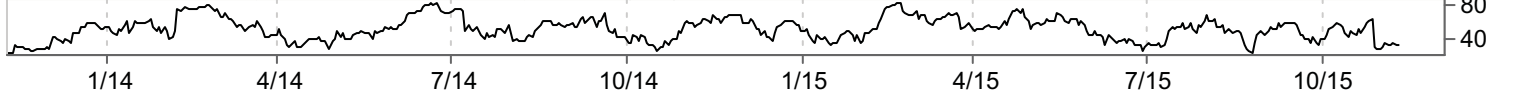
Price -- 50 Day Moving Average — 200 Day Moving Average



AKAM-USA - Price Relative to S&P 500



Akamai Technologies, Inc. - Relative Strength Index (RSI)



Akamai Technologies, Inc. - Volume - Daily - for Date Requested



# ALB-USA

Albemarle Corporation \$49.59

Price Chg: \$-0.33 % Chg: -0.66 Avg Vol: 1,119,296 Yield: 2.32 % MktCap: \$5,564.1 MM 2013 P/E: 12.21x 2014 P/E:11.81x % Chg: -26.36%

# Chemicals

Manufactures and markets specialty polymers, chemicals and related pro

US dollars

Price 50 Day Moving Average 200 Day Moving Average



# ATHM-USA

Autohome, Inc. Sponsored ADR Class A \$31.34

Price Chg: \$-0.79 % Chg: -2.46 Avg Vol: 823,077 Yield: 0 % MktCap: \$1,549.9 MM 2013 P/E: 40.7x 2014 P/E:29.29x % Chg: 4.22%

Operates and maintain websites for automobile and digital device infor

US dollars

Price 50 Day Moving Average 200 Day Moving Average



**ATML-USA**

Atmel Corporation \$7.52

Price Chg: \$-0.14 % Chg: -1.83 Avg Vol: 5,712,725 Yield: 2.09 % MktCap: \$3,160.7 MM 2013 P/E: 27.85x 2014 P/E:19.28x  
 % Chg: 5.32% US dollars

Price -- 50 Day Moving Average — 200 Day Moving Average

**Semiconductors & Semiconductor Equipment**

Manufactures advanced semiconductors and electronic circuits



**CAKE-USA**

Cheesecake Factory Incorporated \$46.90

Price Chg: \$-0.14 % Chg: -0.30 Avg Vol: 672,357 Yield: 1.7 % MktCap: \$2,306.9 MM 2013 P/E: 22.33x 2014 P/E:23.81x  
 % Chg: -2.62% US dollars

Price -- 50 Day Moving Average — 200 Day Moving Average

**Hotels Restaurants & Leisure**

Operates full-service, casual dining restaurants



### CERN-USA

Cerner Corporation \$59.29

Price Chg: \$-0.09 % Chg: -0.15 Avg Vol: 1,759,074 Yield: 0 % MktCap: \$20,283.4 MM

% Chg: 3.94%

### Health Care Technology

Provides healthcare information technology solutions, healthcare device

2013 P/E: 42.05x 2014 P/E:35.93x

US dollars

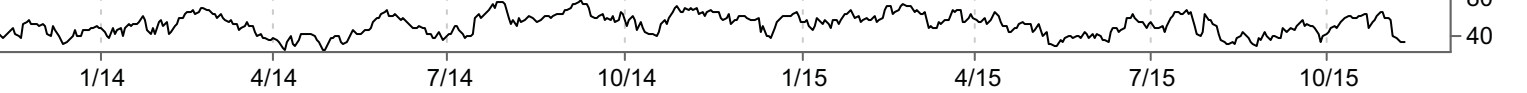
Price -- 50 Day Moving Average — 200 Day Moving Average



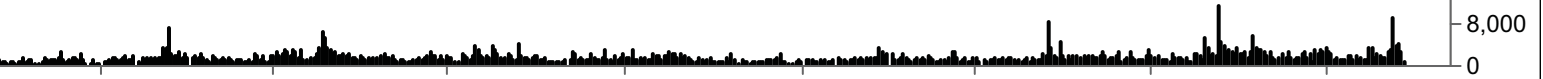
CERN-USA - Price Relative to S&P 500



Cerner Corporation - Relative Strength Index (RSI)



Cerner Corporation - Volume - Daily - for Date Requested



### CHRW-USA

C.H. Robinson Worldwide, Inc. \$68.69

Price Chg: \$0.87 % Chg: 1.28 Avg Vol: 1,624,776 Yield: 2.24 % MktCap: \$9,946.4 MM

% Chg: 15.14%

### Air Freight & Logistics

Provides multimodal transportation services and logistics solutions

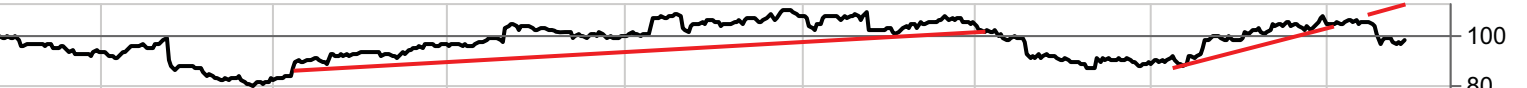
2013 P/E: 25.92x 2014 P/E:22.52x

US dollars

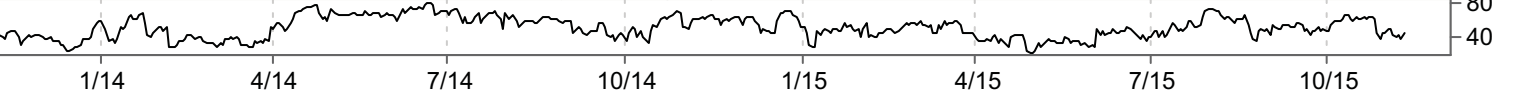
Price -- 50 Day Moving Average — 200 Day Moving Average



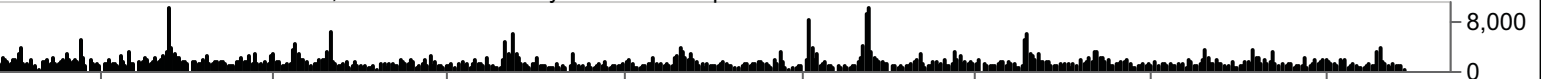
CHRW-USA - Price Relative to S&P 500



C.H. Robinson Worldwide, Inc. - Relative Strength Index (RSI)



C.H. Robinson Worldwide, Inc. - Volume - Daily - for Date Requested



**CMC-USA**

Commercial Metals Company \$14.54

Price Chg: \$0.13 % Chg: 0.94 Avg Vol: 1,005,222 Yield: 3.33 % MktCap: \$1,691.3 MM

% Chg: -23.67%

**Metals & Mining**

Manufactures and distributes steel reinforcing products

2013 P/E: 22.02x 2014 P/E:16.9x

US dollars

Price -- 50 Day Moving Average — 200 Day Moving Average



**CNC-USA**

Centene Corporation \$60.76

Price Chg: \$-0.32 % Chg: -0.52 Avg Vol: 1,421,322 Yield: 0 % MktCap: \$7,242.8 MM

% Chg: 113.94%

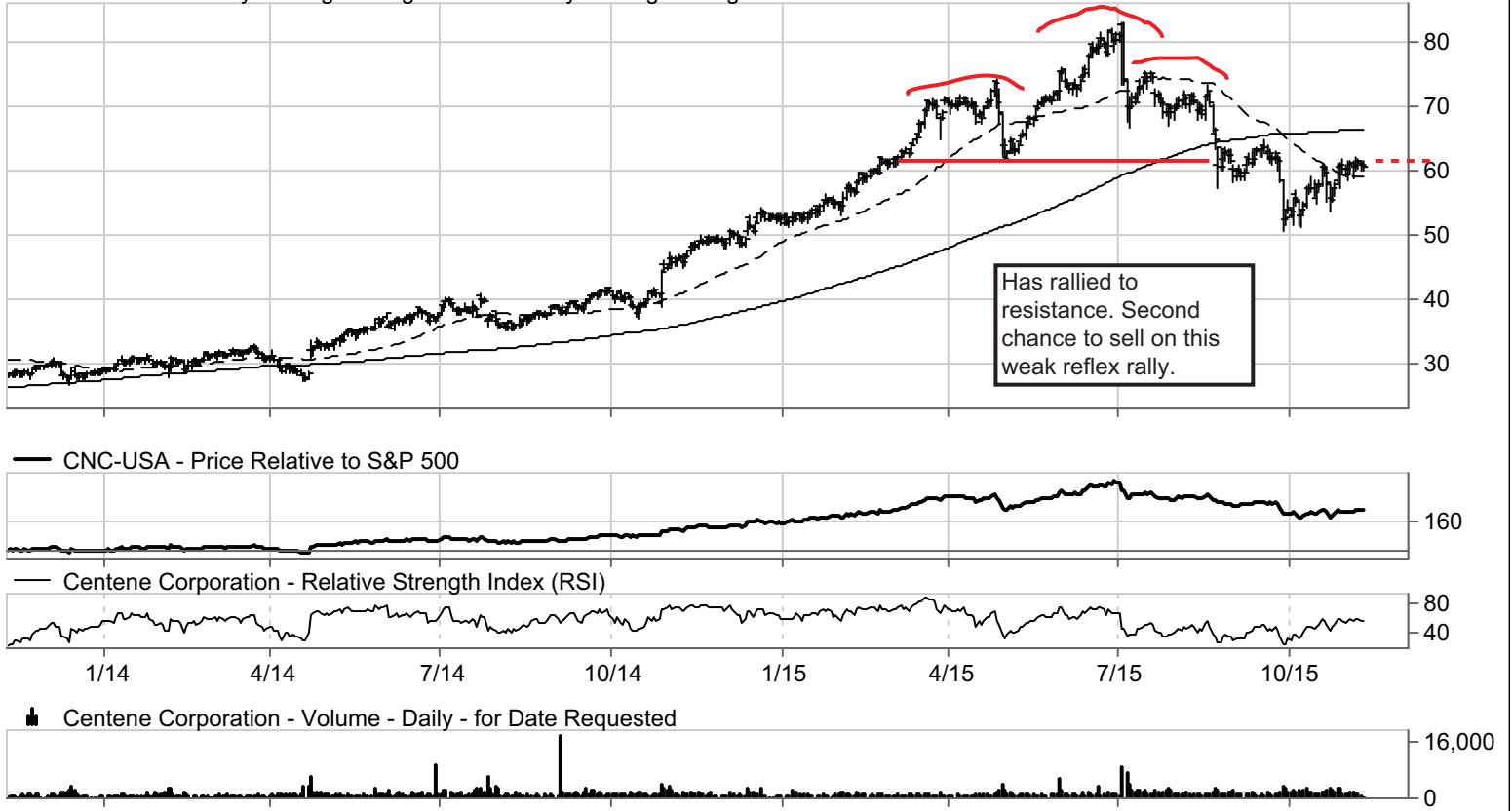
**Health Care Providers & Services**

Operates as a multi-line healthcare enterprise

2013 P/E: 42.34x 2014 P/E:27.31x

US dollars

Price -- 50 Day Moving Average — 200 Day Moving Average



### CVS-USA

CVS Health Corporation \$97.76

Price Chg: \$-0.23 % Chg: -0.23 Avg Vol: 4,547,338 Yield: 1.43 % MktCap: \$108,251.6 MM 2013 P/E: 24.44x 2014 P/E:21.77x  
% Chg: 53.28%

US dollars

Price 50 Day Moving Average 200 Day Moving Average

### Food & Staples Retailing

Operates as an integrated pharmacy health care provider



### DPZ-USA

Domino's Pizza, Inc. \$103.05

Price Chg: \$0.01 % Chg: 0.01 Avg Vol: 454,933 Yield: 1.2 % MktCap: \$5,631.4 MM  
% Chg: 52.44%

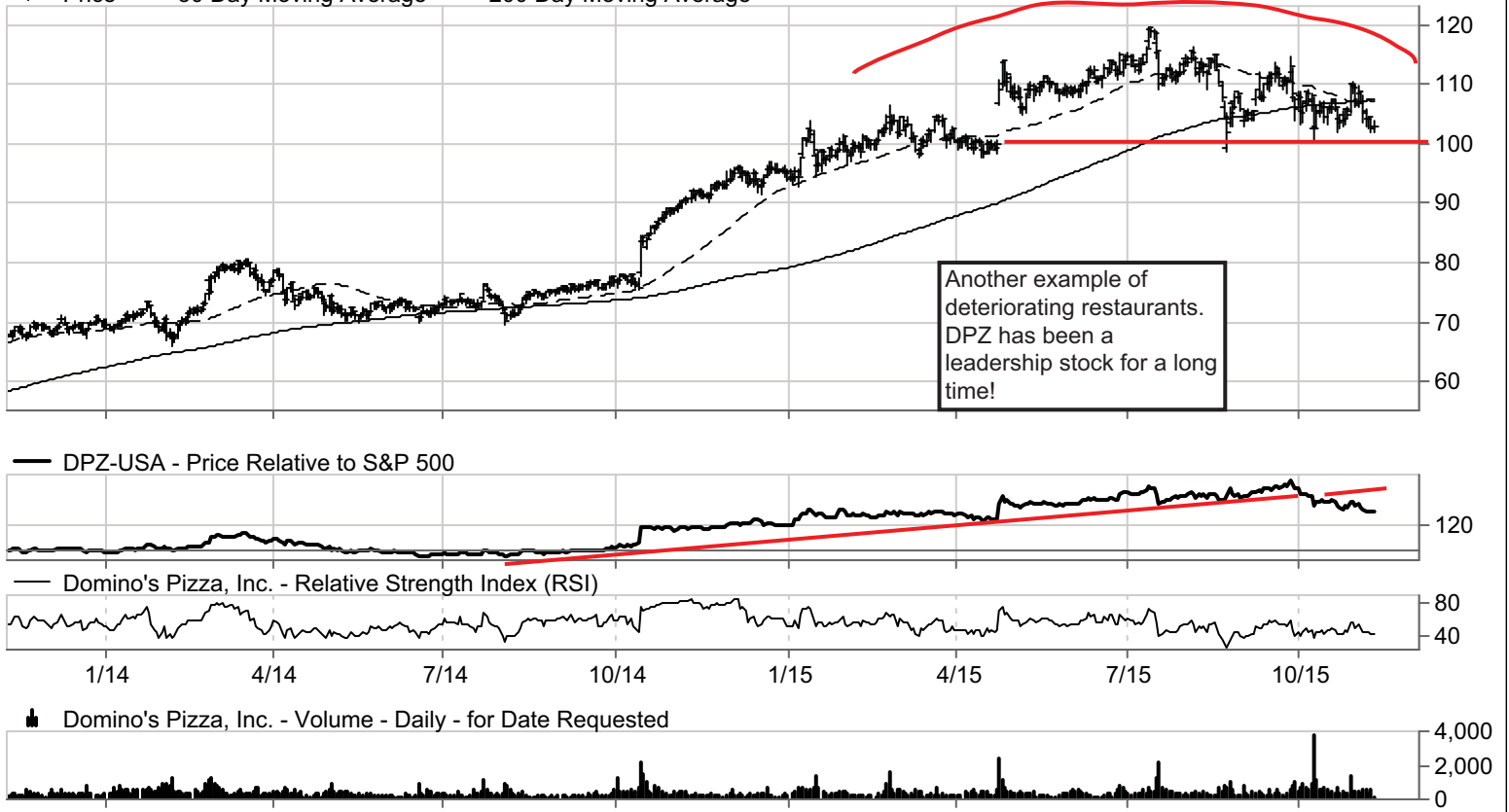
US dollars

Price 50 Day Moving Average 200 Day Moving Average

### Hotels Restaurants & Leisure

Operates specialty restaurants

2013 P/E: 42.06x 2014 P/E:35.53x





### EV-USA

Eaton Vance Corp. \$36.67

Price Chg: \$-0.24 % Chg: -0.65 Avg Vol: 773,372 Yield: 2.87 % MktCap: \$4,277.3 MM

% Chg: -12.98%

### Capital Markets

Provides investment management and consulting services

2013 P/E: 17.63x 2014 P/E: 14.79x

US dollars

Price 50 Day Moving Average 200 Day Moving Average



### FFIV-USA

F5 Networks, Inc. \$107.33

Price Chg: \$-2.17 % Chg: -1.98 Avg Vol: 1,169,453 Yield: 0 % MktCap: \$7,553.7 MM

% Chg: 30.86%

### Communications Equipment

Manufactures Internet-based software

2013 P/E: 23.38x 2014 P/E: 19.77x

US dollars

Price 50 Day Moving Average 200 Day Moving Average



**FII-USA**

**Capital Markets**

Federated Investors, Inc. Class B \$31.50

Provides investment management products and related financial services

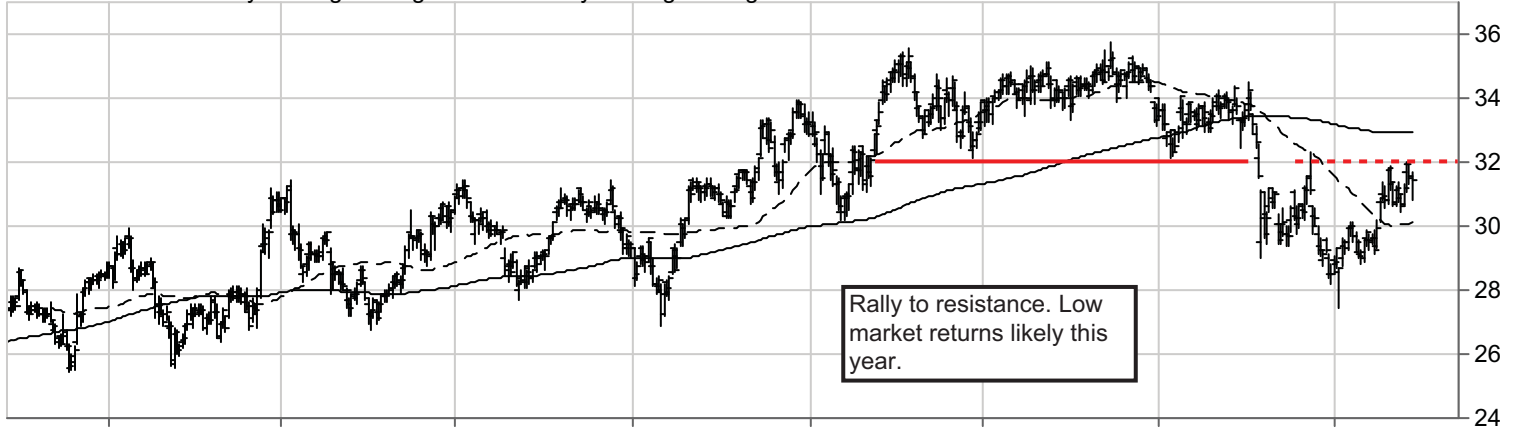
Price Chg: \$-0.11 % Chg: -0.35 Avg Vol: 574,634 Yield: 3.16 % MktCap: \$3,279.5 MM

2013 P/E: 20.32x 2014 P/E:22.18x

% Chg: 14.80%

US dollars

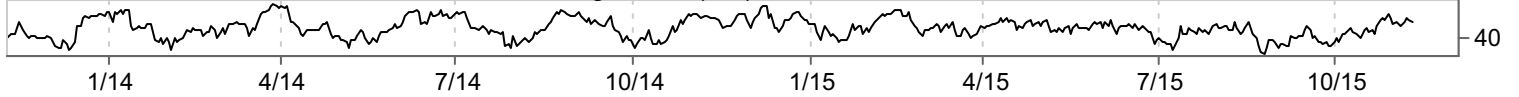
Price — 50 Day Moving Average — 200 Day Moving Average



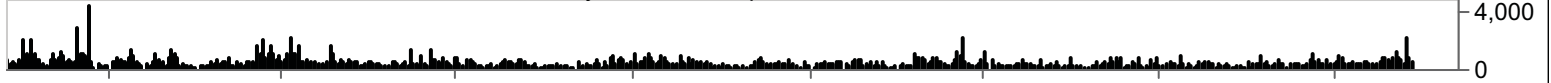
— FII-USA - Price Relative to S&P 500



— Federated Investors, Inc. Class B - Relative Strength Index (RSI)



▬ Federated Investors, Inc. Class B - Volume - Daily - for Date Requested



**FOXA-USA**

**Media**

Twenty-First Century Fox, Inc. Class A \$29.93

Engages in television broadcasting and movie production

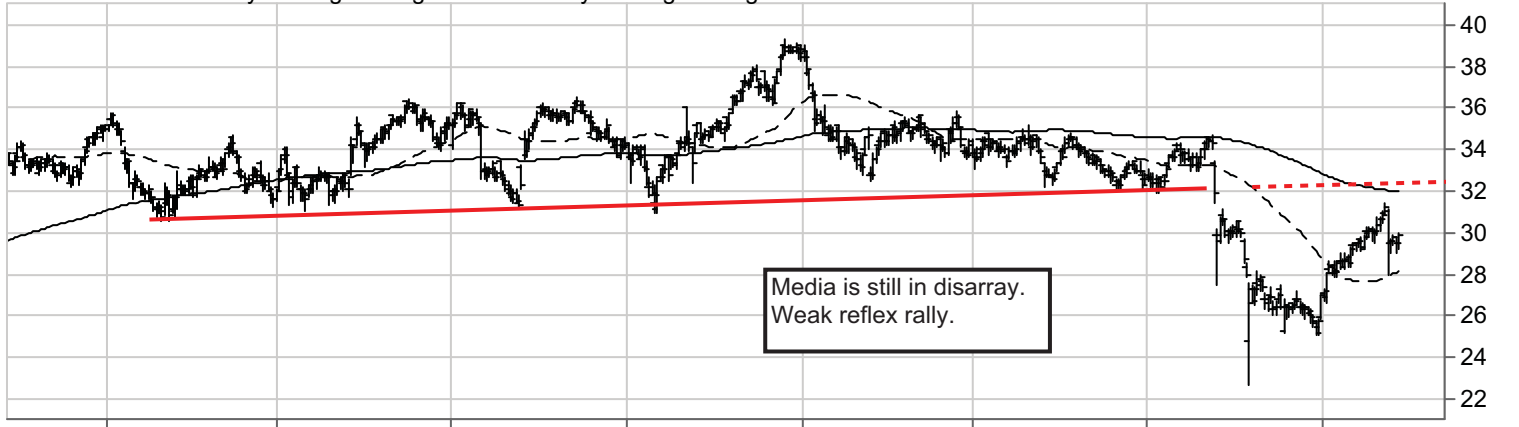
Price Chg: \$0.44 % Chg: 1.49 Avg Vol: 13,357,006 Yield: 1.02 % MktCap: \$58,940.3 MM

2013 P/E: 22.01x 2014 P/E:19.31x

% Chg: -11.55%

US dollars

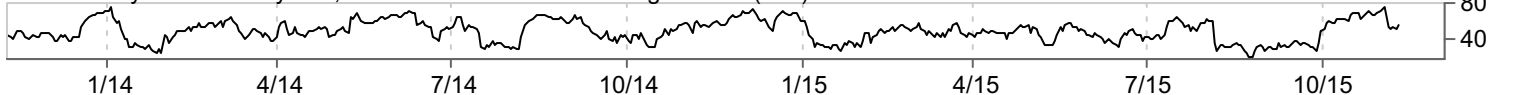
Price — 50 Day Moving Average — 200 Day Moving Average



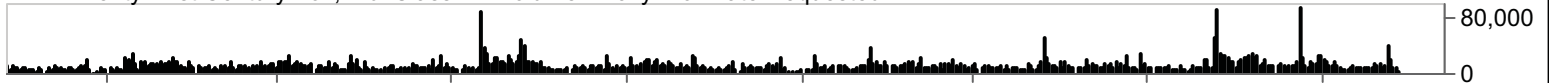
— FOXA-USA - Price Relative to S&P 500



— Twenty-First Century Fox, Inc. Class A - Relative Strength Index (RSI)



▬ Twenty-First Century Fox, Inc. Class A - Volume - Daily - for Date Requested



### FTNT-USA

Fortinet, Inc. \$32.92

Price Chg: \$-0.52 % Chg: -1.56 Avg Vol: 1,938,154 Yield: 0 % MktCap: \$5,634.3 MM

2013 P/E: 68.58x 2014 P/E:68.58x

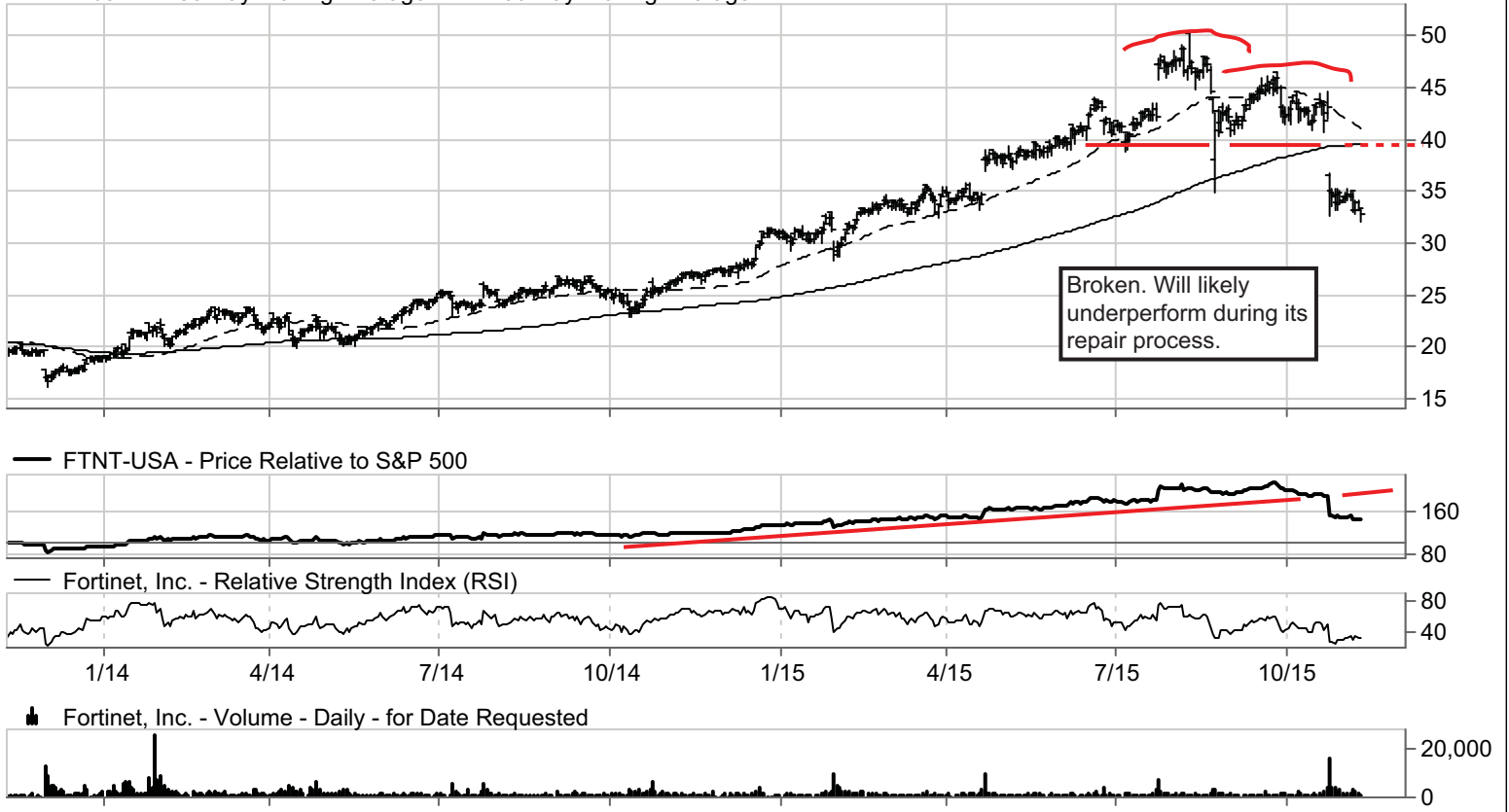
% Chg: 69.34%

### Software

Provides threat management and network security solutions

US dollars

Price -- 50 Day Moving Average — 200 Day Moving Average



### GIII-USA

G-III Apparel Group, Ltd. \$46.21

Price Chg: \$-1.13 % Chg: -2.39 Avg Vol: 424,498 Yield: 0 % MktCap: \$2,089.6 MM

2013 P/E: 24.71x 2014 P/E:20.36x

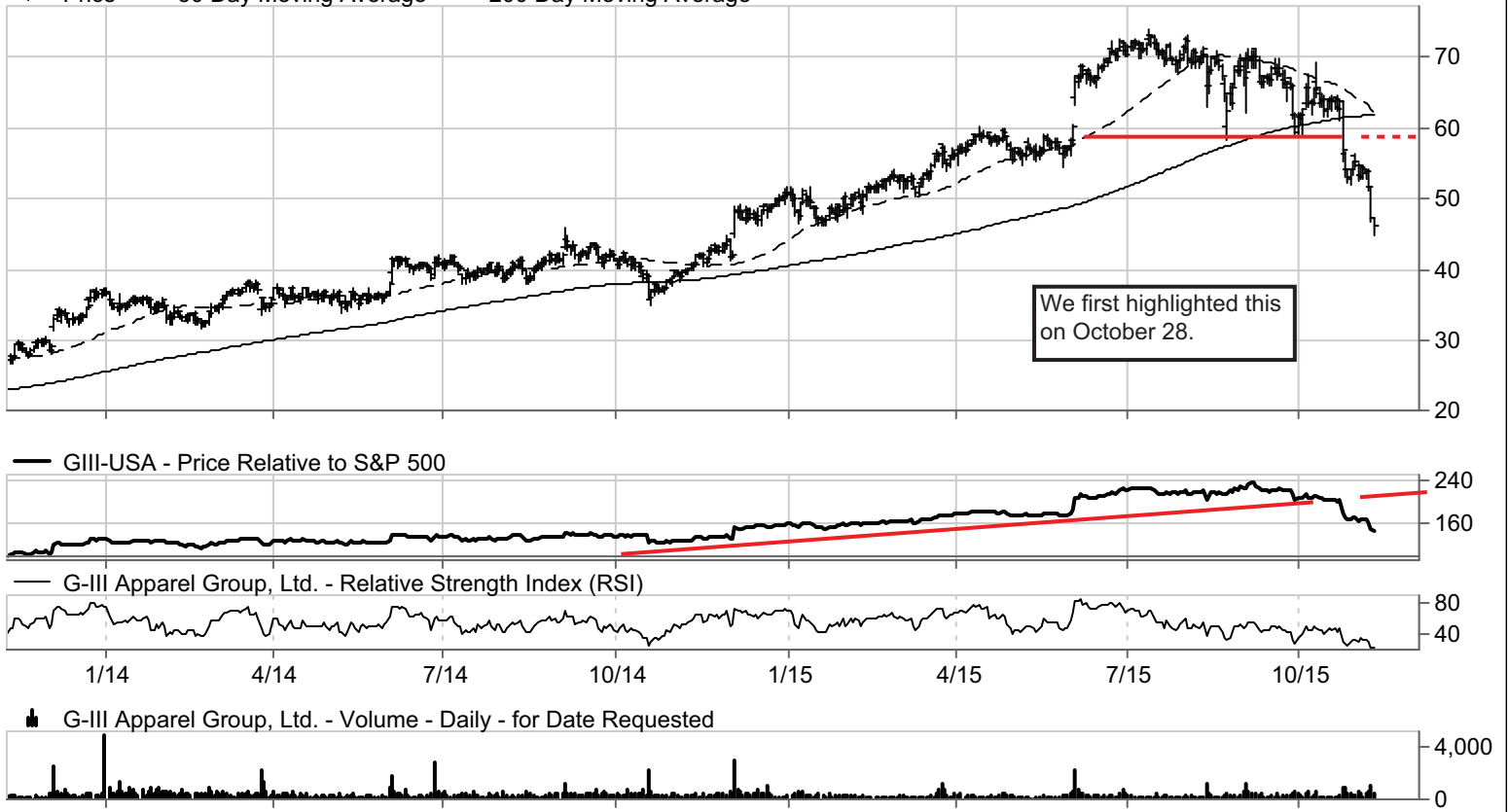
% Chg: 70.33%

### Textiles Apparel & Luxury Goods

Manufactures and distributes outerwear and sportswear

US dollars

Price -- 50 Day Moving Average — 200 Day Moving Average



### HUB.B-USA

Hubbell Incorporated Class B \$92.23

Price Chg: \$-2.35 % Chg: -2.48 Avg Vol: 278,853 Yield: 2.66 % MktCap: \$5,338.5 MM

% Chg: -13.24%

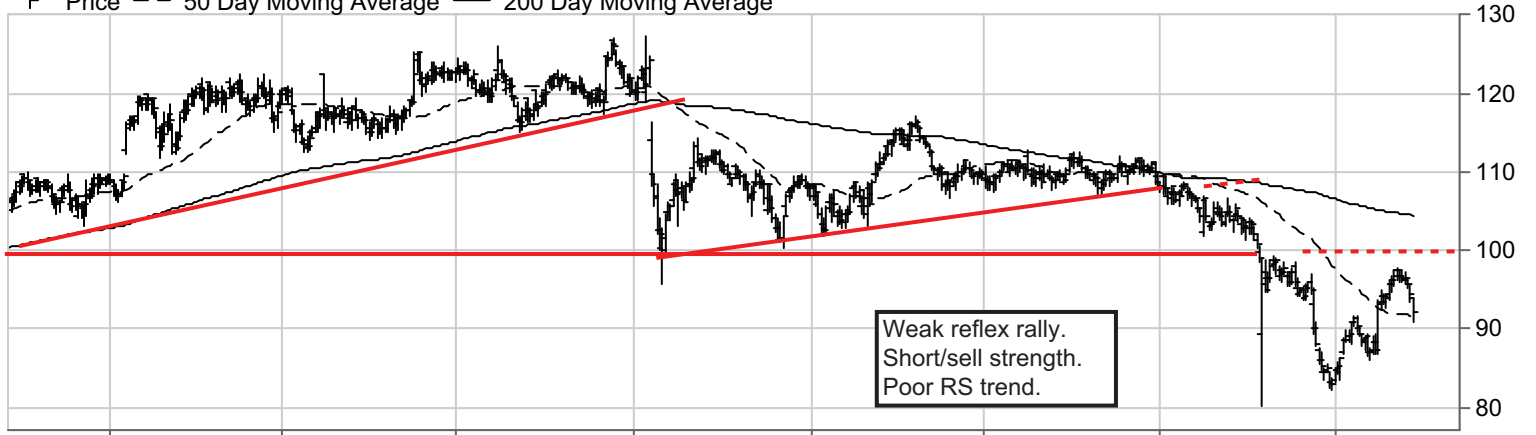
### Electrical Equipment

Manufactures high quality electrical and electronic products

2013 P/E: 16.86x 2014 P/E:16.83x

US dollars

Price 50 Day Moving Average 200 Day Moving Average



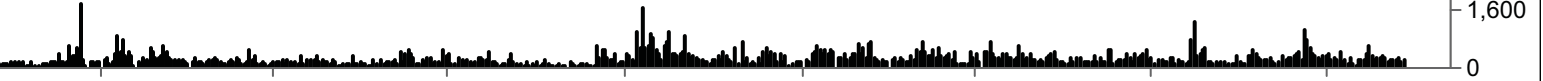
HUB.B-USA - Price Relative to S&P 500



Hubbell Incorporated Class B - Relative Strength Index (RSI)



Hubbell Incorporated Class B - Volume - Daily - for Date Requested



### JACK-USA

Jack in the Box Inc. \$72.47

Price Chg: \$-0.46 % Chg: -0.63 Avg Vol: 507,152 Yield: 1.65 % MktCap: \$2,650.8 MM

% Chg: 71.40%

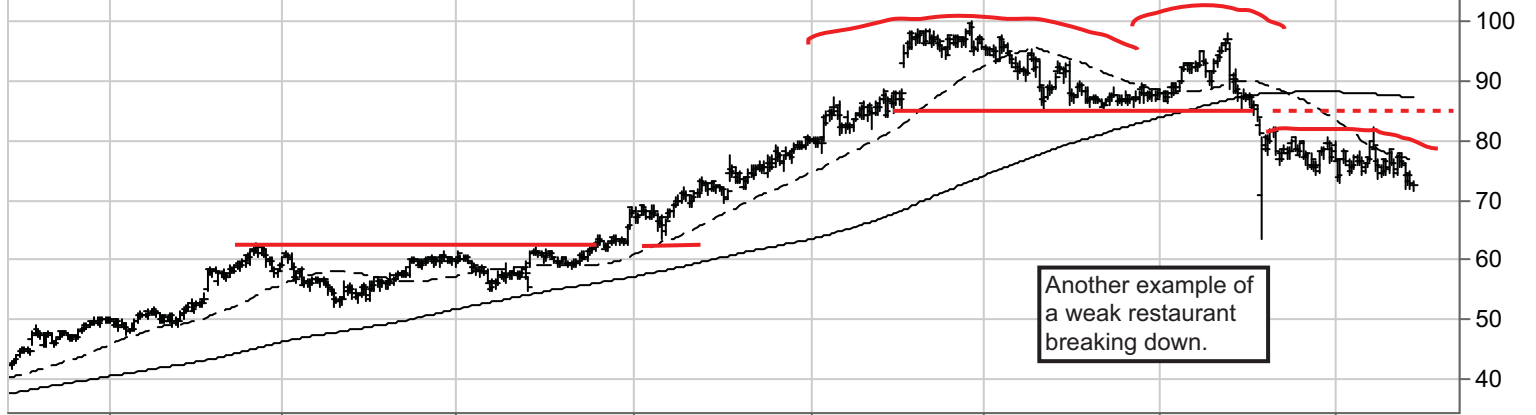
### Hotels Restaurants & Leisure

Operates and franchises fast food restaurants

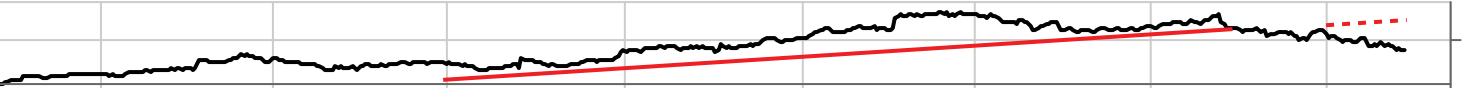
2013 P/E: 39.82x 2014 P/E:29.58x

US dollars

Price 50 Day Moving Average 200 Day Moving Average



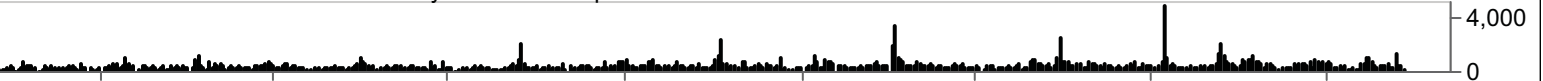
JACK-USA - Price Relative to S&P 500



Jack in the Box Inc. - Relative Strength Index (RSI)



Jack in the Box Inc. - Volume - Daily - for Date Requested



**JNS-USA**

Janus Capital Group Inc. \$15.72

Price Chg: \$0.02 % Chg: 0.13 Avg Vol: 3,246,468 Yield: 2.29 % MktCap: \$2,904.2 MM

2013 P/E: 25.35x 2014 P/E:19.41x

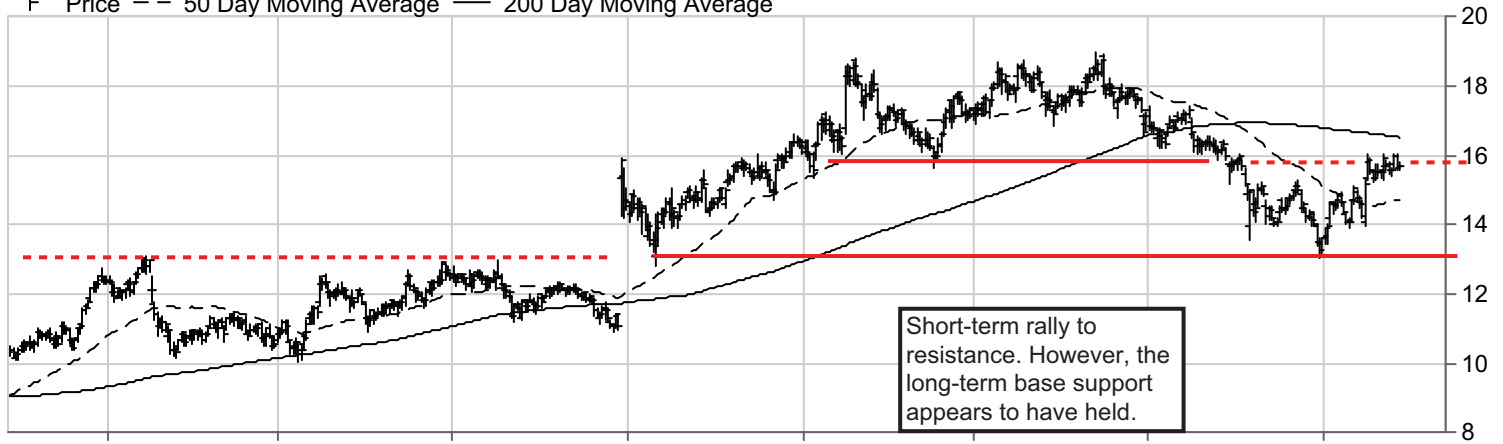
% Chg: 52.47%

US dollars

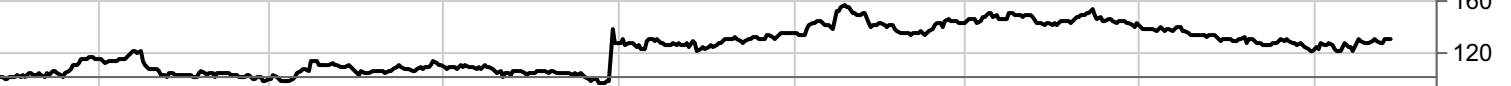
**Capital Markets**

Provides investment management and advisory services

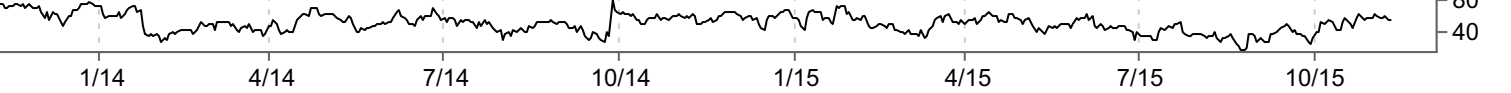
Price — 50 Day Moving Average — 200 Day Moving Average



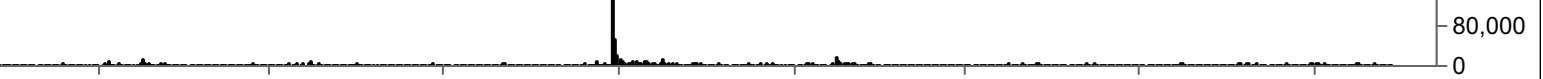
— JNS-USA - Price Relative to S&P 500



— Janus Capital Group Inc. - Relative Strength Index (RSI)



▮ Janus Capital Group Inc. - Volume - Daily - for Date Requested



**JOY-USA**

Joy Global Inc. \$16.56

Price Chg: \$-0.33 % Chg: -1.93 Avg Vol: 1,990,722 Yield: 4.74 % MktCap: \$1,614.6 MM

2013 P/E: 2.84x 2014 P/E:5.03x

% Chg: -71.25%

US dollars

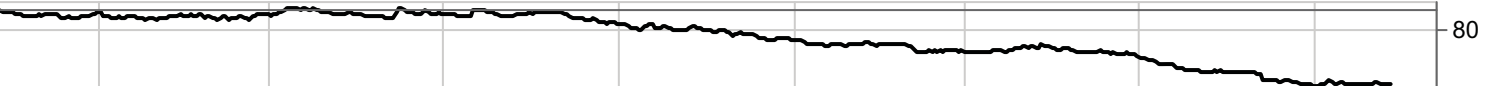
**Machinery**

Manufactures and services high productivity mining equipment

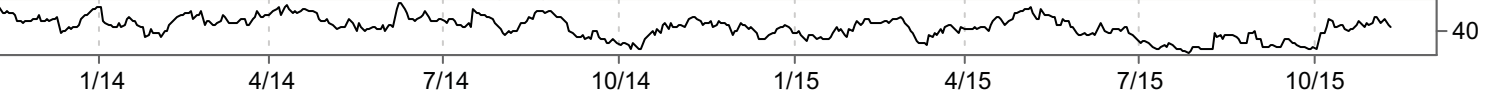
Price — 50 Day Moving Average — 200 Day Moving Average



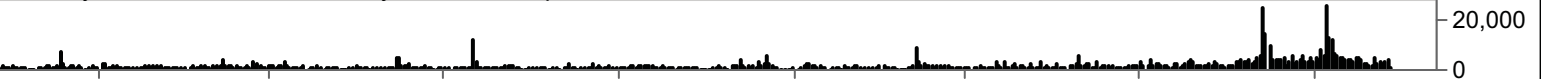
— JOY-USA - Price Relative to S&P 500



— Joy Global Inc. - Relative Strength Index (RSI)



▮ Joy Global Inc. - Volume - Daily - for Date Requested



### KBH-USA

KB Home \$13.18

Price Chg: \$0.41 % Chg: 3.21 Avg Vol: 3,791,514 Yield: 0.78 % MktCap: \$1,213.5 MM  
% Chg: -17.52%

### Household Durables

Constructs and sells single family homes as well as condominium comple

2013 P/E: 28.65x 2014 P/E:1.42x

US dollars

Price 50 Day Moving Average 200 Day Moving Average



### KEYS-USA

Keysight Technologies Inc \$30.85

Price Chg: \$-0.81 % Chg: -2.56 Avg Vol: 1,060,808 Yield: 0 % MktCap: \$5,228.2 MM  
% Chg: 9.20%

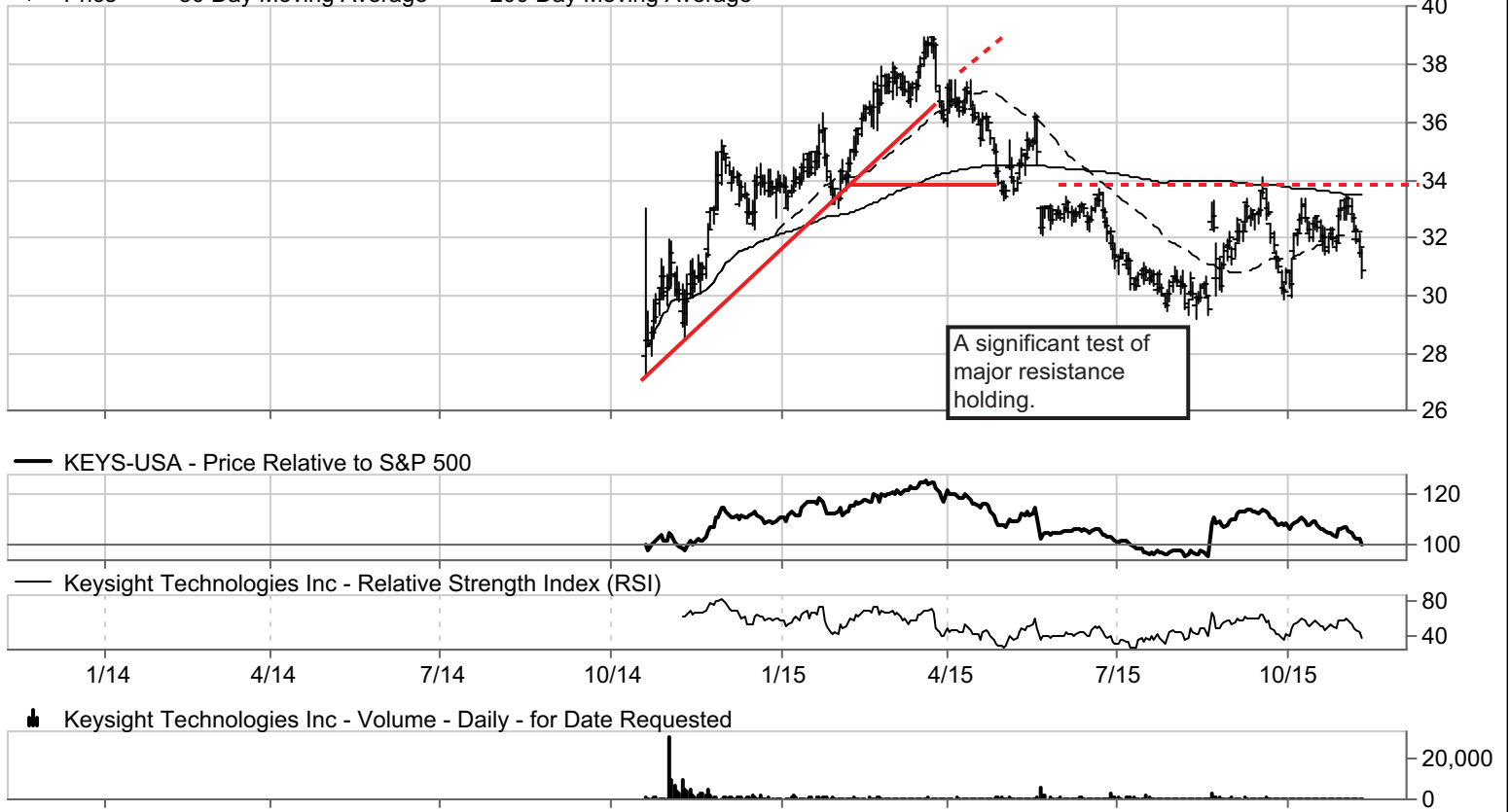
### Electronic Equipment Instruments & Components

Provides electronic measurement instruments and systems and related so

2013 P/E: x 2014 P/E:10.7x

US dollars

Price 50 Day Moving Average 200 Day Moving Average



### KRC-USA

Kilroy Realty Corporation \$63.77

Price Chg: \$0.94 % Chg: 1.50 Avg Vol: 518,292 Yield: 2.23 % MktCap: \$5,880.9 MM

% Chg: 25.24%

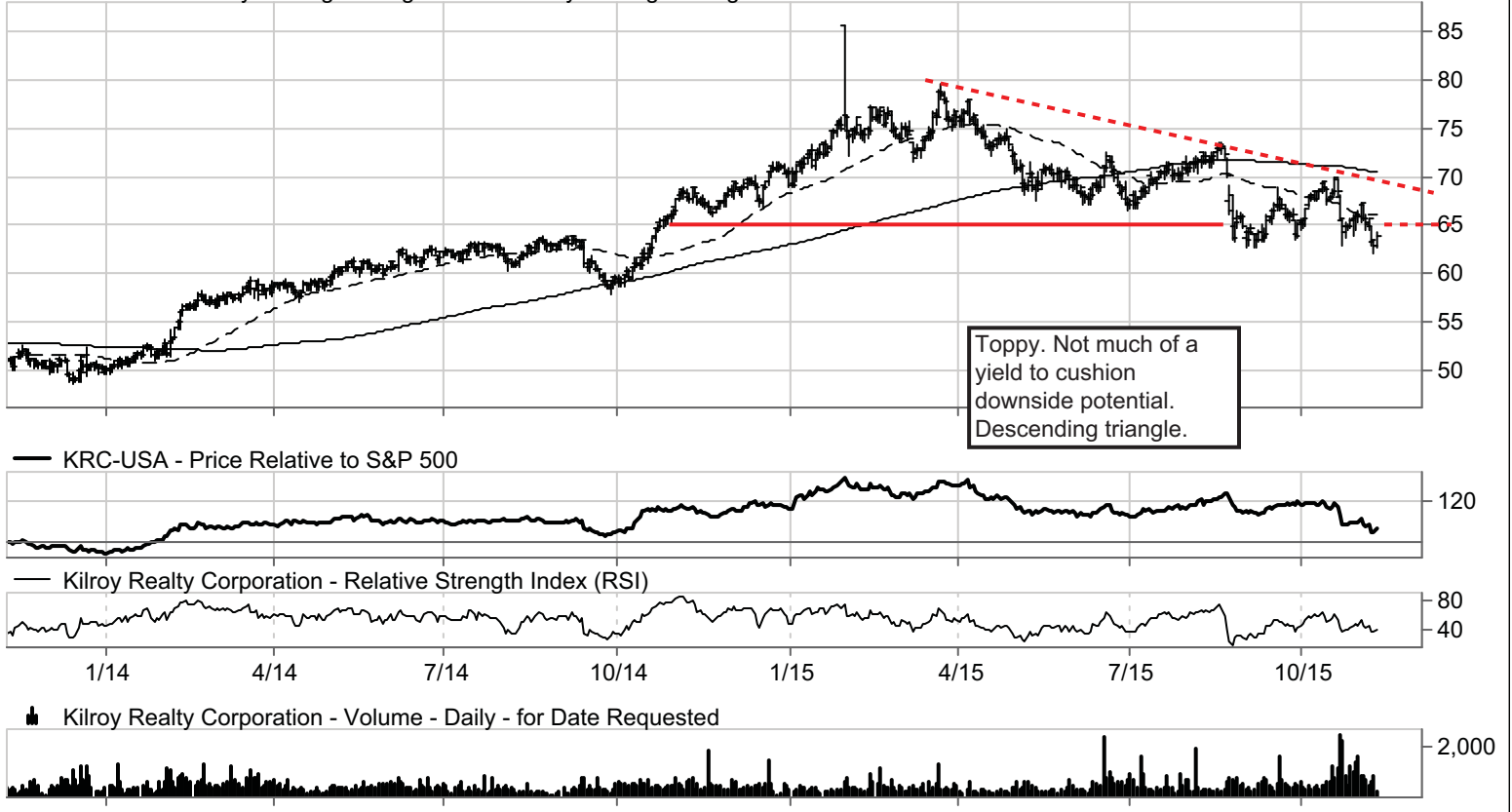
### Real Estate Investment Trusts (REITs)

Real estate investment trust

2013 P/E: 190.63x 2014 P/E:131.54x

US dollars

Price 50 Day Moving Average 200 Day Moving Average



### NCR-USA

NCR Corporation \$26.66

Price Chg: \$-0.30 % Chg: -1.09 Avg Vol: 2,100,944 Yield: 0 % MktCap: \$4,530.4 MM

% Chg: -27.01%

### Technology Hardware Storage & Peripherals

Provides products and services which enable businesses to connect, int

2013 P/E: 9.49x 2014 P/E:9.73x

US dollars

Price 50 Day Moving Average 200 Day Moving Average



### NTCT-USA

NetScout Systems, Inc. \$35.34

Price Chg: \$-0.32 % Chg: -0.90 Avg Vol: 490,183 Yield: 0 % MktCap: \$3,560.0 MM  
% Chg: 22.62%

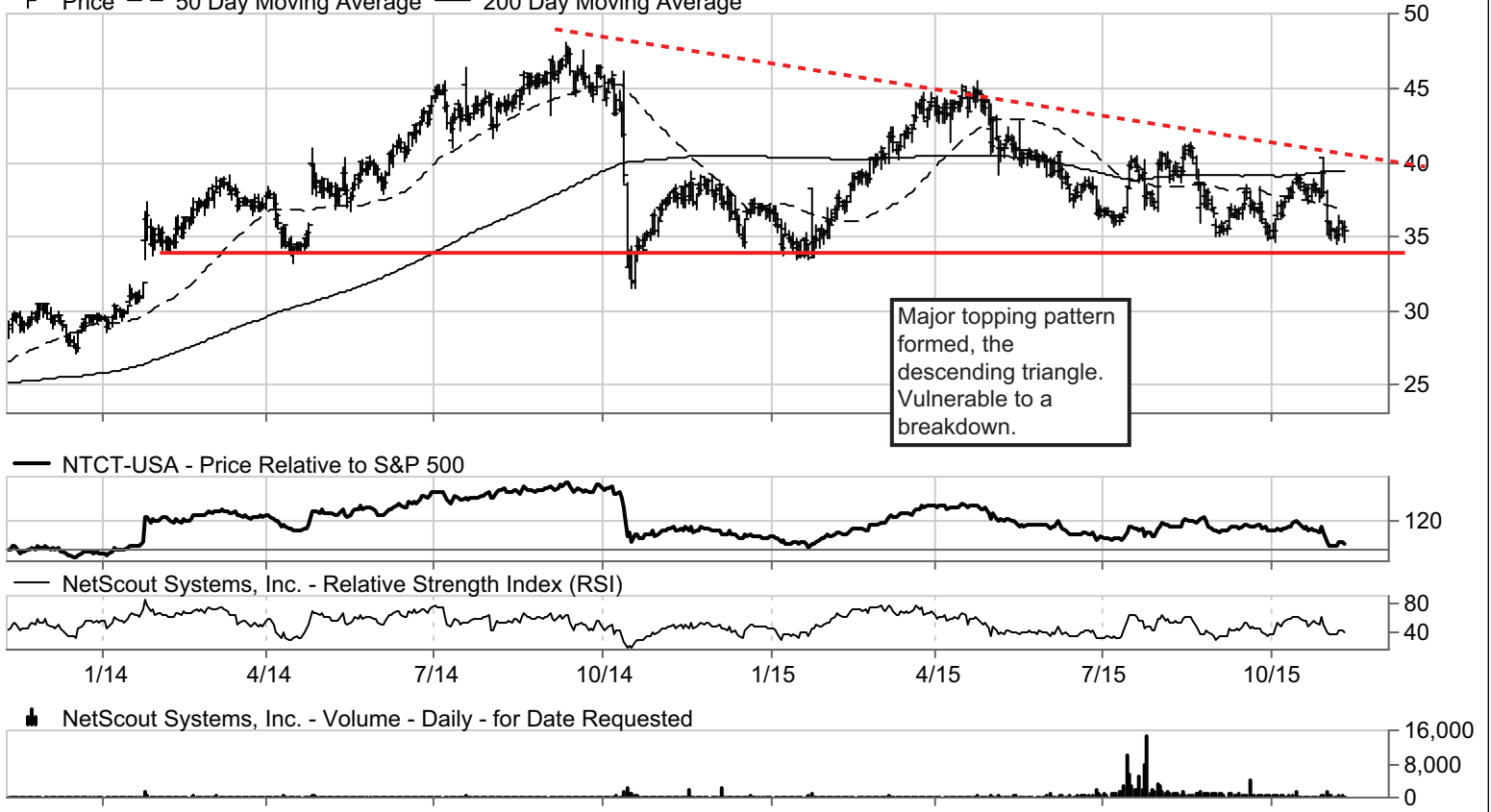
### Communications Equipment

Offers application and network performance management solutions to ent

2013 P/E: 23.1x 2014 P/E:17.41x

US dollars

Price 50 Day Moving Average 200 Day Moving Average



### PAY-USA

VeriFone Systems, Inc. \$29.67

Price Chg: \$-0.60 % Chg: -1.98 Avg Vol: 1,462,561 Yield: 0 % MktCap: \$3,410.5 MM  
% Chg: 26.58%

### IT Services

Manufactures and distributes electronic payment devices

2013 P/E: 20.6x 2014 P/E:19.65x

US dollars

Price 50 Day Moving Average 200 Day Moving Average





### PKG-USA

Packaging Corporation of America \$65.91

Price Chg: \$-0.57 % Chg: -0.86 Avg Vol: 950,935 Yield: 3.31 % MktCap: \$6,393.4 MM

% Chg: 8.87%

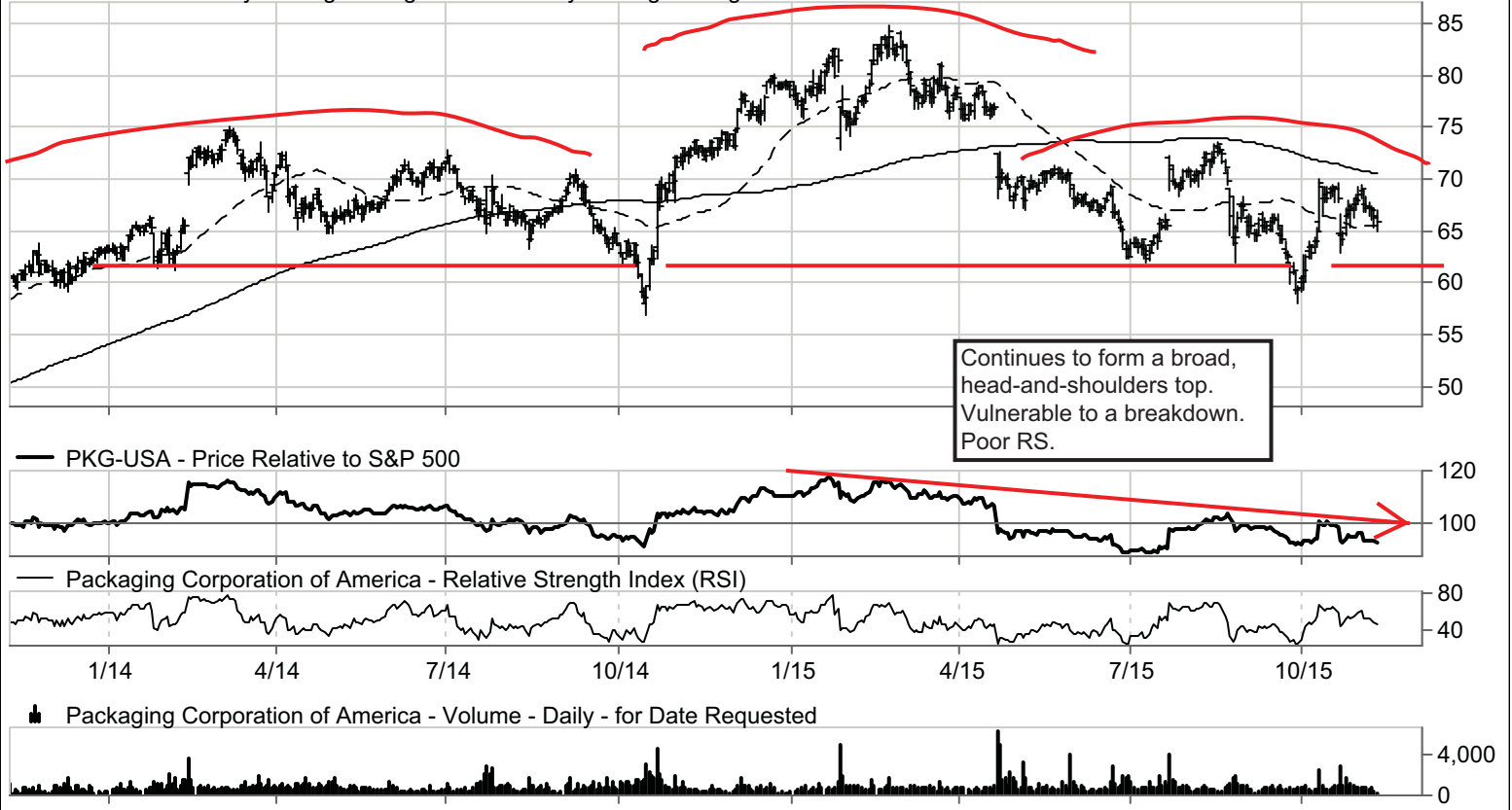
### Containers & Packaging

Manufactures containerboard and corrugated packaging products

2013 P/E: 20.09x 2014 P/E:14.14x

US dollars

Price -- 50 Day Moving Average — 200 Day Moving Average



### SCI-USA

Service Corporation International \$26.06

Price Chg: \$-0.53 % Chg: -1.99 Avg Vol: 1,252,341 Yield: 1.81 % MktCap: \$5,120.9 MM

% Chg: 47.73%

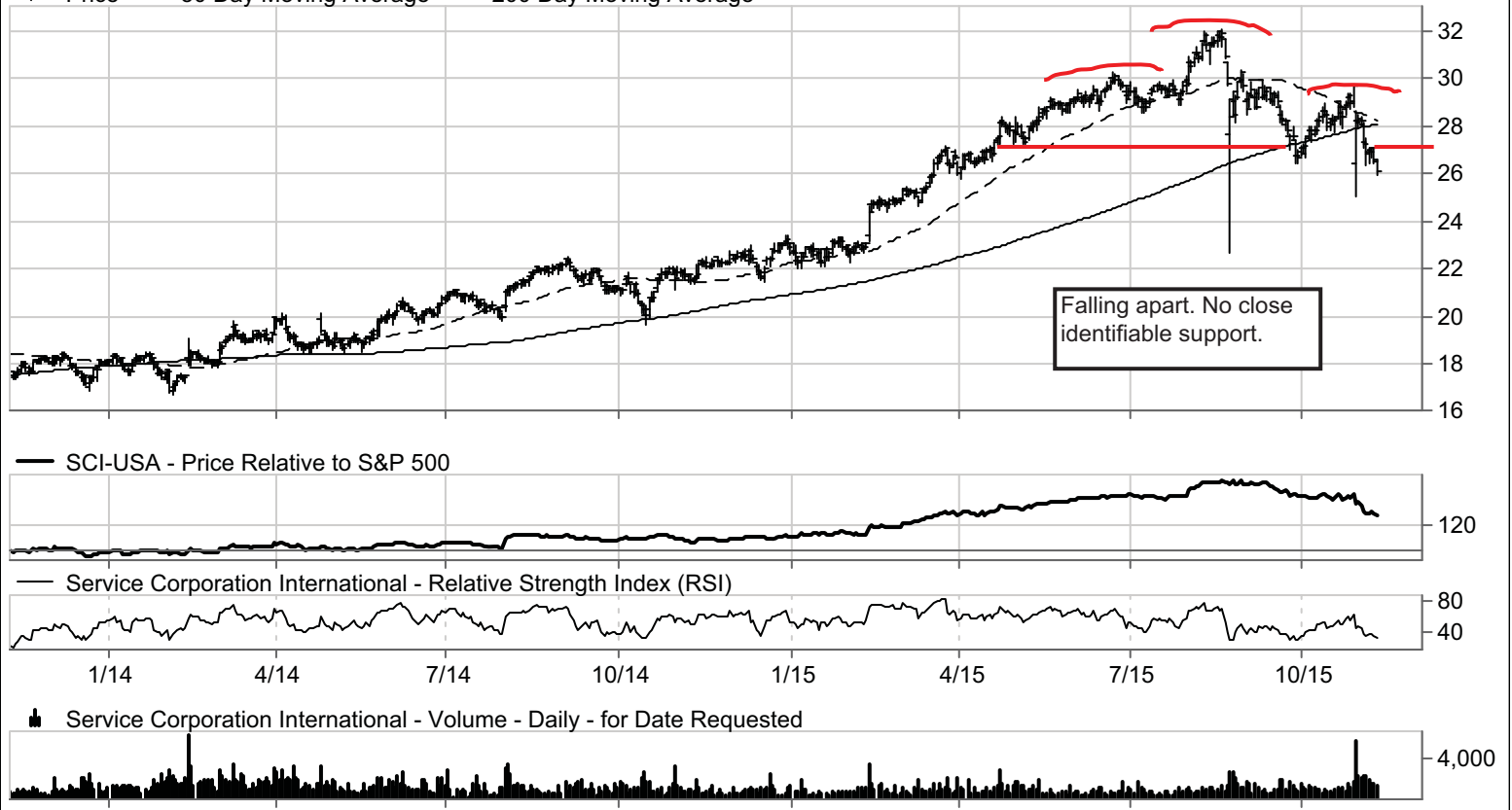
### Diversified Consumer Services

Owns and operates funeral homes and cemeteries

2013 P/E: 28.33x 2014 P/E:23.48x

US dollars

Price -- 50 Day Moving Average — 200 Day Moving Average



**STJ-USA**

St. Jude Medical, Inc. \$63.86

Develops, manufactures and distributes cardiovascular medical devices

Price Chg: \$0.23 % Chg: 0.36 Avg Vol: 1,832,420 Yield: 1.82 % MktCap: \$17,992.2 MM

2013 P/E: 16.98x 2014 P/E:15.28x

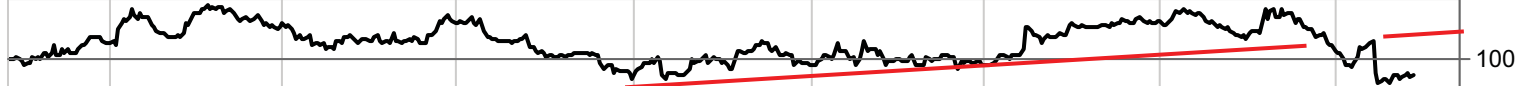
% Chg: 12.05%

US dollars

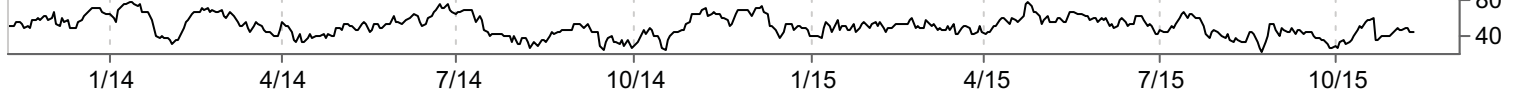
Price 50 Day Moving Average 200 Day Moving Average



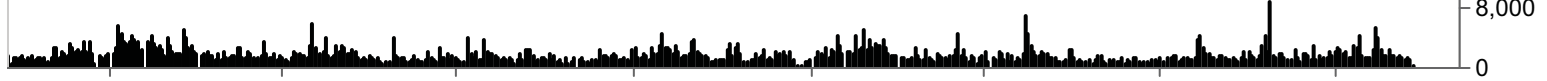
STJ-USA - Price Relative to S&P 500



St. Jude Medical, Inc. - Relative Strength Index (RSI)



St. Jude Medical, Inc. - Volume - Daily - for Date Requested



**STLD-USA**

Steel Dynamics, Inc. \$17.51

**Metals & Mining**

Manufactures carbon steel products

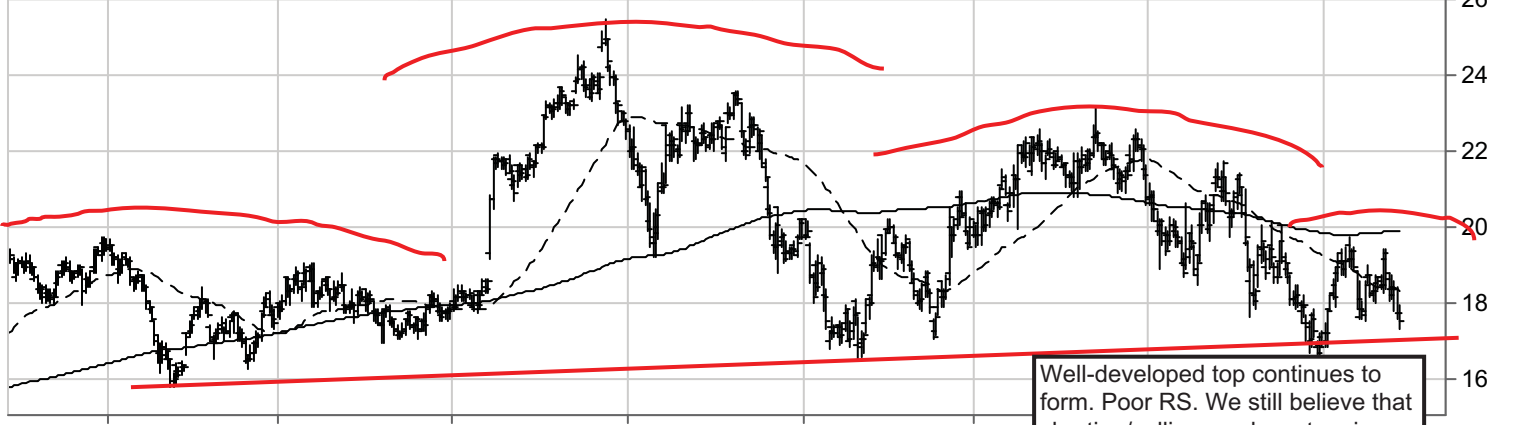
Price Chg: \$-0.22 % Chg: -1.24 Avg Vol: 3,056,810 Yield: 3.1 % MktCap: \$4,238.5 MM

2013 P/E: 21.1x 2014 P/E:12.97x

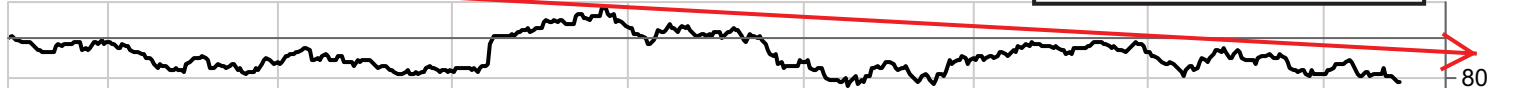
% Chg: -8.61%

US dollars

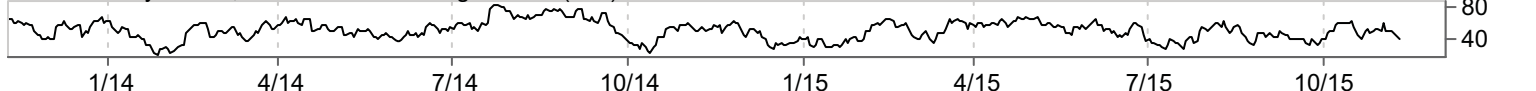
Price 50 Day Moving Average 200 Day Moving Average



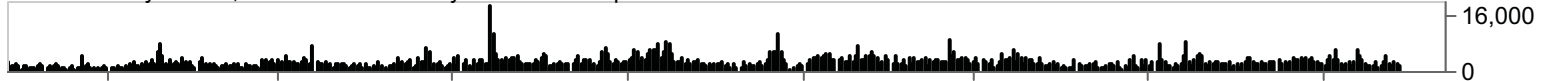
STLD-USA - Price Relative to S&P 500



Steel Dynamics, Inc. - Relative Strength Index (RSI)



Steel Dynamics, Inc. - Volume - Daily - for Date Requested



**TGT-USA**

Target Corporation \$77.08

Price Chg: \$0.85 % Chg: 1.11 Avg Vol: 5,032,092 Yield: 2.94 % MktCap: \$48,439.0 MM  
 % Chg: 18.38%

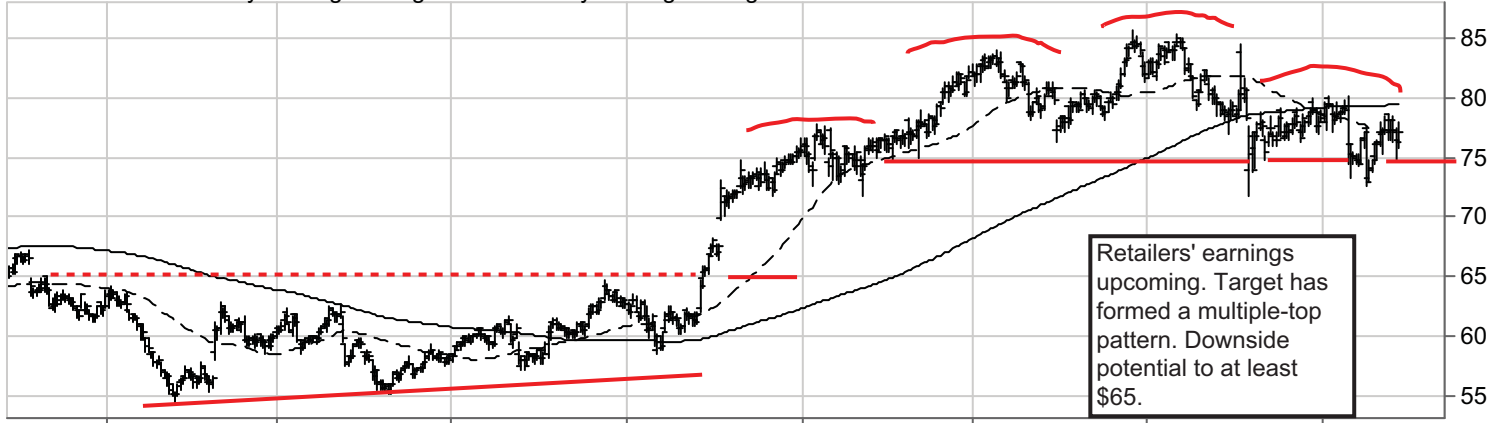
**Multiline Retail**

Operates department and discount stores

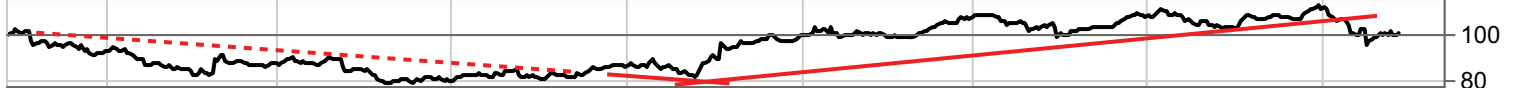
2013 P/E: 24.01x 2014 P/E: 18.05x

US dollars

Price -- 50 Day Moving Average — 200 Day Moving Average



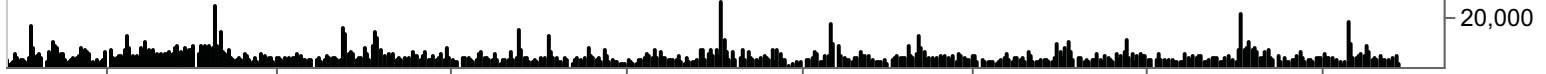
TGT-USA - Price Relative to S&P 500



Target Corporation - Relative Strength Index (RSI)



Target Corporation - Volume - Daily - for Date Requested



**TIME-USA**

Time Inc \$16.56

Price Chg: \$-0.53 % Chg: -3.10 Avg Vol: 1,197,304 Yield: 4.45 % MktCap: \$1,817.9 MM  
 % Chg: -20.58%

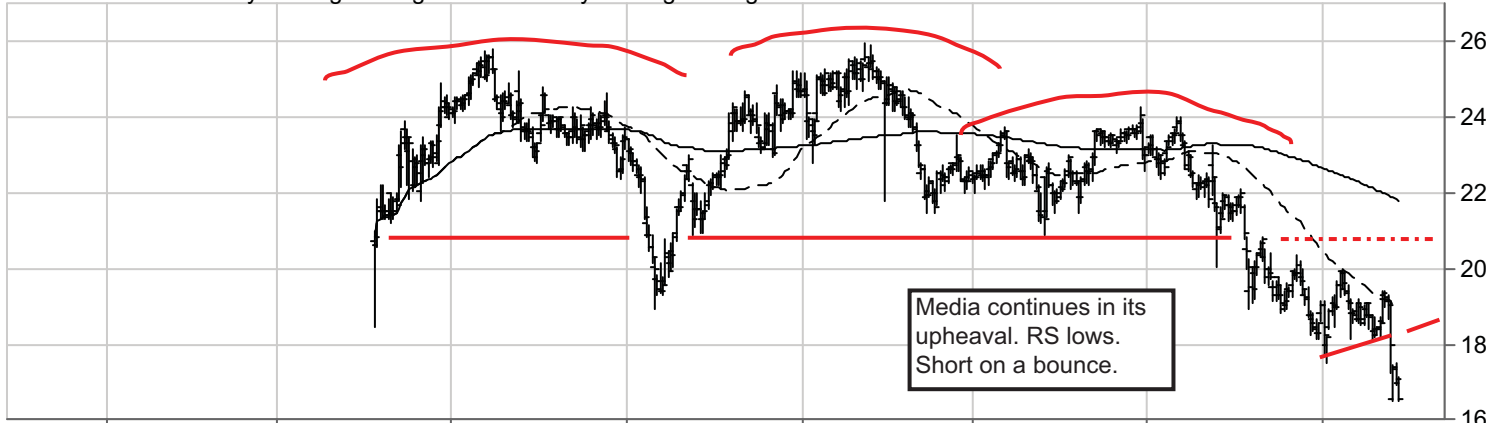
**Media**

Operates as magazine publisher

2013 P/E: 6.15x 2014 P/E: 10.48x

US dollars

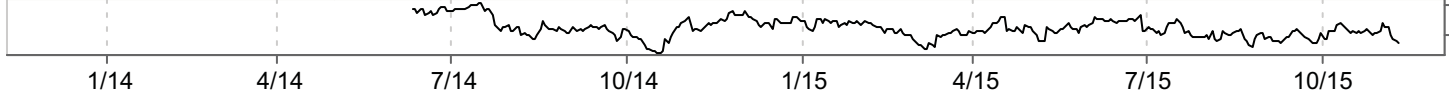
Price -- 50 Day Moving Average — 200 Day Moving Average



TIME-USA - Price Relative to S&P 500



Time Inc - Relative Strength Index (RSI)



Time Inc - Volume - Daily - for Date Requested

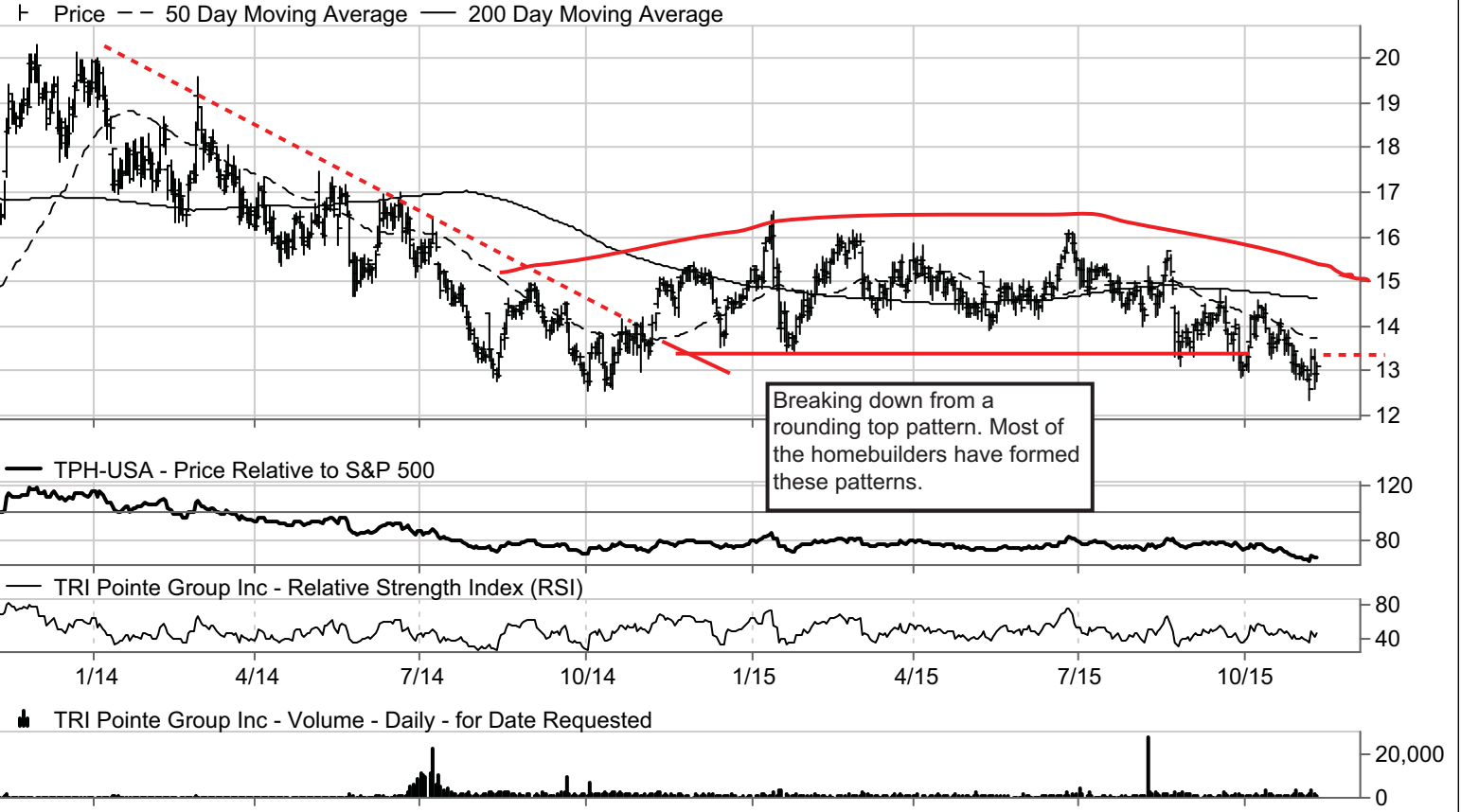


**TPH-USA**

TRI Pointe Group Inc \$13.11  
 Price Chg: \$0.17 % Chg: 1.31 Avg Vol: 1,486,297 Yield: 0 % MktCap: \$2,120.4 MM  
 % Chg: -20.55%

**Household Durables**

Provides homebuilding services  
 2013 P/E: 26.22x 2014 P/E:22.6x  
 US dollars

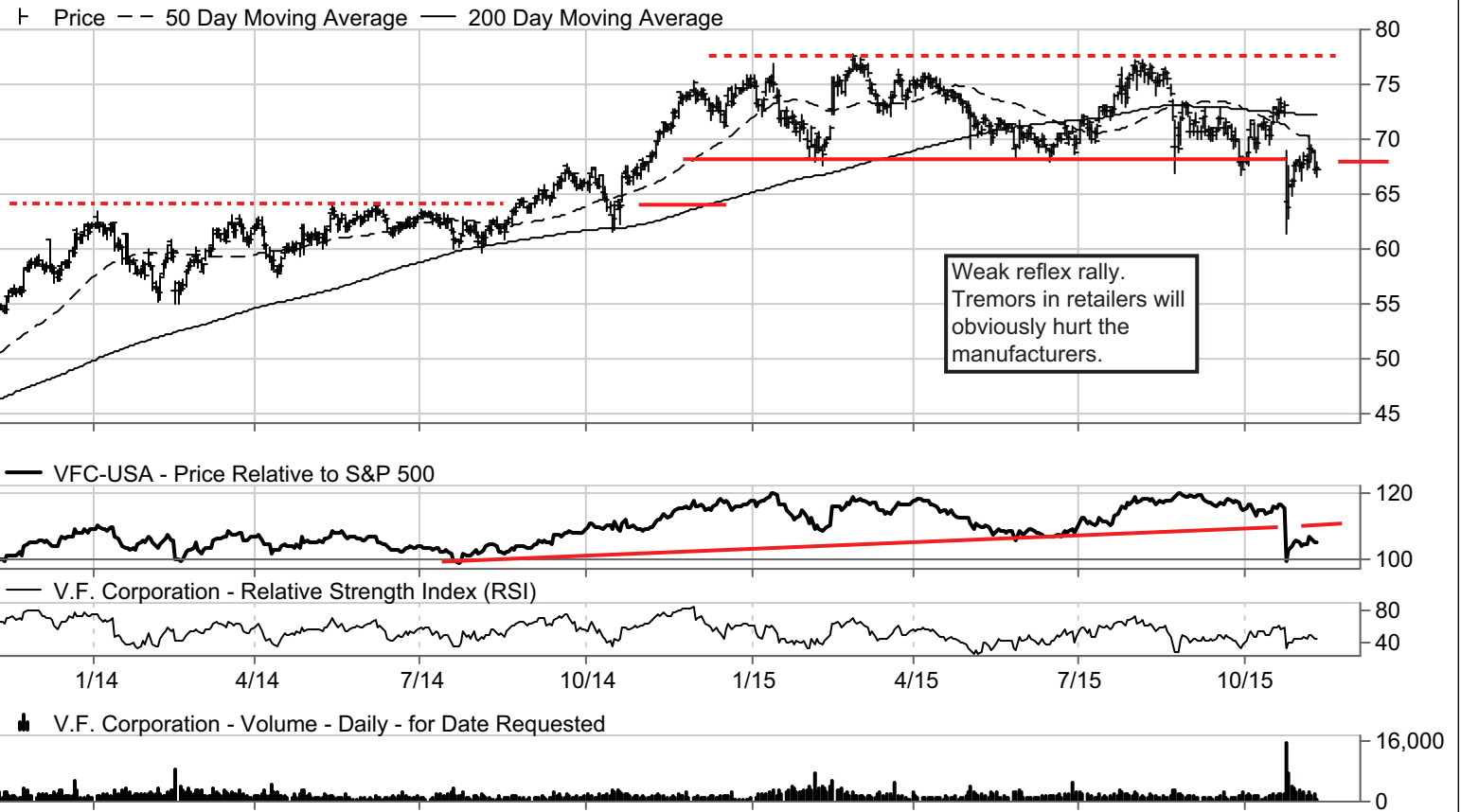


**VFC-USA**

V.F. Corporation \$67.31  
 Price Chg: \$-0.10 % Chg: -0.15 Avg Vol: 1,859,813 Yield: 2.2 % MktCap: \$28,694.9 MM  
 % Chg: 23.08%

**Textiles Apparel & Luxury Goods**

Designs, manufactures, and sells jeans-wear, decorated knitwear and in  
 2013 P/E: 24.66x 2014 P/E:21.85x  
 US dollars



**VSH-USA**

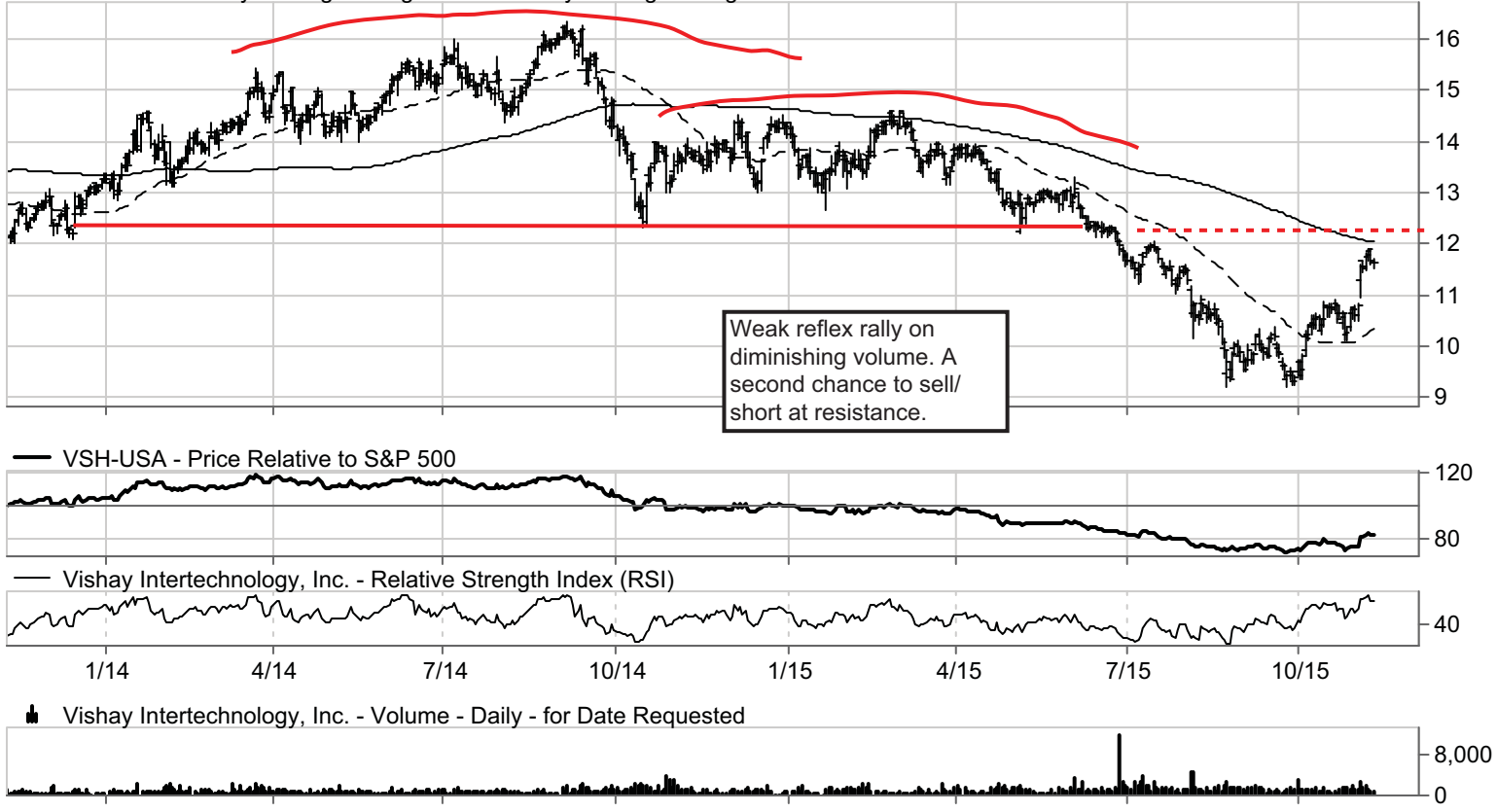
Vishay Intertechnology, Inc. \$11.64

Price Chg: \$-0.04 % Chg: -0.34 Avg Vol: 1,165,088 Yield: 2.05 % MktCap: \$1,716.3 MM 2013 P/E: 14.73x 2014 P/E:12.65x  
 % Chg: -3.88% US dollars

**Electronic Equipment Instruments & Components**

Manufactures and markets electronic components and semiconductors

Price — 50 Day Moving Average — 200 Day Moving Average



**WBA-USA**

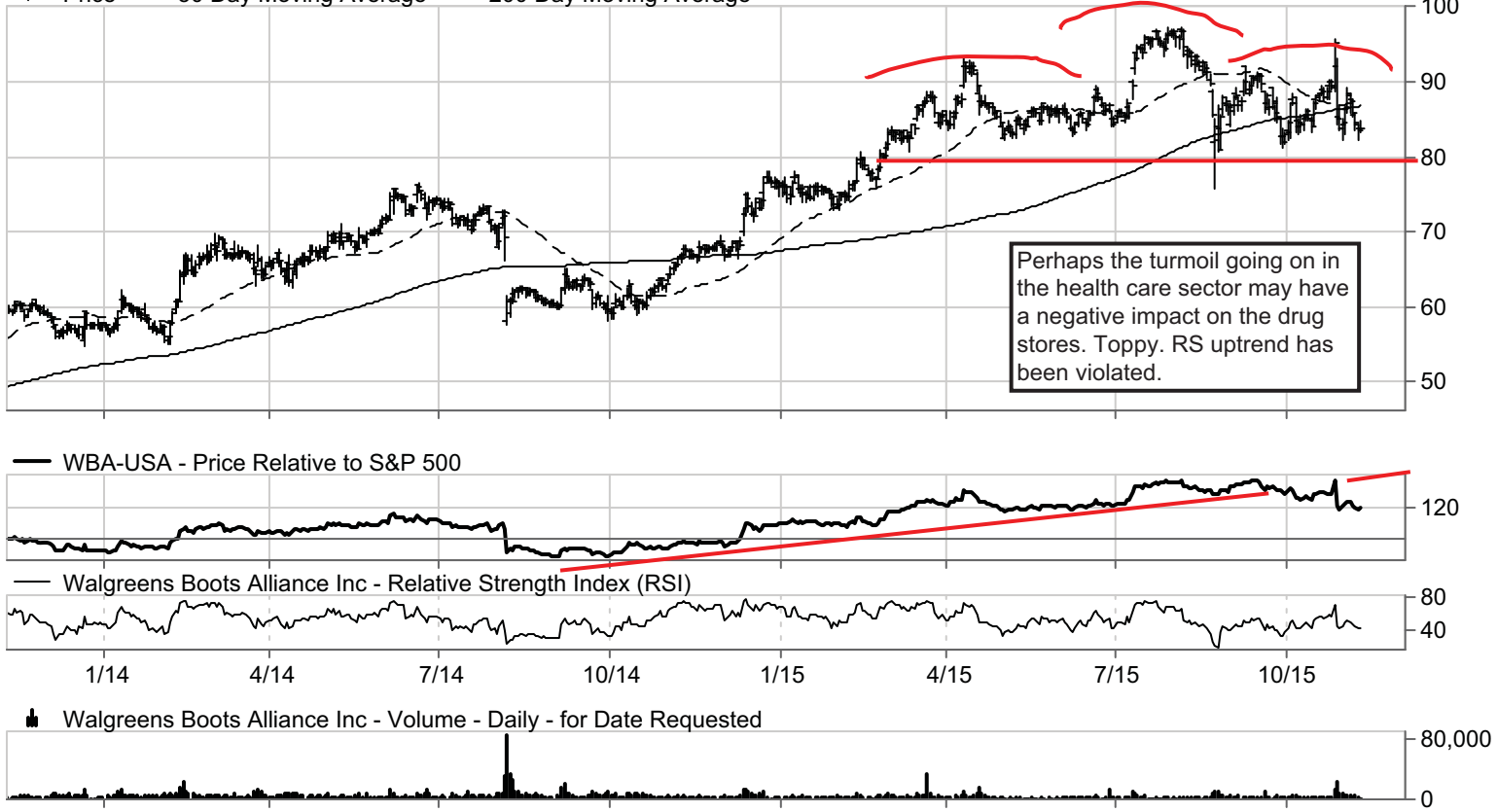
Walgreens Boots Alliance Inc \$83.81

Price Chg: \$0.33 % Chg: 0.40 Avg Vol: 5,538,566 Yield: 1.72 % MktCap: \$91,251.5 MM 2013 P/E: 26.86x 2014 P/E:25.55x  
 % Chg: 40.39% US dollars

**Food & Staples Retailing**

Provides drug store services

Price — 50 Day Moving Average — 200 Day Moving Average



This page intentionally left blank.

---

David P. Nicoski, CMT  
952-922-7502  
dave@vermilioncap.com

Shelley D. Moen, CMT  
952-922-7504  
shelley@vermilioncap.com

Joe W. Jasper, CFA  
952-922-7501  
joe@vermilioncap.com

John M. Betz, CMT  
952-922-7506  
john@vermilioncap.com

---

920 2nd Avenue S; Suite 1225 • Minneapolis, MN 55402 • 952-922-7500 • [www.vermilioncap.com](http://www.vermilioncap.com)

**Disclaimer:** The information contained herein is privileged, confidential and protected from disclosure. Any unauthorized disclosure distribution, dissemination or copying of this material or any attachment is strictly prohibited; such information, whether derived from Vermilion Technical Research, LLC or from any oral or written communication by way of opinion, advice, or otherwise with a principal of the company is not warranted in any manner whatsoever, is for the use of our customers only and may be obtained from internal and external research sources considered to be reliable. It is not necessarily complete and its accuracy is not guaranteed by Vermilion Technical Research, LLC, its operating entity or the principals therein. Neither the information nor any opinion expressed constitutes a solicitation for the purchase of any future or security referred to in Vermilion research publications. Principals of Vermilion Technical Research, LLC may or may not hold, or be short of, securities discussed herein, or of any other securities, at any time. The foregoing also expressly applies to any trial subscription.