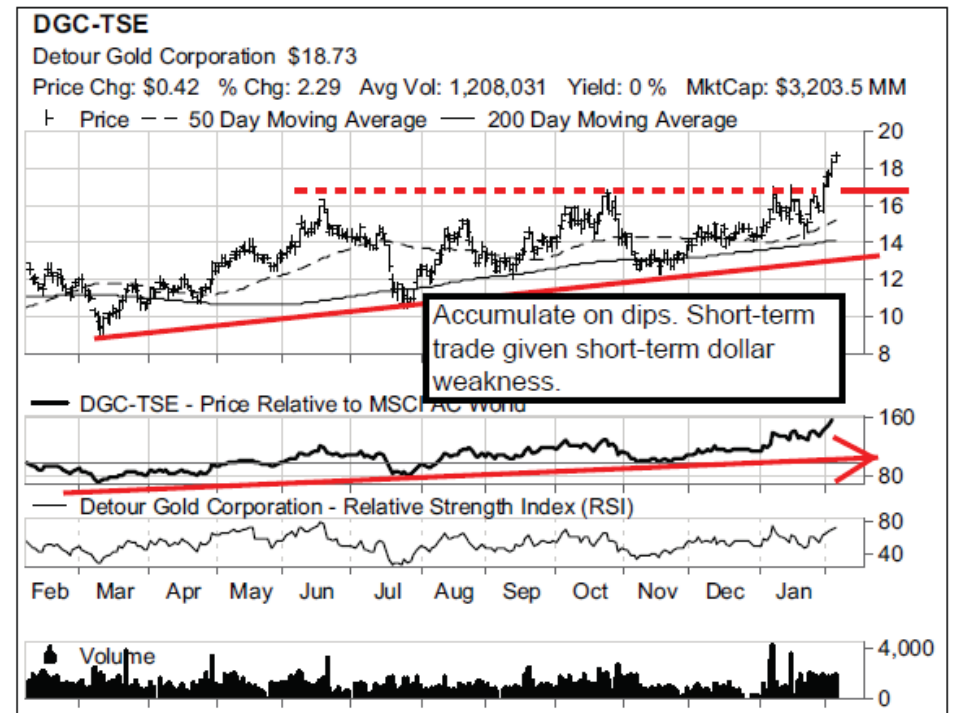
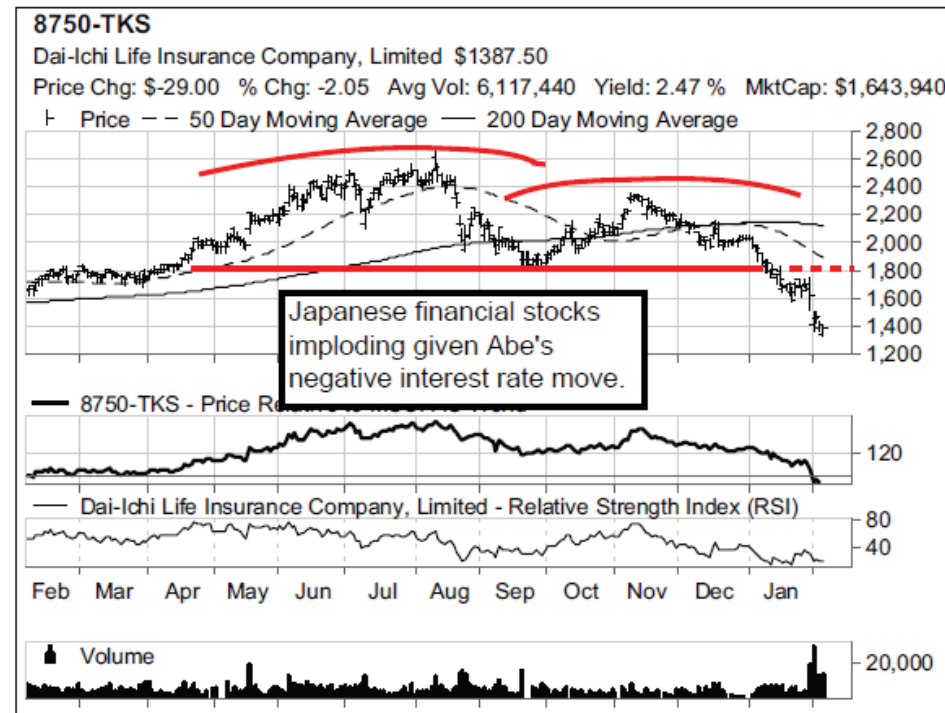


Market Rankings for the most Positive and Negative International Stocks

February 5, 2016

In this product we rank the most positive and negative international stocks, filter the symbols by market-cap and trading volume, and then divide the list into sectors/countries. We then manually analyze the charts of the filtered names for technical significance: breakouts/breakdowns, sector/country themes, relative strength leadership changes, bottom-up/top-down ideas, short-term patterns that may have long-term significance, etc. We believe you will find this product valuable as significant price and relative moves begin in the daily charts.



David P. Nicoski, CMT
 952-922-7502
dave@vermilioncap.com

Shelley D. Moen, CMT
 952-922-7504
shelley@vermilioncap.com

Joe W. Jasper, CFA
 952-922-7501
joe@vermilioncap.com

John M. Betz, CMT
 952-922-7506
john@vermilioncap.com

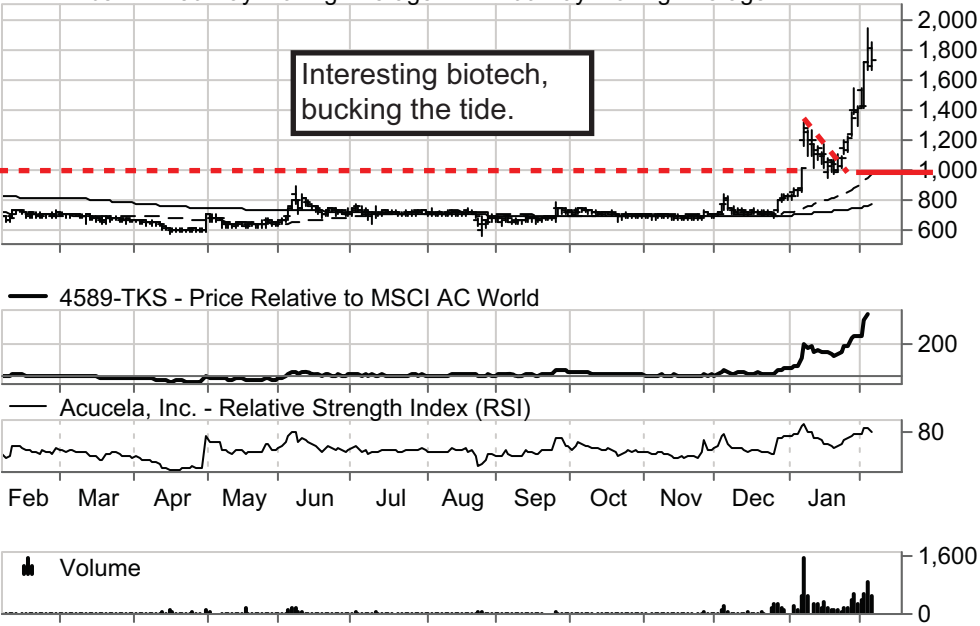
4589-TKS

Acucela, Inc. \$1729.00

Price Chg: \$-84.00 % Chg: -4.63 Avg Vol: 64,485 Yield: 0 % MktCap: \$63,138.1 MM

Price -- 50 Day Moving Average — 200 Day Moving Average

Interesting biotech, bucking the tide.



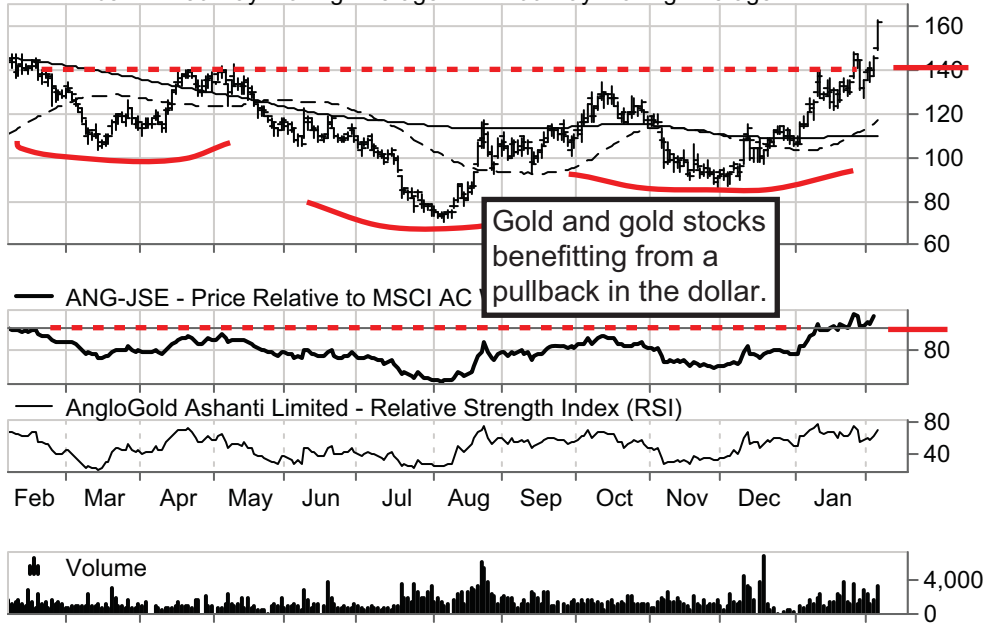
ANG-JSE

AngloGold Ashanti Limited \$161.76

Price Chg: \$15.61 % Chg: 10.68 Avg Vol: 1,499,542 Yield: 0 % MktCap: \$65,588.0 MM

Price -- 50 Day Moving Average — 200 Day Moving Average

Gold and gold stocks benefitting from a pullback in the dollar.



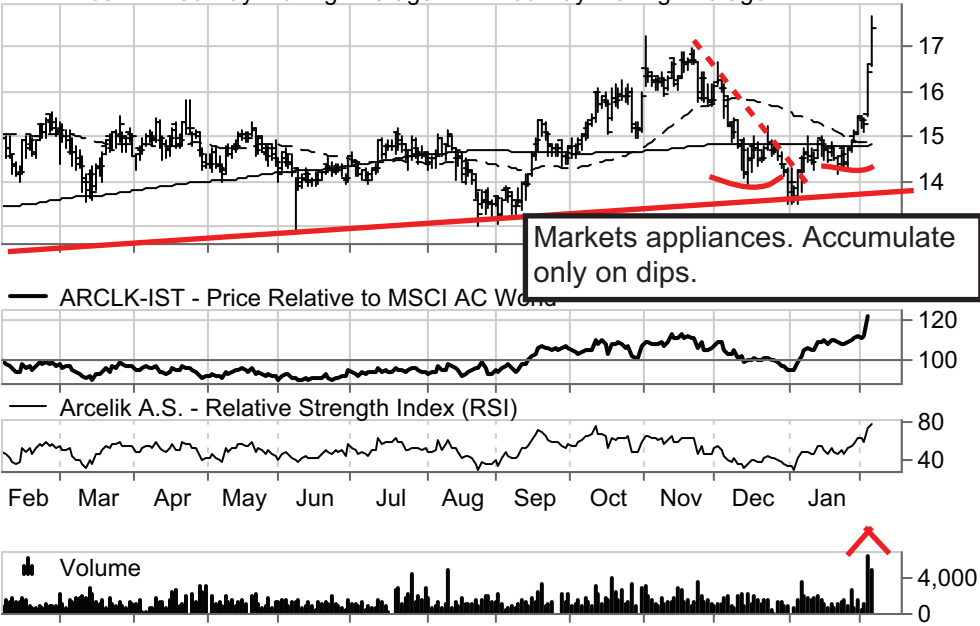
ARCLK-IST

Arcelik A.S. \$17.37

Price Chg: \$0.93 % Chg: 5.66 Avg Vol: 1,500,595 Yield: 3.15 % MktCap: \$11,737.4 MM

Price -- 50 Day Moving Average — 200 Day Moving Average

Markets appliances. Accumulate only on dips.



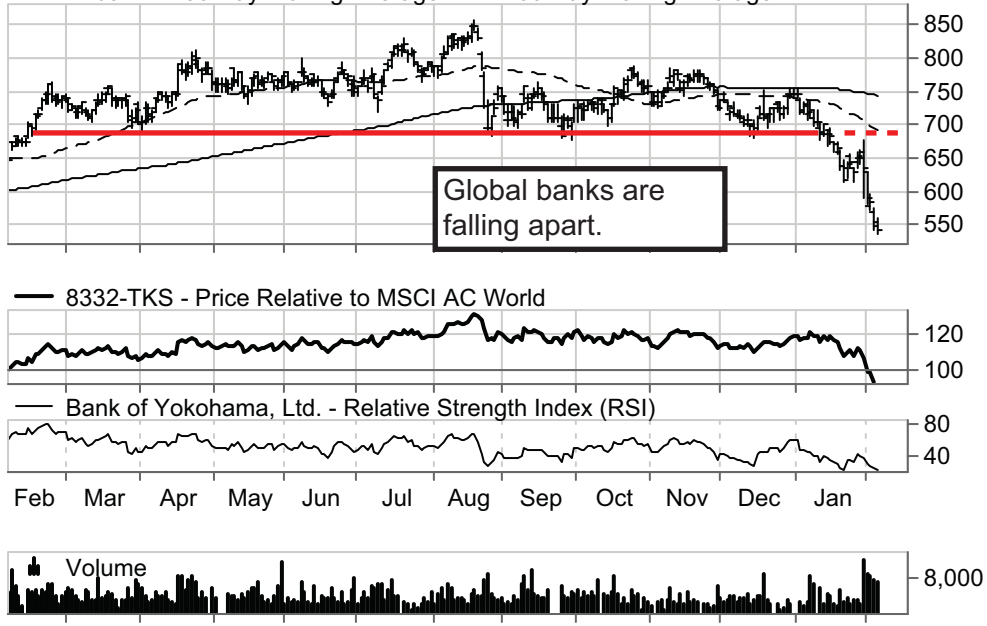
8332-TKS

Bank of Yokohama, Ltd. \$542.50

Price Chg: \$-6.90 % Chg: -1.26 Avg Vol: 4,586,271 Yield: 2.55 % MktCap: \$671,496.5 MM

Price -- 50 Day Moving Average — 200 Day Moving Average

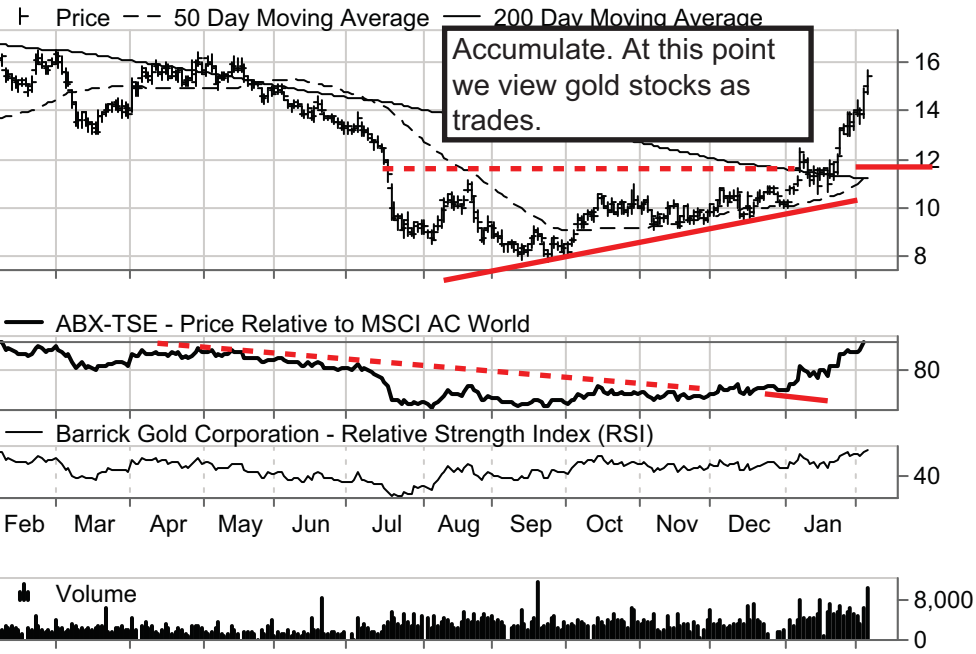
Global banks are falling apart.



ABX-TSE

Barrick Gold Corporation \$15.41

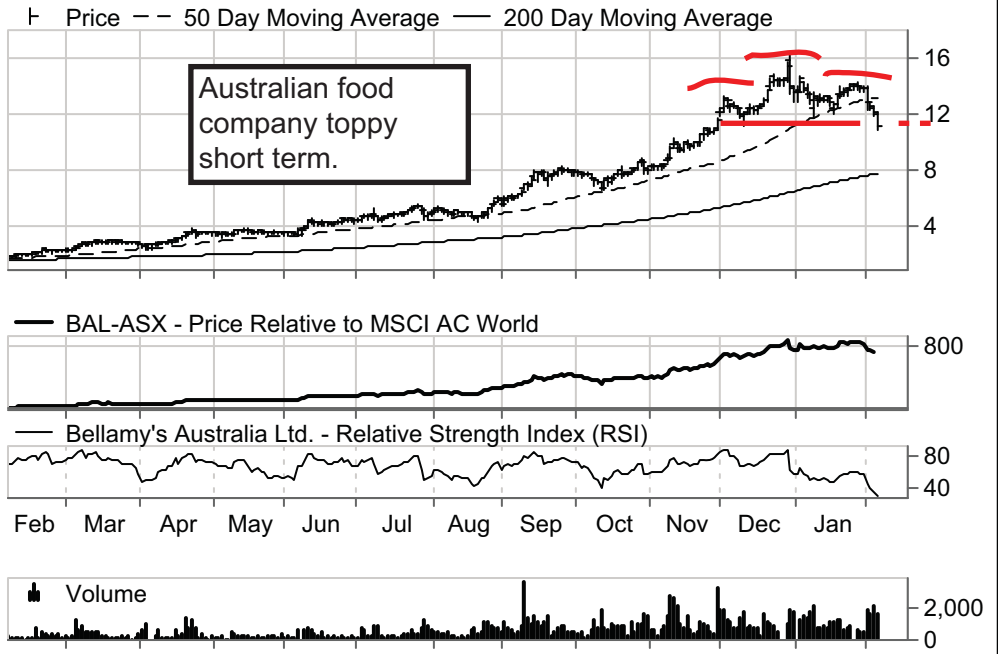
Price Chg: \$0.64 % Chg: 4.33 Avg Vol: 3,094,569 Yield: 0.71 % MktCap: \$17,953.9 MM



BAL-ASX

Bellamy's Australia Ltd. \$11.14

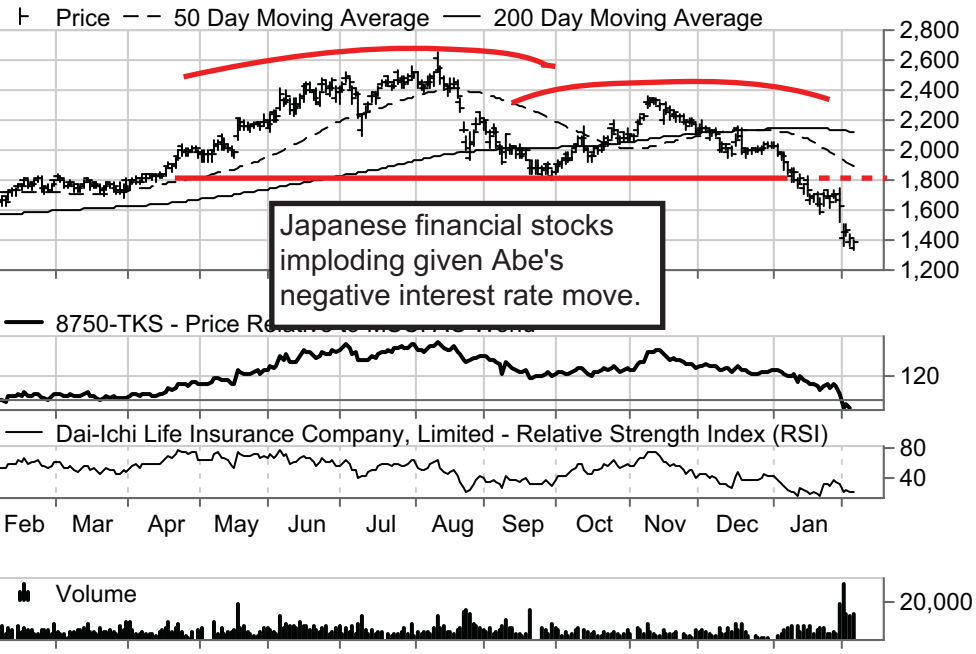
Price Chg: \$-0.84 % Chg: -7.01 Avg Vol: 671,335 Yield: 0.24 % MktCap: \$1,076.5 MM



8750-TKS

Dai-ichi Life Insurance Company, Limited \$1387.50

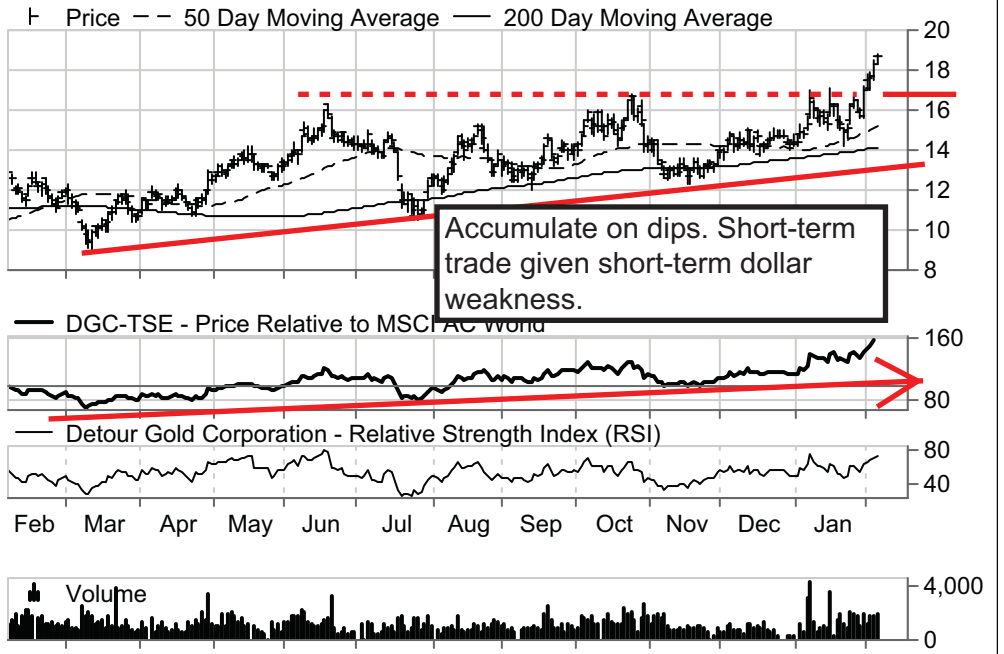
Price Chg: \$-29.00 % Chg: -2.05 Avg Vol: 6,117,440 Yield: 2.47 % MktCap: \$1,643,940



DGC-TSE

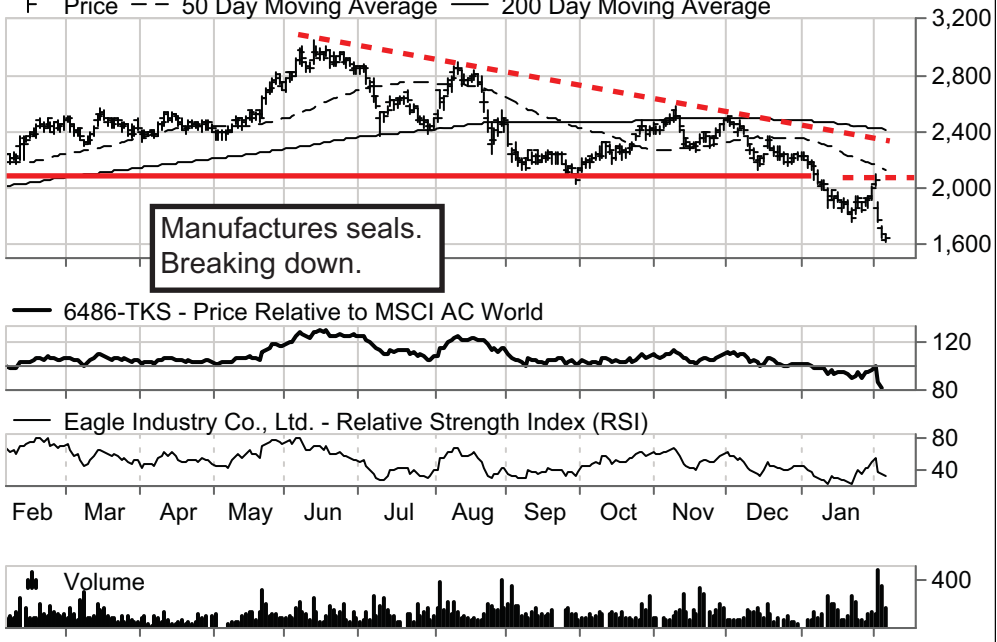
Detour Gold Corporation \$18.73

Price Chg: \$0.42 % Chg: 2.29 Avg Vol: 1,208,031 Yield: 0 % MktCap: \$3,203.5 MM



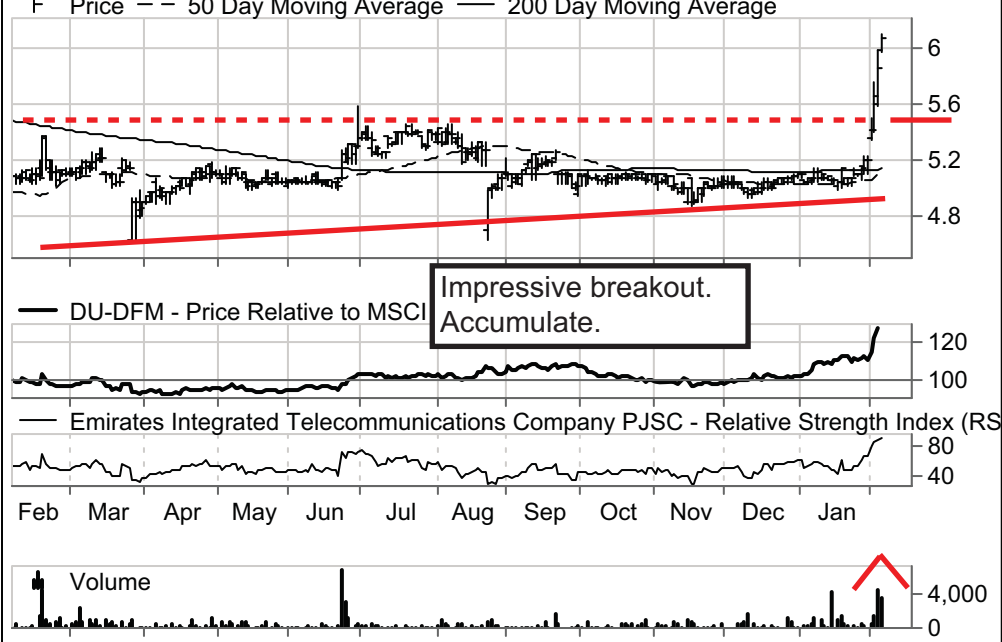
6486-TKS

Eagle Industry Co., Ltd. \$1653.00
 Price Chg: \$-25.00 % Chg: -1.49 Avg Vol: 121,448 Yield: 2.68 % MktCap: \$79,887.4 MM
 Price -- 50 Day Moving Average --- 200 Day Moving Average



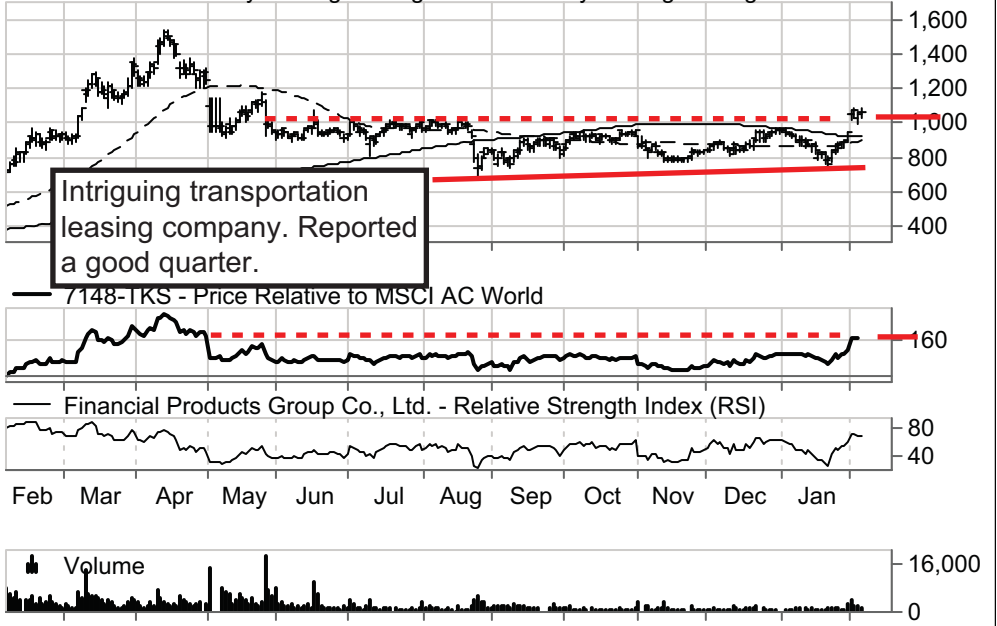
DU-DFM

Emirates Integrated Telecommunications Company PJSC \$6.06
 Price Chg: \$0.21 % Chg: 3.59 Avg Vol: 432,019 Yield: 5.64 % MktCap: \$27,702.9 MM
 Price -- 50 Day Moving Average --- 200 Day Moving Average



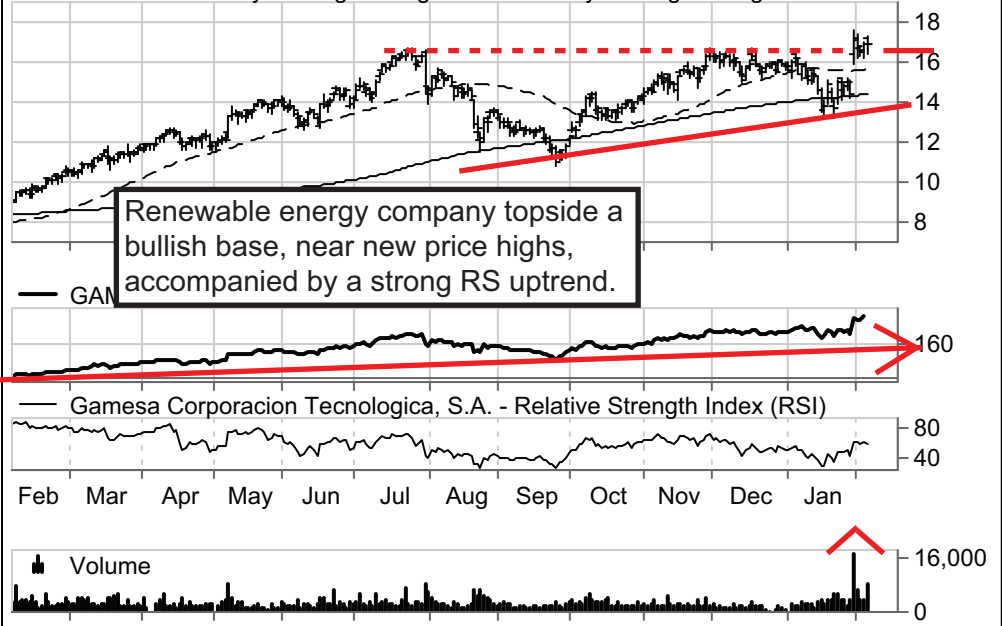
7148-TKS

Financial Products Group Co., Ltd. \$1059.00
 Price Chg: \$2.00 % Chg: 0.19 Avg Vol: 2,457,823 Yield: 2.55 % MktCap: \$99,856.2 MM
 Price -- 50 Day Moving Average --- 200 Day Moving Average



GAM-MCE

Gamesa Corporacion Tecnologica, S.A. \$16.93
 Price Chg: \$-0.05 % Chg: -0.27 Avg Vol: 2,878,833 Yield: 0.39 % MktCap: \$4,676.5 MM
 Price -- 50 Day Moving Average --- 200 Day Moving Average



532617-BOM

Jet Airways (India) Limited \$529.45

Price Chg: \$-31.25 % Chg: -5.57 Avg Vol: 646,395 Yield: 0 % MktCap: \$60,144.1 MM

Price 50 Day Moving Average 200 Day Moving Average

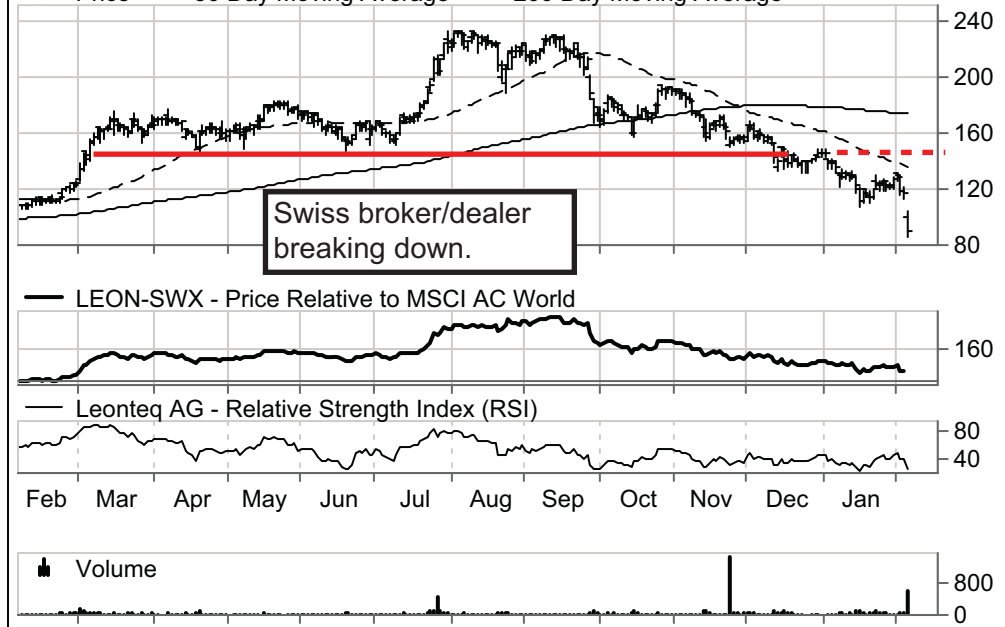


LEON-SWX

Leonteq AG \$90.20

Price Chg: \$-27.20 % Chg: -23.17 Avg Vol: 49,956 Yield: 1.49 % MktCap: \$1,434.8 MM

Price 50 Day Moving Average 200 Day Moving Average



9551-TKS

METAWATER Co.Ltd. \$2322.00

Price Chg: \$5.00 % Chg: 0.22 Avg Vol: 134,873 Yield: 2.5 % MktCap: \$60,194.4 MM

Price 50 Day Moving Average 200 Day Moving Average

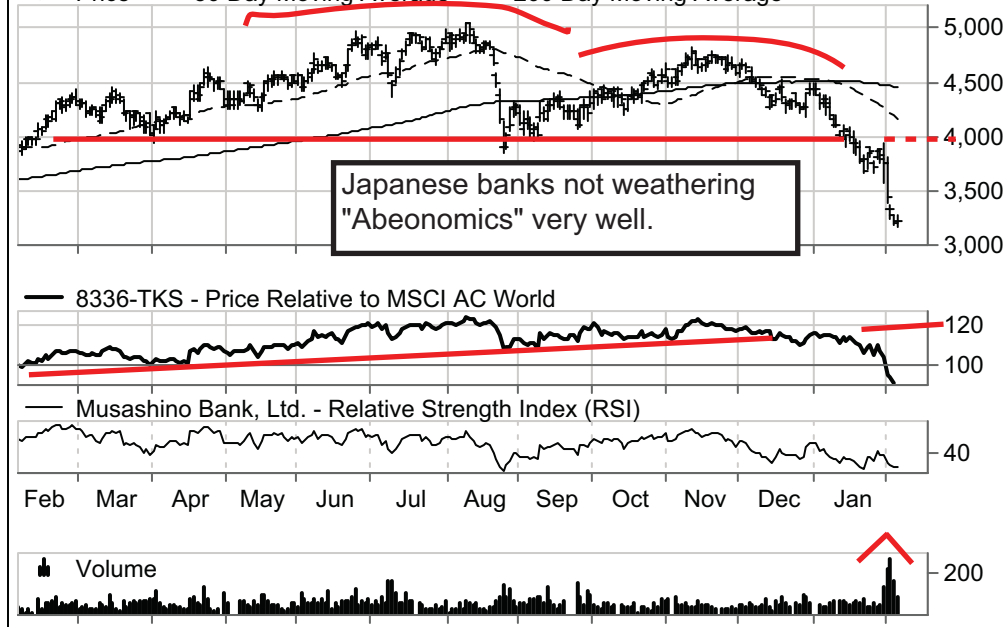


8336-TKS

Musashino Bank, Ltd. \$3220.00

Price Chg: \$0.00 % Chg: 0.00 Avg Vol: 61,264 Yield: 2.48 % MktCap: \$107,979.6 MM

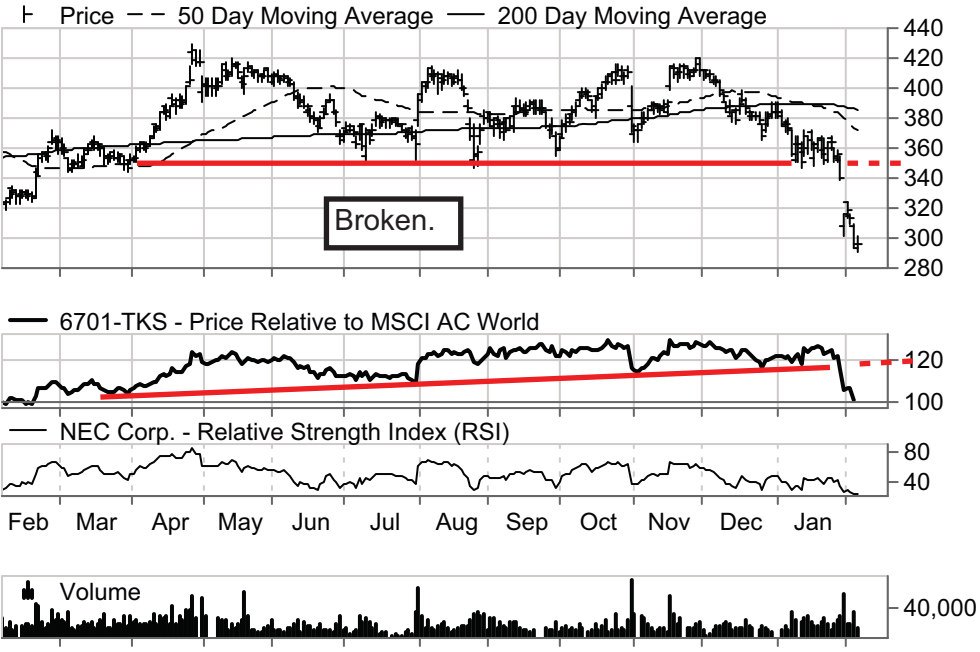
Price 50 Day Moving Average 200 Day Moving Average



6701-TKS

NEC Corp. \$297.00

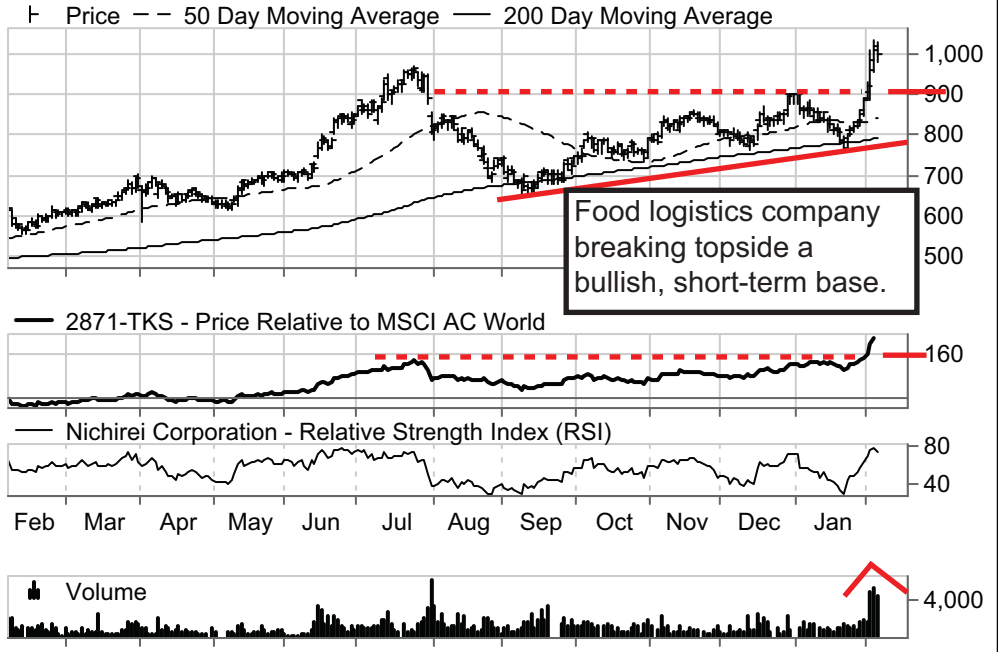
Price Chg: \$0.00 % Chg: 0.00 Avg Vol: 19,072,168 Yield: 2.02 % MktCap: \$771,834.7 M



2871-TKS

Nichirei Corporation \$999.00

Price Chg: -\$19.00 % Chg: -1.87 Avg Vol: 1,353,809 Yield: 1.18 % MktCap: \$285,532.7 M



NHM-JSE

Northam Platinum Limited \$36.03

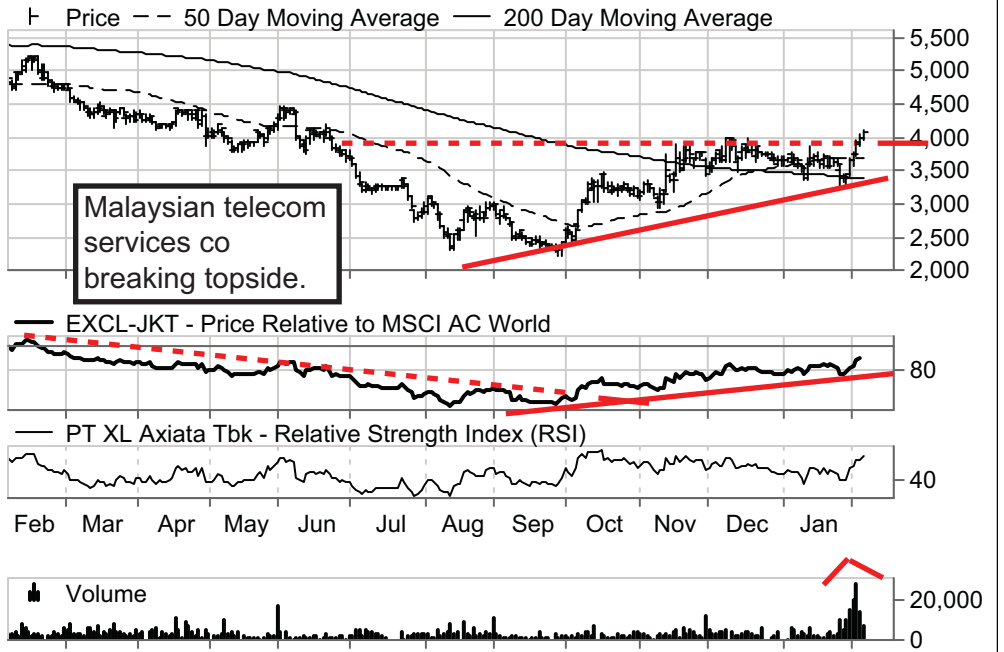
Price Chg: \$2.63 % Chg: 7.87 Avg Vol: 1,055,461 Yield: 0 % MktCap: \$18,367.4 MM



EXCL-JKT

PT XL Axiata Tbk \$4095.00

Price Chg: \$95.00 % Chg: 2.38 Avg Vol: 3,518,703 Yield: 0 % MktCap: \$34,976,950.0 M

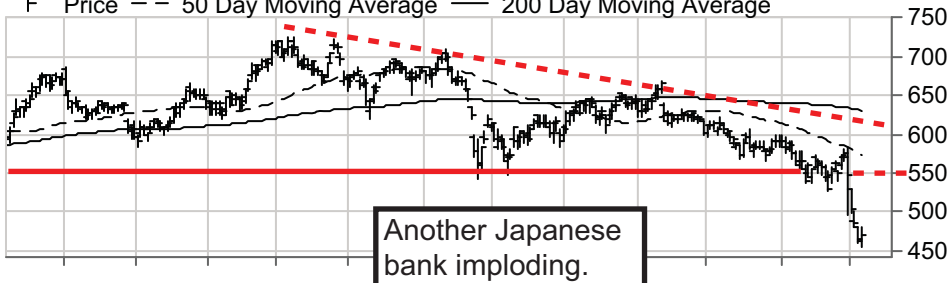


8308-TKS

Resona Holdings, Inc. \$468.70

Price Chg: \$2.90 % Chg: 0.62 Avg Vol: 11,569,573 Yield: 3.65 % MktCap: \$1,086,696.4

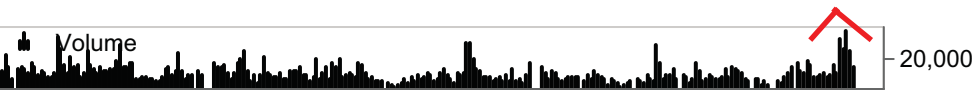
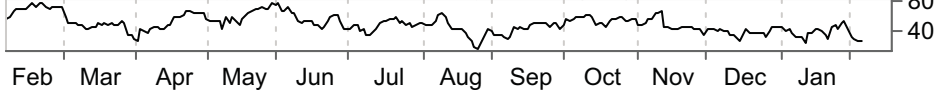
Price -- 50 Day Moving Average — 200 Day Moving Average



8308-TKS - Price Relative to MSCI AC World



Resona Holdings, Inc. - Relative Strength Index (RSI)



018260-KRX

SAMSUNG SDS CO.LTD \$206500.00

Price Chg: \$5500.00 % Chg: 2.74 Avg Vol: 159,642 Yield: 0.25 % MktCap: \$15,972,814

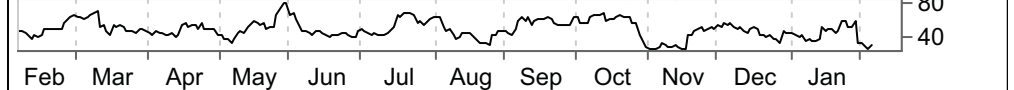
Price -- 50 Day Moving Average — 200 Day Moving Average



018260-KRX - Price Relative to MSCI AC World



SAMSUNG SDS CO.LTD - Relative Strength Index (RSI)



4548-TKS

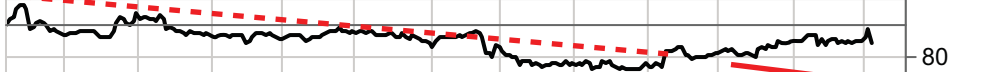
Seikagaku Corporation \$1470.00

Price Chg: \$-190.00 % Chg: -11.45 Avg Vol: 232,969 Yield: 1.57 % MktCap: \$83,503.1

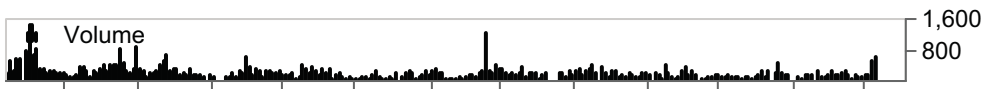
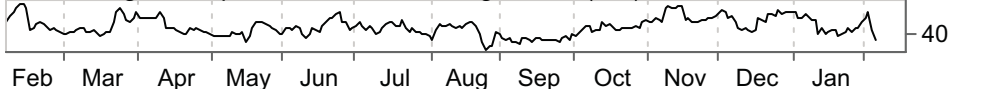
Price -- 50 Day Moving Average — 200 Day Moving Average



4548-TKS - Price Relative to MSCI AC World



Seikagaku Corporation - Relative Strength Index (RSI)

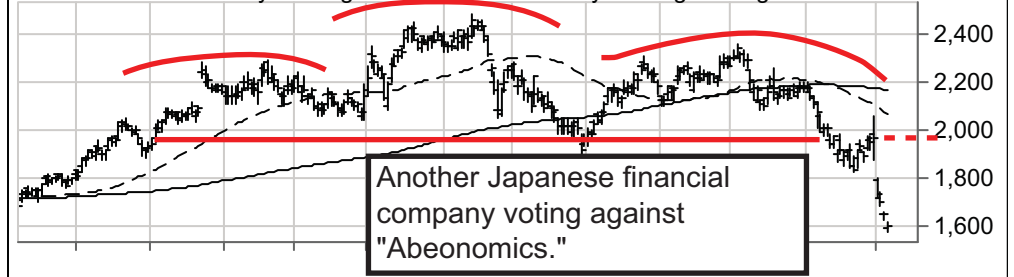


8729-TKS

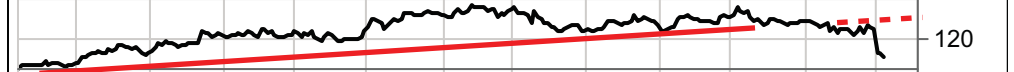
Sony Financial Holdings Inc. \$1598.00

Price Chg: \$-55.00 % Chg: -3.33 Avg Vol: 1,317,505 Yield: 3.33 % MktCap: \$695,129.9

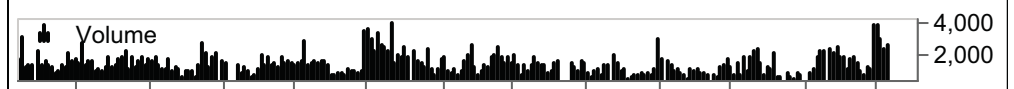
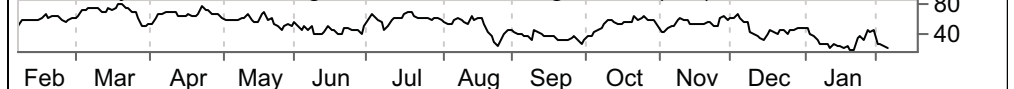
Price -- 50 Day Moving Average — 200 Day Moving Average



8729-TKS - Price Relative to MSCI AC World



Sony Financial Holdings Inc. - Relative Strength Index (RSI)

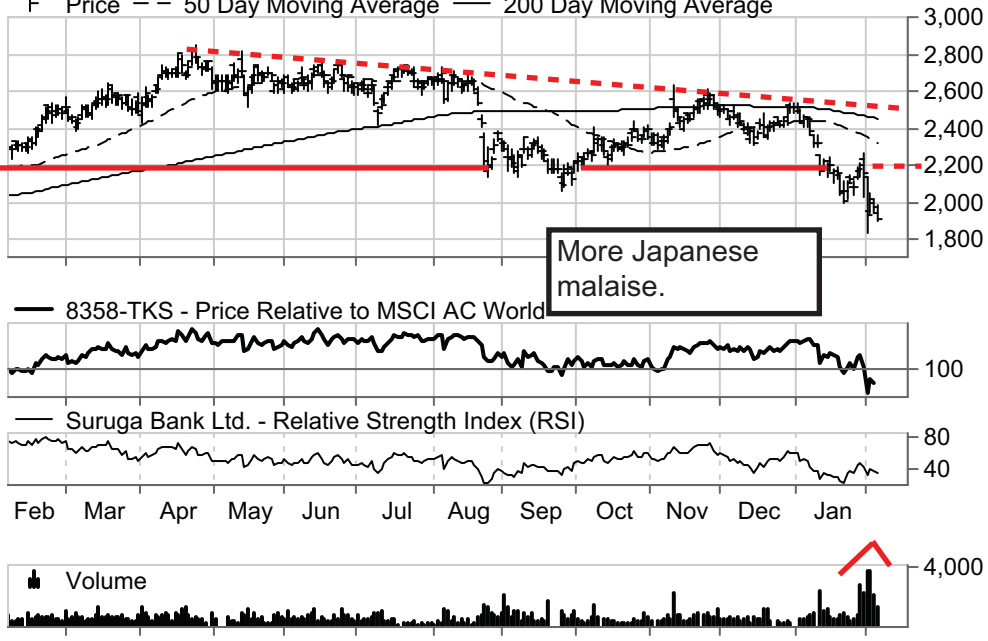


8358-TKS

Suruga Bank Ltd. \$1910.00

Price Chg: \$-63.00 % Chg: -3.19 Avg Vol: 790,163 Yield: 0.96 % MktCap: \$403,679.3 MM

Price -- 50 Day Moving Average — 200 Day Moving Average



TKG-JSE

Telkom SA SOC Ltd. \$54.30

Price Chg: \$0.30 % Chg: 0.56 Avg Vol: 1,511,777 Yield: 3.98 % MktCap: \$28,060.0 MM

Price -- 50 Day Moving Average — 200 Day Moving Average

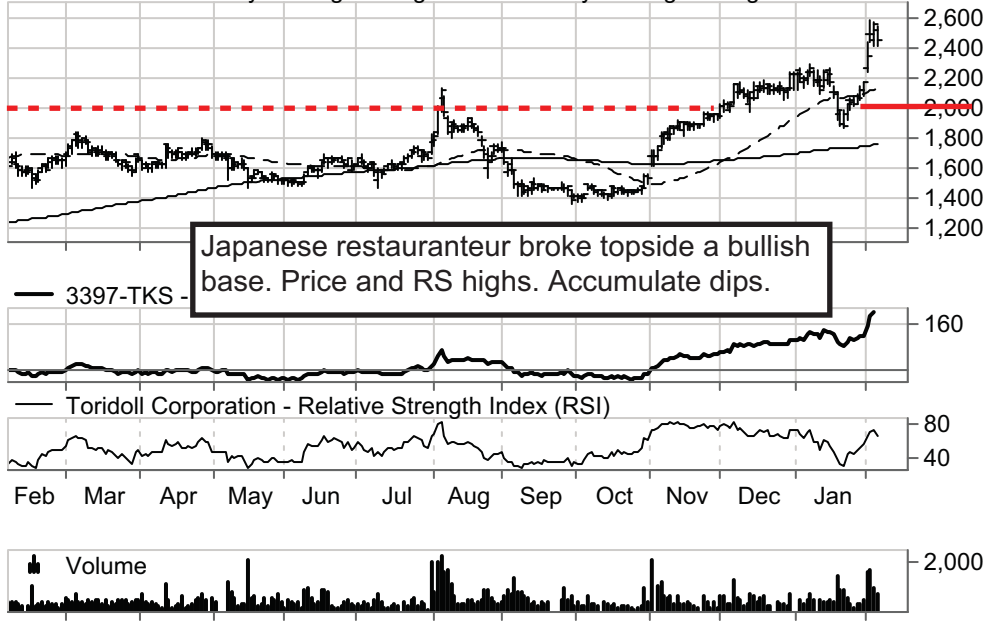


3397-TKS

Toridoll Corporation \$2449.00

Price Chg: \$-110.00 % Chg: -4.30 Avg Vol: 533,764 Yield: 0.66 % MktCap: \$105,946.4 MM

Price -- 50 Day Moving Average — 200 Day Moving Average

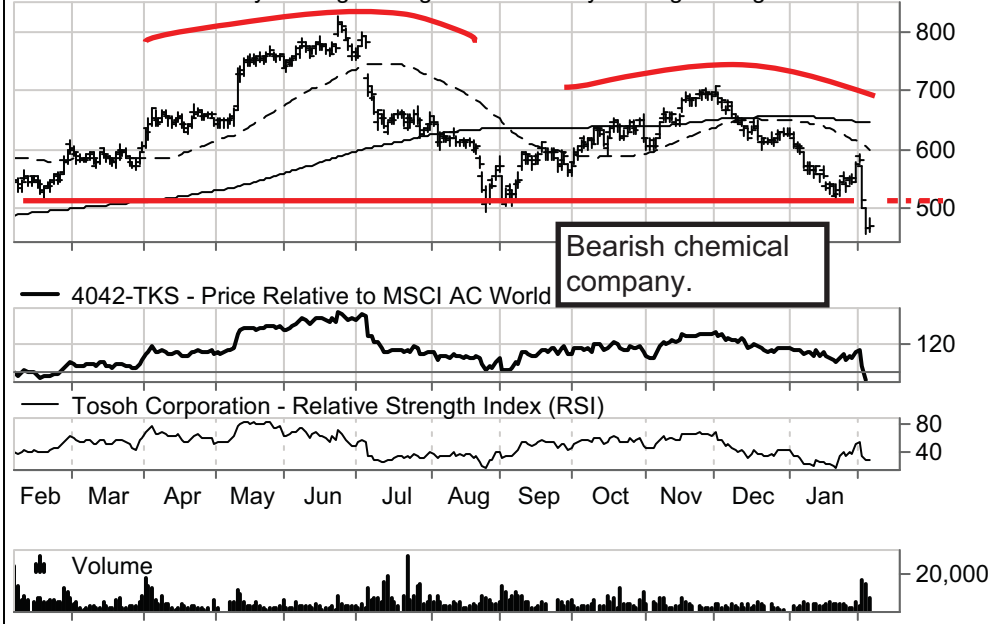


4042-TKS

Tosoh Corporation \$468.00

Price Chg: \$2.00 % Chg: 0.43 Avg Vol: 5,282,798 Yield: 3 % MktCap: \$303,575.4 MM

Price -- 50 Day Moving Average — 200 Day Moving Average



Int'l Leaders. Highlighting inflections and themes. Sorted by Sector/Country.

FDS Ticker Symbol	Company Name	Current Price 2/04/16	Closing Price 2/03/16	Sec Market Value (USD) > \$500MM	Net Chg	% Chg	Total CVol	Average of Daily Volume	Country Primary Listing	FactSet Econ Sector
KROT3-BR	Kroton Educacional S.A.	9.3	8.7	3,580.5	1.47	18.77	63,086.5	7,267.0	BRAZIL	Commercial Services
EXCL-ID	PT XL Axiata Tbk	4,095.0	4,000.0	2,481.2	695.00	20.44	94,486.1	20,807.3	INDONESIA	Communications
DU-AE	Emirates Integrated Telecommunications Compan	6.1	5.9	7,281.4	0.86	16.54	10,754.4	3,071.6	UNITED AR	Communications
6753-JP	Sharp Corporation	160.0	137.0	1,975.4	22.00	15.94	548,730.0	26,272.0	JAPAN	Consumer Durables
ARCLK-TR	Arcelik A.S.	17.4	16.4	3,790.2	2.34	15.57	15,322.7	3,731.9	TURKEY	Consumer Durables
NATU3-BR	Natura Cosméticos S.A.	26.0	24.7	2,696.6	4.21	19.32	7,534.1	1,063.0	BRAZIL	Consumer Non-Durables
JBSS3-BR	JBS S.A.	10.9	10.4	7,501.0	1.53	16.36	121,904.9	16,946.1	BRAZIL	Consumer Non-Durables
OSEM-IL	Osem Investment Ltd.	80.1	65.7	1,840.6	14.20	21.55	1,561.8	111.0	ISRAEL	Consumer Non-Durables
2282-JP	NH Foods Ltd.	2,567.0	2,529.0	4,372.7	370.00	16.84	13,579.0	3,161.0	JAPAN	Consumer Non-Durables
ESTC3-BR	Estacio Participacoes S.A.	12.4	12.0	960.0	1.80	16.92	10,575.2	1,386.9	BRAZIL	Consumer Services
AYA-US	Amaya Inc.	13.7	13.5	1,806.6	3.77	38.12	3,628.7	464.4	CANADA	Consumer Services
AYA-CA	Amaya Inc.	18.8	18.6	1,792.0	4.90	35.23	8,558.1	1,801.5	CANADA	Consumer Services
6889-HK	Dynam Japan Holdings Co., Ltd.	10.1	9.9	992.1	1.45	16.84	4,544.8	845.5	JAPAN	Consumer Services
3397-JP	Toridoll Corporation	2,449.0	2,559.0	938.3	329.00	15.52	5,908.6	1,319.4	JAPAN	Consumer Services
CLS-US	Celestica Inc.	9.6	9.4	1,171.8	1.34	16.16	2,605.0	211.7	CANADA	Electronic Technology
1347-HK	Hua Hong Semiconductor Ltd	6.9	6.3	833.7	1.10	19.03	9,068.3	1,091.5	HONG KON	Electronic Technology
6724-JP	Seiko Epson Corp.	1,822.0	1,833.0	6,208.7	250.00	15.90	29,213.4	3,909.2	JAPAN	Electronic Technology
5347-TW	Vanguard International Semiconductor Co.	49.8	49.8	2,430.9	6.80	15.81	59,604.2	10,728.8	TAIWAN	Electronic Technology
ADRO-ID	PT Adaro Energy Tbk	620.0	575.0	1,335.7	100.00	19.23	359,029.6	66,405.4	INDONESIA	Energy Minerals
EXX-ZA	Exxaro Resources Limited	72.0	60.7	1,340.2	17.04	30.98	9,275.3	932.6	SOUTH AFF	Energy Minerals
BBD-US	Banco Bradesco S.A. Sponsored ADR Pfd	5.1	4.8	12,091.7	0.91	21.66	115,215.7	17,618.8	BRAZIL	Finance
75-HK	Y. T. Realty Group Ltd.	7.0	6.8	693.0	1.25	21.82	4,772.9	1,247.7	HONG KON	Finance
7148-JP	Financial Products Group Co., Ltd.	1,059.0	1,057.0	844.8	171.00	19.26	15,346.5	2,469.8	JAPAN	Finance
3003-JP	Hulic Co., Ltd.	1,101.0	1,087.0	6,104.2	162.00	17.25	22,181.2	3,608.1	JAPAN	Finance
4010-SA	Dur Hospitality Company	23.3	23.7	631.4	2.96	14.58	1,857.9	431.3	SAUDI ARA	Finance
9945-TW	Ruentex Development Co., Ltd.	42.5	42.5	1,763.7	5.70	15.49	38,563.0	12,919.0	TAIWAN	Finance
FGB-AE	First Gulf Bank	11.7	11.3	13,845.2	1.60	15.84	22,099.9	2,057.2	UNITED AR	Finance
1515-HK	Phoenix Healthcare Group Co., Ltd.	7.0	6.7	718.3	1.00	16.64	33,089.4	5,185.1	HONG KON	Health Services
CXR-US	Concordia Healthcare Corp.	29.9	28.2	1,438.0	3.81	14.60	1,489.1	201.7	CANADA	Health Technology
4589-JP	Acucela, Inc.	1,729.0	1,813.0	561.1	327.00	23.32	3,288.0	738.6	JAPAN	Health Technology
4174-TW	OBI Pharma, Inc.	638.0	638.0	3,243.9	85.00	15.37	6,516.1	1,273.7	TAIWAN	Health Technology
SLW-US	Silver Wheaton Corp.	13.5	12.8	5,175.7	2.40	21.69	26,532.2	4,214.2	CANADA	Non-Energy Minerals
TCK.B-CA	Teck Resources Limited Class B	6.0	5.2	2,140.8	1.03	20.64	26,263.9	3,446.6	CANADA	Non-Energy Minerals
PAAS-US	Pan American Silver Corp.	7.7	7.3	1,107.2	1.29	20.16	15,551.0	2,236.2	CANADA	Non-Energy Minerals
SLW-CA	Silver Wheaton Corp.	18.7	17.7	5,149.3	3.07	19.70	8,635.3	1,274.4	CANADA	Non-Energy Minerals
DGC-CA	Detour Gold Corporation	18.8	18.3	2,261.3	3.03	19.24	9,409.9	1,857.3	CANADA	Non-Energy Minerals
GG-US	Goldcorp Inc.	13.1	12.4	10,312.8	2.05	18.50	64,353.4	12,579.3	CANADA	Non-Energy Minerals

FDS Ticker Symbol	Company Name	Current Price 2/04/16	Closing Price 2/03/16	Sec Market Value (USD) > \$500MM	Net Chg	% Chg	Total CVol	Average of Daily Volume	Country Primary Listing	FactSet Econ Sector
TAHO-US	Tahoe Resources Inc.	8.6	8.1	1,849.0	1.33	18.29	7,429.5	1,156.8	CANADA	Non-Energy Minerals
PAA-CA	Pan American Silver Corp.	10.7	10.0	1,101.1	1.64	18.14	1,786.1	289.5	CANADA	Non-Energy Minerals
G-CA	Goldcorp Inc.	18.2	17.1	10,264.5	2.59	16.65	22,666.7	4,103.3	CANADA	Non-Energy Minerals
ABX-US	Barrick Gold Corporation	11.2	10.7	12,501.3	1.59	16.46	124,536.7	17,758.3	CANADA	Non-Energy Minerals
LUMI-SE	Lundin Mining Corp Swedish DR	22.9	19.3	1,639.0	3.23	16.40	15,739.5	1,587.0	CANADA	Non-Energy Minerals
THO-CA	Tahoe Resources Inc.	11.9	11.2	1,837.0	1.65	16.19	5,239.9	782.7	CANADA	Non-Energy Minerals
ABR-DE	Barrick Gold Corporation	10.1	9.4	12,101.2	1.34	15.19	1,179.0	147.2	CANADA	Non-Energy Minerals
FNV-US	Franco-Nevada Corporation	49.1	47.3	7,476.0	6.28	14.68	6,072.9	963.1	CANADA	Non-Energy Minerals
ABX-CA	Barrick Gold Corporation	15.6	14.8	12,425.6	1.99	14.68	35,427.7	4,857.7	CANADA	Non-Energy Minerals
5413-JP	Nisshin Steel Co., Ltd.	1,279.0	1,286.0	1,197.3	187.00	17.12	15,296.8	2,601.0	JAPAN	Non-Energy Minerals
CX-US	Cemex SAB de CV Sponsored ADR	5.1	4.7	6,261.8	0.85	19.91	111,842.8	17,153.9	MEXICO	Non-Energy Minerals
CEMEXCPO-MX	Cemex SAB de CV Cert Part Ord Repr 2 ShsA & 1	9.3	8.4	6,123.1	1.54	19.74	486,200.5	80,167.5	MEXICO	Non-Energy Minerals
PE&OLES-MX	Industrias Penoles SAB de CV	190.6	184.5	3,969.9	26.72	16.31	3,630.4	899.3	MEXICO	Non-Energy Minerals
NIKL-PH	Nickel Asia Corp.	5.1	4.6	728.5	0.93	22.36	102,632.0	12,534.0	PHILIPPINE	Non-Energy Minerals
KIO-ZA	Kumba Iron Ore Limited	48.8	44.0	874.5	16.20	49.69	8,036.9	1,579.9	SOUTH AFF	Non-Energy Minerals
ARI-ZA	African Rainbow Minerals Limited	66.8	57.8	777.8	14.48	27.67	8,092.0	730.5	SOUTH AFF	Non-Energy Minerals
IMP-ZA	Impala Platinum Holdings Limited	38.0	32.0	1,450.9	8.12	27.18	39,634.8	2,994.7	SOUTH AFF	Non-Energy Minerals
AMS-ZA	Anglo American Platinum Limited	273.9	229.0	3,810.7	58.20	26.98	4,914.2	665.7	SOUTH AFF	Non-Energy Minerals
ANG-ZA	AngloGold Ashanti Limited	161.8	146.2	3,656.5	29.76	22.55	13,656.5	1,585.7	SOUTH AFF	Non-Energy Minerals
SBGL-US	Sibanye Gold Ltd. Sponsored ADR	10.6	9.7	2,228.5	1.64	18.41	9,897.0	1,869.9	SOUTH AFF	Non-Energy Minerals
GFI-ZA	Gold Fields Limited	64.5	58.6	2,813.6	9.80	17.93	20,455.8	2,741.3	SOUTH AFF	Non-Energy Minerals
AU-US	AngloGold Ashanti Limited Sponsored ADR	9.6	9.5	3,839.8	1.38	16.75	28,203.3	5,023.1	SOUTH AFF	Non-Energy Minerals
HAR-ZA	Harmony Gold Mining Co. Ltd.	36.1	33.0	889.3	4.69	14.92	21,878.4	2,094.3	SOUTH AFF	Non-Energy Minerals
KOZAL-TR	Koza Altin isletmeleri A.S.	14.1	12.8	664.4	1.79	14.55	6,609.0	877.2	TURKEY	Non-Energy Minerals
3941-JP	Rengo Co., Ltd.	618.0	586.0	1,346.3	118.00	23.60	17,678.0	3,667.5	JAPAN	Process Industries
2871-JP	Nichirei Corporation	999.0	1,018.0	2,552.7	150.00	17.67	20,622.0	5,080.0	JAPAN	Process Industries
4091-JP	Taiyo Nippon Sanso Corporation	1,177.0	1,023.0	3,755.2	151.00	14.72	7,480.1	665.7	JAPAN	Process Industries
KU2-DE	KUKA AG	78.7	72.1	3,065.1	10.28	15.03	1,023.7	140.1	GERMANY	Producer Manufacturing
7280-JP	Mitsuba Corporation	1,786.0	1,566.0	605.0	251.00	16.35	1,583.7	163.7	JAPAN	Producer Manufacturing
5727-JP	Toho Titanium Company, Limited	987.0	1,036.0	625.8	135.00	15.85	9,045.0	1,420.9	JAPAN	Producer Manufacturing
NHM-ZA	Northam Platinum Limited	36.0	33.4	1,050.6	5.14	16.64	5,921.9	602.2	SOUTH AFF	Producer Manufacturing
GAM-ES	Gamesa Corporacion Tecnologica, S.A.	16.9	17.0	5,239.7	2.53	17.60	43,149.7	3,705.8	SPAIN	Producer Manufacturing
CBD-US	Companhia Brasileira de Distribuicao Sponsored A	10.6	10.2	1,695.1	1.77	20.16	5,134.3	935.2	BRAZIL	Retail Trade
RON-CA	RONA, Inc.	23.4	23.3	1,798.6	11.66	99.40	25,828.2	9,996.6	CANADA	Retail Trade
8202-JP	Laox CO.,LTD.	205.0	216.0	1,215.4	30.00	17.14	256,140.0	67,092.5	JAPAN	Retail Trade
3626-JP	IT Holdings Corporation	2,901.0	2,957.0	2,200.2	385.00	15.30	4,396.8	983.9	JAPAN	Technology Services
ELP-US	Companhia Paranaense de Energia Sponsored AC	5.9	5.7	724.6	0.78	15.38	2,685.5	420.1	BRAZIL	Utilities

Int'l Laggards. Highlighting inflections and themes. Sorted by Sector/Group.

9474-JP	Zenrin Co., Ltd.	2,052.0	2,122.0	687.1	-349.00	-14.54	939.7	141.6	JAPAN	Commercial Services
TKG-ZA	Telkom SA SOC Ltd.	54.3	54.0	1,755.8	-9.40	-14.76	11,963.1	2,062.7	SOUTH AFF	Communications
2333-HK	Great Wall Motor Co., Ltd. Class H	5.5	5.5	2,165.7	-1.36	-19.85	603,189.4	89,922.9	HONG KON	Consumer Durables
@NA	Great Wall Motor Co., Ltd. Class H	5.5	5.5	2,165.7	-1.36	-19.85	603,189.4	89,922.9	HONG KON	Consumer Durables

FDS Ticker Symbol	Company Name	Current Price 2/04/16	Closing Price 2/03/16	Sec Market Value (USD) > \$500MM	Net Chg	% Chg	Total CVol	Country Average of Daily Primary Volume Listing	FactSet Econ Sector
BAL-AU	Bellamy's Australia Ltd.	11.1	12.0	822.9	-2.69	-19.45	8,198.7	1,849.9 AUSTRALIA	Consumer Non-Durables
SFL-IT	Safilo Group S.p.A.	8.3	8.1	559.9	-1.32	-13.84	1,710.1	363.4 ITALY	Consumer Non-Durables
CTG-CA	Colliers International Group Inc.	47.5	47.6	1,277.3	-12.34	-20.63	571.3	116.8 CANADA	Consumer Services
MMYT-US	MakeMyTrip Ltd.	15.8	15.7	660.2	-2.39	-13.15	1,419.7	332.0 INDIA	Consumer Services
2767-JP	Fields Corporation	1,780.0	1,743.0	512.6	-266.00	-13.00	715.8	156.3 JAPAN	Consumer Services
7517-JP	Kuroda Electric Co., Ltd.	1,536.0	1,571.0	525.2	-574.00	-27.20	2,733.3	473.0 JAPAN	Distribution Services
NOKIA-FI	Nokia Oyj	5.6	5.8	34,708.7	-0.85	-13.03	208,331.0	28,530.4 FINLAND	Electronic Technology
6645-JP	OMRON Corporation	2,992.0	2,942.0	5,335.1	-433.00	-12.64	14,585.0	1,877.6 JAPAN	Electronic Technology
6701-JP	NEC Corp.	297.0	297.0	6,556.8	-44.00	-12.90	177,644.0	27,479.5 JAPAN	Electronic Technology
6754-JP	Anritsu Corporation	660.0	670.0	784.3	-112.00	-14.51	12,711.7	2,254.7 JAPAN	Electronic Technology
532276-IN	Syndicate Bank Ltd.	57.9	59.3	575.9	-12.40	-17.65	3,572.5	483.3 INDIA	Finance
8370-JP	Kiyo Bank, Ltd.	1,314.0	1,330.0	827.4	-195.00	-12.92	1,180.4	220.5 JAPAN	Finance
8309-JP	Sumitomo Mitsui Trust Holdings, Inc.	337.2	337.9	11,179.3	-51.00	-13.14	234,164.0	36,855.0 JAPAN	Finance
8358-JP	Suruga Bank Ltd.	1,910.0	1,973.0	3,881.9	-292.00	-13.26	16,539.4	3,046.1 JAPAN	Finance
8324-JP	Daishi Bank, Ltd.	402.0	409.0	1,238.8	-62.00	-13.36	5,638.0	856.5 JAPAN	Finance
SMFG-US	Sumitomo Mitsui Financial Group, Inc. Sponsored	5.9	5.9	41,644.0	-0.93	-13.72	18,177.8	2,825.6 JAPAN	Finance
8355-JP	Shizuoka Bank, Ltd.	901.0	901.0	5,079.3	-151.00	-14.35	21,602.0	3,490.5 JAPAN	Finance
8795-JP	T&D Holdings, Inc.	1,179.0	1,225.5	7,078.5	-209.50	-15.09	41,834.4	6,381.8 JAPAN	Finance
8385-JP	Iyo Bank, Ltd.	859.0	877.0	2,406.7	-153.00	-15.12	6,754.4	1,406.0 JAPAN	Finance
8359-JP	Hachijuni Bank, Ltd.	567.0	575.0	2,490.9	-102.00	-15.25	11,468.0	1,971.5 JAPAN	Finance
8336-JP	Musashino Bank, Ltd.	3,220.0	3,220.0	922.6	-585.00	-15.37	920.2	208.5 JAPAN	Finance
8369-JP	Bank of Kyoto, Ltd.	811.0	816.0	2,622.6	-148.00	-15.43	11,469.0	1,872.5 JAPAN	Finance
8377-JP	Hokuhoku Financial Group, Inc.	186.0	193.0	2,211.0	-34.00	-15.45	38,865.0	6,622.0 JAPAN	Finance
7182-JP	Japan Post Bank Co., Ltd.	1,329.0	1,321.0	50,383.5	-249.00	-15.78	60,598.3	10,808.7 JAPAN	Finance
8332-JP	Bank of Yokohama, Ltd.	542.5	549.4	5,839.6	-107.00	-16.47	47,622.0	8,327.0 JAPAN	Finance
8750-JP	Dai-ichi Life Insurance Company, Limited	1,387.5	1,416.5	14,383.2	-291.50	-17.36	95,237.5	14,014.8 JAPAN	Finance
8379-JP	Hiroshima Bank Ltd.	488.0	497.0	2,633.9	-107.00	-17.98	20,872.0	4,458.5 JAPAN	Finance
8729-JP	Sony Financial Holdings Inc.	1,598.0	1,653.0	6,094.5	-352.00	-18.05	16,659.1	2,655.1 JAPAN	Finance
8354-JP	Fukuoka Financial Group, Inc.	426.0	432.0	3,148.0	-97.00	-18.55	50,785.0	8,254.5 JAPAN	Finance
8308-JP	Resona Holdings, Inc.	468.7	465.8	9,175.5	-106.80	-18.56	149,335.7	30,913.8 JAPAN	Finance
8381-JP	San-in Godo Bank Ltd.	706.0	721.0	981.0	-166.00	-19.04	4,714.0	894.2 JAPAN	Finance
8334-JP	Gunma Bank, Ltd.	534.0	533.0	2,127.2	-126.00	-19.09	19,053.0	3,878.5 JAPAN	Finance
8331-JP	Chiba Bank, Ltd.	602.0	623.0	4,623.0	-146.00	-19.52	53,023.0	9,251.0 JAPAN	Finance
8341-JP	77 Bank, Ltd.	440.0	446.0	1,448.8	-125.00	-22.12	15,633.0	3,273.5 JAPAN	Finance
8327-JP	Nishi-Nippon City Bank, Ltd.	218.0	220.0	1,485.6	-65.00	-22.97	42,150.0	9,942.5 JAPAN	Finance
8303-JP	Shinsei Bank, Limited	157.0	157.0	3,659.8	-52.00	-24.88	288,815.0	48,447.0 JAPAN	Finance
CS-US	Credit Suisse Group AG Sponsored ADR	14.8	16.7	32,668.7	-2.48	-14.32	20,488.3	4,203.3 SWITZERL	Finance
CSGN-CH	Credit Suisse Group AG	14.7	16.5	32,097.1	-2.77	-15.83	77,385.5	12,716.0 SWITZERL	Finance
LEON-CH	Leonteq AG	90.2	117.4	1,856.9	-31.70	-26.00	782.3	66.2 SWITZERL	Finance
2175-JP	SMS Co., Ltd.	1,922.0	2,082.0	739.2	-781.00	-28.89	5,283.3	578.6 JAPAN	Health Services
GLPG-NL	Galapagos NV	41.9	42.0	1,812.2	-6.09	-12.69	1,526.8	232.7 BELGIUM	Health Technology
532300-IN	Wockhardt Limited	1,021.9	1,146.6	1,860.0	-233.30	-18.59	1,767.4	189.6 INDIA	Health Technology
4548-JP	Seikagaku Corporation	1,470.0	1,660.0	824.3	-217.00	-12.86	1,788.8	344.1 JAPAN	Health Technology
7732-JP	Topcon Corporation	1,094.0	1,125.0	1,030.6	-558.00	-33.78	17,316.2	3,626.0 JAPAN	Health Technology

FDS Ticker Symbol	Company Name	Current Price 2/04/16	Closing Price 2/03/16	Sec Market Value (USD) > \$500MM	Net Chg	% Chg	Total CVol	Average of Daily Volume	Country Primary Listing	FactSet Econ Sector
SKBN-IL	Shikun & Binui Ltd	5.3	5.2	531.2	-0.84	-13.79	12,866.7	1,294.6	ISRAEL	Industrial Services
GISS-QA	Gulf International Services QSC	34.9	38.7	1,976.0	-7.95	-18.57	4,674.8	625.8	QATAR	Industrial Services
5406-JP	Kobe Steel, Ltd.	96.0	96.0	2,964.7	-14.00	-12.73	320,798.0	60,660.0	JAPAN	Non-Energy Minerals
5444-JP	Yamato Kogyo Co., Ltd.	2,513.0	2,435.0	1,396.6	-467.00	-15.67	5,114.6	943.9	JAPAN	Non-Energy Minerals
5726-JP	Osaka Titanium Technologies Co., Ltd.	1,721.0	1,722.0	537.1	-450.00	-20.73	4,296.2	748.1	JAPAN	Non-Energy Minerals
4042-JP	Tosoh Corporation	468.0	466.0	2,567.9	-76.00	-13.97	52,226.0	15,466.0	JAPAN	Process Industries
7240-JP	NOK Corporation	1,907.0	1,961.0	2,877.7	-442.00	-18.82	7,713.3	2,007.1	JAPAN	Process Industries
ANN-AU	Ansell Limited	14.8	18.7	2,039.2	-4.84	-24.64	8,298.3	629.1	AUSTRALIA	Producer Manufacturing
ATA-CA	Automation Tooling Systems Inc.	9.2	9.3	616.1	-1.55	-14.49	10,698.5	2,845.6	CANADA	Producer Manufacturing
GTT-FR	Gaztransport et technigaz SA	24.9	25.4	1,039.0	-9.07	-26.70	1,257.9	197.7	FRANCE	Producer Manufacturing
1685-HK	Boer Power Holdings Limited	11.2	11.1	1,099.2	-1.76	-13.58	9,148.0	1,692.6	HONG KONG	Producer Manufacturing
500093-IN	Crompton Greaves Limited	134.1	130.8	1,203.4	-33.75	-20.11	8,951.3	3,155.4	INDIA	Producer Manufacturing
9551-JP	METAWATER Co.Ltd.	2,322.0	2,317.0	509.1	-356.00	-13.29	1,957.5	226.1	JAPAN	Producer Manufacturing
6622-JP	Daihen Corporation	519.0	596.0	684.6	-83.00	-13.79	7,390.0	940.5	JAPAN	Producer Manufacturing
6486-JP	Eagle Industry Co., Ltd.	1,653.0	1,678.0	707.7	-273.00	-14.17	1,404.5	415.4	JAPAN	Producer Manufacturing
7296-JP	F.C.C.Co., Ltd.	2,140.0	2,168.0	967.3	-373.00	-14.84	3,540.7	470.8	JAPAN	Producer Manufacturing
7013-JP	IHI Corporation	191.0	197.0	2,582.7	-55.00	-22.36	208,439.0	36,414.5	JAPAN	Producer Manufacturing
007070-KR	GS Retail Co., Ltd.	53,700.0	62,300.0	3,934.3	-11,400.00	-17.51	2,511.0	229.5	SOUTH KOREA	Retail Trade
027410-KR	BGF Retail Co., Ltd.	175,000.0	219,000.0	4,449.7	-38,000.00	-17.84	893.0	102.1	SOUTH KOREA	Retail Trade
535648-IN	Just Dial Ltd.	575.1	568.4	588.4	-142.90	-19.90	4,663.4	859.9	INDIA	Technology Services
2327-JP	NS Solutions Corporation	2,239.0	2,367.0	2,126.5	-333.00	-12.95	4,696.2	815.6	JAPAN	Technology Services
3778-JP	SAKURA Internet Inc.	1,688.0	1,753.0	515.7	-312.00	-15.60	32,372.1	3,712.7	JAPAN	Technology Services
6702-JP	Fujitsu Limited	425.7	428.4	7,516.2	-83.70	-16.43	158,406.0	25,747.0	JAPAN	Technology Services
018260-KR	SAMSUNG SDS CO.LTD	206,500.0	201,000.0	12,755.6	-54,500.00	-20.88	3,356.7	538.9	SOUTH KOREA	Technology Services
WJA-CA	WestJet	16.1	16.4	1,289.5	-3.26	-16.85	4,882.3	1,459.0	CANADA	Transportation
532617-IN	Jet Airways (India) Limited	529.5	560.7	935.0	-96.95	-15.48	7,038.3	1,057.0	INDIA	Transportation
500285-IN	SpiceJet Limited	76.0	82.9	729.1	-14.30	-15.84	129,831.3	16,931.1	INDIA	Transportation
FUM1V-FI	Fortum Oyj	12.2	12.0	11,789.0	-2.10	-14.68	31,287.4	7,698.8	FINLAND	Utilities
532667-IN	Suzlon Energy Limited	14.4	14.9	1,093.9	-4.45	-23.61	150,578.4	44,678.1	INDIA	Utilities

Disclaimer: The information contained herein is privileged, confidential and protected from disclosure. Any unauthorized disclosure distribution, dissemination or copying of this material or any attachment is strictly prohibited; such information, whether derived from Vermilion Technical Research, LLC or from any oral or written communication by way of opinion, advice, or otherwise with a principal of the company is not warranted in any manner whatsoever, is for the use of our customers only and may be obtained from internal and external research sources considered to be reliable. It is not necessarily complete and its accuracy is not guaranteed by Vermilion Technical Research, LLC, its operating entity or the principals therein. Neither the information nor any opinion expressed constitutes a solicitation for the purchase of any future or security referred to in Vermilion research publications. Principals of Vermilion Technical Research, LLC may or may not hold, or be short of, securities discussed herein, or of any other securities, at any time. The foregoing also expressly applies to any trial subscription.