



VERMILION TECHNICAL RESEARCH

# Vermilion Screen & Chart Book

## Emerging Market Leaders

Emerging market stocks trading within 5% of a 52-week relative strength high

11/20/15

EM screen and chart book... Our EM Screen & Chart Book helps pinpoint leading emerging market stocks, weeding out lagging and stagnating trends. This is performed through a screen with a simple filter: only stocks trading within 5% of a 52-week relative strength high make the cut. From this list, we scan through each chart (daily, weekly and monthly timeframes) and highlight our favorites in the following pages.

Today's report contains both: (1) **actionable charts** (pages 2-21), and (2) **the screen** (pages 22-29).

### Screen Parameters:

- Market Cap > \$500mil (\$USD)
- Avg. daily trading volume > 50k
- Trading within 5% of a 52-week relative strength high (vs. MSCI EM Index)

### Notable themes:

- We're seeing an uptick in the number of attractive **semiconductor charts**, both in the U.S. and abroad. The EM semi scene is recovering following the mid-2015 sell-off in Asian markets. Attractive charts: Taiwan Semi (2330-TW), Powertech Technology (6239-TW), and Silicon Motion Technology (SIMO).
- **Oil refining/marketing stocks** continue to exhibit leadership trend. This is the one technically attractive spot in the energy sector. Attractive charts: Ultrapar Participacoes (UGPA3-BR), S-Oil (010950-KR), Petronas Dagangan (5681-MY), Thai Oil (TOP-TH), IRPC Public (IRPC-TH), and Motor Oil Corinth Refineries (MOH-GR).
- **Chemical stocks**, particularly Korean and Latin American, are inflecting higher. Attractive charts: Hanwha Chemical (009830-KR), LG Chem (051910-KR), Alpek (ALPEKA-MX), and Braskem (BRKM5-BR).
- **Health care** continues to hold as a leadership sector. Attractive charts: Chemical Works of Gedeon Richter (RICHT-HU), Celltrion (068270-KR), Taimed Biologics (4147-TW), and St. Shine Optical (1565-TW).
- **Mexican consumer staples stocks** are well-represented in today's screen. This is part of a larger theme, namely the technical improvements in the Mexico's equity market. Attractive charts: Grupo Bimbo (BIMBOA-MX), Grupo Lala (LALAB-MX), Coca-Cola FEMSA (KOFL-MX), Organization Cultiba (CULTIBAB-MX), and Kimberly-Clark de Mexico (KIMBERA-MX).
- **Hungary's equity market** is breaking out. Although a meager weighting in most EM indices, Hungary is fast developing as one of the better-looking charts (MSCI Hungary and BUX), and deserving of an overweight. Attractive charts: OTP Bank Nyrt (OTP-HU), Chemical Works of Gedeon Richter (RICHT-HU), and Magyar Telekom (MTEL-HU).

David P. Nicoski, CMT  
952-922-7502  
dave@vermilioncap.com

Shelley D. Moen, CMT  
952-922-7504  
shelley@vermilioncap.com

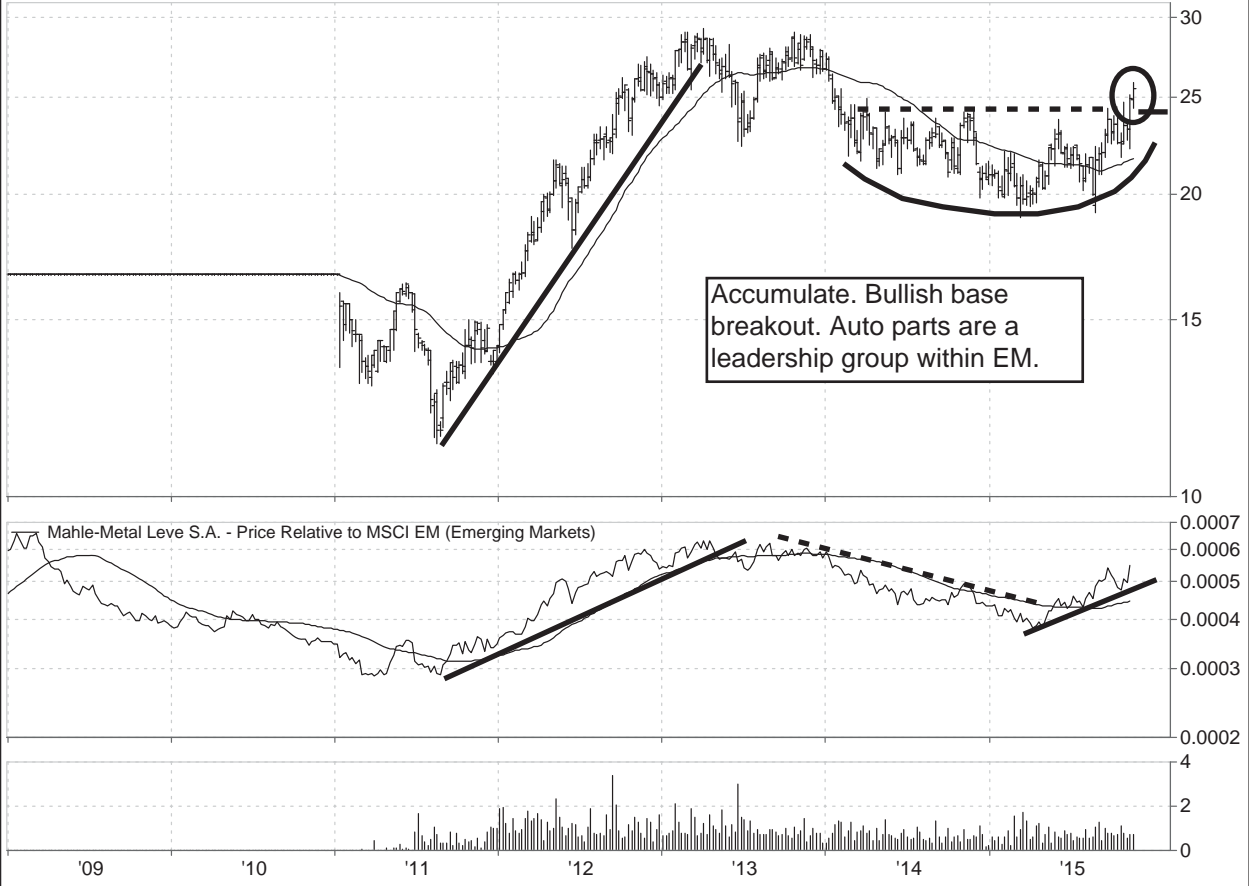
Joe W. Jasper, CFA  
952-922-7501  
joe@vermilioncap.com

John M. Betz, CMT  
952-922-7506  
john@vermilioncap.com

**Hyundai Mobis Co., Ltd**  
012330-KRX



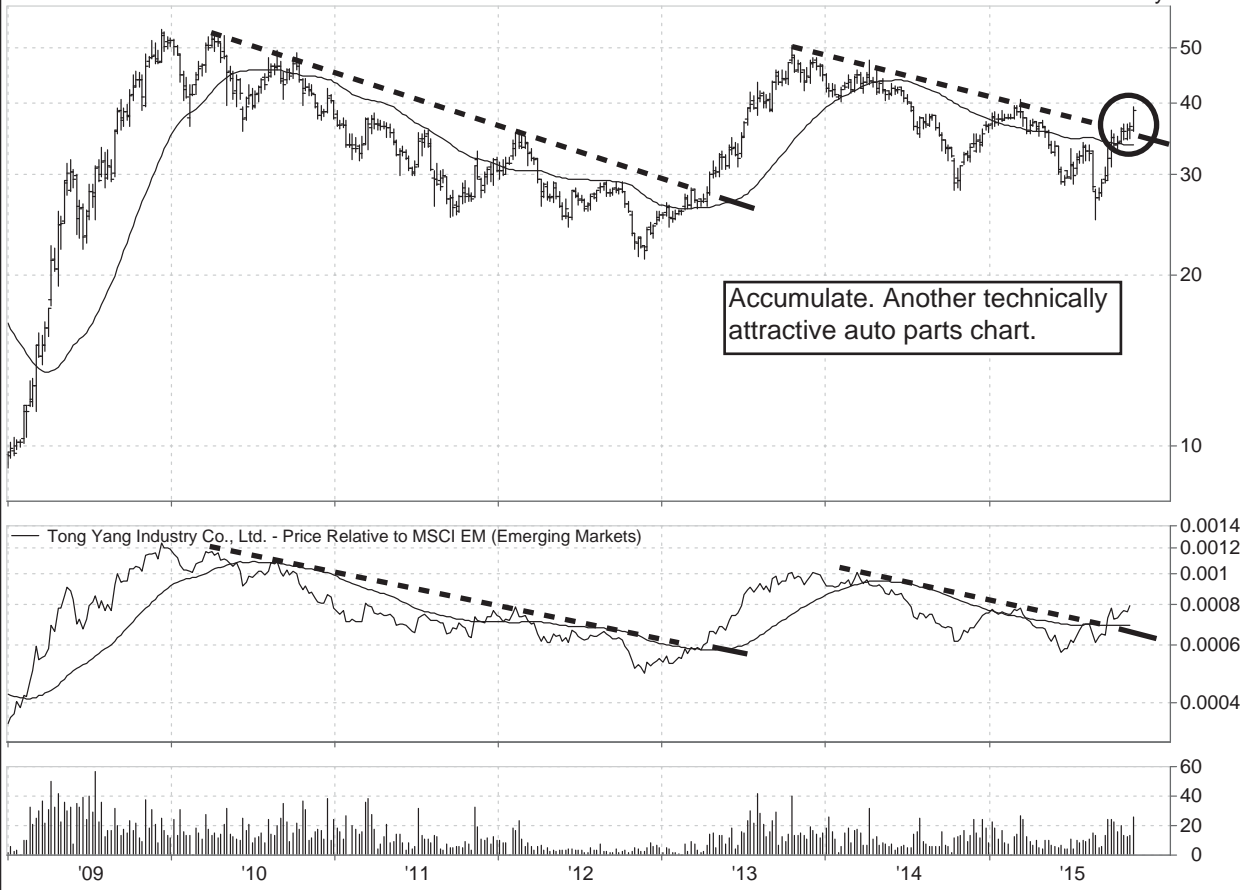
**Mahle-Metal Leve S.A.**  
LEVE3-BSP



### Tong Yang Industry Co., Ltd.

1319-TAI

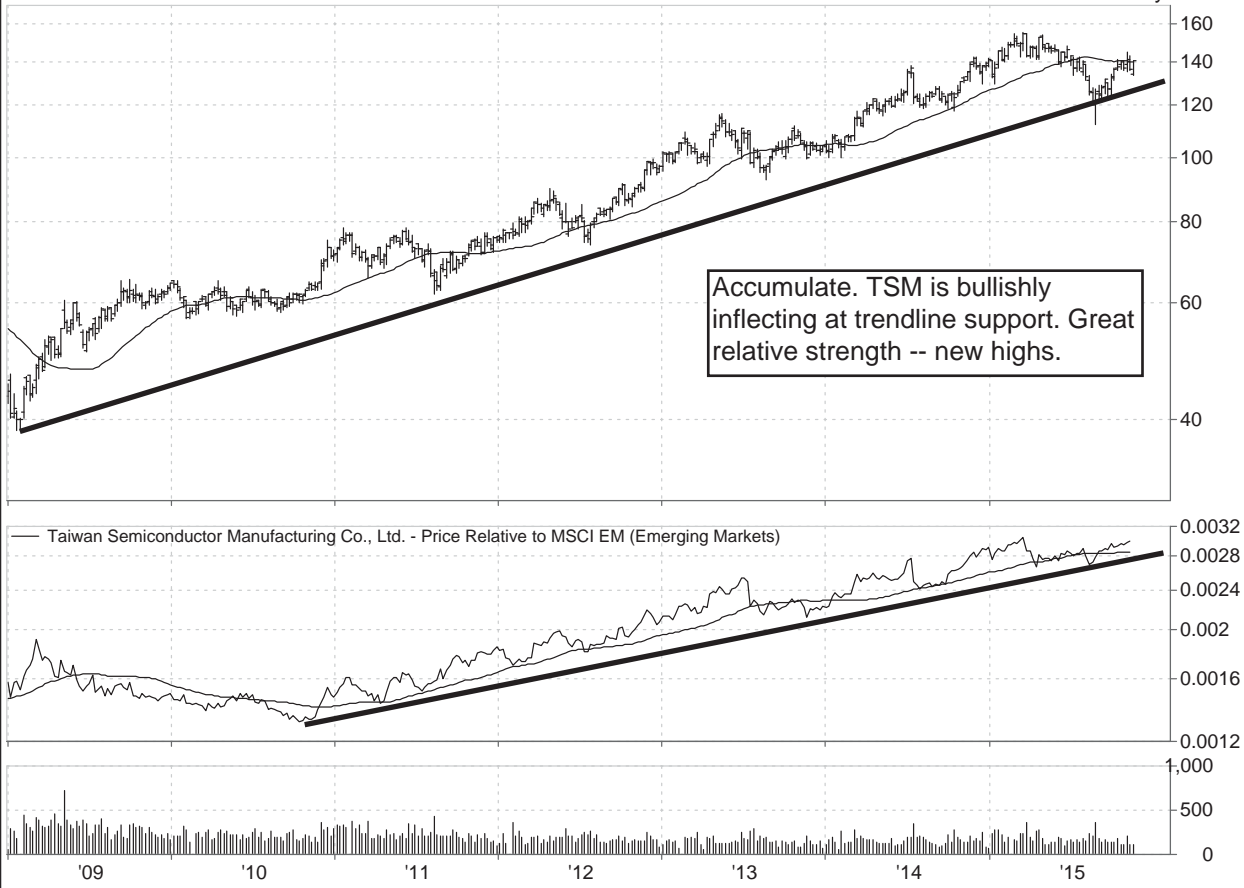
Local currency



### Taiwan Semiconductor Manufacturing Co., Ltd.

2330-TAI

Local currency



### Powertech Technology Inc.

6239-TAI

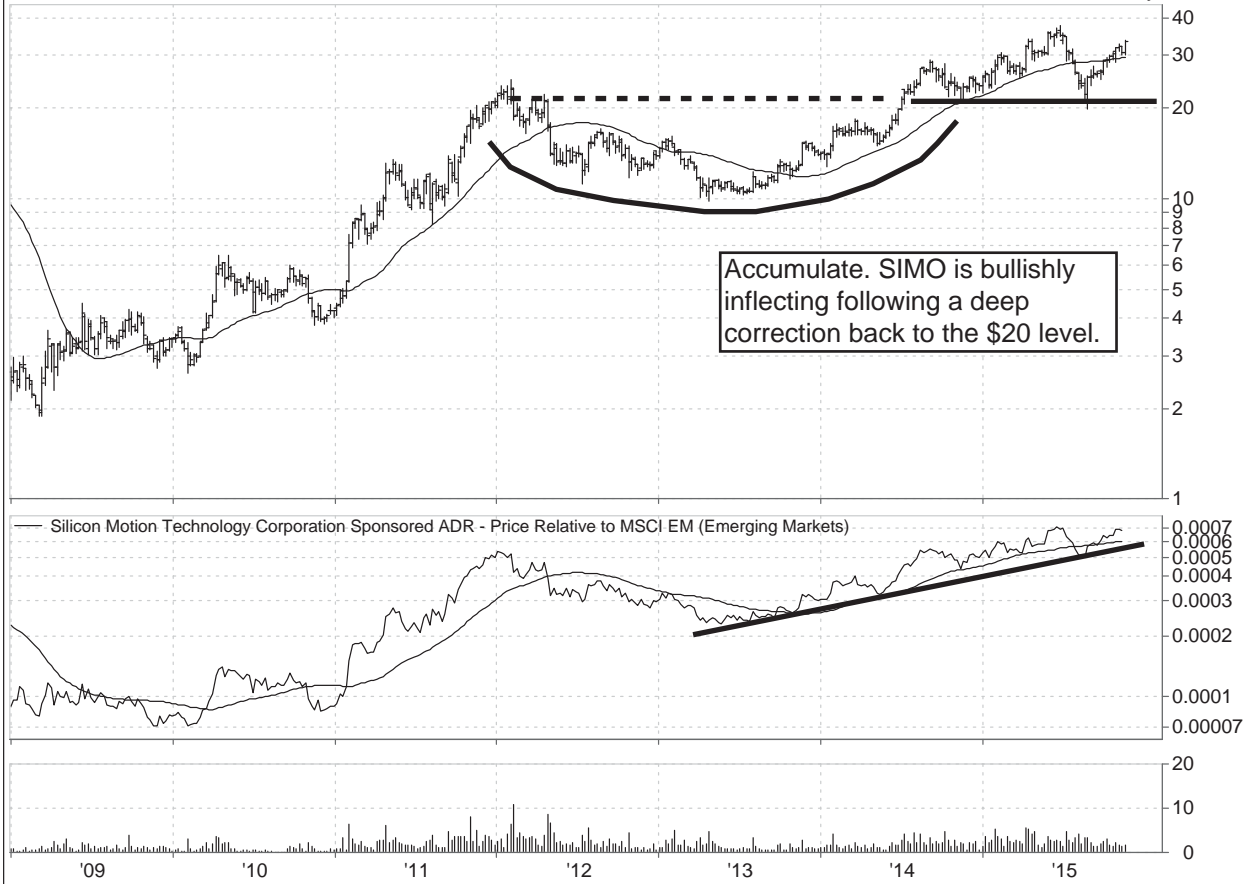
Local currency



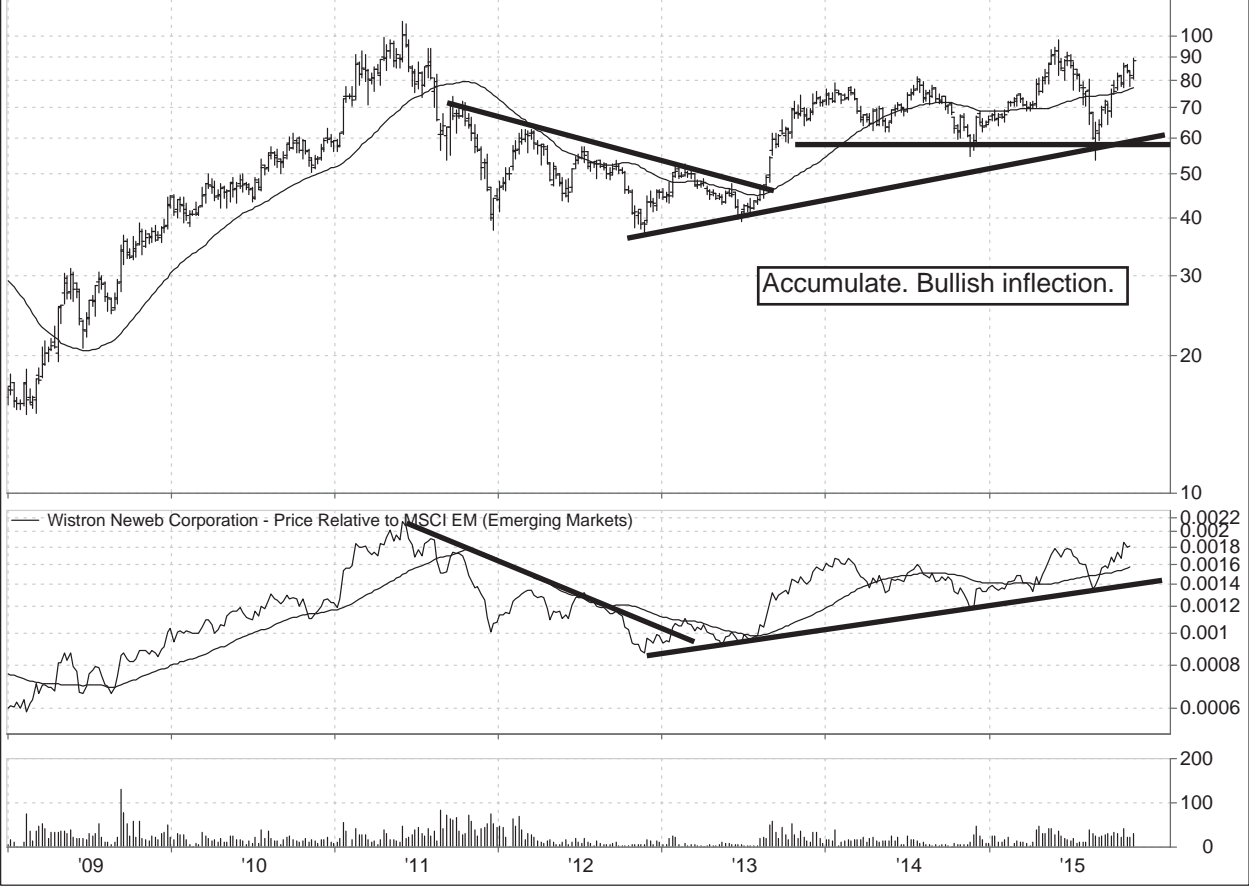
### Silicon Motion Technology Corporation Sponsored ADR

SIMO-USA

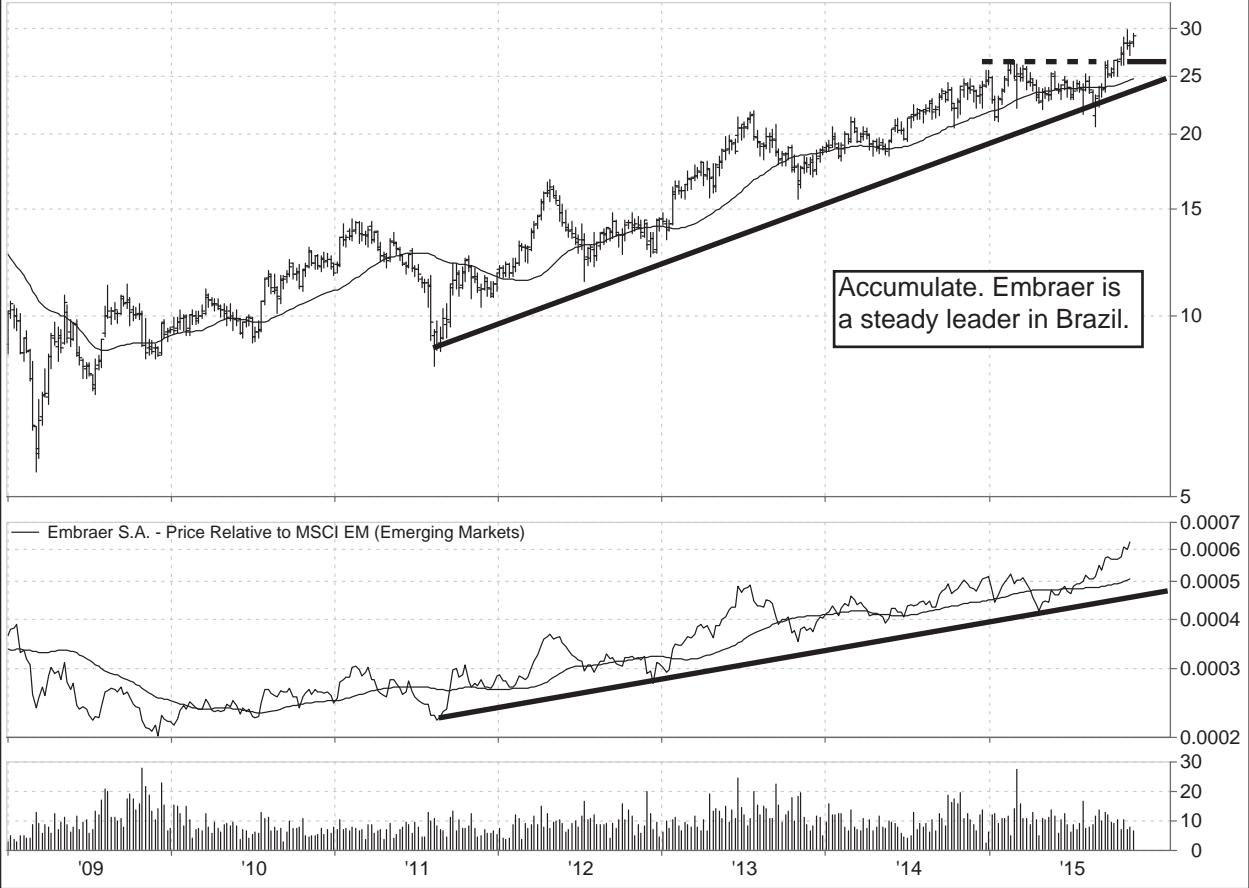
Local currency



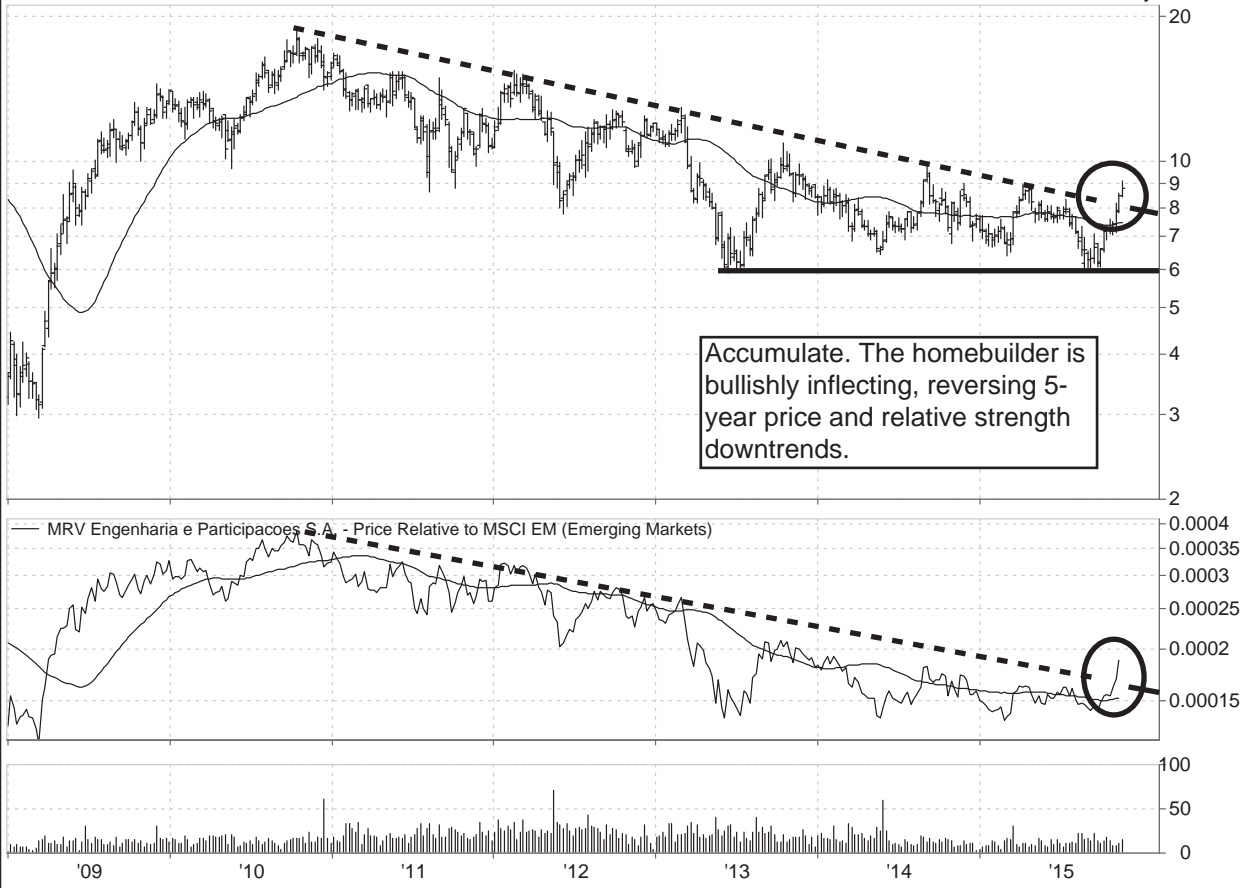
**Wistron Neweb Corporation**  
6285-TAI



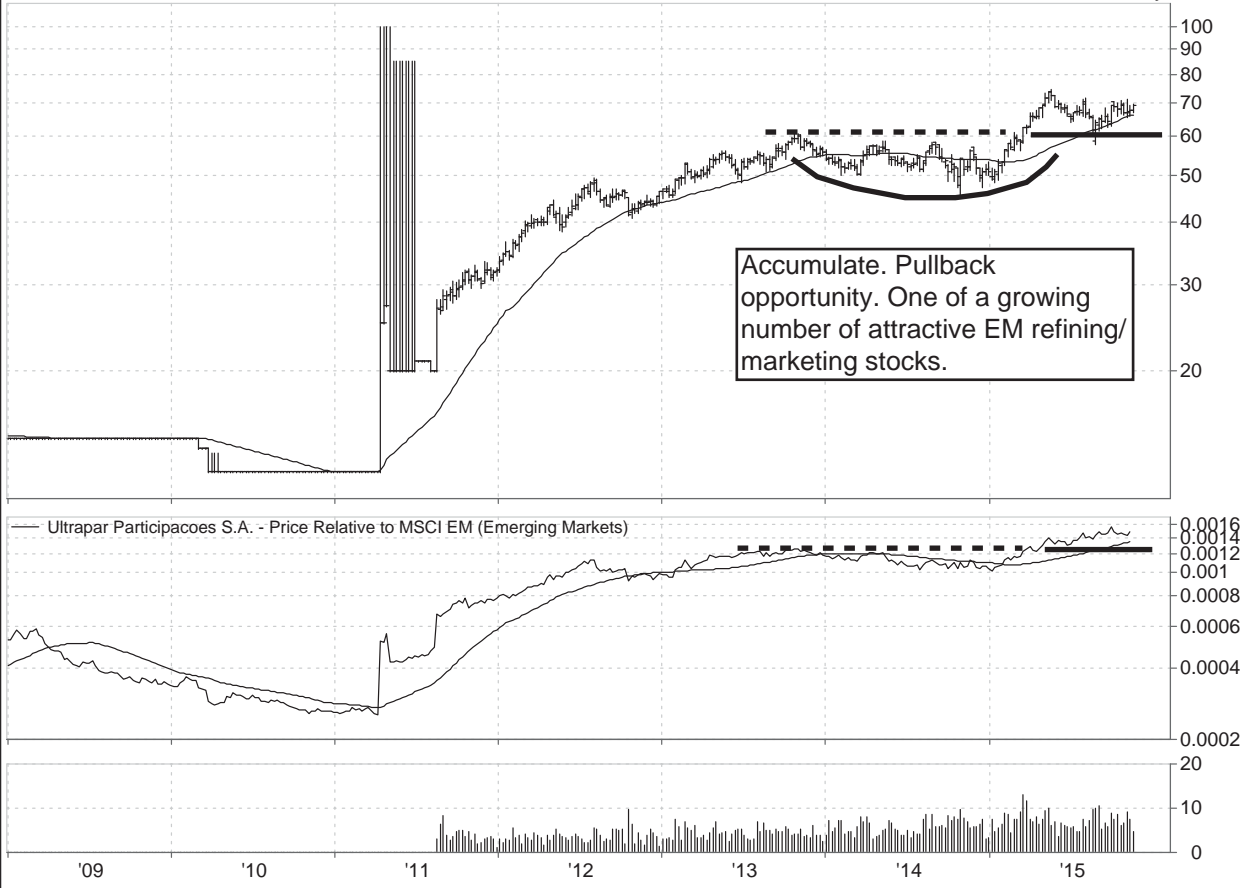
**Embraer S.A.**  
EMBR3-BSP



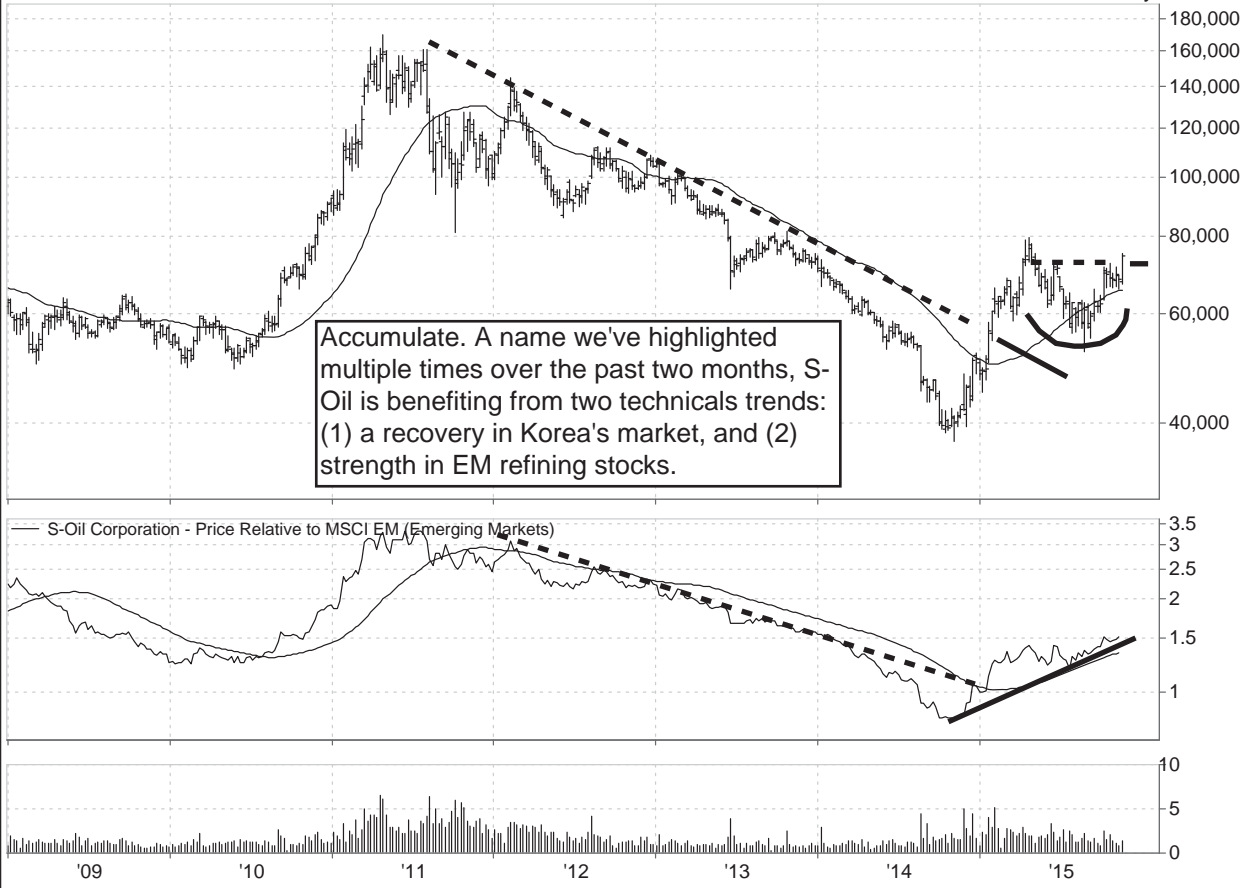
**MRV Engenharia e Participacoes S.A.**  
MRVE3-BSP



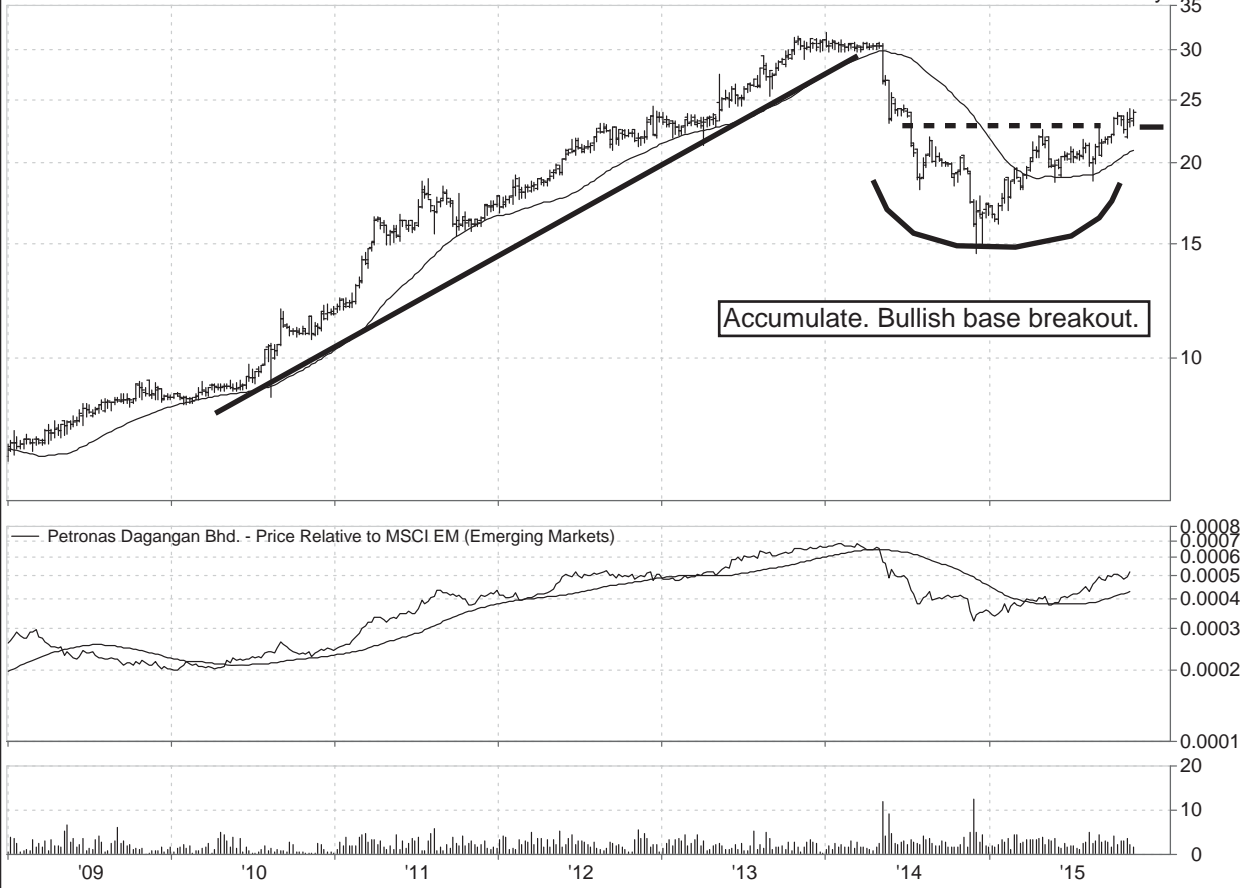
**Ultrapar Participacoes S.A.**  
UGPA3-BSP



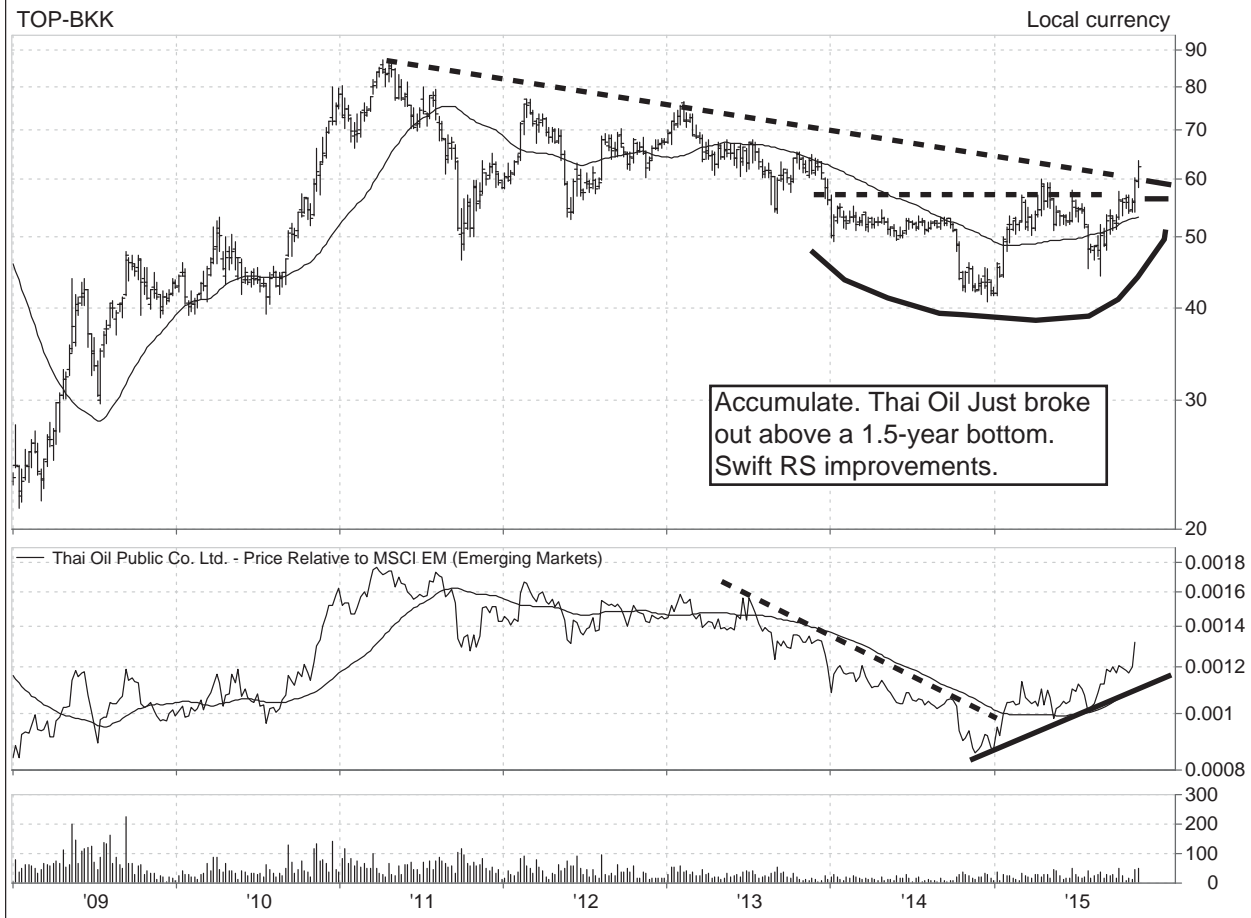
**S-Oil Corporation**  
010950-KRX



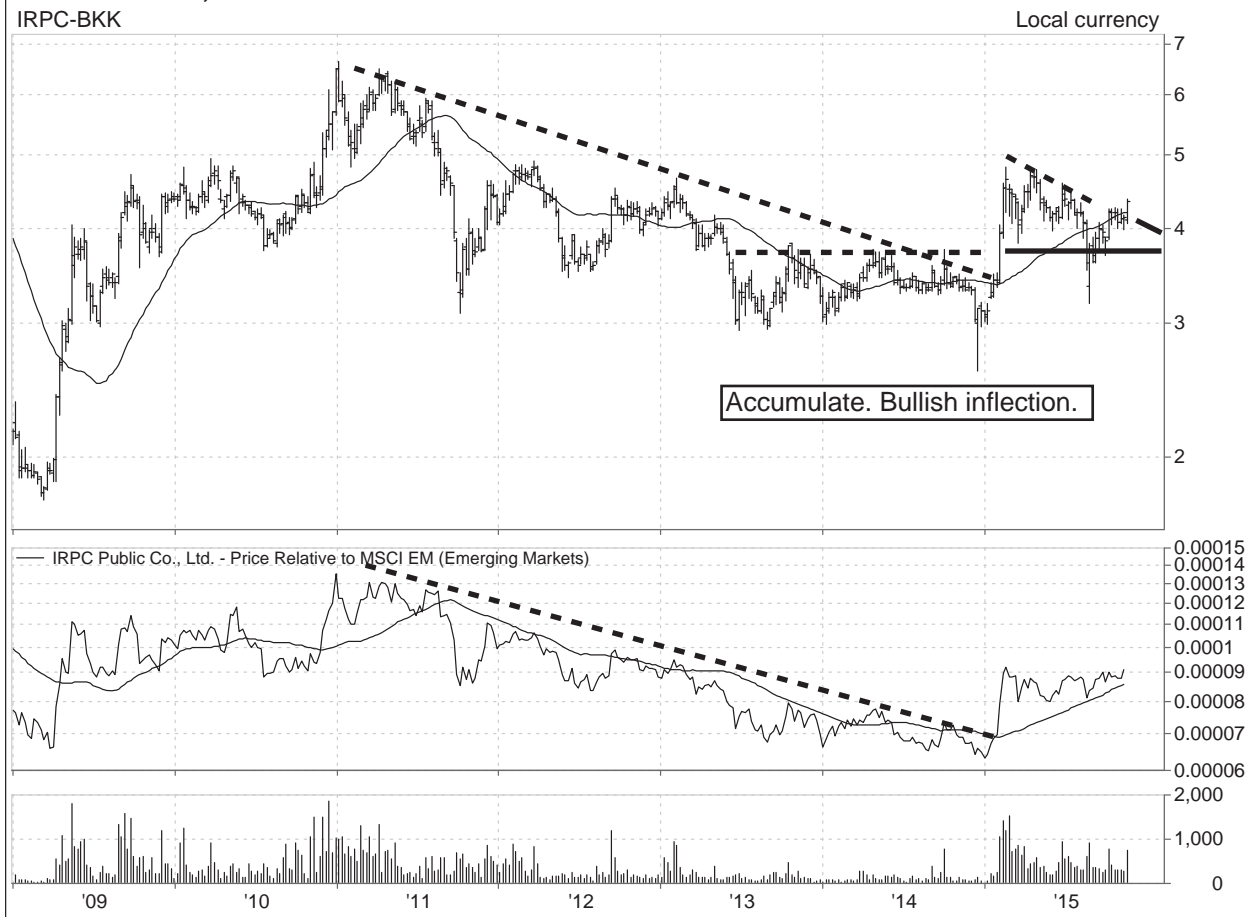
**Petronas Dagangan Bhd.**  
5681-KLS



**Thai Oil Public Co. Ltd.**  
TOP-BKK

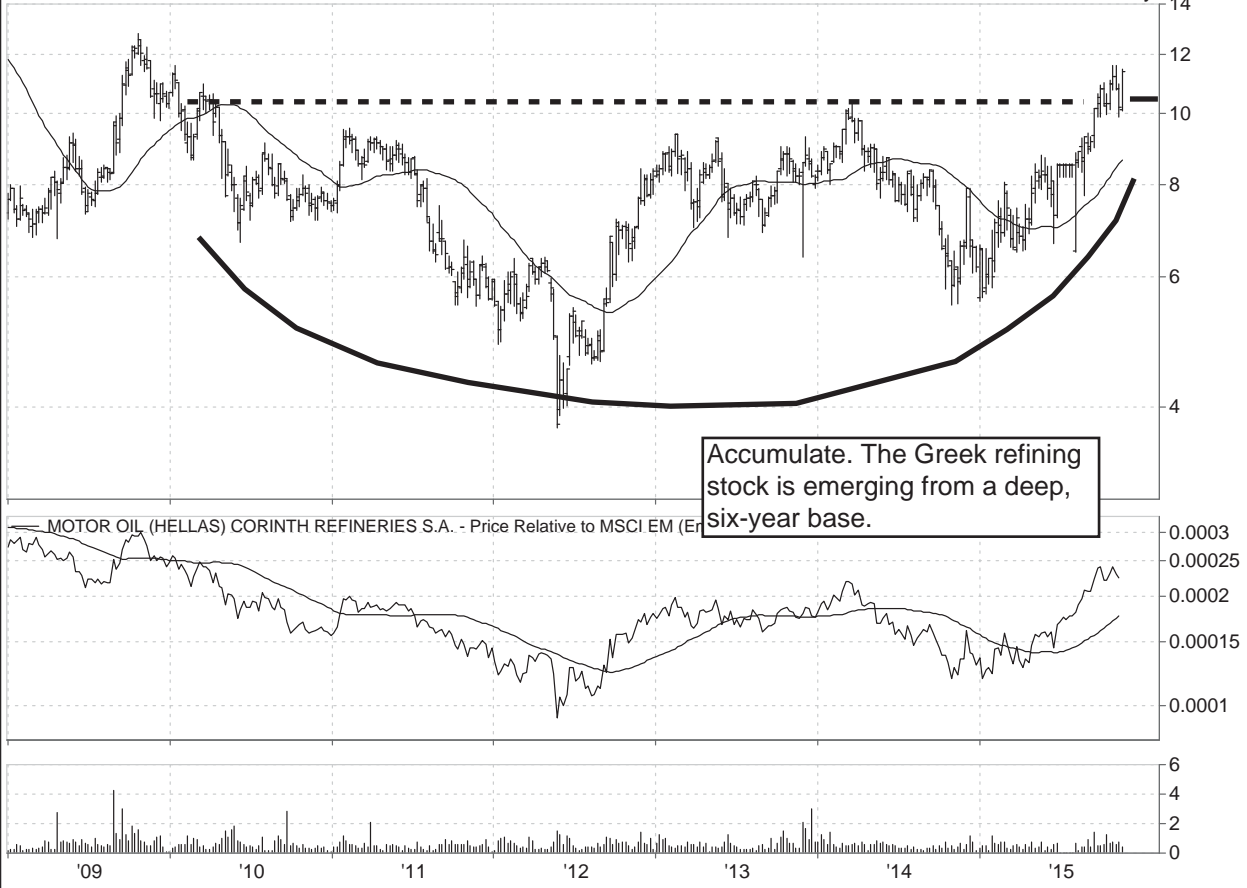


**IRPC Public Co., Ltd.**  
IRPC-BKK

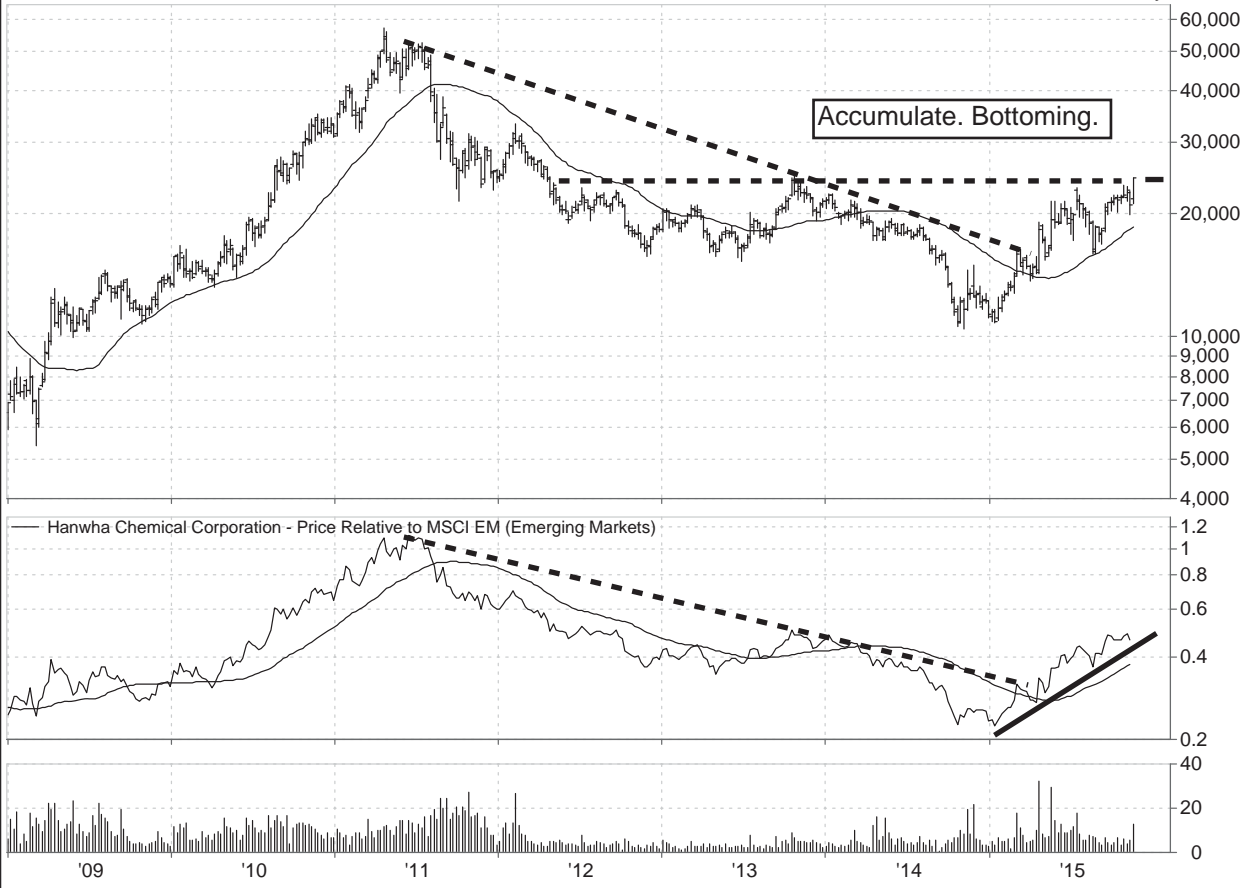




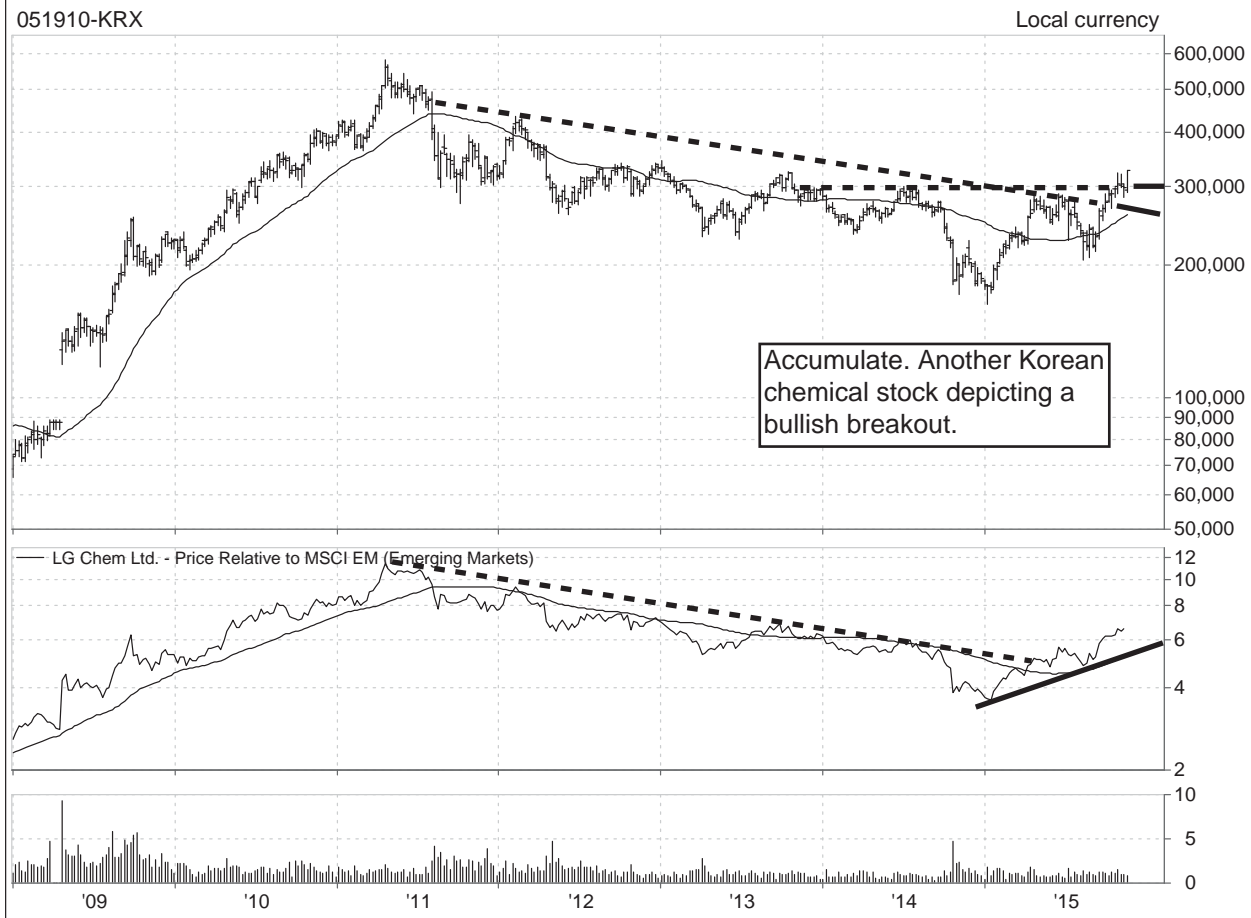
**MOTOR OIL (HELLAS) CORINTH REFINERIES S.A.**  
MOH-ATH



**Hanwha Chemical Corporation**  
009830-KRX



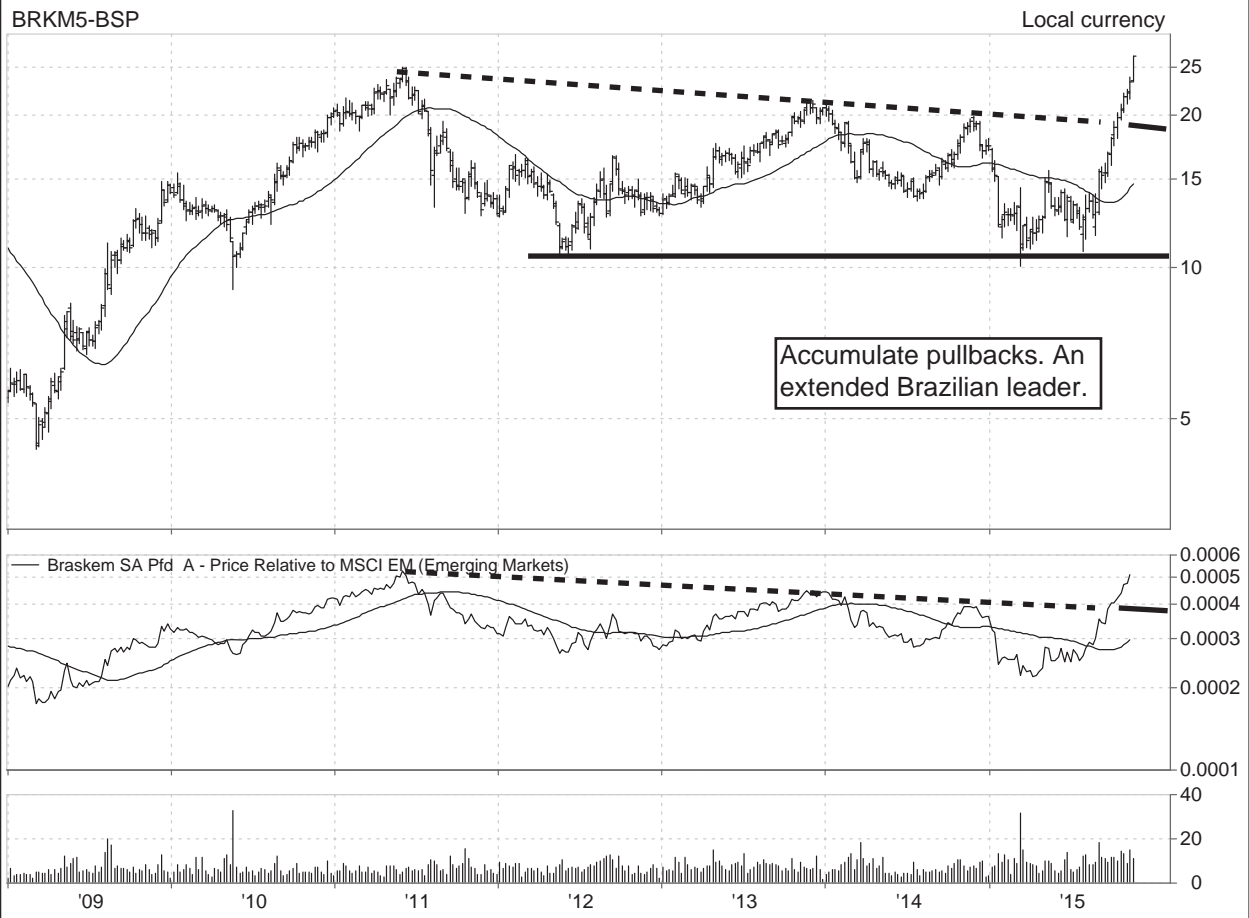
**LG Chem Ltd.**  
051910-KRX



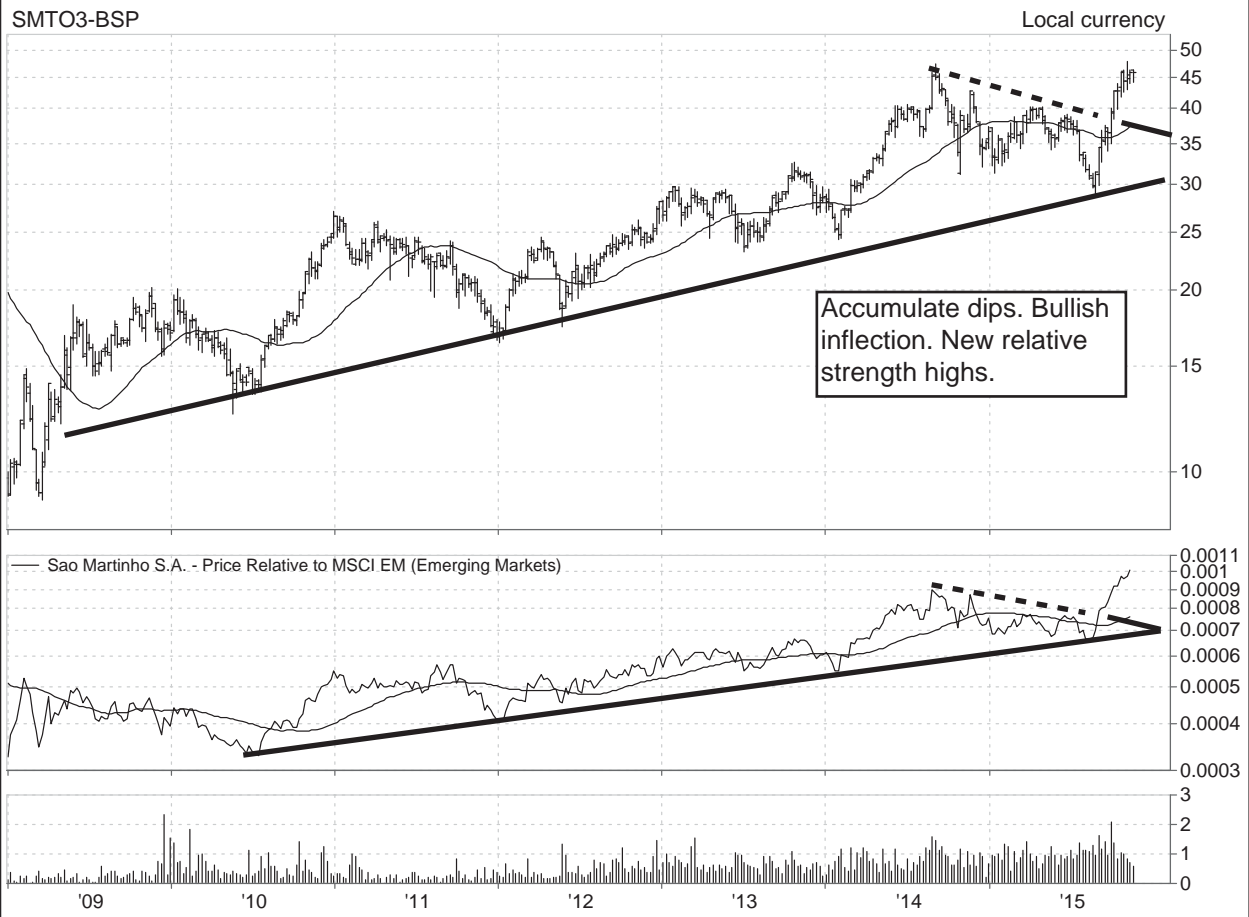
**Alpek, S.A.B. de C.V. Class A**  
ALPEKA-MEX



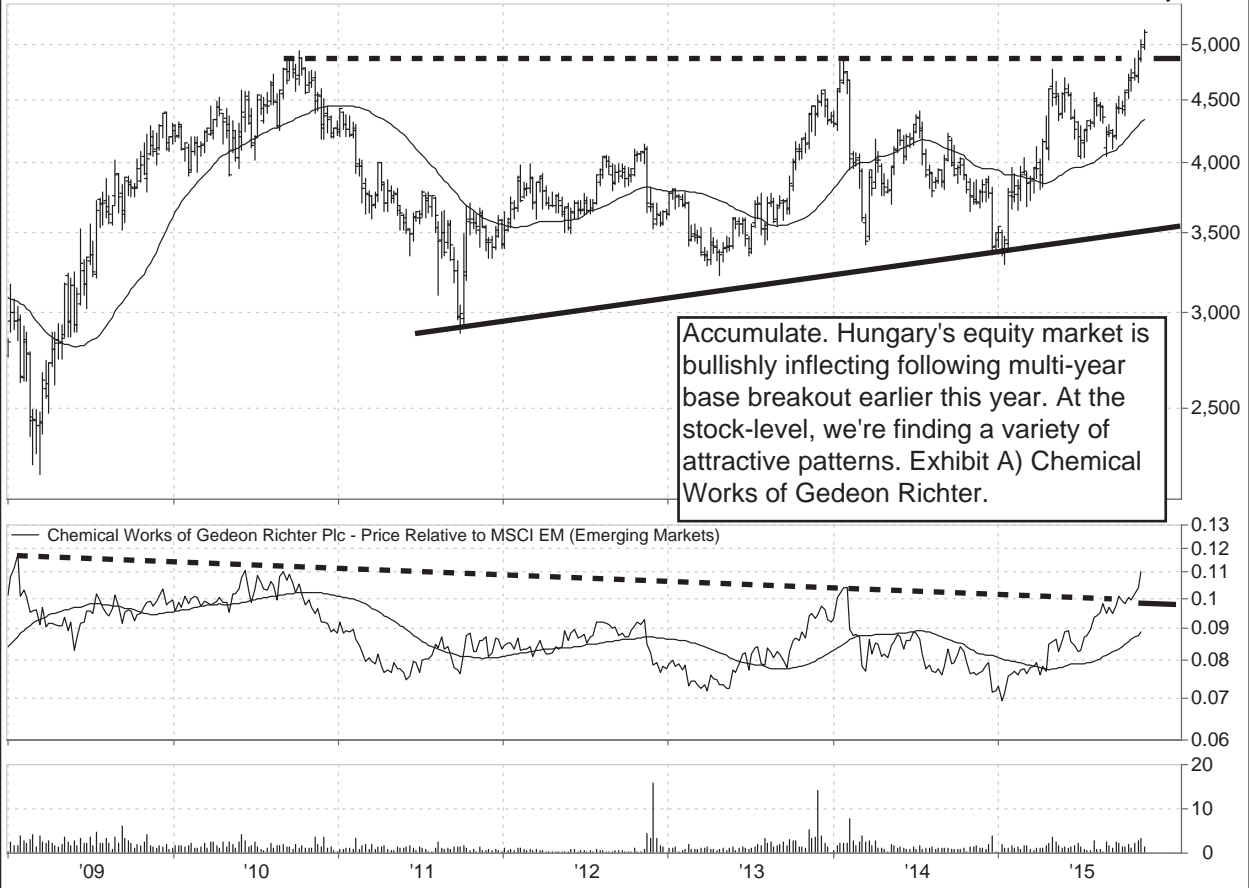
**Braskem SA Pfd A**  
BRKM5-BSP



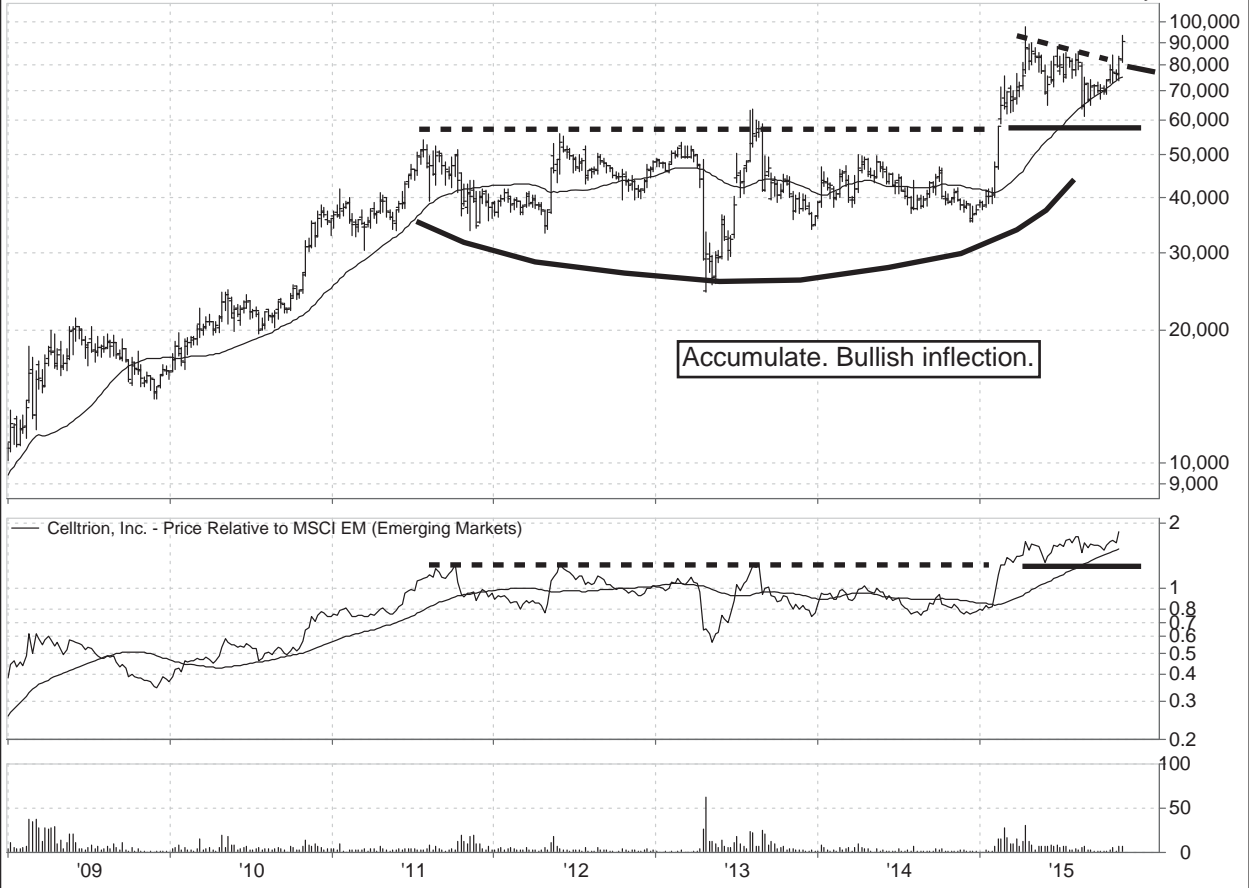
**Sao Martinho S.A.**  
SMTQ3-BSP



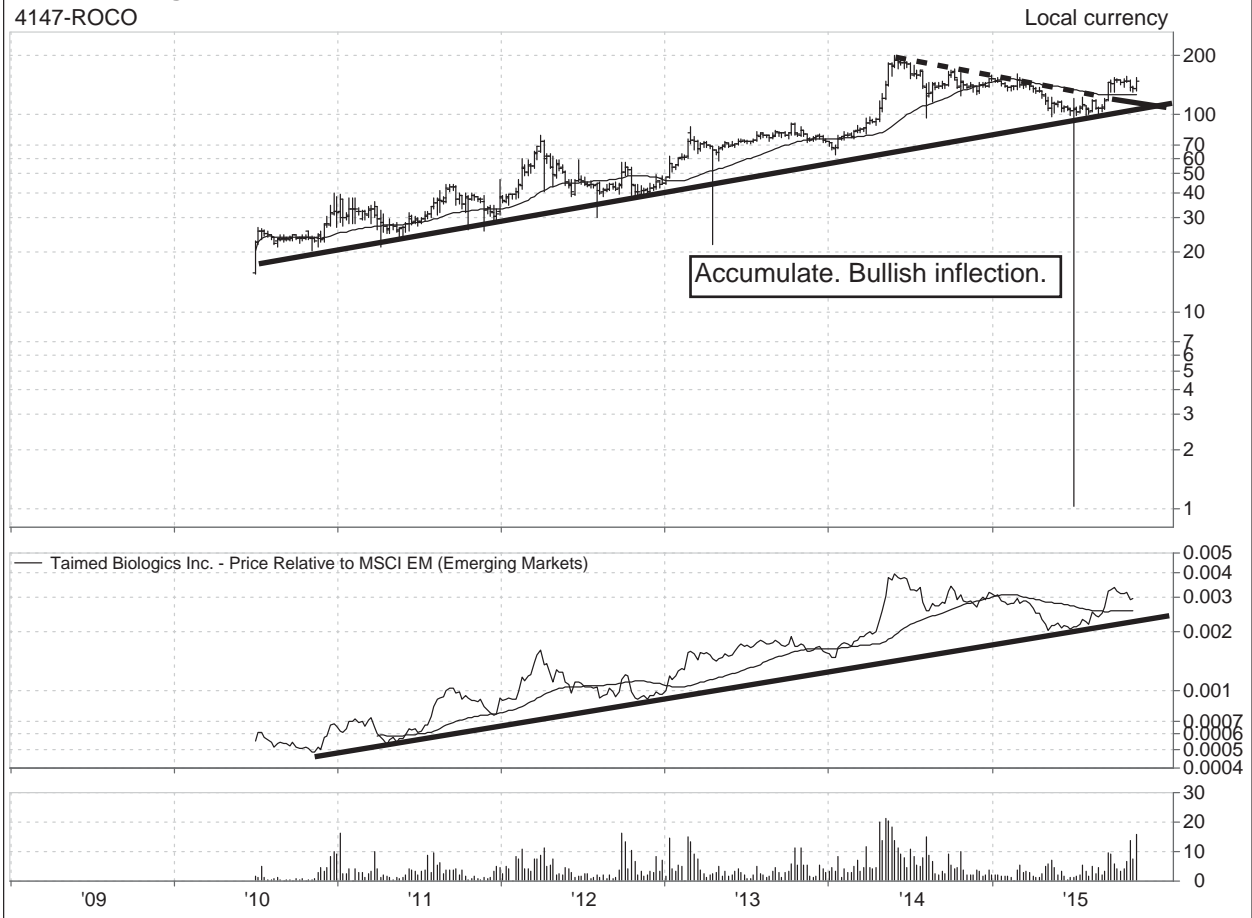
**Chemical Works of Gedeon Richter Plc**  
 RICHT-BUD



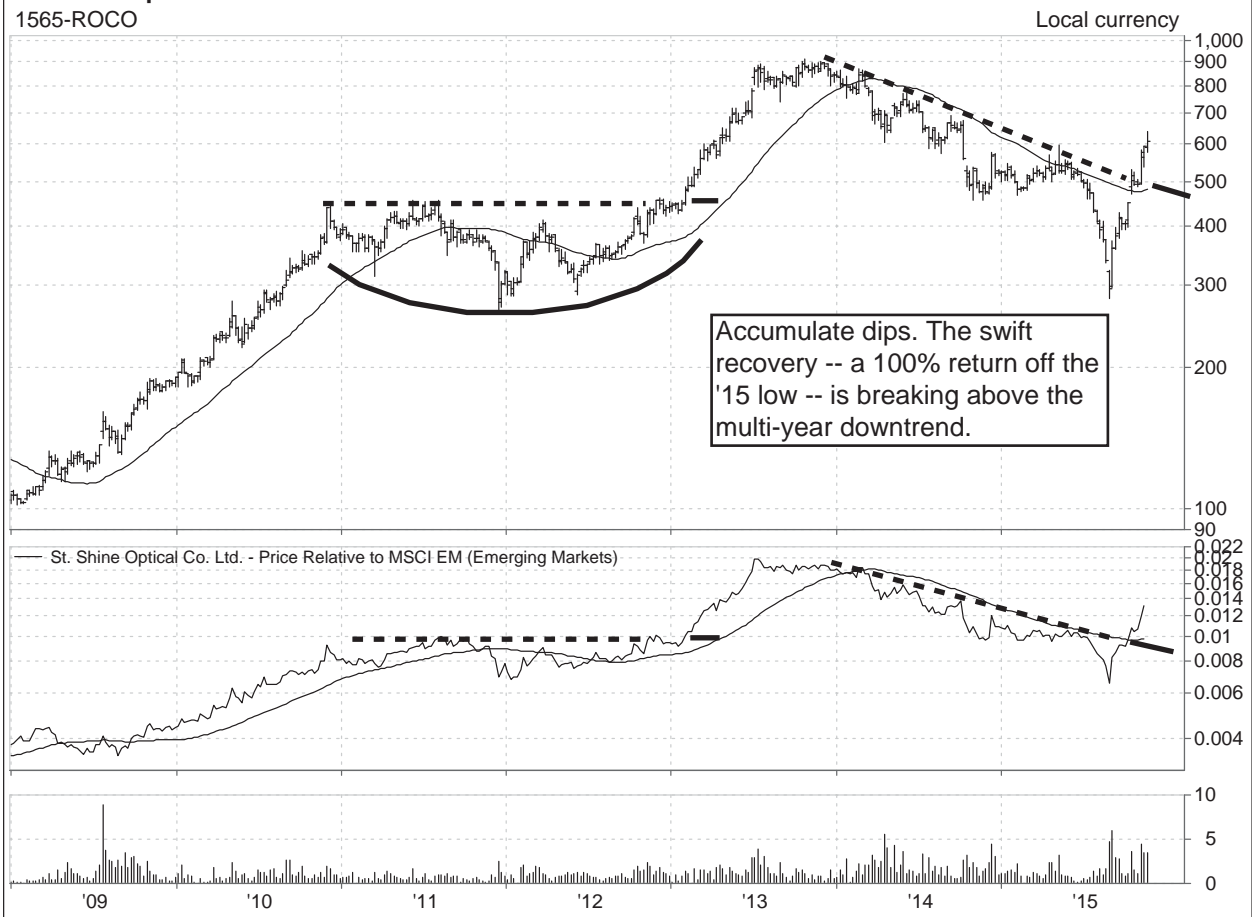
**Celltrion, Inc.**  
 068270-KRX



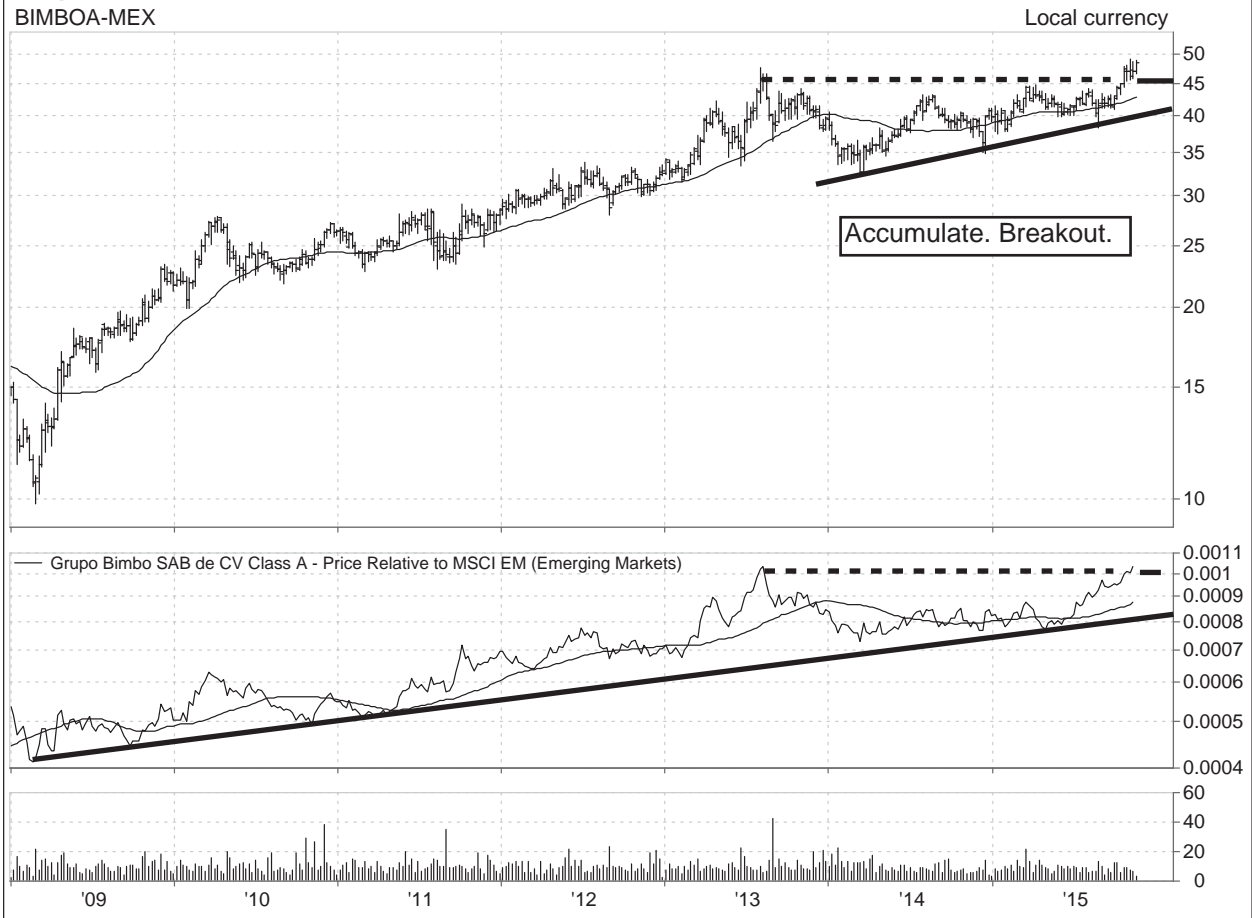
**Tamed Biologics Inc.**  
4147-ROCO



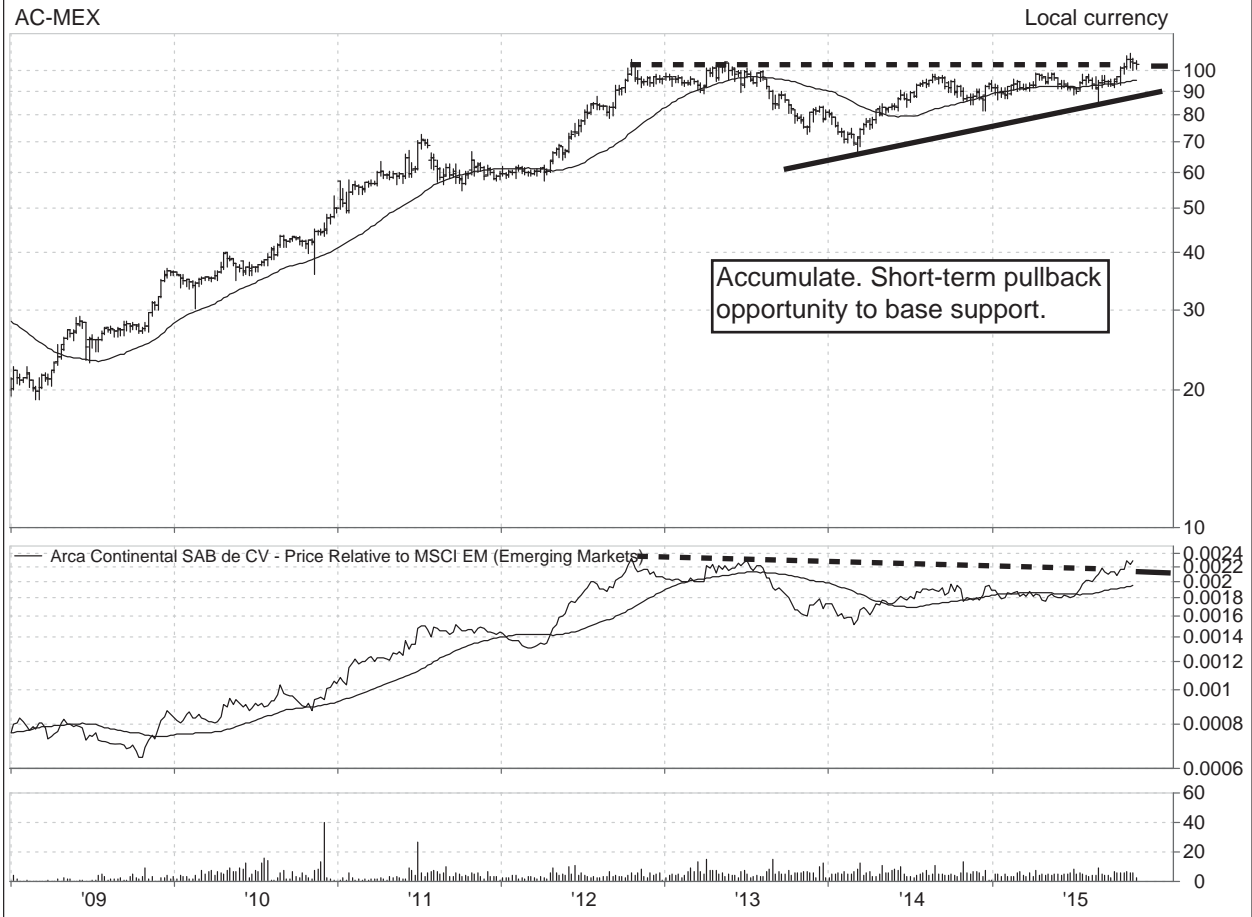
**St. Shine Optical Co. Ltd.**  
1565-ROCO



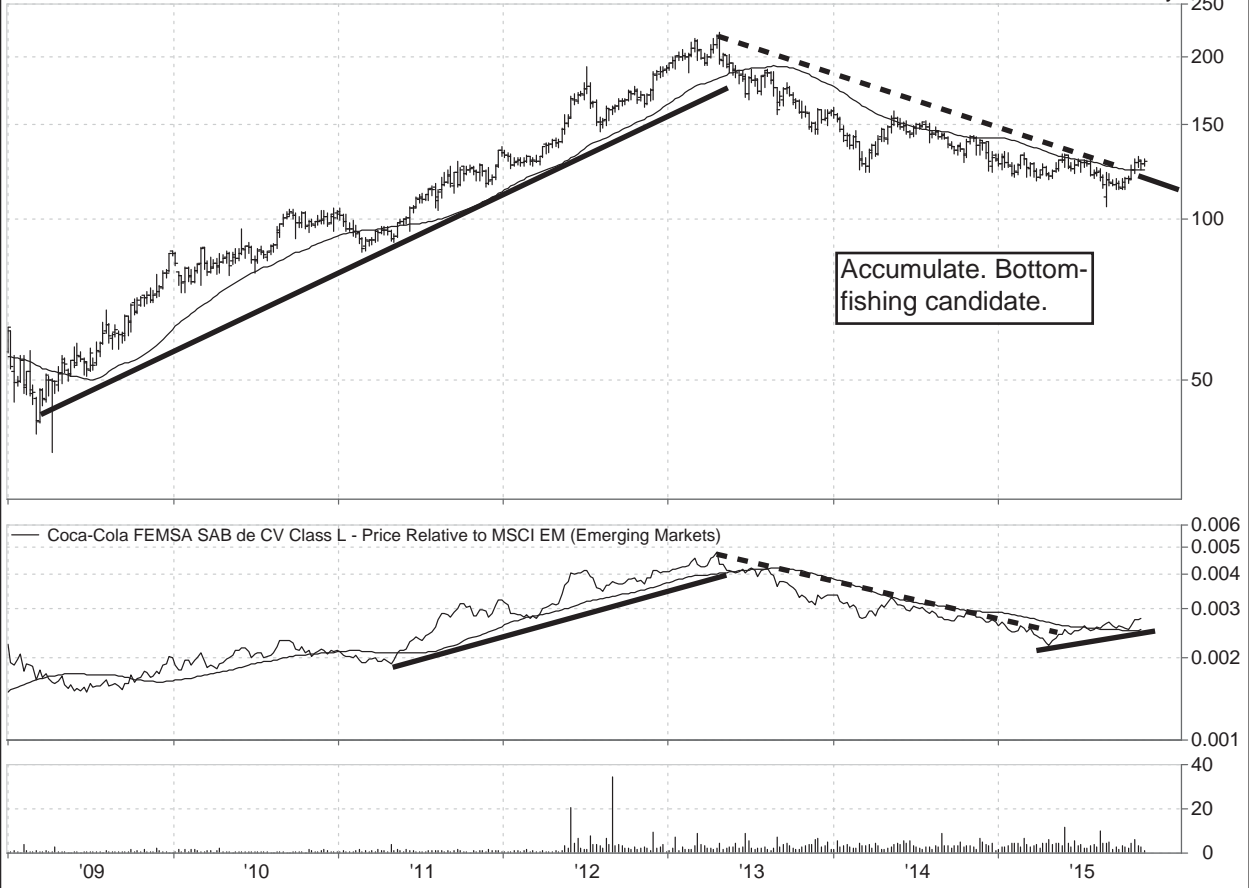
**Grupo Bimbo SAB de CV Class A**  
BIMBOA-MEX



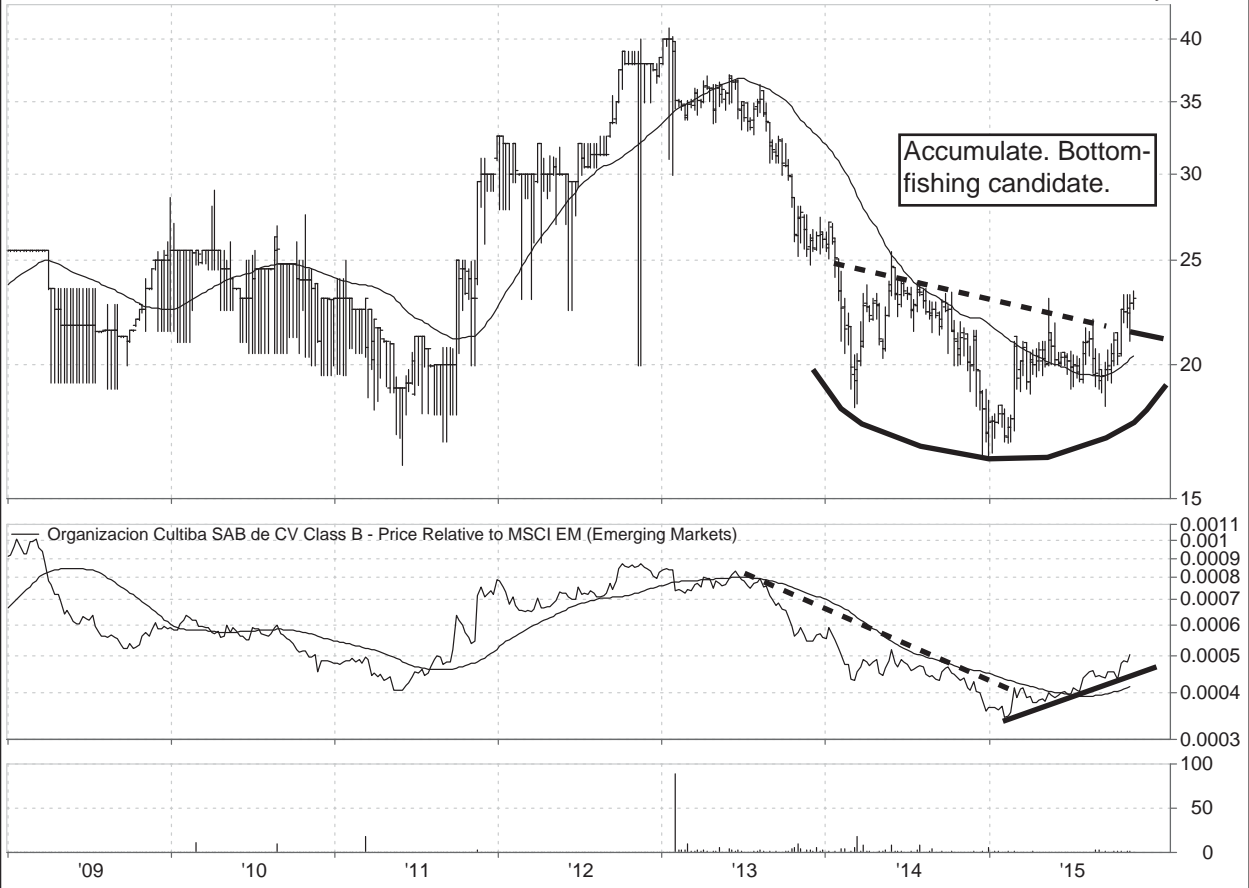
**Arca Continental SAB de CV**  
AC-MEX



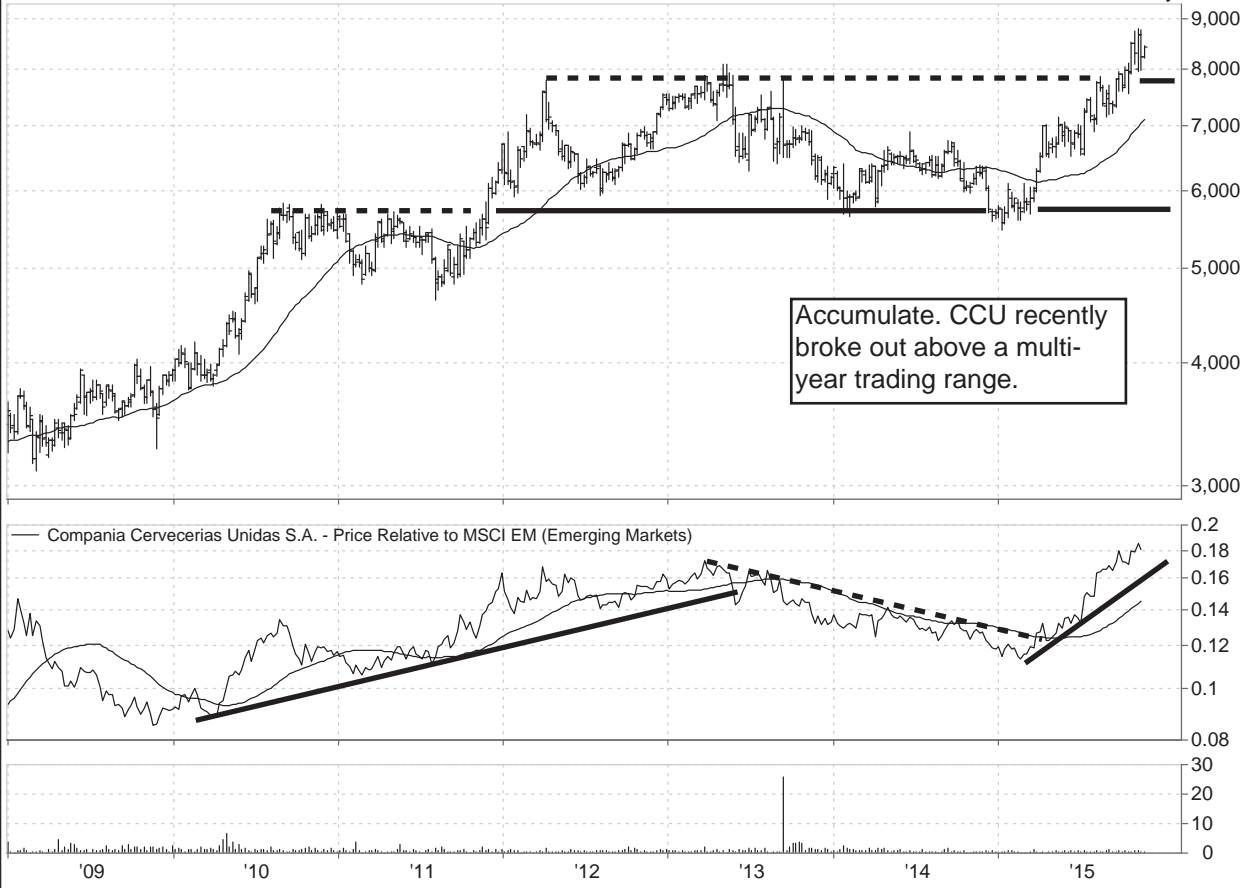
**Coca-Cola FEMSA SAB de CV Class L**  
KOFL-MEX



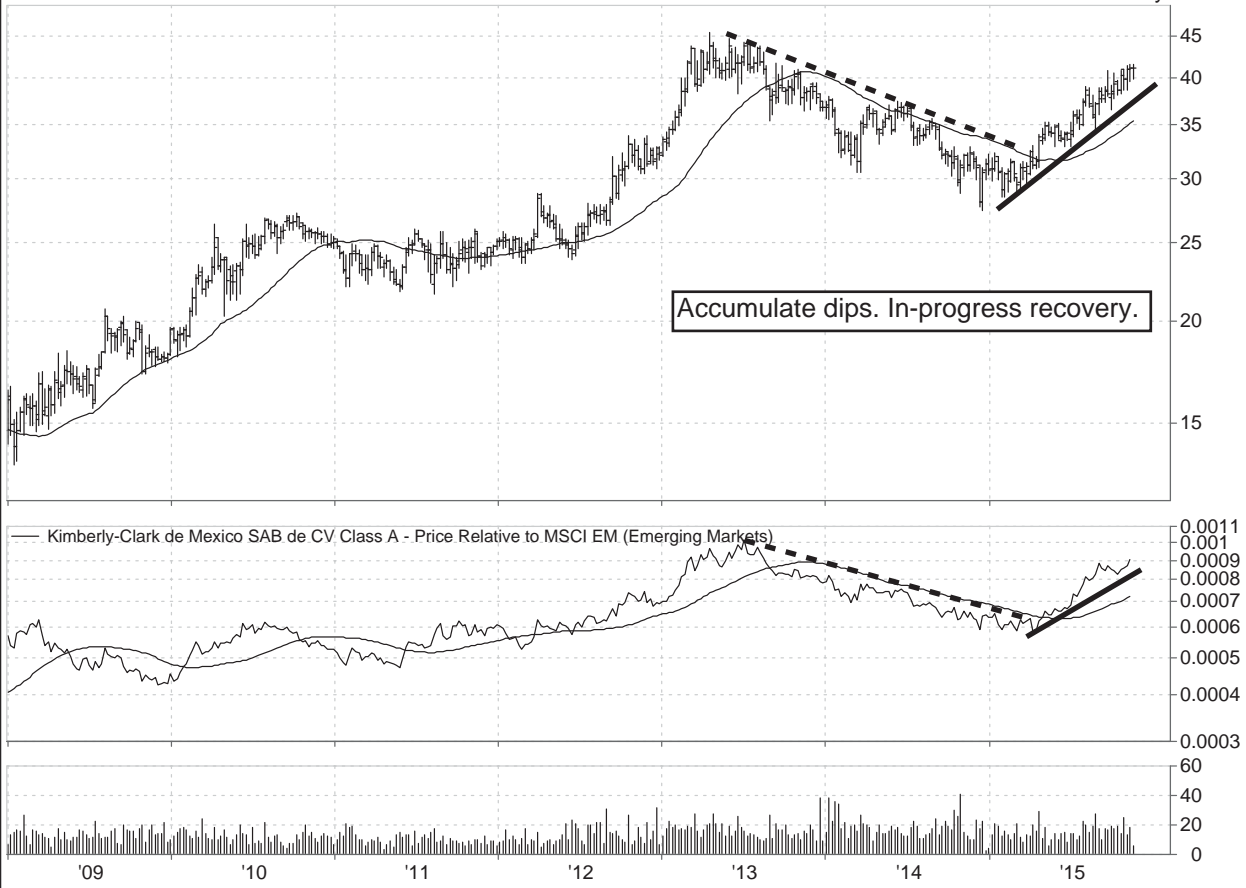
**Organizacion Cultiba SAB de CV Class B**  
CULTIBAB-MEX



**Compania Cervecerias Unidas S.A.**  
CCU-SGO



**Kimberly-Clark de Mexico SAB de CV Class A**  
KIMBERA-MEX

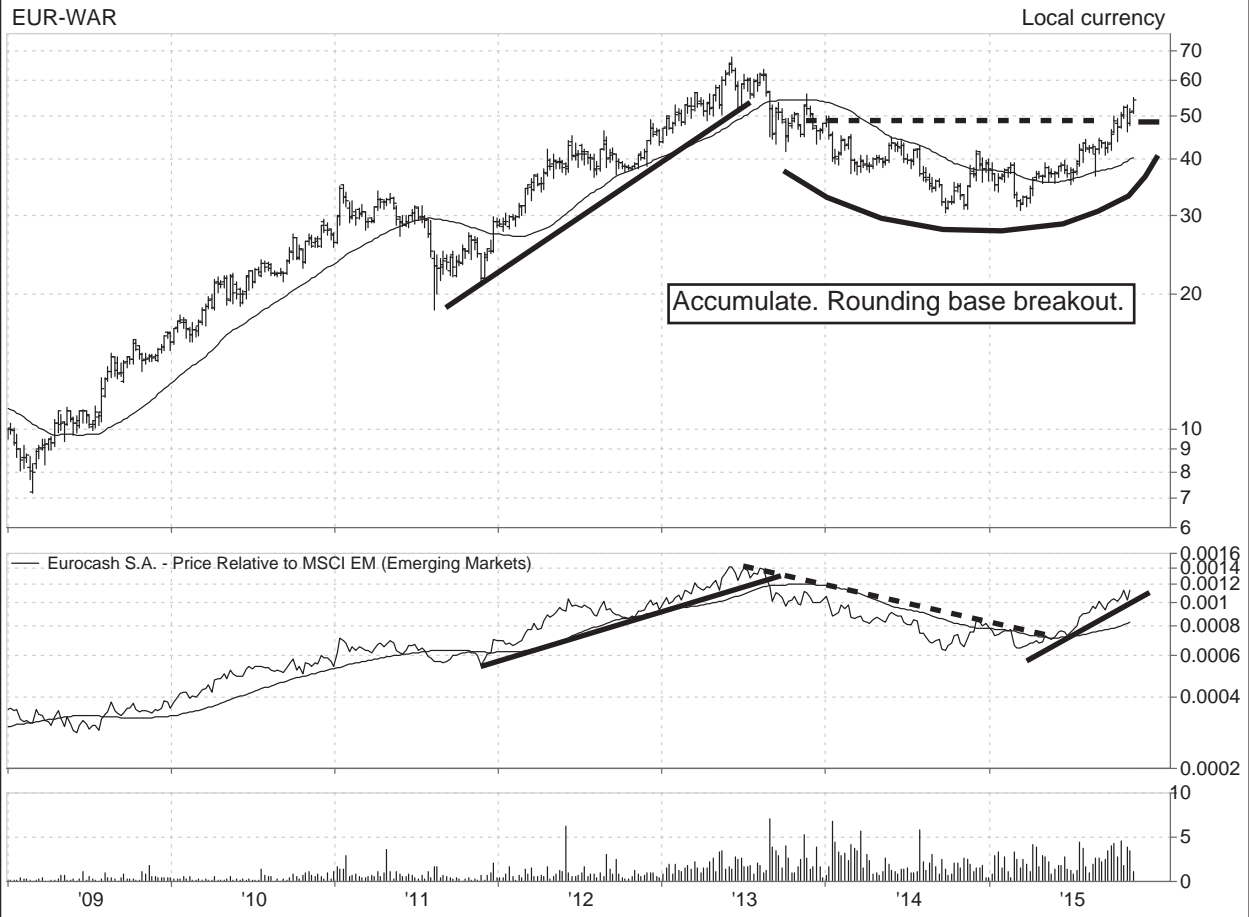




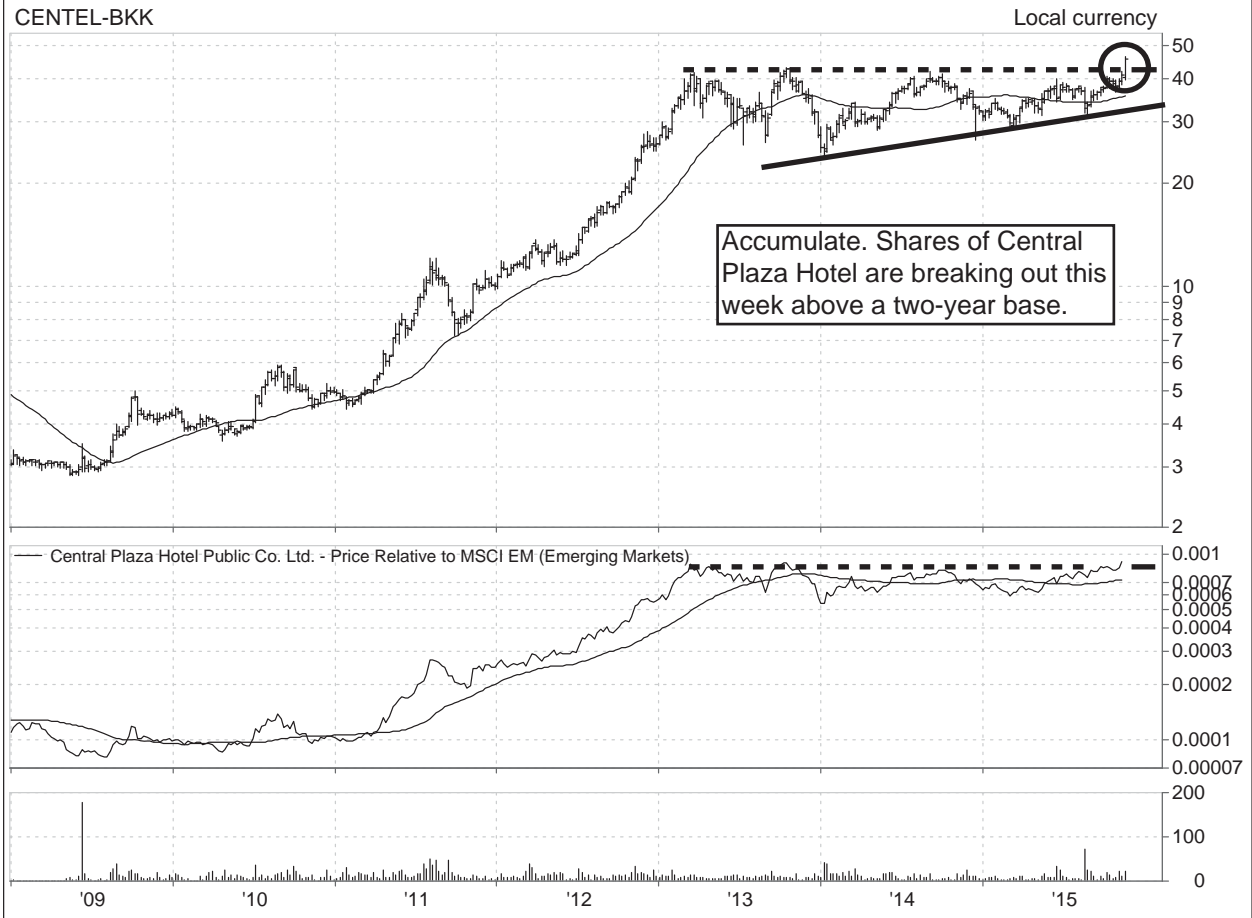
**Qatar Gas Transport Co.**  
QGTS-DSMD



**Eurocash S.A.**  
EUR-WAR



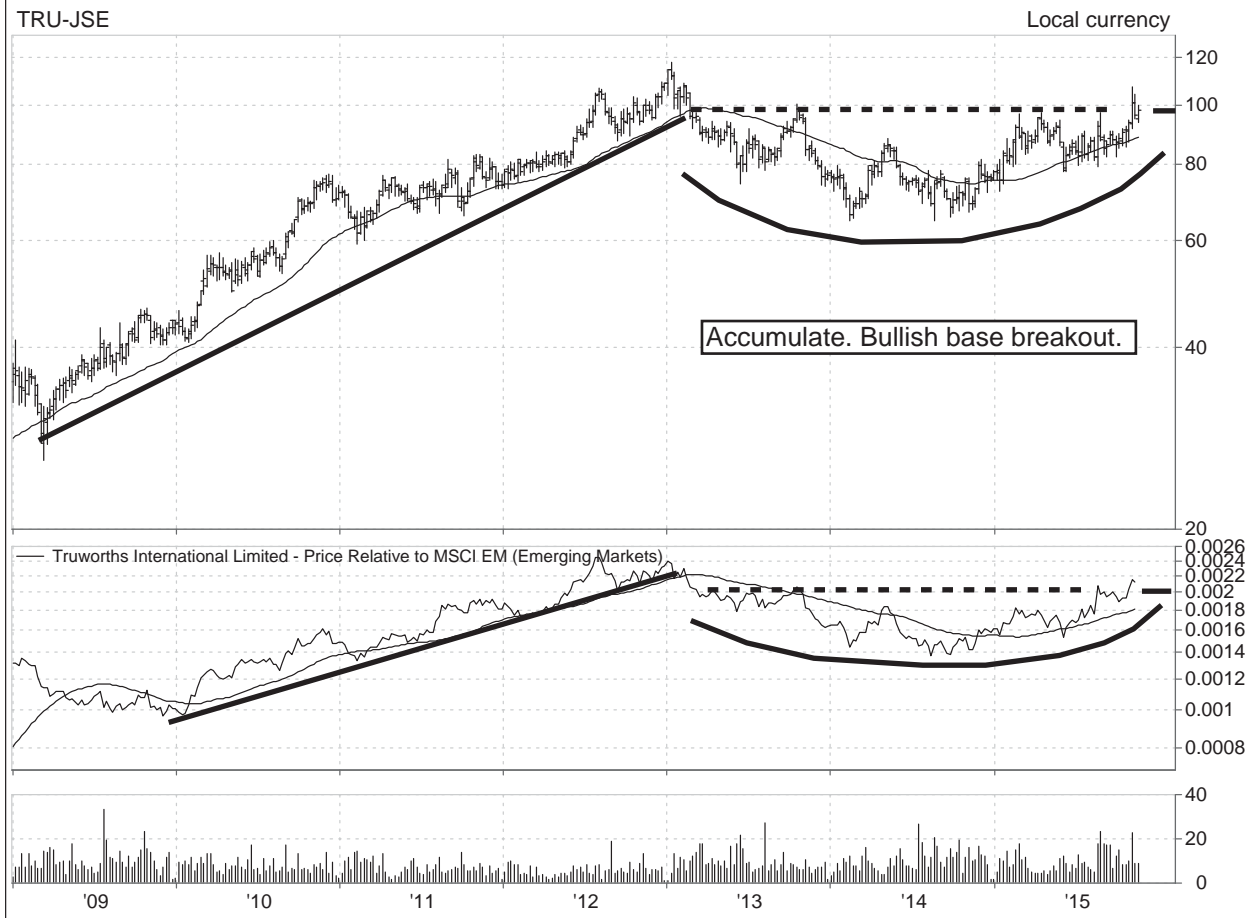
**Central Plaza Hotel Public Co. Ltd.**  
CENTEL-BKK



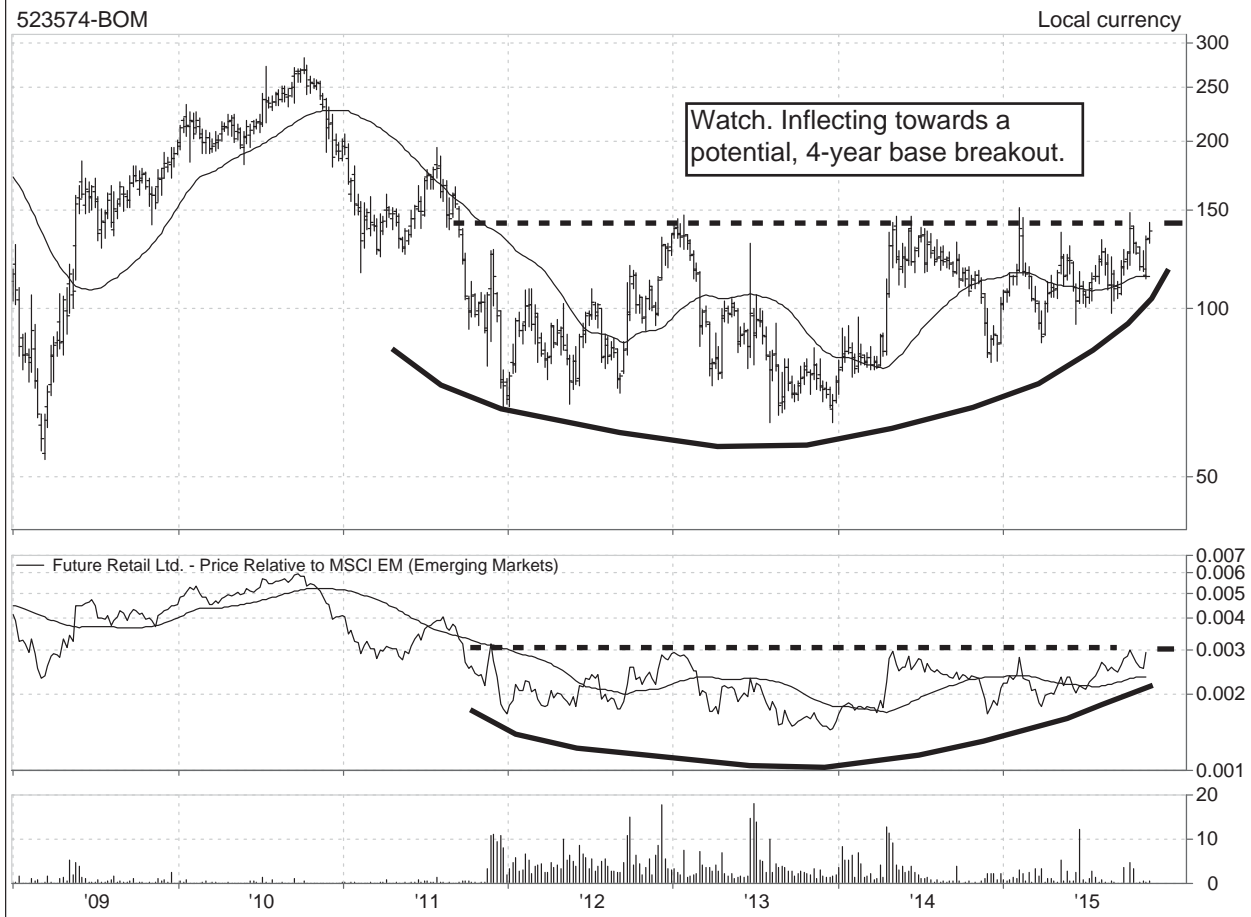
**New Oriental Education & Technology Group, Inc. Sponsored ADR**  
EDU-USA



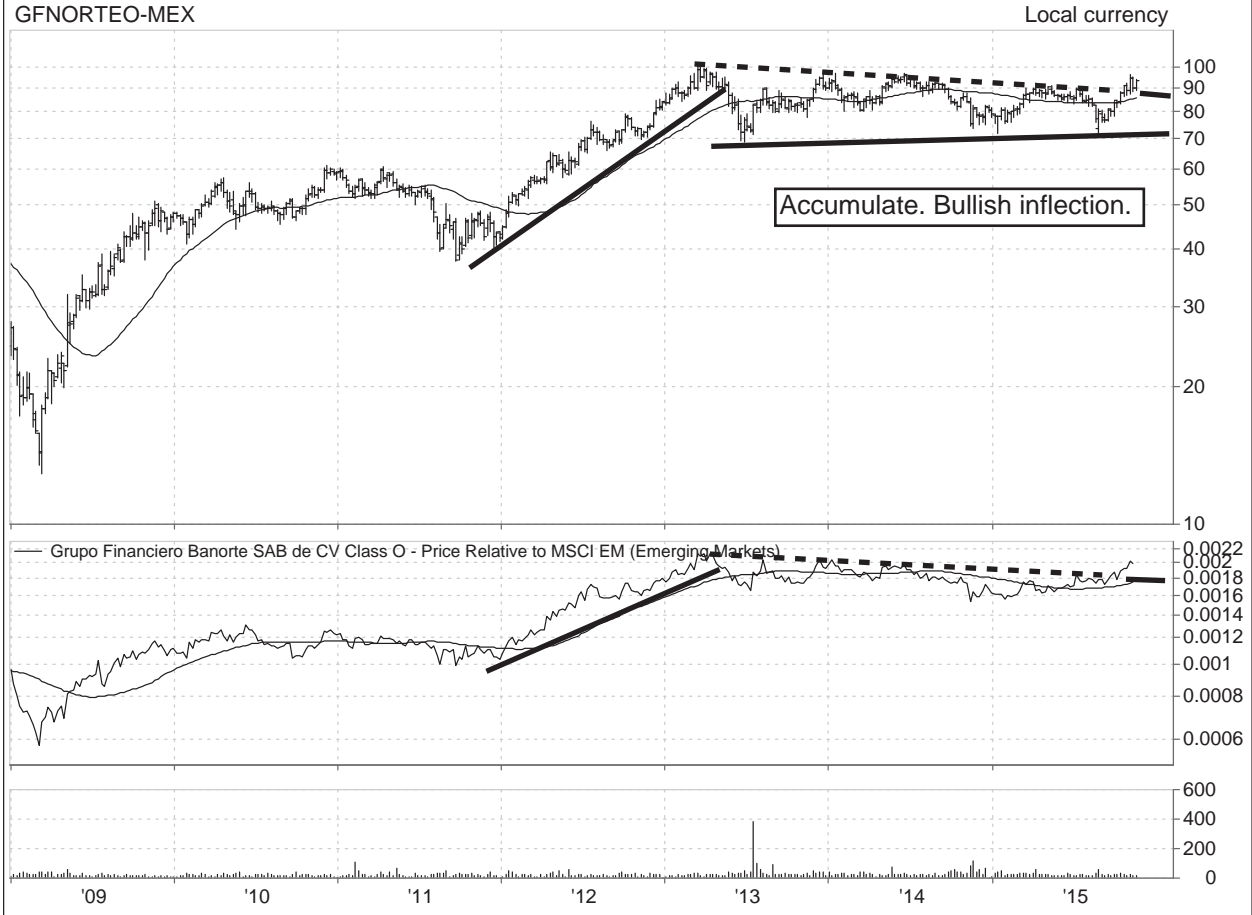
**Truworths International Limited**  
TRU-JSE



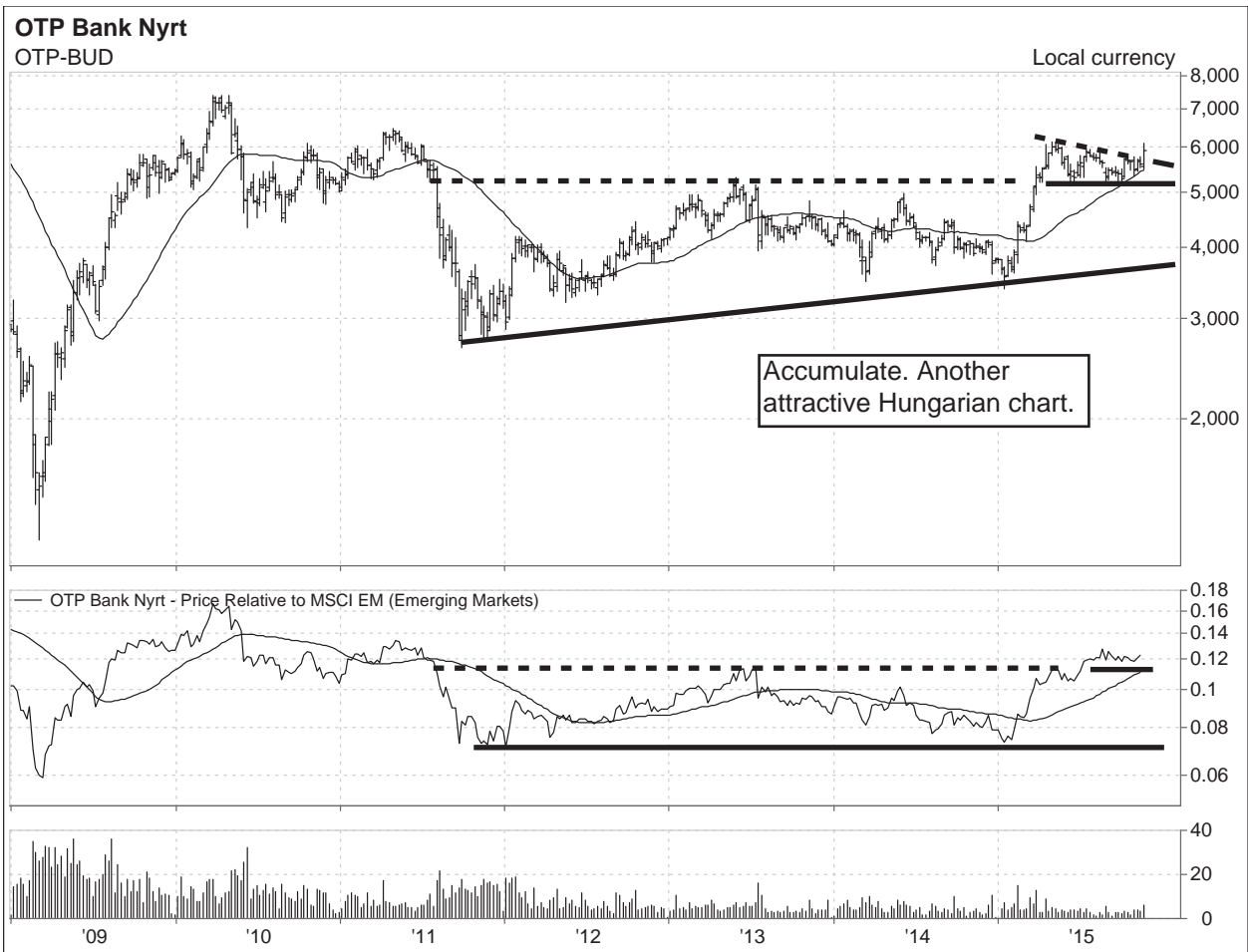
**Future Retail Ltd.**  
523574-BOM



**Grupo Financiero Banorte SAB de CV Class O**  
GFNORTEO-MEX



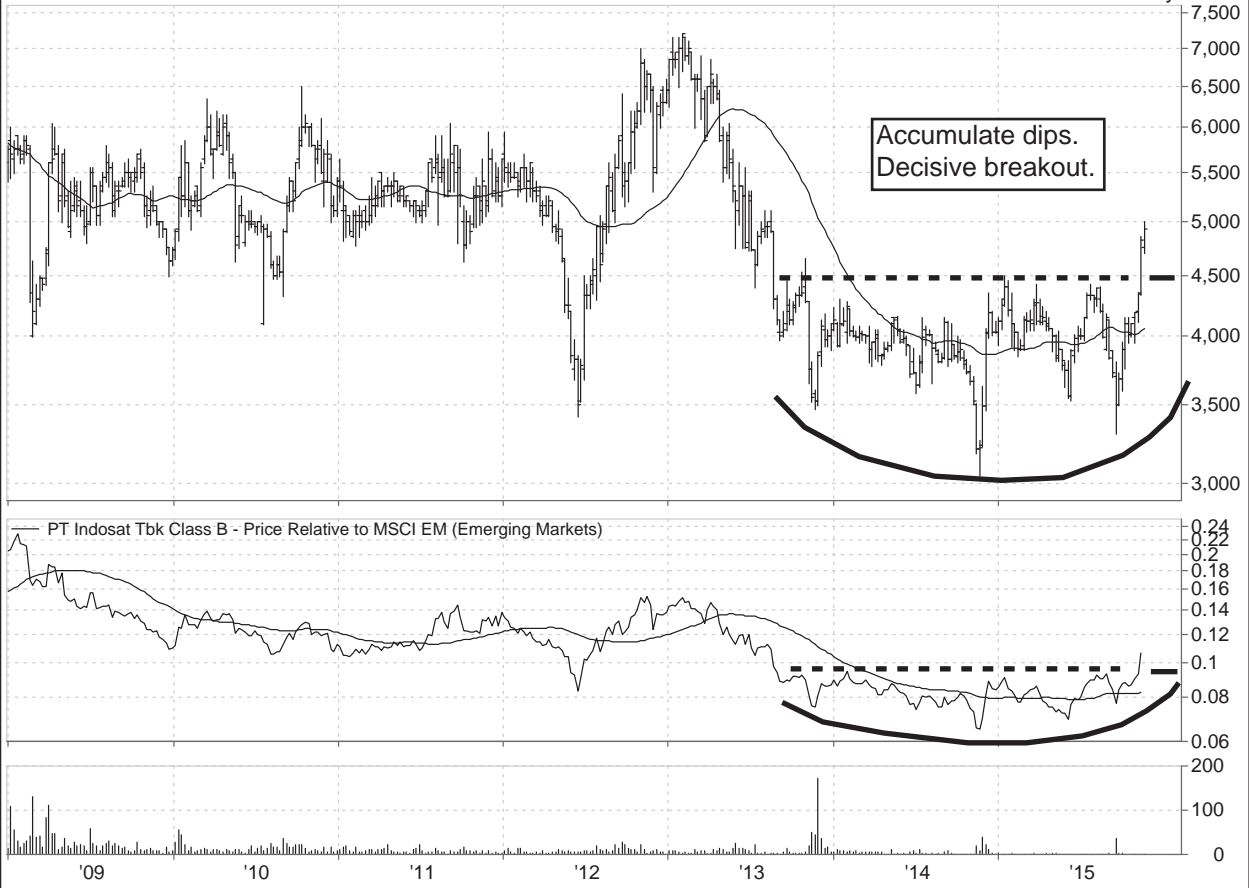
**OTP Bank Nyrt**  
OTP-BUD



**Magyar Telekom Telecommunications Plc**  
MTEL-BUD



**PT Indosat Tbk Class B**  
ISAT-JKT



## EM Leaders: EM Stocks Trading w/in 5% of a 52-week Relative Strength High

(Market cap > \$500mil)

Company Name	Symbol	Price	Mkt Value (\$USD)	Dividend Yield	EV/EBIT	Domicile Country
<b>1100 Non-Energy Minerals</b>						
1105 Steel						
Feng Hsin Steel Co. Ltd.	2015-TW	38.0	672.0	6.6	9.1	TAIWAN
1135 Construction Materials						
Holcim Philippines, Inc.	HLCM-PH	14.5	1,984.8	5.7	12.3	PHILIPPINES
Tipco Asphalt Public Co. Ltd.	TASCO-TH	42.0	1,758.3	0.0	16.3	THAILAND
Cimsa Cimento Sanayi ve Ticaret A.S.	CIMSA-TR	16.5	777.4	7.8	9.2	TURKEY
<b>1200 Producer Manufacturing</b>						
1205 Metal Fabrication						
Duzon Bizon Co., Ltd.	012510-KR	22,900.0	582.2	0.9	29.3	SOUTH KOREA
Shin Zu Shing Co., Ltd.	3376-TW	105.5	569.4	2.1	7.1	TAIWAN
1210 Industrial Machinery						
Hyundai Mobis Co., Ltd.	012330-KR	252,000.0	20,801.6	1.2	6.5	SOUTH KOREA
Hota Industrial Manufacturing Co., Ltd.	1536-TW	127.0	931.2	1.6	30.0	TAIWAN
Toptec Corp.	108230-KR	34,950.0	518.0	0.3	31.4	SOUTH KOREA
1220 Trucks/Construction/Farm Machinery						
Research and Production Corporation Unitec	UWGN-RU	741.5	1,198.8	0.0	376.7	RUSSIA
1225 Auto Parts: OEM						
Hanon Systems	018880-KR	47,100.0	4,398.8	2.0	15.7	SOUTH KOREA
Nemak SAB de CV	NEMAKA-MX	23.1	4,287.5	0.0	13.3	MEXICO
S & T Motiv Co., Ltd.	064960-KR	73,500.0	867.5	1.1	8.8	SOUTH KOREA
Mahle-Metal Leve S.A.	LEVE3-BR	25.7	857.6	0.0	13.4	BRAZIL
SuperAlloy Industrial Co., Ltd.	1563-TW	130.5	790.4	1.5	22.8	TAIWAN
Tung Thih Electronic Co., Ltd.	3552-TW	296.0	763.9	1.1	28.8	TAIWAN
Tong Yang Industry Co., Ltd.	1319-TW	38.8	697.9	1.9	23.1	TAIWAN
PT Selamat Sempurna Tbk	SMSM-ID	5,175.0	520.6	2.7	13.5	INDONESIA
1230 Building Products						
Elementia S.A.B. de C.V.	ELEMENT-MX	19.6	1,015.8	0.0	10.3	MEXICO
Grupo Lamosa SAB de CV	LAMOSA-MX	35.6	805.1	0.8	10.4	MEXICO
Dynasty Ceramic Public Co. Ltd.	DCC-TH	3.9	696.3	3.6	14.5	THAILAND
PT Surya Toto Indonesia Tbk	TOTO-ID	7,150.0	534.7	1.7	20.4	INDONESIA
1235 Electrical Products						
Voltronic Power Technology Corp.	6409-TW	485.0	1,113.1	2.1	20.8	TAIWAN
Motech Industries, Inc.	6244-TW	43.6	647.9	0.0	#N/A	TAIWAN
1250 Miscellaneous Manufacturing						
Grupo Carso SAB de CV Class A1	GCARSOA1-M	75.7	10,251.1	1.1	18.0	MEXICO
Kossan Rubber Industries Bhd.	7153-MY	8.9	1,294.7	0.9	25.0	MALAYSIA
Tupy S.A.	TUPY3-BR	19.8	778.2	0.0	11.9	BRAZIL
Grupo Industrial Saltillo SA de CV Class A	GISSAA-MX	32.0	684.8	3.1	10.6	MEXICO
1255 Industrial Conglomerates						
Rengro Limited	REM-ZA	271.6	8,950.7	1.6	88.2	SOUTH AFRICA
GS Holdings Corp.	078930-KR	51,000.0	3,911.6	2.4	13.5	SOUTH KOREA
Reunert Limited	RLO-ZA	67.0	855.6	5.7	8.9	SOUTH AFRICA
<b>1300 Electronic Technology</b>						
1305 Semiconductors						
Taiwan Semiconductor Manufacturing Co., Ltd.	2330-TW	140.5	108,305.1	3.3	9.8	TAIWAN
Powertech Technology Inc.	6239-TW	71.5	1,688.9	4.2	12.6	TAIWAN
Silicon Motion Technology Corporation Spon	SIMO-US	33.5	1,133.2	2.2	12.3	TAIWAN
LandMark Optoelectronics Corp.	3081-TW	436.5	958.0	1.4	#N/A	TAIWAN
Inari Amertron Berhad	0166-MY	4.1	664.7	2.3	21.7	MALAYSIA
1310 Electronic Components						
Zhen Ding Technology Holding Limited	4958-TW	97.7	2,372.5	3.8	8.2	TAIWAN
General Interface Solution (GIS) Holding Ltd	6456-TW	149.0	1,302.2	0.0	#N/A	TAIWAN
Giga Solar Materials Corp.	3691-TW	621.0	1,156.6	2.4	16.5	TAIWAN
KCE Electronics Public Co., Ltd.	KCE-TH	65.0	1,014.4	1.9	19.7	THAILAND
Micro-Star International Co., Ltd.	2377-TW	40.8	1,004.5	7.7	6.9	TAIWAN

## EM Leaders: EM Stocks Trading w/in 5% of a 52-week Relative Strength High

(Market cap > \$500mil)

Company Name	Symbol	Price	Mkt Value (\$USD)	Dividend Yield	EV/EBIT	Domicile Country
E Ink Holdings Inc.	8069-TW	16.2	559.8	0.0	#N/A	TAIWAN
<b>1320 Telecommunications Equipment</b>						
Wistron Neweb Corporation	6285-TW	88.1	887.4	3.0	12.1	TAIWAN
<b>1330 Aerospace &amp; Defense</b>						
Embraer S.A.	EMBR3-BR	29.1	5,630.9	0.9	19.7	BRAZIL
Aerospace Industrial Development Corporati	2634-TW	41.4	1,118.7	2.3	29.2	TAIWAN
<b>1400 Consumer Durables</b>						
<b>1405 Motor Vehicles</b>						
KIA Motors Corporation	000270-KR	56,400.0	19,261.0	1.8	8.6	SOUTH KOREA
Ford Otomotiv Sanayi A.S.	FROTO-TR	35.0	4,265.5	1.6	17.1	TURKEY
Tofas Turk Otomobil Fabrikasi A.S.	TOASO-TR	20.3	3,496.7	4.8	18.0	TURKEY
TVS Motor Co. Ltd.	532343-IN	294.4	2,051.1	0.7	61.3	INDIA
<b>1415 Homebuilding</b>						
MRV Engenharia e Participacoes S.A.	MRVE3-BR	8.9	1,023.2	4.5	#N/A	BRAZIL
Farglory Land Development Co., Ltd.	5522-TW	36.8	927.1	10.4	7.7	TAIWAN
<b>1425 Electronics/Appliances</b>						
Arcelik A.S.	ARCLK-TR	16.7	3,912.5	3.1	17.1	TURKEY
<b>1445 Other Consumer Specialties</b>						
Rajesh Exports Limited	531500-IN	682.4	3,005.6	0.1	8.3	INDIA
<b>2100 Energy Minerals</b>						
<b>2105 Oil &amp; Gas Production</b>						
TATNEFT PJSC	TATN-RU	349.1	11,464.6	3.1	6.0	RUSSIA
SK Innovation Co., Ltd	096770-KR	125,000.0	9,504.9	0.0	13.7	SOUTH KOREA
<b>2110 Integrated Oil</b>						
Public Joint-Stock Company Gazprom	GAZP-RU	147.5	53,653.3	4.9	4.3	RUSSIA
Rosneft	ROSN-RU	271.5	45,312.5	3.0	9.6	RUSSIA
Novatek OAO	NVTK-RU	620.2	29,453.9	1.9	16.7	RUSSIA
Surgutneftegas OJSC	SNGS-RU	35.3	19,557.3	1.8	4.2	RUSSIA
Essar Oil Limited Class A	500134-IN	212.2	4,610.7	0.0	13.3	INDIA
<b>2120 Oil Refining/Marketing</b>						
Koc Holding A.S.	KCHOL-TR	12.9	11,366.0	1.5	17.1	TURKEY
Ultrapar Participacoes S.A.	UGPA3-BR	69.0	10,129.0	2.2	14.9	BRAZIL
Bharat Petroleum Corporation Limited	500547-IN	906.9	9,623.1	2.5	#N/A	INDIA
S-Oil Corporation	010950-KR	74,500.0	6,751.6	1.6	15.3	SOUTH KOREA
Petronas Dagangan Bhd.	5681-MY	24.0	5,276.1	1.7	22.5	MALAYSIA
Thai Oil Public Co. Ltd.	TOP-TH	62.5	3,499.2	2.4	28.4	THAILAND
IRPC Public Co., Ltd.	IRPC-TH	4.3	2,452.1	1.9	210.5	THAILAND
Bangchak Petroleum Public Co. Ltd.	BCP-TH	35.8	1,367.4	3.9	23.3	THAILAND
MOTOR OIL (HELLAS) CORINTH REFINER	MOH-GR	11.4	1,344.6	1.3	10.7	GREECE
<b>2200 Process Industries</b>						
<b>2205 Chemicals: Major Diversified</b>						
Hanwha Chemical Corporation	009830-KR	24,550.0	3,260.2	0.6	30.1	SOUTH KOREA
Eternal Materials Co., Ltd.	1717-TW	30.9	961.4	5.8	13.3	TAIWAN
Kazan Public Joint Stock Company "Organic	KZOS-RU	29.0	850.5	3.3	#N/A	RUSSIA
<b>2210 Chemicals: Specialty</b>						
LG Chem Ltd.	051910-KR	326,000.0	17,694.9	1.3	15.8	SOUTH KOREA
Formosa Plastics Corporation	1301-TW	75.1	14,167.4	2.3	44.3	TAIWAN
Petronas Chemicals Group Bhd	5183-MY	6.6	11,969.9	2.4	14.4	MALAYSIA
LG Corp	003550-KR	72,700.0	10,392.4	1.4	27.2	SOUTH KOREA
Alpek, S.A.B. de C.V. Class A	ALPEKA-MX	26.4	3,322.0	2.9	11.8	MEXICO
Braskem SA Pfd A	BRKM5-BR	26.3	2,296.8	2.4	8.8	BRAZIL
Petkim Petrokimya Holding Anonim Sirketi	PETKM-TR	4.5	1,559.1	1.1	12.4	TURKEY
Soda Sanayii A.S.	SODA-TR	4.8	1,114.2	1.9	13.2	TURKEY
China Hanking Holdings Ltd.	3788-HK	4.2	994.0	0.0	285.0	CHINA
LCY Chemical Corp.	1704-TW	27.7	716.4	0.0	16.1	TAIWAN
<b>2220 Textiles</b>						

## EM Leaders: EM Stocks Trading w/in 5% of a 52-week Relative Strength High

(Market cap > \$500mil)

Company Name	Symbol	Price	Mkt Value (\$USD)	Dividend Yield	EV/EBIT	Domicile Country
Aksa Akrilik Kimya Sanayii A.S.	AKSA-TR	11.5	732.4	5.8	8.7	TURKEY
<b>2225 Agricultural Commodities/Milling</b>						
Kuala Lumpur Kepong Bhd.	2445-MY	22.6	5,513.8	2.0	22.3	MALAYSIA
PPB Group Bhd.	4065-MY	15.7	4,157.8	1.6	77.2	MALAYSIA
Sao Martinho S.A.	SMTO3-BR	45.9	1,367.4	1.3	23.7	BRAZIL
QL Resources Bhd.	7084-MY	4.2	1,182.4	1.0	21.0	MALAYSIA
KRBL Limited	530813-IN	230.9	837.0	0.7	13.8	INDIA
Boustead Plantations Bhd	5254-MY	1.5	535.6	6.1	42.2	MALAYSIA
Lien Hwa Industrial Corporation	1229-TW	19.3	522.9	7.0	69.8	TAIWAN
<b>2230 Pulp &amp; Paper</b>						
Mondi Limited	MND-ZA	321.0	2,629.4	1.8	15.4	SOUTH AFRICA
Sappi Limited	SAP-ZA	61.2	2,341.3	0.0	13.4	SOUTH AFRICA
<b>2240 Industrial Specialties</b>						
Türkiye Sise ve Cam Fabrikalari A.S.	SISE-TR	3.2	2,114.1	1.5	19.1	TURKEY
Eastern Polymer Group Public Company Ltd	EPG-TH	11.5	816.7	0.0	33.5	THAILAND
<b>2300 Health Technology</b>						
<b>2310 Pharmaceuticals: Other</b>						
Aurobindo Pharma Ltd	524804-IN	817.4	7,184.3	0.2	22.4	INDIA
Chemical Works of Gedeon Richter Plc	RICHT-HU	5,125.0	3,267.4	0.6	13.0	HUNGARY
Wuxi PharmaTech (Cayman) Inc. Sponsorec	WX-US	45.5	3,197.9	0.0	36.4	CHINA
Komipharm International Co., Ltd	041960-KR	54,700.0	2,003.8	0.0	#N/A	SOUTH KOREA
Scinopharm Taiwan, Ltd.	1789-TW	57.0	1,263.8	0.3	77.0	TAIWAN
Strides Arcolab Limited	532531-IN	1,374.0	1,209.8	0.2	84.4	INDIA
Jubilant Life Sciences Limited	530019-IN	403.1	965.2	0.7	13.1	INDIA
Hanall Biopharma Co., Ltd.	009420-KR	14,400.0	637.5	0.0	1,803.5	SOUTH KOREA
Pharmally International Holding Co Ltd	6452-TW	383.0	586.0	1.6	#N/A	TAIWAN
<b>2320 Biotechnology</b>						
Celltrion, Inc.	068270-KR	90,700.0	8,524.6	0.0	47.5	SOUTH KOREA
OBI Pharma, Inc.	4174-TW	530.0	2,727.0	0.0	#N/A	TAIWAN
Syngene International Ltd	539268-IN	365.0	1,085.7	0.0	36.4	INDIA
Taimed Biologics Inc.	4147-TW	148.5	992.5	0.0	#N/A	TAIWAN
<b>2325 Medical Specialties</b>						
Hartalega Holdings Bhd.	5168-MY	6.0	2,212.2	1.2	31.0	MALAYSIA
Top Glove Corporation Bhd.	7113-MY	9.9	1,417.5	2.0	17.0	MALAYSIA
St. Shine Optical Co. Ltd.	1565-TW	607.0	959.1	3.8	19.4	TAIWAN
Osstem Implant Co., Ltd.	048260-KR	65,600.0	799.4	0.0	33.4	SOUTH KOREA
InBody Co., Ltd.	041830-KR	50,700.0	577.2	0.1	42.2	SOUTH KOREA
<b>2400 Consumer Non-Durables</b>						
<b>2405 Food: Major Diversified</b>						
Grupo Herdez SAB de CV	HERDEZ-MX	45.4	1,211.3	2.0	12.3	MEXICO
<b>2410 Food: Specialty/Candy</b>						
Grupo Bimbo SAB de CV Class A	BIMBOA-MX	48.3	13,242.4	0.0	16.4	MEXICO
Universal Robina Corp.	URC-PH	199.7	9,242.5	1.5	27.0	PHILIPPINES
Gruma SAB de CV Class B	GRUMAB-MX	259.2	6,625.9	0.6	16.7	MEXICO
Grupo Lala, S.A.B. de C.V Class I Series B	LALAB-MX	42.3	6,178.5	1.2	17.5	MEXICO
Ulker Biskuvü Sanayi A.S.	ULKER-TR	19.8	2,338.1	1.4	27.3	TURKEY
<b>2415 Food: Meat/Fish/Dairy</b>						
Oceana Group Limited	OCE-ZA	115.0	1,095.3	3.2	16.6	SOUTH AFRICA
<b>2420 Beverages: Non-Alcoholic</b>						
Arca Continental SAB de CV	AC-MX	103.1	9,817.7	1.7	17.9	MEXICO
Coca-Cola FEMSA SAB de CV Class L	KOFL-MX	128.0	3,768.5	2.4	14.7	MEXICO
Fraser & Neave Holdings Bhd.	3689-MY	18.5	1,542.0	3.1	20.0	MALAYSIA
Organizacion Cultiba SAB de CV Class B	CULTIBAB-MX	23.0	989.2	1.2	23.8	MEXICO
<b>2425 Beverages: Alcoholic</b>						
Compania Cervecerias Unidas S.A.	CCU-CL	8,411.5	4,300.6	1.9	16.6	CHILE
Distell Group Limited	DST-ZA	179.0	2,807.1	1.9	20.2	SOUTH AFRICA



## EM Leaders: EM Stocks Trading w/in 5% of a 52-week Relative Strength High

(Market cap > \$500mil)

Company Name	Symbol	Price	Mkt Value (\$USD)	Dividend Yield	EV/EBIT	Domicile Country
Guinness Anchor Bhd.	3255-MY	14.3	979.7	5.0	14.6	MALAYSIA
Turk Tuborg Bira ve Malt Sanayii A.S.	TBORG-TR	7.4	830.2	0.0	13.2	TURKEY
Capevin Holdings Ltd.	CVH-ZA	10.3	633.7	2.2	#N/A	SOUTH AFRICA
<b>2430 Tobacco</b>						
Souza Cruz S.A.	CRUZ3-BR	27.5	12,132.8	0.0	22.3	BRAZIL
<b>2435 Household/Personal Care</b>						
Amorepacific Corp.	090430-KR	394,500.0	19,274.2	0.2	35.2	SOUTH KOREA
LG Household & Health Care Ltd	051900-KR	986,000.0	12,737.0	0.4	22.7	SOUTH KOREA
Kimberly-Clark de Mexico SAB de CV Class	KIMBERA-MX	41.2	3,932.8	3.6	20.5	MEXICO
Hypermarcas S.A.	HYPE3-BR	22.2	3,608.4	0.0	18.7	BRAZIL
Ginko International Co., Ltd.	8406-TW	416.0	1,181.3	1.6	22.1	TAIWAN
CEFC International Ltd.	Y35-SG	0.4	1,159.8	0.0	85.6	CHINA
Chlitina Holding Ltd.	4137-TW	365.0	872.5	1.9	24.1	TAIWAN
Karex Bhd.	5247-MY	4.0	608.7	0.6	40.4	MALAYSIA
<b>2440 Apparel/Footwear</b>						
C.banner International Holdings Ltd.	1028-HK	3.1	856.9	0.0	18.6	CHINA
Alpargatas SA Pfd	ALPA4-BR	9.8	587.3	0.0	12.8	BRAZIL
<b>3100 Industrial Services</b>						
<b>3110 Oilfield Services/Equipment</b>						
Qatar Gas Transport Co.	QGTS-QA	25.0	3,828.8	4.8	20.2	QATAR
Dialog Group Bhd.	7277-MY	1.6	1,914.2	1.3	23.6	MALAYSIA
<b>3115 Engineering &amp; Construction</b>						
Promotora y Operadora de Infraestructura S	PINFRA-MX	206.9	4,616.4	0.0	18.1	MEXICO
IJM Corp. Bhd.	3336-MY	3.3	2,660.9	2.3	17.1	MALAYSIA
PT PP (Persero) Tbk	PTPP-ID	3,845.0	1,326.5	0.6	15.7	INDONESIA
CH. Karnchang Public Co. Ltd.	CK-TH	28.5	1,305.7	2.2	75.9	THAILAND
Unique Engineering & Construction Pcl	UNIQ-TH	21.7	651.6	0.9	28.2	THAILAND
KEC International Limited	532714-IN	158.2	574.7	0.6	15.2	INDIA
Huaku Development Co., Ltd.	2548-TW	63.5	535.1	7.9	7.4	TAIWAN
<b>3120 Environmental Services</b>						
Cleanaway Co., Ltd.	8422-TW	179.0	585.9	4.5	12.8	TAIWAN
<b>3130 Oil &amp; Gas Pipelines</b>						
Petronas Gas Bhd.	6033-MY	22.7	10,229.4	1.9	23.9	MALAYSIA
Petronet Lng Limited	532522-IN	206.1	2,386.3	0.9	26.0	INDIA
Gujarat State Petronet Limited	532702-IN	125.4	1,052.1	1.0	10.6	INDIA
<b>3200 Commercial Services</b>						
<b>3205 Miscellaneous Commercial Services</b>						
Bidvest Group Limited	BVT-ZA	345.5	8,123.3	2.6	13.9	SOUTH AFRICA
WNS (Holdings) Limited Sponsored ADR	WNS-US	31.5	1,681.0	0.0	25.3	INDIA
TravelSky Technology Ltd. Class H	696-HK	13.2	1,528.0	1.3	16.7	CHINA
Taiwan Secom Co., Ltd.	9917-TW	97.5	1,359.1	4.0	18.0	TAIWAN
<b>3210 Advertising/Marketing Services</b>						
INNOCEAN Worldwide, Inc.	214320-KR	70,000.0	1,230.1	0.0	12.4	SOUTH KOREA
Plan B Media Public Company Ltd	PLANB-TH	7.3	694.1	0.0	49.3	THAILAND
<b>3250 Distribution Services</b>						
<b>3255 Wholesale Distributors</b>						
Hap Seng Consolidated Bhd.	3034-MY	6.6	3,220.9	4.0	33.1	MALAYSIA
Eurocash S.A.	EUR-PL	54.4	1,887.3	1.5	30.2	POLAND
Aurora Corporation	2373-TW	51.2	528.8	5.8	20.8	TAIWAN
<b>3300 Technology Services</b>						
<b>3308 Information Technology Services</b>						
Assec Poland S.A.	ACP-PL	58.5	1,221.7	4.9	10.9	POLAND
Vakrangee Ltd	511431-IN	150.5	1,162.0	0.2	13.2	INDIA
My E.G. Services Bhd.	0138-MY	3.5	928.1	0.6	58.0	MALAYSIA
<b>3310 Packaged Software</b>						
Totvs S.A.	TOTS3-BR	35.3	1,566.8	2.6	17.5	BRAZIL

## EM Leaders: EM Stocks Trading w/in 5% of a 52-week Relative Strength High

(Market cap > \$500mil)

Company Name	Symbol	Price	Mkt Value (\$USD)	Dividend Yield	EV/EBIT	Domicile Country
<b>3320 Internet Software/Services</b>						
NetEase, Inc. Sponsored ADR	NTES-US	159.3	20,297.9	1.1	19.5	CHINA
Mail.ru Group Ltd. Sponsored GDR RegS	MAIL-GB	22.7	4,641.0	0.0	2.3	RUSSIA
Shanda Games Ltd. Sponsored ADR Class A	GAME-US	7.0	1,546.7	0.0	7.0	CHINA
PT Indoritel Makmur International Tbk	DNET-ID	1,130.0	1,171.8	0.2	#N/A	INDONESIA
Philweb Corporation	WEB-PH	20.0	608.2	3.0	27.6	PHILIPPINES
Xurpas Inc	X-PH	16.4	598.5	0.2	99.2	PHILIPPINES
<b>3350 Health Services</b>						
<b>3355 Managed Health Care</b>						
Odontoprev S.A.	ODPV3-BR	10.3	1,455.0	0.0	17.5	BRAZIL
<b>3360 Hospital/Nursing Management</b>						
IHH Healthcare Bhd.	5225-MY	6.7	12,453.8	0.5	49.6	MALAYSIA
Bangkok Dusit Medical Services Public Co. Ltd.	BDMS-TH	19.9	8,520.0	1.2	38.9	THAILAND
Mediclinic International Limited	MDC-ZA	119.9	8,295.1	0.9	23.6	SOUTH AFRICA
Al Noor Hospitals Group PLC	ANH-GB	11.6	2,069.1	1.1	25.2	U.A.E.
Chularat Hospital PCL	CHG-TH	2.5	770.0	1.3	451.4	THAILAND
Vibhavadi Medical Center Public Co. Ltd.	VIBHA-TH	1.6	560.4	1.9	24.1	THAILAND
<b>3365 Medical/Nursing Services</b>						
KPJ Healthcare Bhd.	5878-MY	4.2	1,015.5	1.9	26.7	MALAYSIA
<b>3400 Consumer Services</b>						
<b>3410 Broadcasting</b>						
Youku Tudou, Inc. Sponsored ADR Class A	YOKU-US	26.7	4,255.3	0.0	#N/A	CHINA
GMA Network, Inc.	GMA7-PH	7.4	529.8	3.4	9.6	PHILIPPINES
<b>3415 Cable/Satellite TV</b>						
Naspers Limited Class N	NPN-ZA	2,149.2	64,145.2	0.2	407.8	SOUTH AFRICA
Cyfrowy Polsat SA	CPS-PL	25.3	4,055.6	1.0	14.4	POLAND
<b>3430 Movies/Entertainment</b>						
Bona Film Group Ltd. Sponsored ADR	BONA-US	12.8	794.2	0.0	98.1	CHINA
<b>3435 Restaurants</b>						
Alsea, S.A.B. de C.V.	ALSEA-MX	58.0	2,900.9	0.9	25.4	MEXICO
Kulim (Malaysia) Bhd.	2003-MY	3.9	1,202.6	0.0	49.7	MALAYSIA
Famous Brands Limited	FBR-ZA	137.7	958.3	2.9	19.2	SOUTH AFRICA
Gourmet Master Co. Ltd.	2723-TW	222.5	948.7	0.5	18.9	TAIWAN
<b>3440 Hotels/Resorts/Cruiselines</b>						
Minor International Public Co., Ltd.	MINT-TH	34.0	4,096.6	0.7	58.6	THAILAND
Central Plaza Hotel Public Co. Ltd.	CENDEL-TH	45.8	1,725.0	0.9	32.1	THAILAND
Homeinns Hotel Group Sponsored ADR	HMIN-US	30.6	1,430.3	0.0	20.0	CHINA
<b>3450 Other Consumer Services</b>						
New Oriental Education & Technology Group	EDU-US	29.9	4,529.3	0.0	18.7	CHINA
TAL Education Group Un-sponsored ADR Class A	XRS-US	41.5	1,814.7	0.0	14.7	CHINA
Curro Holdings Limited	COH-ZA	47.0	1,179.3	0.0	93.9	SOUTH AFRICA
Tesco Kipa Kitle Pazarlama Ticaret ve Gida A.S.	KIPA-TR	2.6	1,162.1	0.0	#N/A	TURKEY
SOMOS Educacao S.A.	SEDU3-BR	13.5	924.2	0.3	15.3	BRAZIL
Blue Label Telecoms Limited	BLU-ZA	11.7	564.4	2.6	8.2	SOUTH AFRICA
<b>3500 Retail Trade</b>						
<b>3510 Drugstore Chains</b>						
Raia Drogasil S.A.	RADL3-BR	43.4	3,758.2	0.0	27.6	BRAZIL
Clicks Group Limited	CLS-ZA	98.9	1,713.3	2.4	144.2	SOUTH AFRICA
<b>3515 Department Stores</b>						
S.A.C.I. Falabella	FALABELLA-C	4,471.5	15,300.9	1.6	16.5	CHILE
Woolworths Holdings Limited	WHL-ZA	103.0	7,585.7	2.4	29.5	SOUTH AFRICA
Grupo Comercial Chedraui SAB de CV Class A	CHDRAUIB-M;	46.9	2,708.9	0.5	13.9	MEXICO
Ripley Corp S.A.	RIPLEY-CL	276.0	796.0	2.4	18.8	CHILE
<b>3520 Discount Stores</b>						
Wal-Mart de Mexico SAB de CV	WALMEX-MX	45.8	48,419.1	4.0	22.5	MEXICO
BIM Birlesik Magazalar A.S.	BIMAS-TR	56.1	6,009.5	1.6	27.5	TURKEY

## EM Leaders: EM Stocks Trading w/in 5% of a 52-week Relative Strength High

(Market cap > \$500mil)

Company Name	Symbol	Price	Mkt Value (\$USD)	Dividend Yield	EV/EBIT	Domicile Country
Lojas Americanas SA Pfd	LAME4-BR	18.6	3,659.9	0.5	16.4	BRAZIL
<b>3525 Apparel/Footwear Retail</b>						
Truworths International Limited	TRU-ZA	98.1	2,967.3	4.1	18.8	SOUTH AFRICA
Future Retail Ltd.	523574-IN	137.9	790.2	0.4	23.1	INDIA
<b>3535 Electronics/Appliance Stores</b>						
M.video PJSC	MVID-RU	245.0	678.5	21.2	3.9	RUSSIA
<b>3540 Specialty Stores</b>						
Cencosud S.A.	CENCOSUD-C	1,587.0	6,233.6	1.3	11.6	CHILE
Organizacion Soriana SAB de CV Class B	SORIANAB-M)	39.8	4,278.6	1.0	15.0	MEXICO
Oriental Holdings Bhd.	4006-MY	7.0	989.0	1.7	8.2	MALAYSIA
Super Group Limited	SPG-ZA	35.4	866.4	0.0	9.4	SOUTH AFRICA
<b>3550 Internet Retail</b>						
Interpark Corp.	108790-KR	23,350.0	689.6	0.4	35.6	SOUTH KOREA
<b>4600 Transportation</b>						
<b>4610 Airlines</b>						
InterGlobe Aviation Ltd	539448-IN	1,145.8	5,675.3	0.0	153.8	INDIA
Volaris Aviation Holding Company Class A	VOLARA-MX	29.7	1,467.4	0.0	9.9	MEXICO
Bangkok Airways Public Company Ltd	BA-TH	22.2	1,271.7	0.0	29.7	THAILAND
Grupo Aeromexico SA de CV	AEROMEX-M)	37.2	1,218.1	0.0	10.8	MEXICO
Aeroflot-Russian Airlines PJSC	AFLT-RU	56.5	974.4	0.0	16.7	RUSSIA
<b>4615 Trucking</b>						
Kerry TJ Logistics Co. Ltd.	2608-TW	39.9	569.8	3.9	14.2	TAIWAN
<b>4625 Marine Shipping</b>						
MISC Bhd	3816-MY	9.2	9,332.2	1.5	25.3	MALAYSIA
<b>4630 Other Transportation</b>						
Airports of Thailand Public Co. Ltd.	AOT-TH	318.0	12,420.6	0.0	22.4	THAILAND
Grupo Aeroportuario del Pacifico SAB de CV	GAPB-MX	158.1	4,502.0	2.1	24.9	MEXICO
Grupo Aeroportuario del Sureste SA de CV (ASURB-MX	ASURB-MX	265.1	4,302.4	2.0	20.2	MEXICO
Novorossiysk Commercial Sea Port PJSC	NMTP-RU	3.5	1,004.9	6.9	5.0	RUSSIA
Yinson Holdings Bhd.	7293-MY	2.9	736.7	0.5	36.9	MALAYSIA
<b>4700 Utilities</b>						
<b>4705 Electric Utilities</b>						
Korea Electric Power Corporation	015760-KR	50,600.0	27,819.8	1.0	8.9	SOUTH KOREA
Empresa Nacional de Electricidad S.A.	ENDESA-CL	874.0	9,763.0	2.4	11.2	CHILE
Tractebel Energia S.A.	TBLE3-BR	36.6	6,269.6	0.0	11.4	BRAZIL
E.ON Russia JSC	EONR-RU	3.2	3,032.8	8.9	15.7	RUSSIA
Inter RAO UES PJSC	IRAO-RU	1.2	1,959.1	0.1	6.2	RUSSIA
Equatorial Energia S.A.	EQTL3-BR	37.2	1,948.1	2.1	6.9	BRAZIL
SJVN Limited	533206-IN	28.7	1,787.1	3.7	6.5	INDIA
EDP - Energias Do Brasil S.A.	ENBR3-BR	12.7	1,579.5	3.8	6.8	BRAZIL
E-CL S.A.	ECL-CL	990.0	1,464.7	2.0	14.4	CHILE
Torrent Power Limited	532779-IN	187.9	1,366.9	0.8	10.0	INDIA
Cia de Transmissao de Energia Eletrica Pau	TRPL4-BR	45.8	1,195.8	0.0	16.8	BRAZIL
Ampla Energia e Servicos S.A.	CBEE3-BR	0.0	1,193.6	1.6	13.0	BRAZIL
Komi Energy Retail Co. OJSC	KESK-RU	0.2	1,053.7	0.0	80.5	RUSSIA
Global Power Synergy PCL	GPSC-TH	24.5	973.9	0.0	24.4	THAILAND
Centrais Eletricas Brasileiras SA-Eletronbras	ELET6-BR	10.9	747.3	0.0	#N/A	BRAZIL
Irkutsk public Joint Stock Company of Energ	IRGZ-RU	8.7	644.7	6.0	4.4	RUSSIA
<b>4735 Gas Distributors</b>						
Aygaz A.S.	AYGAZ-TR	11.0	1,124.9	3.1	79.1	TURKEY
<b>4755 Water Utilities</b>						
Companhia de Saneamento Basico do Estac	SBSP3-BR	19.3	3,376.6	0.0	14.4	BRAZIL
Inversiones Aguas Metropolitanas S.A.	IAM-CL	995.0	1,372.6	6.0	10.0	CHILE
Eastern Water Resources Development & M	EASTW-TH	11.9	545.3	3.9	15.4	THAILAND
<b>4800 Finance</b>						
<b>4810 Regional Banks</b>						

## EM Leaders: EM Stocks Trading w/in 5% of a 52-week Relative Strength High

(Market cap > \$500mil)

Company Name	Symbol	Price	Mkt Value (\$USD)	Dividend Yield	EV/EBIT	Domicile Country
Sberbank Russia OJSC	SBER-RU	104.9	34,502.8	0.4	#N/A	RUSSIA
PT Bank Central Asia Tbk	BBCA-ID	12,950.0	23,360.6	1.2	#N/A	INDONESIA
Public Bank Bhd	1295-MY	18.0	15,914.0	3.1	#N/A	MALAYSIA
Grupo Financiero Banorte SAB de CV Class B	GFNORTEO-M	93.4	15,483.8	0.0	#N/A	MEXICO
VTB Bank PJSC	VTBR-RU	0.1	15,157.9	1.5	#N/A	RUSSIA
Banco de Chile	CHILE-CL	72.3	9,701.7	4.6	#N/A	CHILE
Grupo Financiero Santander Mexico SAB de	SANMEXB-MX	33.0	6,370.0	1.6	#N/A	MEXICO
Hong Leong Bank Bhd.	5819-MY	13.7	5,822.5	3.0	#N/A	MALAYSIA
OTP Bank Nyrt	OTP-HU	5,910.0	5,787.5	2.4	#N/A	HUNGARY
E-SUN Financial Holding Co., Ltd.	2884-TW	19.8	4,824.3	2.0	#N/A	TAIWAN
Capitec Bank Holdings Limited	CPI-ZA	607.4	4,804.8	1.6	#N/A	SOUTH AFRICA
Gentera, S.A.B. de C.V.	GENERERA-MX	33.2	3,159.8	2.4	#N/A	MEXICO
Investec Limited	INL-ZA	117.0	2,241.4	3.3	#N/A	SOUTH AFRICA
Grupo Financiero Interacciones SA de CV Cl	GFINTERO-M)	107.2	1,740.4	1.6	#N/A	MEXICO
Thanachart Capital Public Co., Ltd.	TCAP-TH	35.0	1,215.7	5.0	#N/A	THAILAND
Ta Chong Bank Ltd.	2847-TW	13.8	1,169.2	0.0	#N/A	TAIWAN
Credit Bank of Moscow	CBOM-RU	3.8	1,130.3	0.0	#N/A	RUSSIA
Turkiye Sinai Kalkinma Bankasi A.S.	TSKB-TR	1.7	1,007.2	2.5	#N/A	TURKEY
PT Bank Tabungan Negara (Persero) Tbk	BBTN-ID	1,240.0	926.6	1.7	#N/A	INDONESIA
Far Eastern International Bank	2845-TW	10.0	917.4	3.8	#N/A	TAIWAN
Taichung Commercial Bank Co., Ltd.	2812-TW	9.9	914.8	2.4	#N/A	TAIWAN
Union Bank Of Taiwan	2838-TW	9.6	748.2	2.6	#N/A	TAIWAN
Asia United Bank Corp.	AUB-PH	49.2	506.6	0.0	#N/A	PHILIPPINES
<b>4830 Finance/Rental/Leasing</b>						
Srisawad Power 1979 Plc	SAWAD-TH	47.3	1,331.7	0.0	#N/A	THAILAND
Muangthai Leasing Public Company Ltd.	MTLS-TH	21.2	1,230.8	0.6	#N/A	THAILAND
Unifin Financiera SAB de CV SOFOM ENR (UNIFINA-MX	UNIFINA-MX	53.8	1,126.2	0.0	#N/A	MEXICO
Credito Real SAB de CV SOFOM ER	CREAL-MX	38.5	852.3	0.6	#N/A	MEXICO
KrungThai Card Public Co. Ltd.	KTC-TH	105.0	755.6	2.6	#N/A	THAILAND
Group Lease Public Co. Ltd.	GL-TH	19.0	684.8	0.3	#N/A	THAILAND
<b>4840 Investment Banks/Brokers</b>						
BM&FBOVESPA S.A. Bolsa de Valores, Mer	BVMF3-BR	12.3	5,955.1	0.0	10.1	BRAZIL
Brait S.E.	BAT-ZA	155.0	5,673.9	0.5	#N/A	SOUTH AFRICA
Moscow Exchange MICEX-RTS PJSC	MOEX-RU	93.1	3,274.3	4.1	#N/A	RUSSIA
PT Sarana Menara Nusantara Tbk	TOWR-ID	4,205.0	3,253.2	0.0	#N/A	INDONESIA
Cetip S.A. - Mercados Organizados	CTIP3-BR	38.4	2,688.7	0.0	#N/A	BRAZIL
Corporativo GBM SAB de CV Class O	GBMO-MX	14.5	1,298.0	0.0	#N/A	MEXICO
Bursa Malaysia Bhd.	1818-MY	8.3	1,009.3	4.2	#N/A	MALAYSIA
PT Kresna Graha Sekurindo Tbk	KREN-ID	2,410.0	642.6	0.0	#N/A	INDONESIA
<b>4845 Investment Managers</b>						
PSG Group Limited	PSG-ZA	273.5	4,210.2	0.9	#N/A	SOUTH AFRICA
<b>4850 Financial Conglomerates</b>						
Ayala Corp.	AC-PH	755.0	9,924.7	0.7	28.0	PHILIPPINES
Hua Nan Financial Holdings Co., Ltd.	2880-TW	15.6	4,681.3	3.8	#N/A	TAIWAN
Jih Sun Financial Holding Co., Ltd	5820-TW	7.4	759.0	1.8	#N/A	TAIWAN
<b>4855 Property/Casualty Insurance</b>						
Dongbu Insurance Co., Ltd	005830-KR	61,300.0	4,010.3	2.2	#N/A	SOUTH KOREA
KB Insurance Co., Ltd.	002550-KR	28,000.0	1,425.5	1.8	#N/A	SOUTH KOREA
Hanwha General Insurance Co., Ltd	000370-KR	7,420.0	572.8	0.0	#N/A	SOUTH KOREA
<b>4860 Multi-Line Insurance</b>						
Rand Merchant Insurance Holdings Limited	RMI-ZA	43.9	4,430.2	2.7	#N/A	SOUTH AFRICA
China Reinsurance (Group) Corp. Class H	1508-HK	2.7	2,309.5	0.0	#N/A	CHINA
CNinsure, Inc. Sponsored ADR	CISG-US	10.0	563.8	0.0	33.6	CHINA
<b>4865 Life/Health Insurance</b>						
Discovery Ltd.	DSY-ZA	149.2	6,588.8	1.2	#N/A	SOUTH AFRICA
China Life Insurance Co. Ltd. (Taiwan)	2823-TW	26.7	2,688.4	1.4	#N/A	TAIWAN

## EM Leaders: EM Stocks Trading w/in 5% of a 52-week Relative Strength High

(Market cap > \$500mil)

Company Name	Symbol	Price	Mkt Value (\$USD)	Dividend Yield	EV/EBIT	Domicile Country
Anadolu Hayat Emeklilik A.S.	ANHYT-TR	5.5	780.8	2.7	#N/A	TURKEY
AvivaSA Emeklilik ve Hayat A.S	AVISA-TR	16.9	693.5	2.0	#N/A	TURKEY
<b>4885 Real Estate Development</b>						
Central Pattana Public Co. Ltd.	CPN-TH	46.5	5,765.8	1.4	#N/A	THAILAND
Metro Pacific Investments Corporation	MPI-PH	5.3	3,111.9	1.3	39.8	PHILIPPINES
Land & Houses Public Co., Ltd.	LH-TH	9.2	2,948.8	7.2	51.1	THAILAND
Robinsons Land Corp.	RLC-PH	30.4	2,640.3	1.2	#N/A	PHILIPPINES
Grupo Gicsa SA DE CV	GICSAB-MX	16.7	1,507.0	0.0	#N/A	MEXICO
DoubleDragon Properties Corp.	DD-PH	22.9	1,083.3	0.2	#N/A	PHILIPPINES
Globe Trade Centre SA	GTC-PL	7.1	821.6	0.0	#N/A	POLAND
UOA Development Bhd.	5200-MY	2.1	737.7	6.1	7.1	MALAYSIA
Modern Land (China) Co. Ltd.	1107-HK	1.9	520.6	0.0	#N/A	CHINA
<b>4890 Real Estate Investment Trusts</b>						
Resilient Property Income Fund Limited	RES-ZA	122.7	3,306.3	3.2	#N/A	SOUTH AFRICA
Capital Property Fund Limited	CPF-ZA	19.5	2,424.2	4.5	#N/A	SOUTH AFRICA
Prologis Property Mexico, S.A. de C.V	FIBRAPL14-M	27.8	1,040.9	0.0	#N/A	MEXICO
IGB Real Estate Investment Trust	5227-MY	1.3	1,035.8	6.4	#N/A	MALAYSIA
Fortress Income Fund Limited Class A	FFA-ZA	17.5	563.9	7.2	#N/A	SOUTH AFRICA
<b>4900 Communications</b>						
<b>4905 Major Telecommunications</b>						
Emirates Telecommunications Group Company	ETISALAT-AE	16.1	37,768.2	4.7	14.2	U.A.E.
Chunghwa Telecom Co., Ltd	2412-TW	100.0	23,366.6	4.9	15.6	TAIWAN
PT Telekomunikasi Indonesia, Tbk Class B	TLKM-ID	2,815.0	20,818.1	3.1	9.9	INDONESIA
Maxis Bhd.	6012-MY	6.6	11,202.4	3.5	20.1	MALAYSIA
Magyar Telekom Telecommunications Plc	MTEL-HU	409.0	1,462.6	0.0	11.4	HUNGARY
<b>4910 Specialty Telecommunications</b>						
O2 Czech Republic a.s.	TELEC-CZ	250.0	3,080.3	5.2	12.1	CZECH REPUBLIC
Empresa Nacional de Telecomunicaciones	SENTEL-CL	6,595.0	2,144.6	0.5	49.7	CHILE
TIME dotCom Bhd.	5031-MY	6.7	877.0	0.8	23.2	MALAYSIA
Empresa de Telecomunicaciones de Bogota	ETB-CO	600.0	687.0	3.2	11.7	COLOMBIA
<b>4915 Wireless Telecommunications</b>						
Vodacom Group Limited	VOD-ZA	150.0	15,431.4	5.4	11.6	SOUTH AFRICA
Taiwan Mobile Co., Ltd	3045-TW	101.0	10,585.6	5.5	18.4	TAIWAN
PT Indosat Tbk Class B	ISAT-ID	4,925.0	1,939.4	0.7	19.9	INDONESIA

This page intentionally left blank.

---

David P. Nicoski, CMT  
952-922-7502  
dave@vermilioncap.com

Shelley D. Moen, CMT  
952-922-7504  
shelley@vermilioncap.com

Joe W. Jasper, CFA  
952-922-7501  
joe@vermilioncap.com

John M. Betz, CMT  
952-922-7506  
john@vermilioncap.com

---

900 Second Avenue S., Ste. 270 • Minneapolis, MN 55402 • 952-922-7500 • [www.vermilioncap.com](http://www.vermilioncap.com)

**Disclaimer:** The information contained herein is privileged, confidential and protected from disclosure. Any unauthorized disclosure distribution, dissemination or copying of this material or any attachment is strictly prohibited; such information, whether derived from Vermilion Technical Research, LLC or from any oral or written communication by way of opinion, advice, or otherwise with a principal of the company is not warranted in any manner whatsoever, is for the use of our customers only and may be obtained from internal and external research sources considered to be reliable. It is not necessarily complete and its accuracy is not guaranteed by Vermilion Technical Research, LLC, its operating entity or the principals therein. Neither the information nor any opinion expressed constitutes a solicitation for the purchase of any future or security referred to in Vermilion research publications. Principals of Vermilion Technical Research, LLC may or may not hold, or be short of, securities discussed herein, or of any other securities, at any time. The foregoing also expressly applies to any trial subscription.